

Burundi



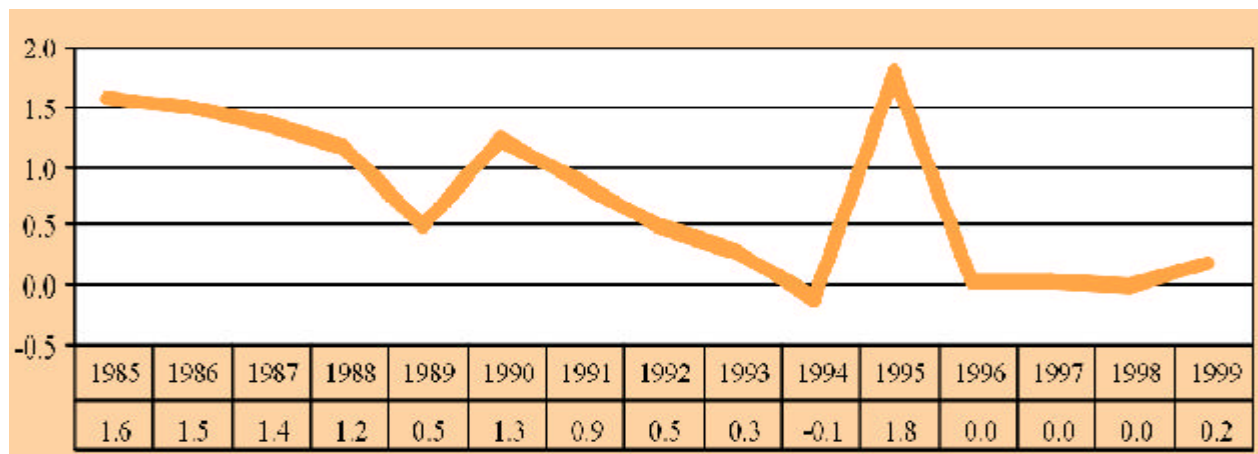
Area ('000 km²):		27.8
Population (millions):	2000	7.0
Capital city:		Bujumbura
Official language:		French and Kirundi
Currency:		Burundi Franc
Exchange rate (period average):	2000	Bufr720.7=\$1
GDP in current prices (millions of dollars):	1999	816.7
Exports of goods and services (millions of dollars):	1999	51.2
Imports of goods and services (millions of dollars):	1999	129.1
Official development assistance (millions of dollars):	1999	52.0
External debt (millions of dollars):	2000	1,095

Inward FDI: geographical breakdown, by source (Millions of dollars)

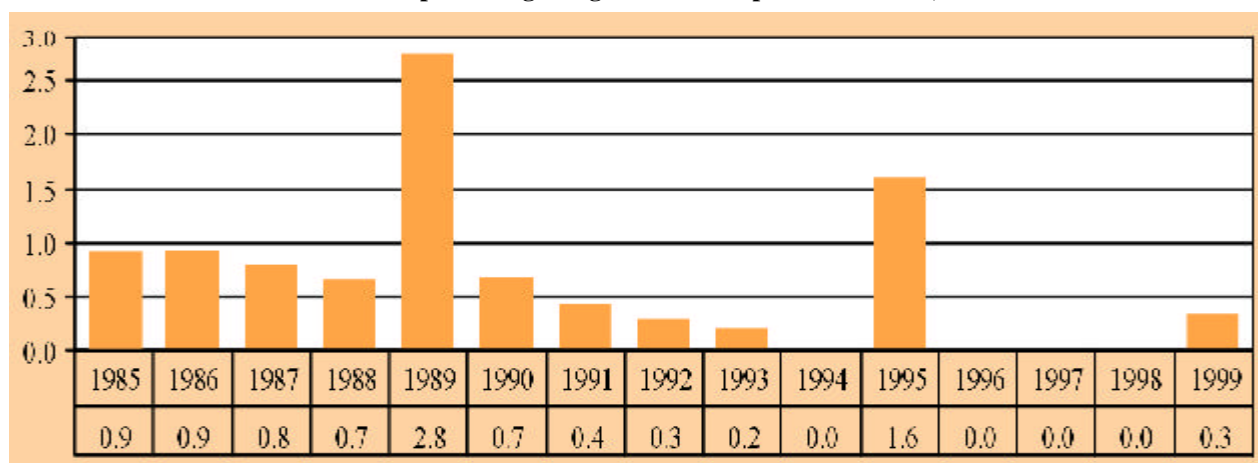
Region/economy	Inflows	Year	Inward stock	Year
Developed economies				
Belgium/Luxembourg	0.2	1998
France	0.2	1997
United States	-1.0	1985	1.0	1984
Developing economies				
China	0.7 ^a	1995

^a Approval data.

FDI inflows, 1985-1999 (Millions of dollars)



FDI inflows as a percentage of gross fixed capital formation, 1985-1999



BITs, 1 January 2000

Economy	Date of signature
Belgium/Luxembourg	13 April 1989
Germany	10 September 1984
United Kingdom	13 September 1990

Largest foreign affiliates, 1999

Company	Home economy	Industry	Sales (\$million)	Employment	Year of establishment
Brasseries Et Limonaderies Du Burundi Sarl	Netherlands	Bottled and canned soft drinks	46.2	1 350	1997
Chanic Burundi S A R L	France	Farm/garden machinery and equipment	1.6	51	..
Ami Burundi S A R L	Belgium

Other relevant information

- **Membership of relevant international agreements as of April 2001:** ICSID, MIGA, TRIMs, GATS, TRIPS
- **Address and website of investment promotion agency:** None
- **Fortune 500 investors:** Suez Lyonnaise des Eaux.
- **Member of WAIPA as of March 2001:** No