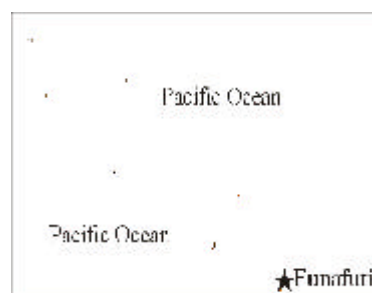
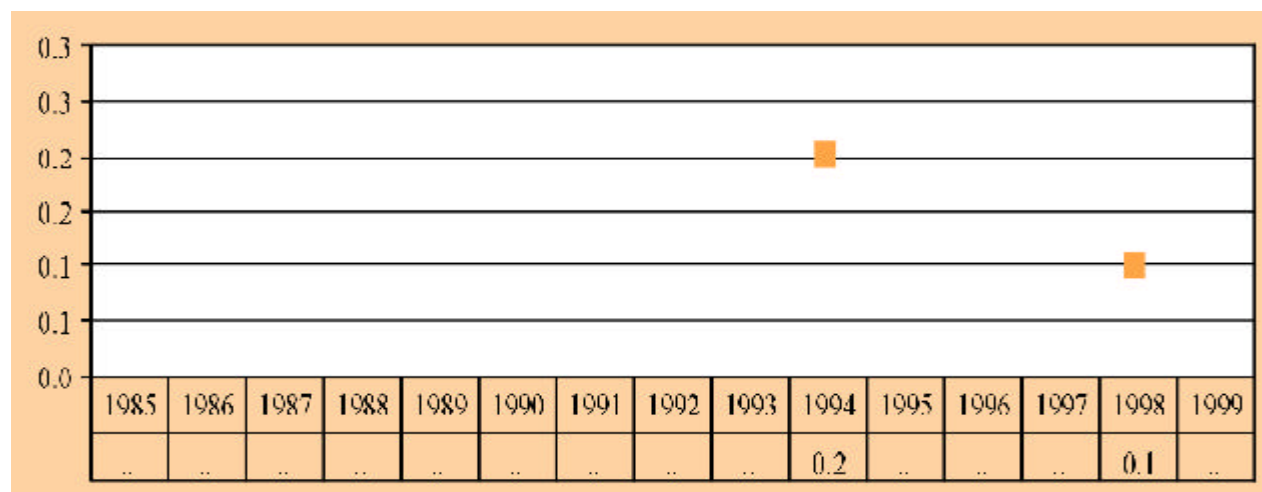


Tuvalu



Area (km²):		30.0
Population (millions):	2000	10.8
Capital city:		Funafuti
Official language:		Tuvaluan and English
Currency:		Tuvaluan dollar and Australian dollar
Exchange rate (period average):	1999	\$T1.5=\$A1.5=\$1
GDP in current prices (millions of dollars):	1995	7.8
Exports of goods and services (millions of dollars):	1989	0.2
Imports of goods and services (millions of dollars):	1989	4.4
Official development assistance (millions of dollars):	1999	3.4
External debt (millions of dollars):	1998	..

FDI inflows, 1985-1999 (Millions of dollars)



Other relevant information

- **Membership of relevant international agreements as of April 2001:** MIGA, TRIMs, GATS, TRIPS
- **Address and website of investment promotion agency:** None
- **Fortune 500 investors:** None
- **Member of WAIPA as of March 2001:** No

