

LANDLOCKED DEVELOPING COUNTRIES

FDI inflows, top 5 host economies, 2014

(Value and change)

2014 Inflows

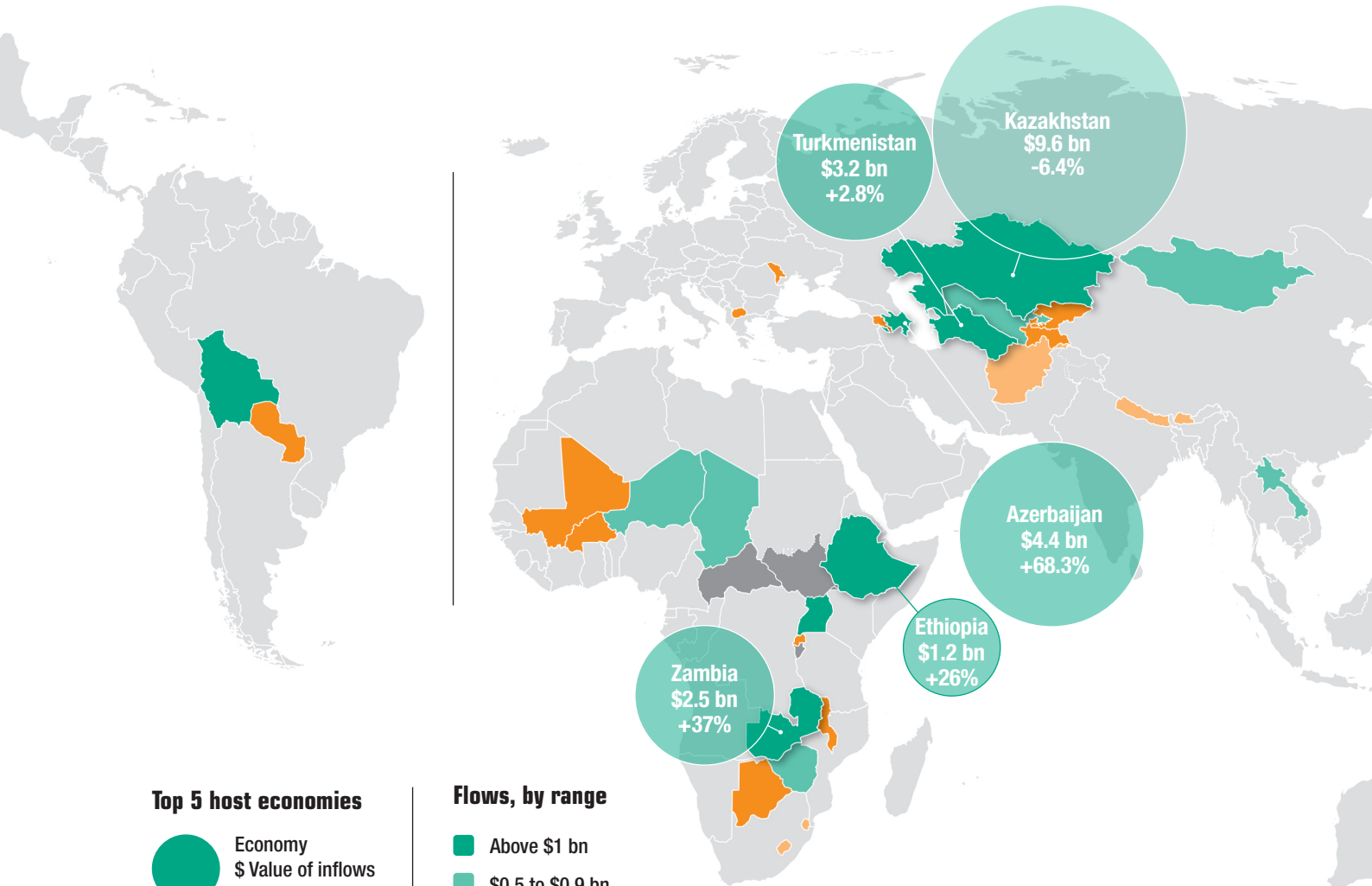
\$ 29.2 bn

2014 Decrease

-2.8%

Share in world

2.4%



Top 5 host economies

● Economy
\$ Value of inflows
2014 % Change

Flows, by range

■ Above \$1 bn
■ \$0.5 to \$0.9 bn
■ \$0.1 to \$0.5 bn
■ \$10 to \$99 mn
■ Below \$10 mn

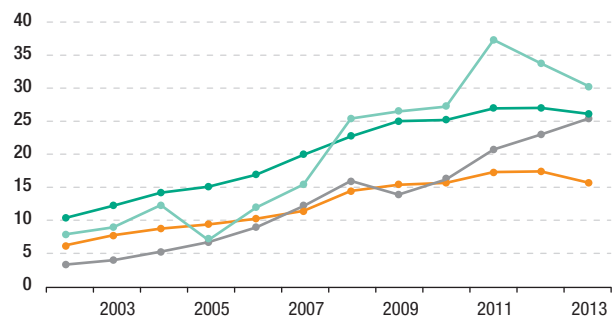
Outflows: top 5 home economies

(Billions of dollars, and 2014 growth)

Kazakhstan	\$3.6	+59%
Azerbaijan	\$2.2	+48%
Mongolia	\$0.1	+147%
Zimbabwe	\$0.07	+167%
Burkina Faso	\$0.06	+1.3%

FDI inflows, ODA flows and remittances to LLDCs, 2002–2013 (Billions of dollars)

■ Total ODA ■ Bilateral ODA ■ FDI inflows ■ Remittances



Source: UNCTAD.

Note: The boundaries and names shown and the designations used on this map do not imply official endorsement or acceptance by the United Nations. Final boundary between the Republic of Sudan and the Republic of South Sudan has not yet been determined. Final status of the Abyei area is not yet determined. Dotted line in Jammu and Kashmir represents approximately the Line of Control agreed upon by India and Pakistan. The final status of Jammu and Kashmir has not yet been agreed upon by the parties.

HIGHLIGHTS

- FDI flows: largest external capital flow to LLDCs
- Top five economies receive 71 per cent of flows
- Developed countries: largest holders of FDI stock in LLDCs

Figure A.

FDI inflows, 2008–2014

(Billions of dollars)

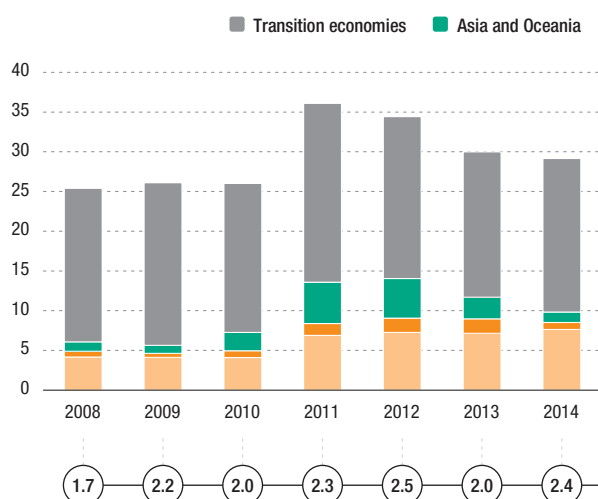


Figure B.

FDI outflows, 2008–2014

(Billions of dollars)

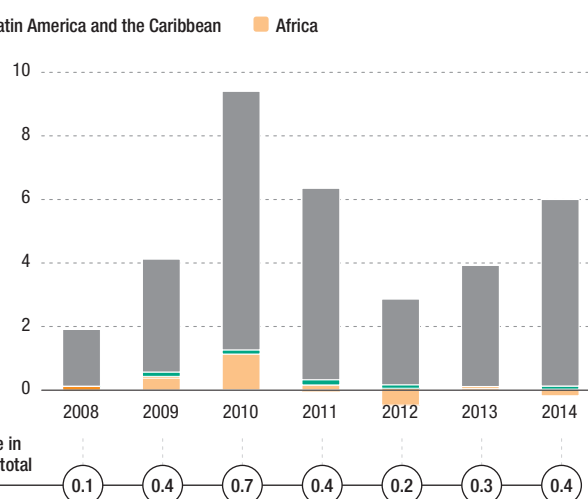


Table A.

Announced greenfield FDI projects by industry, 2013–2014

(Millions of dollars)

Sector/industry	LLDCs as destination		LLDCs as investors	
	2013	2014	2013	2014
Total	17 712	16 398	1 047	1 220
Primary	1 201	402	-	-
Mining, quarrying and petroleum	1 201	402	-	-
Manufacturing	5 410	8 661	404	654
Textiles, clothing and leather	308	2 446	39	-
Non-metallic mineral products	1 634	2 488	75	-
Metals and metal products	279	738	69	-
Motor vehicles and other transport equipment	613	773	-	-
Services	11 102	7 335	643	566
Electricity, gas and water	5 213	982	-	-
Trade	524	2 023	132	11
Transport, storage and communications	2 427	1 238	138	399
Finance	1 535	1 481	354	149

Table B.

Announced greenfield FDI projects by region/country, 2013–2014

(Millions of dollars)

Partner region/economy	LLDCs as destination		LLDCs as investors	
	2013	2014	2013	2014
World	17 712	16 398	1 047	1 220
Developed economies	9 943	6 127	186	56
France	912	543	-	-
Iceland	4 000	-	-	-
United States	513	2 770	3	-
Australia	560	-	35	-
Developing economies	6 575	8 723	525	1 076
South Africa	931	864	42	15
China	380	1 893	-	395
Korea, Republic of	130	529	35	-
India	742	810	52	-
Transition economies	1 194	1 548	335	89
Russian Federation	729	1 414	34	-

Table C.

Cross-border M&As by industry, 2013–2014

(Millions of dollars)

Sector/industry	Sales		Purchases	
	2013	2014	2013	2014
Total	258	-1 062	6	270
Primary	-22	44	2	-250
Mining, quarrying and petroleum	-22	34	2	-250
Manufacturing	257	285	-	57
Food, beverages and tobacco	177	12	-	-
Paper and paper products	-	-101	-	-
Pharmaceuticals, medicinal chemicals and botanical products	15	51	-	-
Non-metallic mineral products	-	314	-	-1
Services	23	-1 391	3	463
Electricity, gas, water and waste management	-	-1 279	-	-
Transportation and storage	-	30	-	4
Information and communication	20	1	-	-
Financial and insurance activities	3	-158	3	459

Table D.

Cross-border M&As by region/country, 2013–2014

(Millions of dollars)

Region/country	Sales		Purchases	
	2013	2014	2013	2014
World	258	-1 062	6	270
Developed economies	99	-2 456	2	14
Luxembourg	20	-277	-	-
Netherlands	359	-1 374	-	-
United Kingdom	-448	-1 152	2	-
Switzerland	331	319	-	-
Developing economies	160	216	3	257
South Africa	-	-125	-	-
Peru	-	307	-	-
China	56	526	-	-
Hong Kong, China	-77	-507	-	-
Transition economies	-	1 177	-	-1
Russian Federation	-	1 147	-	-1