

Eritrea



Area ('000 km²):		117.6
Population (millions):	2001	4.1
Capital city:		Asmara
Official language:		Tigrinya, Arabic and French
Currency:		Nakfa
Exchange rate (period average):	2000	Nakfa9.5=\$1
GDP in current prices (millions of dollars):	2000	607.6
Exports of goods and services (millions of dollars):	1999	65.6
Imports of goods and services (millions of dollars):	1999	508.8
Official development assistance (millions of dollars):	2000	111.9
External debt (millions of dollars):	2000	311

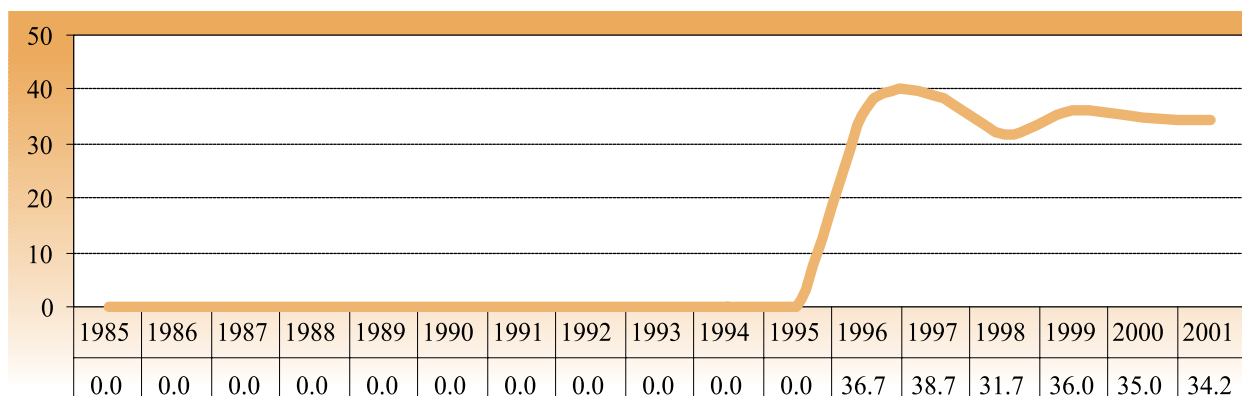
Inward FDI: geographical breakdown, by source

(Millions of dollars)

Region/economy	Inflows	Year	Inward stock	Year
United States	-3.0	1998	-2.0	2000

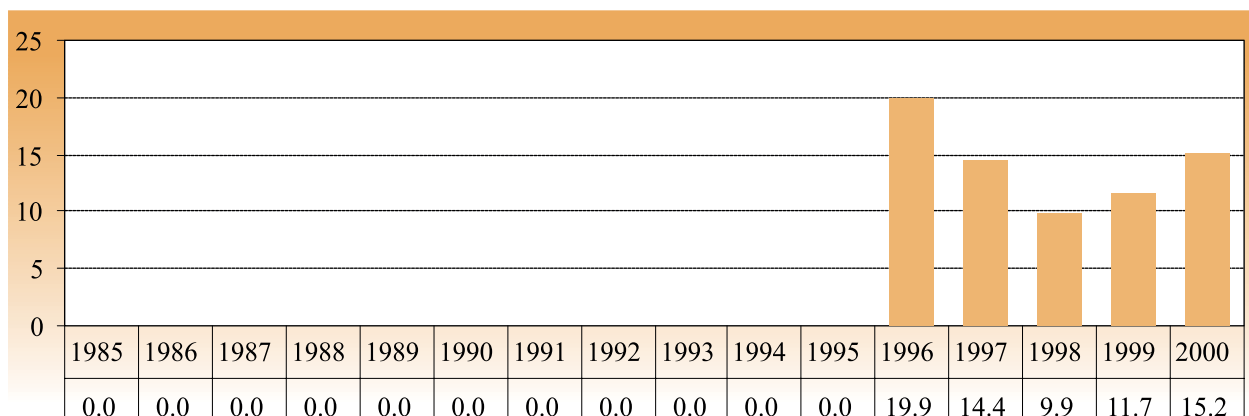
FDI inflows, 1985-2001^a

(Millions of dollars)



^a Flows from DAC member countries only.

FDI inflows as a percentage of gross fixed capital formation, 1985-2000



Largest cross-border M&A deals, 1987-2001

Acquired company	Industry	Acquiring company	Home economy	Value (\$ million)	Year
Zara Gold Mine	Gold ores	Dragon Mining NL	Australia	27.0	1999
Gold Corp of Africa Ltd	Gold ores	Marchmont Gold Corp	Canada	-	2000

BITs, 1 January 2002

Economy	Date of signature
Italy	6 February 1996

Other relevant information

- **Membership of relevant international agreements as of June 2002:** MIGA
- **Address and website of investment promotion agency:** Eritrea Investment Center
P.O Box 921 Asmara; Tel: (921) 11 18 822; Fax: (921) 11 24 293
- **Fortune Global 500 investors:** None.
- **Member of WAIPA as of June 2002:** No