

Togo



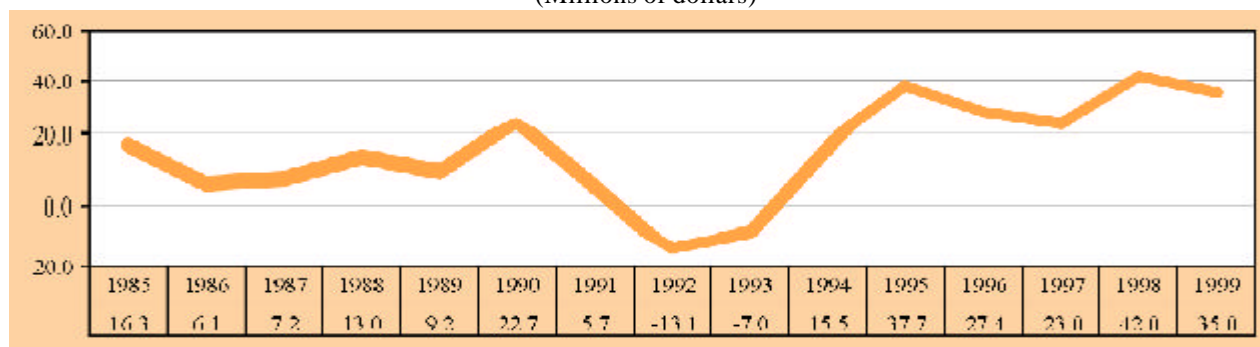
Area ('000 km²):		56.8
Population (millions):	2000	4.7
Capital city:		Lomé
Official language:		French
Currency:		CFA franc
Exchange rate (period average):	1999	CFAfr615.7=\$1
GDP in current prices (millions of dollars):	1999	1,506.2
Exports of goods and services (millions of dollars):	1997	436.5
Imports of goods and services (millions of dollars):	1997	563.5
Official development assistance (millions of dollars):	1999	47.1
External debt (millions of dollars):	1998	1,448

Inward FDI: geographical breakdown, by source (Millions of dollars)

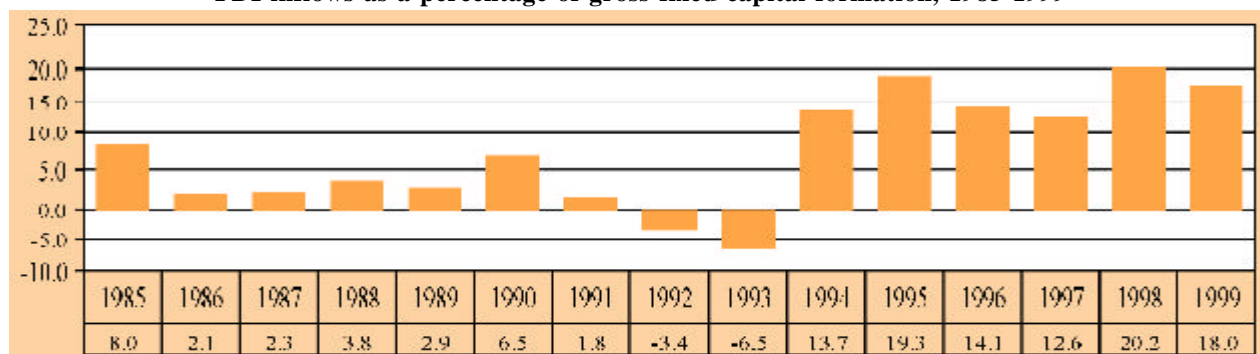
Region/economy	Inflows	Year	Inward stock	Year
Developed economies				
Belgium/Luxembourg	0.03	1997
France	8.0	1999
Germany	8.4	1988
Sweden	0.1	1993
United Kingdom	..	1988
United States	1.0	1999	10.0	1999
Developing economies				
China	0.2 ^a	1995
Malaysia	76.1	1997

^a Approval data.

FDI inflows, 1985-1999 (Millions of dollars)



FDI inflows as a percentage of gross fixed capital formation, 1985-1999



Largest cross-border M&A deals, 1987-1999

Acquired company	Industry	Acquiring company	Home economy	Value (\$ million)	Year
Brasserie du Benin	Food and kindred products	Castel Freres	France	..	1997
Meridien BIAO-Togo (Banque)	Commercial banks, bank holding companies	Belgolaise Bank (Generale de)	Belgium	..	1995

BITS, 1 January 2000

Economy	Date of signature
Germany	16 May 1961
Switzerland	17 January 1964
Tunisia	13 September 1987

DTTs, 1 January 2000

Economy	Date of signature
France	24 November 1971
Tunisia	11 February 1987

Largest foreign affiliates, 1999

Company	Home economy	Industry	Sales (\$ million)	Employment	Year of establishment
Togo Et Shell S A	Netherlands	Petroleum products except bulk terminals	25.2	96	..
Societe De Gerance De Representation Et Courtage Sarl	France	Insurance carriers	0.2	8	..
Scoa Togo Sa	France	Groceries and related products	..	210	..
Commerciale Et Industrielle De La Cote De L' Afrique Et Compagnie Francaise de L'Afrique Occidentale	France	Vehicle supplies and new parts	..	80	1972
Togo Representation	India	Groceries and related products	..	20	..

Other relevant information

- **Membership of relevant international agreements as of April 2001:** ICSID, MIGA, TRIMs, GATS, TRIPS
- **Address and website of investment promotion agency:** Banque Nationale d'Investissement (BNI)
11, Avenue du 24 janvier BP 2682 Lomé; Tel: (228) 21 6221; Fax: (228) 216 225
- **Fortune 500 investors:** Groupe Pinault-Printemps.
- **Member of WAIPA as of March 2001:** No