



Transport and  
logistics

# Train for Trade II

EU-UNCTAD joint Programme for Angola



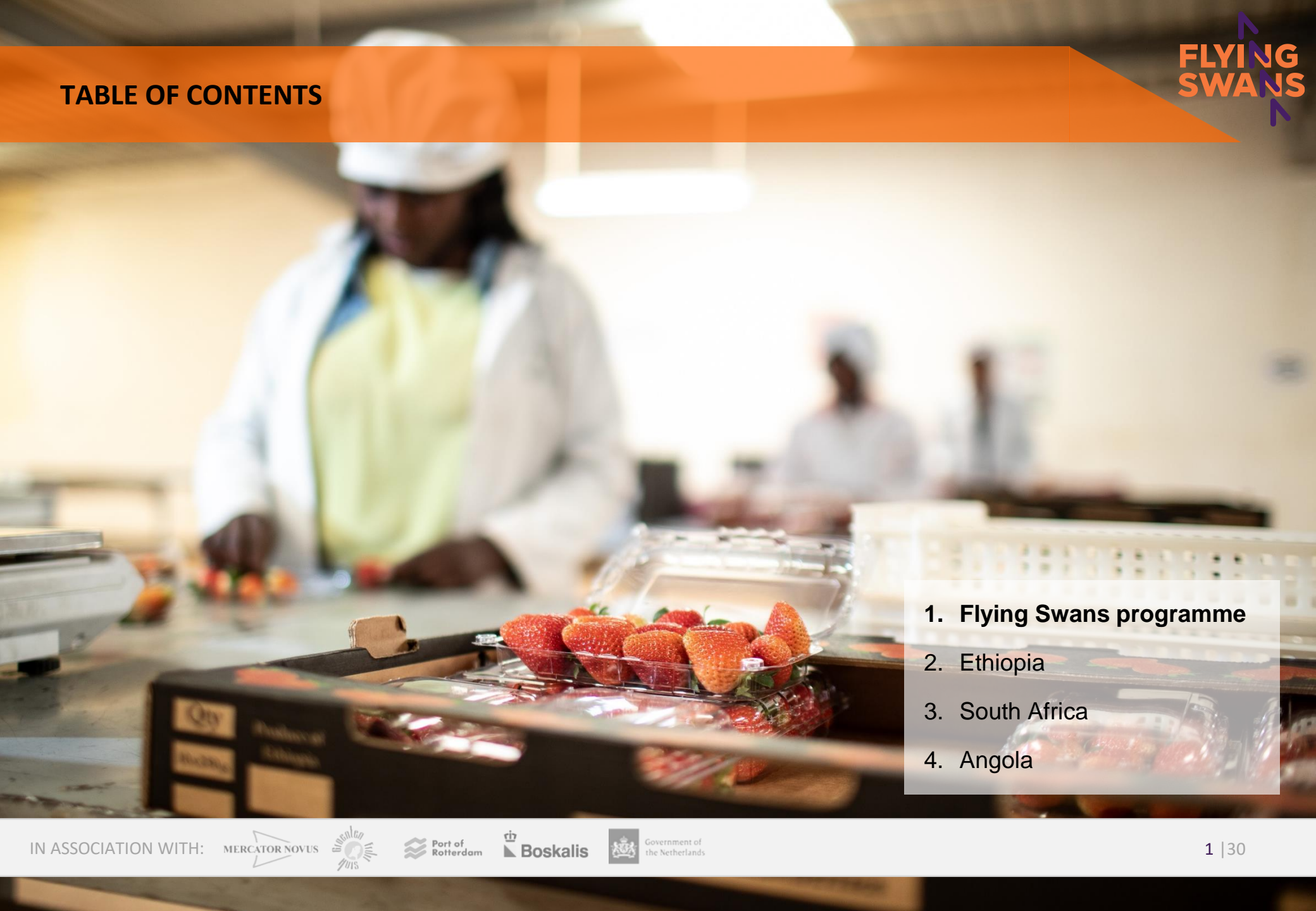
## WEBINARS DE CAPACITAÇÃO EM PPPs PARA PLATAFORMAS LOGÍSTICAS EM ANGOLA

**Public Private Partnerships in Agro-logistics**  
***Jeroen Bos (Flying Swans)***

**Luanda, Angola / On-line, 15 e 16 de Julho de 2021.**



# TABLE OF CONTENTS



- 1. **Flying Swans programme**
- 2. Ethiopia
- 3. South Africa
- 4. Angola

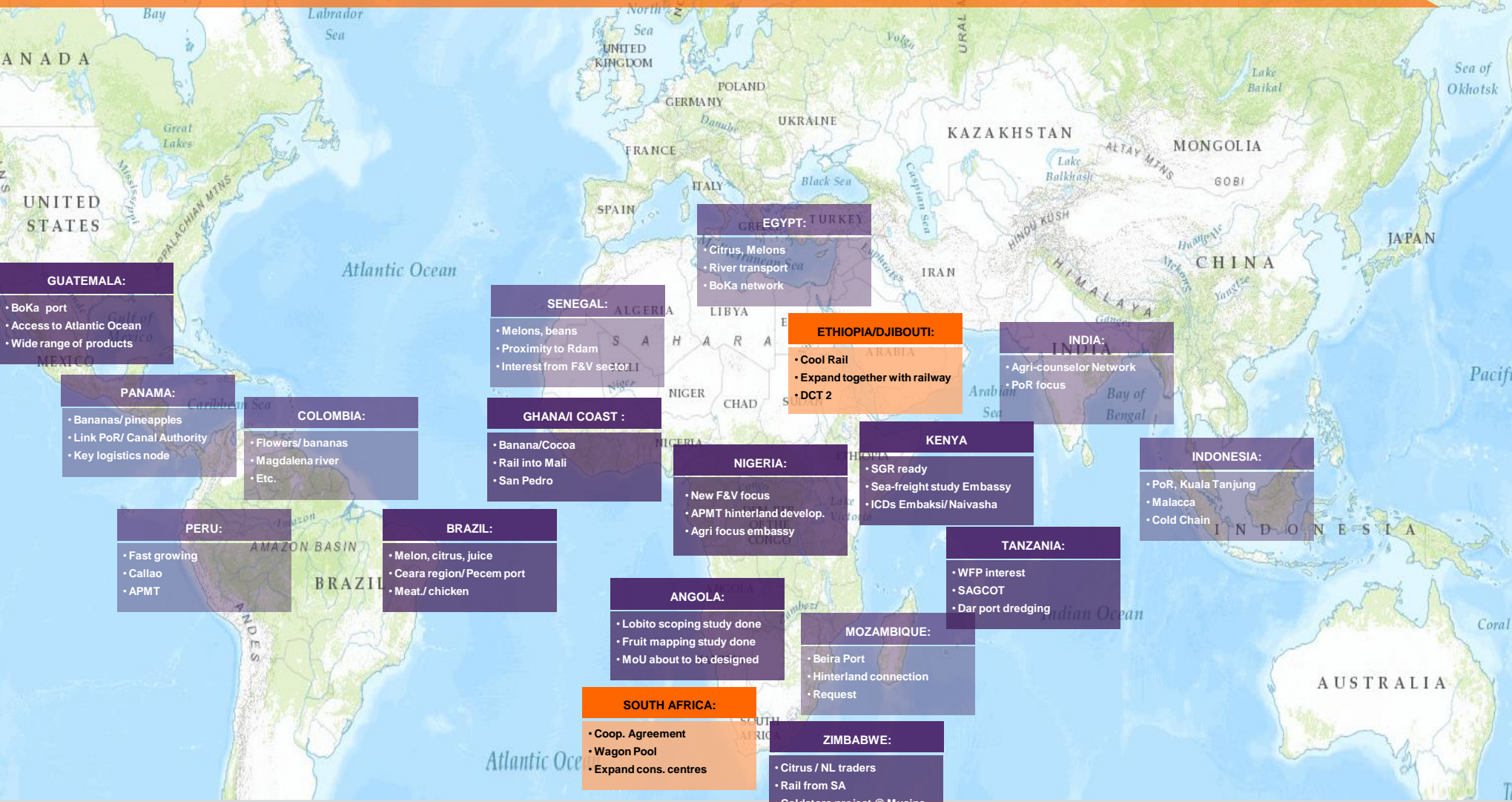
# PPP INTERPLAY BETWEEN MAINPORT AND GREENPORT BUILDING BLOCKS



- PRODUCTION INFRASTRUCTURE
- TRADING INFRASTRUCTURE
- LOGISTICS INFRASTRUCTURE



# STRATEGIC AGENDA



# TABLE OF CONTENTS



- 1. Flying Swans programme
- 2. **Ethiopia**
- 3. South Africa
- 4. Angola

# ETHIOPIAN CHALLENGE TO UNLOCK FRUIT & VEGETABLE INDUSTRY

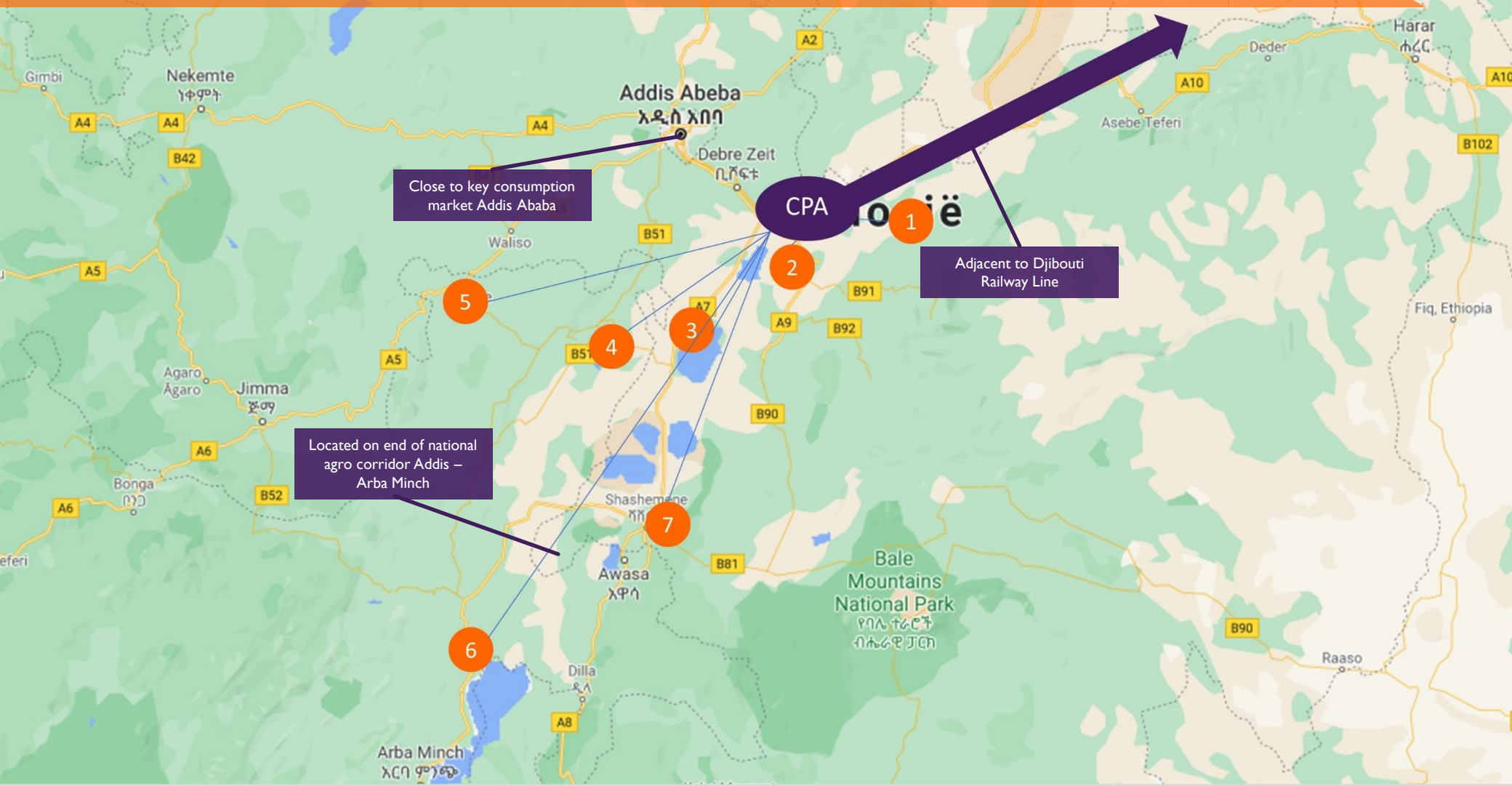
Bring empty container to farm: **USD 2,500**



Truck full container to deepsea terminal: **USD 2,500**

**DIFFICULT TO COMPETE WHEN HINTERLAND TRANSPORT COSTS USD 5,000**

# COOL PORT ADDIS AT PRIME LOCATION FOR HORTICULTURE INDUSTRY



# COOL PORT ADDIS – DIFFERENT FUNCTIONALITIES SERVIN DIFFERENT MARKETS



International inland container terminal

Fixed cool wagon project to supply Djibouti local market

Accessible to Isuzu trucks of smaller farmers

Fully integrated in rail terminal for max efficiency & product quality

Full reefer stack

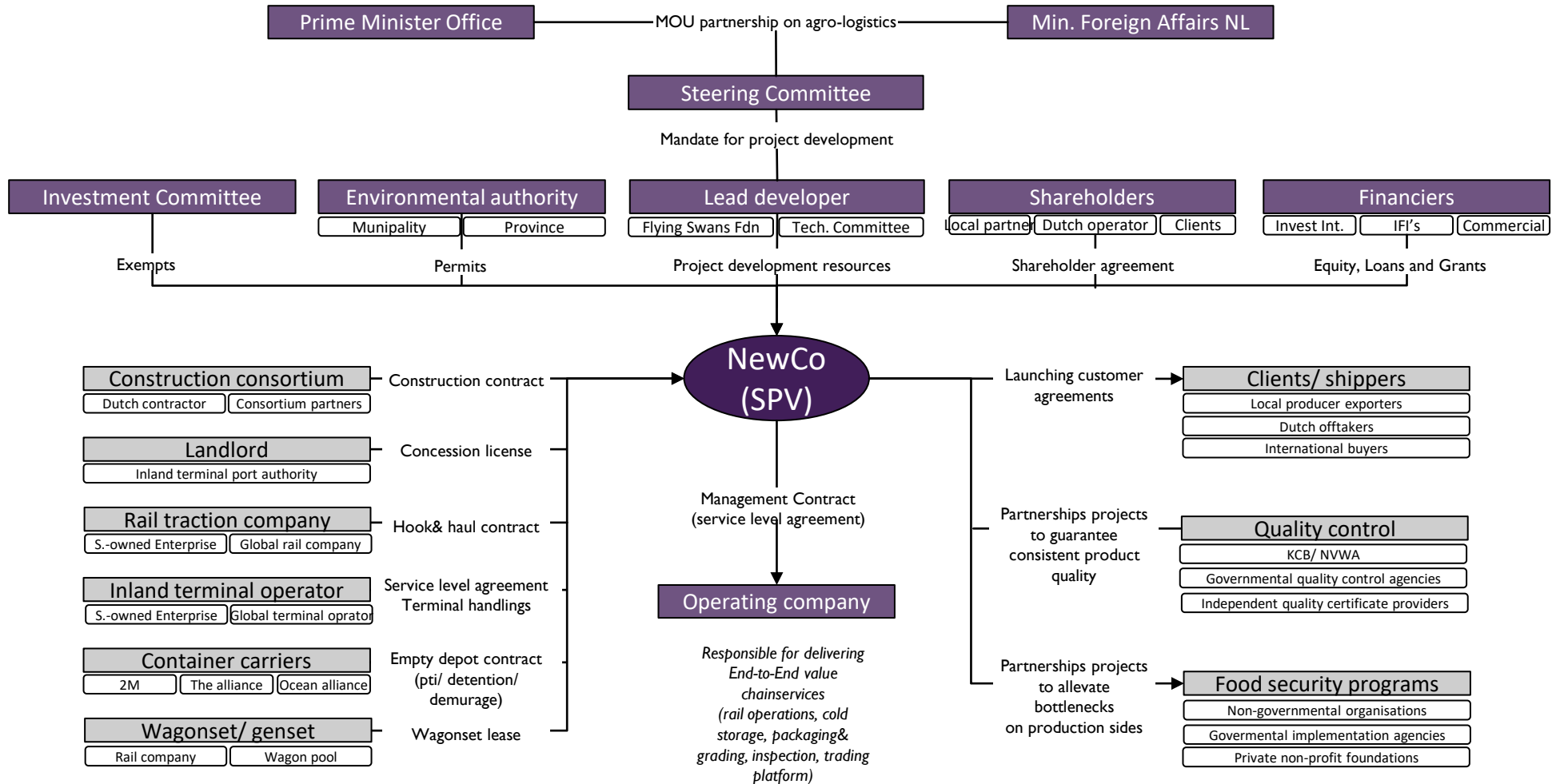
Empty reefer stack



# FIRST RESULTS: SUCCESSFUL TRIAL SHIPMENT OF AVO'S TO EUROPE



# COOL PORT ADDIS - WORKING TOWARDS BANKABLE BUSINESSES



# AGENDA



1. Flying Swans programme
2. Ethiopia
3. **South Africa**
4. Angola

# MAXIMISING MODAL SHIFT FOR SOUTH AFRICA'S FRUIT EXPORT INDUSTRY



# LIMPOPO CONSOLIDATION CENTRE | LOCATION



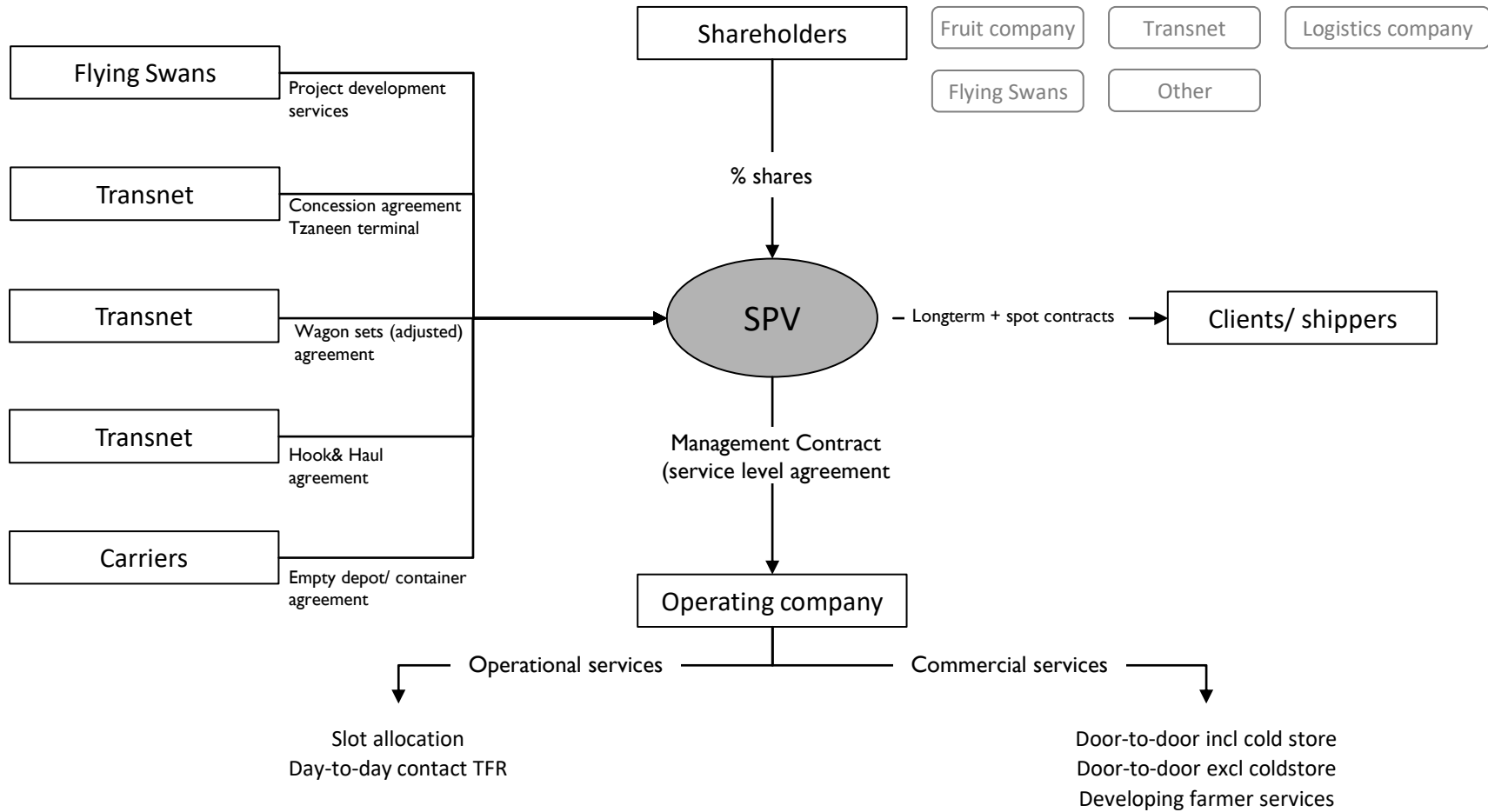
# LIMPOPO CONSOLIDATION CENTRE | RECONFIGURED SETUP



IN ASSOCIATION WITH:



# LIMPOPO CONSOLIDATION CENTRE - WORKING TOWARDS BANKABLE BUSINESSES



# AGENDA

THE DEMOCRATIC  
REPUBLIC  
OF THE CONGO

FLYING  
SWANS



1. Flying Swans programme
2. Ethiopia
3. South Africa
4. Angola

IN ASSOCIATION WITH:





# ANGOLA/ LOBITO – MAIN TAKE-AWAYS FIELD TRIPS

- Fits well in FS portfolio: Shift to Africa, West Africa
- First explorations have already been done
- Existing infrastructure; port & rail
- Production on the coast and along rail corridor
- Net import of reefer containers (balance)
- Next to reefer highway South Africa-Europe
- Existing production
- Government support
- Willingness to invest

## EU CIF prices

1000 EURO/ton	2016	2017	2018	2019R	% 2016 - 2019
Ananas	€ 757	€ 747	€ 684	€ 699	-8%
Avocado	€ 2,360	€ 2,386	€ 1,726	€ 2,427	3%
Druiven	€ 2,113	€ 2,070	€ 2,178	€ 2,103	0%
Mango	€ 1,362	€ 1,278	€ 1,166	€ 1,431	5%
Meloenen	€ 773	€ 776	€ 784	€ 767	-1%
Watermeloenen	€ 563	€ 620	€ 641	€ 596	6%
Sweet potato	€ 836	€ 702	€ 672	€ 862	3%
Green bean	€ 1,845	€ 1,756	€ 1,635	€ 1,815	-2%
Garlic	€ 2,116	€ 2,101	€ 1,379	€ 1,653	-22%
Ginger	€ 1,029	€ 1,289	€ 1,153	€ 1,270	23%

## Angola SPV?

