



Peter Schmidt
*Senior Advisor in
Sustainable
Agriculture and Value
Chains,
Helvetas Swiss
Intercooperation*



Harol Gutierrez
*CITES Flora
Specialist, Ministry of
Environment of Peru*



Moderator:
Jane Carter
*Senior Advisor,
Helvetas Swiss
Intercooperation*



Michiel Hendriksz
*Executive Director,
FarmStrong
Foundation, and
member of the Swiss
Platform for
Sustainable Cocoa*

9 December 2021
1.30 - 2.15 pm (CET)



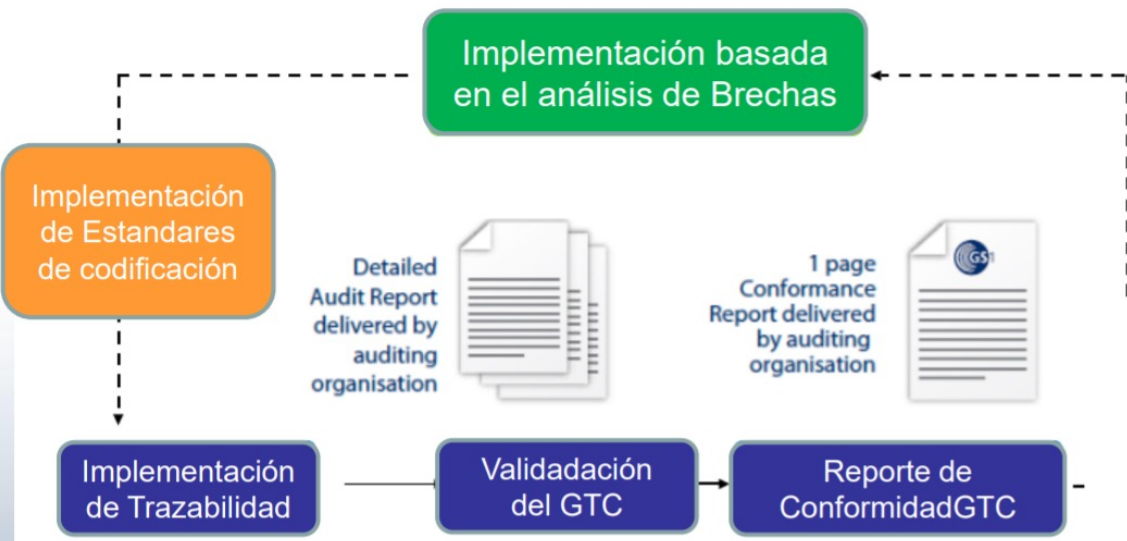
6th BioTrade Congress
Trade and biodiversity for a positive future

Parallel session 1:
*Unpicking the value chain:
Challenges and experiences in traceability*

Orchid traceability

Harol Gutierrez
CITES Flora Specialist
Ministry of Environment-Peru

Pilot



❑ Objective: Traceability Manual and the elaboration of the Data Master, the elaboration of formats and registration of information both in the production center and in the sales room, the identification of orchids in the production centers and sales room of the nursery with GTIN-13 standard barcode

❑ The pilot nursery (Agro Oriente Viveros S.A.C.) is one of the largest and most modern nurseries in Peru. It has a stock of more than 200,000 plants and 1,000 species, and it has modern laboratories that allow micropropagation in vitro on a commercial scale.

Challenges

Legal origin

Breeding parents
identified
(coded)

Production plan
with traceable
individuals

Multi stakeholder

(nursery men and collectors)

Multilevel

(National, sub national
and local)

Multi stakeholder

(Administrative Authority, company)

Nursery conditioning

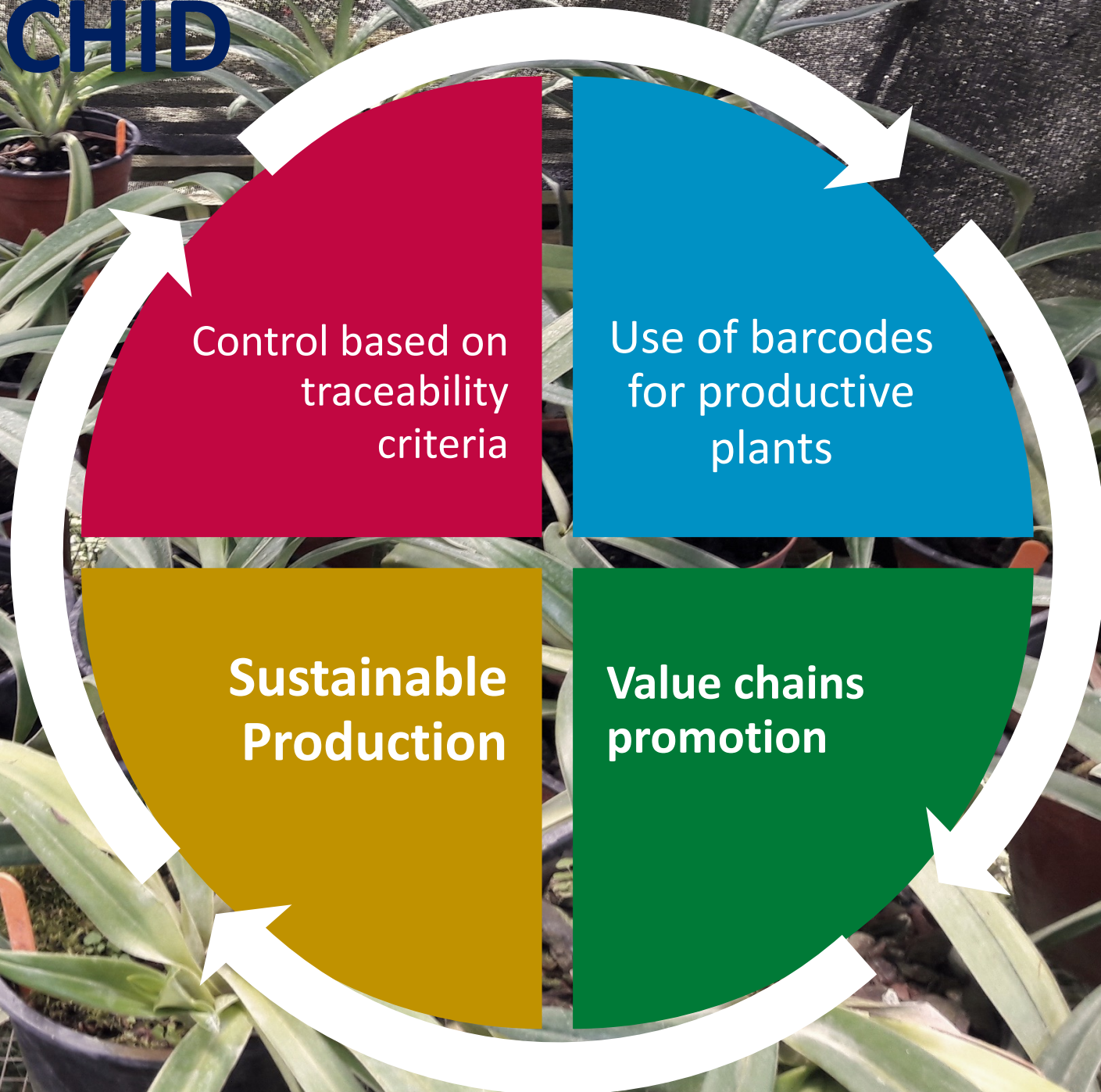
In vitro production

Codification

Legal origin



FIGHT ILLEGAL ORCHID EXTRACTION



Control based on traceability criteria

Use of barcodes for productive plants

Sustainable Production

Value chains promotion

It is possible to have mechanisms that allow knowing the origin and determining the provenance of an orchid sold anywhere in the world

Codification

Reduction of risks associated with the trade in orchids from illegal sources and take advantage of their opportunities through the control of production from the laboratory - nursery - sale and post-sale

Management

Reduction of losses due to the management of the nursery before the project, the inventories of the production plan (plants ready for trade) were exceeded by more than 80%.

•TRACEABILITY OF BASMATI & JASMIN RICE

- Peter Schmidt
- Senior Advisor Agriculture and Food
- BioTrade Congress VI, 9.12.2021




The case: Basmati Rice from India and Jamin Rice from Thailand



Tra

PATHKHOT NBF JAIVIK SAMUH					
S.No.	Farm No.	Farmer Name	District Name	State Name	Sourced Quantity(MT) Basmati paddy
1	UT110500068401	Shiv Giri Goshwami	Nainital	Uttarakhand	1.98
2	UT110500068601	Rajiv Singh Mehra	Nainital	Uttarakhand	1.2
3	UT11050006			khand	2.64
4	UT11050007			khand	2.58
5	UT11050007			khand	6.54
6	UT11050007			khand	0.9
7	UT11050007			khand	3.78
8	UT11050007			khand	1.92
9	UT11050007			khand	2.46
10	UT11050007			khand	0.84
11	UT11050007			khand	1.5
12	UT11050007			khand	0.9
13	UT11050007			khand	3.72
14	UT11050007			khand	2.58
15	UT11070010			khand	1.5
16	UT11070010			khand	0.9
17	UT11070010			khand	6.48




FAIRTRADE
 MAX HAVELAAR

WAS IST FAIRTRADE **PRODUKTI**

1028700 *

Volltextsuche Firma Distribu

1028700

 Produkt-Label
  Labels für Einzelzutaten
 Bio Neu

1-3 von 3

1

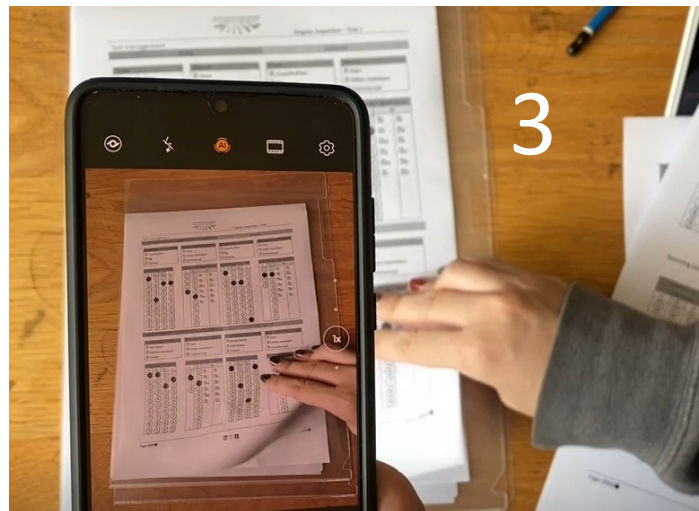
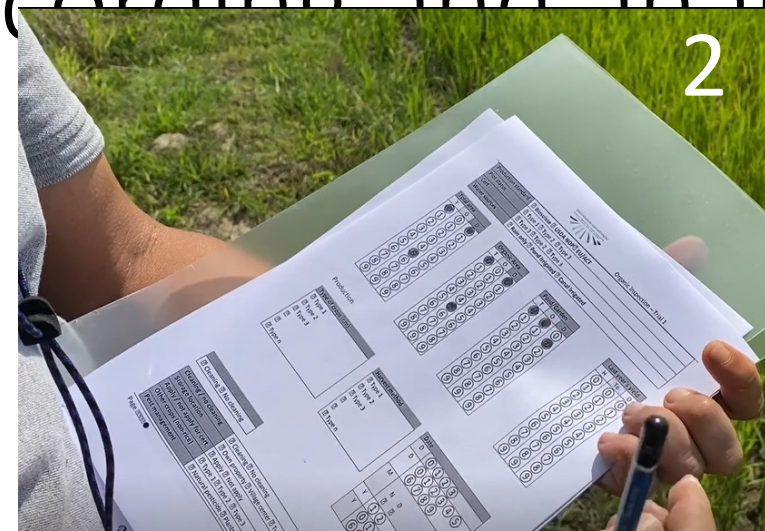
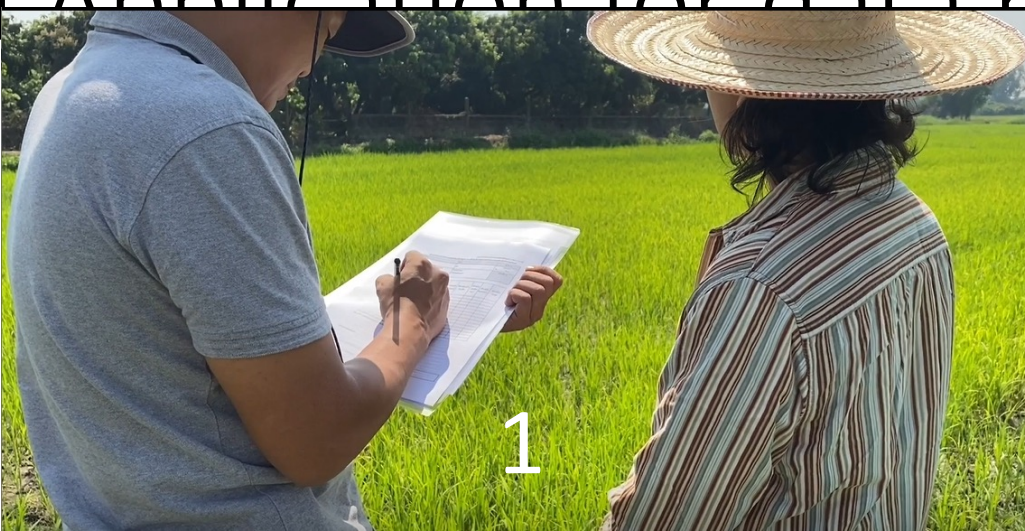


Good Karma



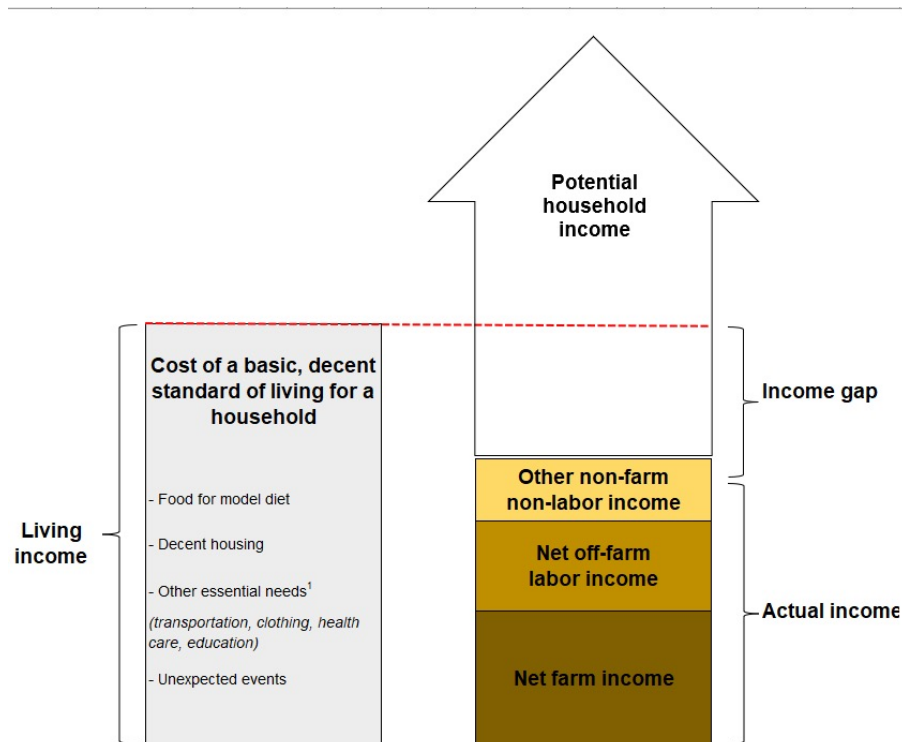
naturaplan
Basmati Rice
1kg
bio

S2i Application for data recording and analysis



<https://mediashare.s2i-software.com/S2i-AsiaAgriTechChallenge.mov>

The way forward (1): Living Income



- “Beyond fair. Equal”
[Equal Profit](#)
- Living income for farming families
- Distribution of the profit proportionally to the costs of value chain actors
- Application (such as S2i) for timely data recording and quality check for all actors in a value chain

Th



Landscape Approach

- What are the risks and chances in the production areas (key words: climate change, water availability, biodiversity)
- Participatory analysis process with the key actors in the area
- Development of long-term management plans
- Identification of actors that are ready to invest (e.g. [Landscape Resilience Fund](#))

Fair and Good – for People and Planet

**THANK
YOU!**

This project is supported by the
Coop Sustainability Fund.



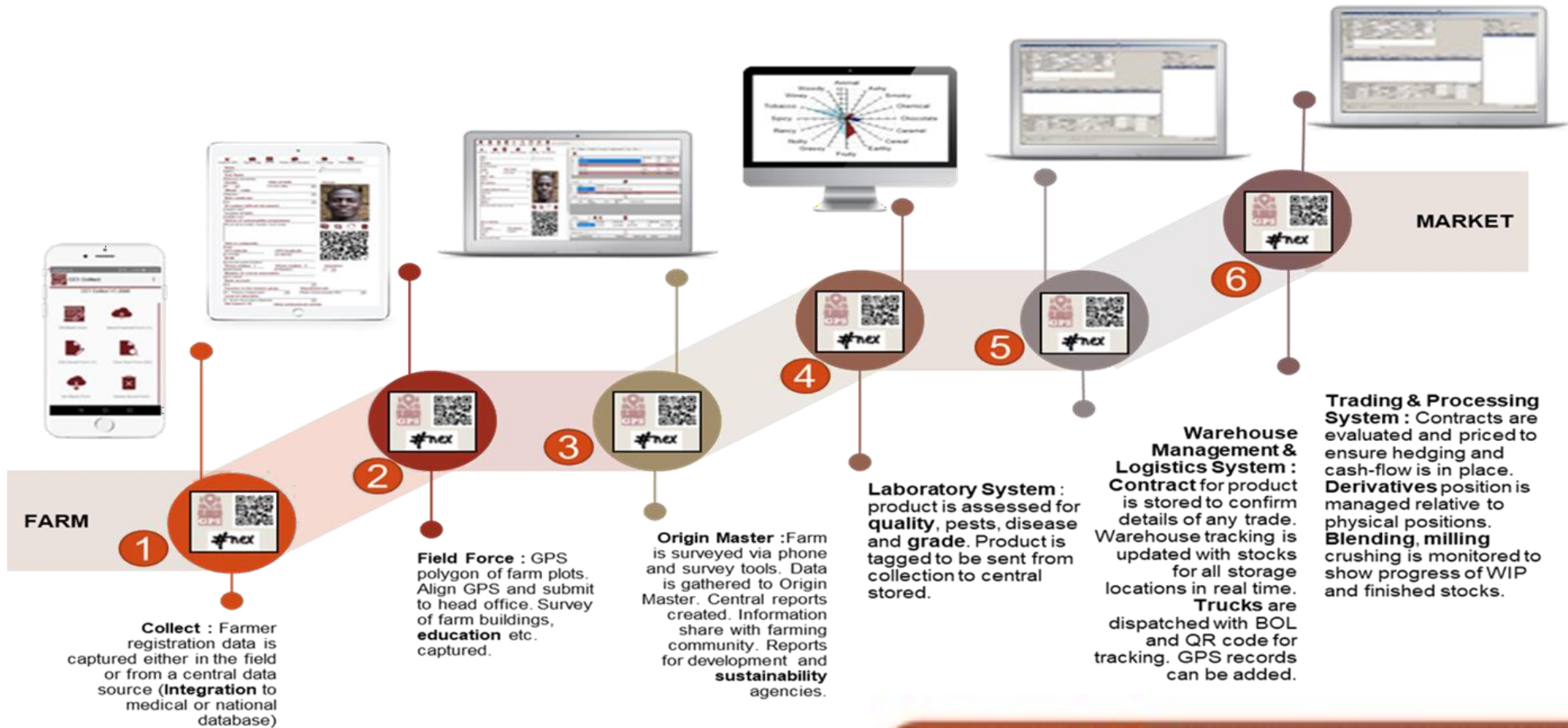


Physical traceability of commodities : why, what, where, how, for whom, and at what cost ?

Tracing an illusion in Utopia

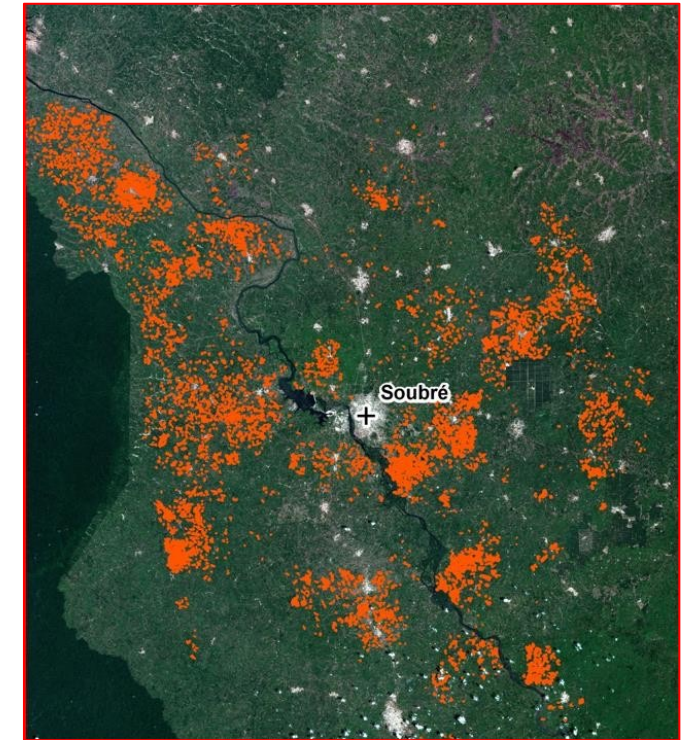
BioTrade Congress VI: Trade and biodiversity for a positive future



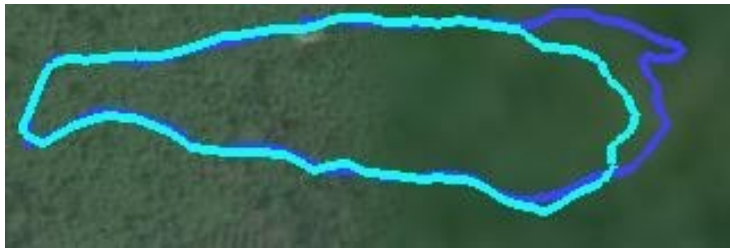


Events are tracked by:

- Blockchain
- QR Code
- GPS Location







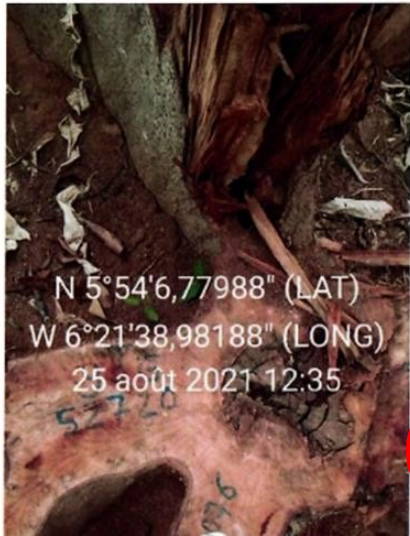


Purposeful technology

Traceability

that matters most

Mobile money systems or digital transfers to
ensure traceability of premium
and
ensure farm gate prices are paid in full





Roll-out of
purposeful
technology