

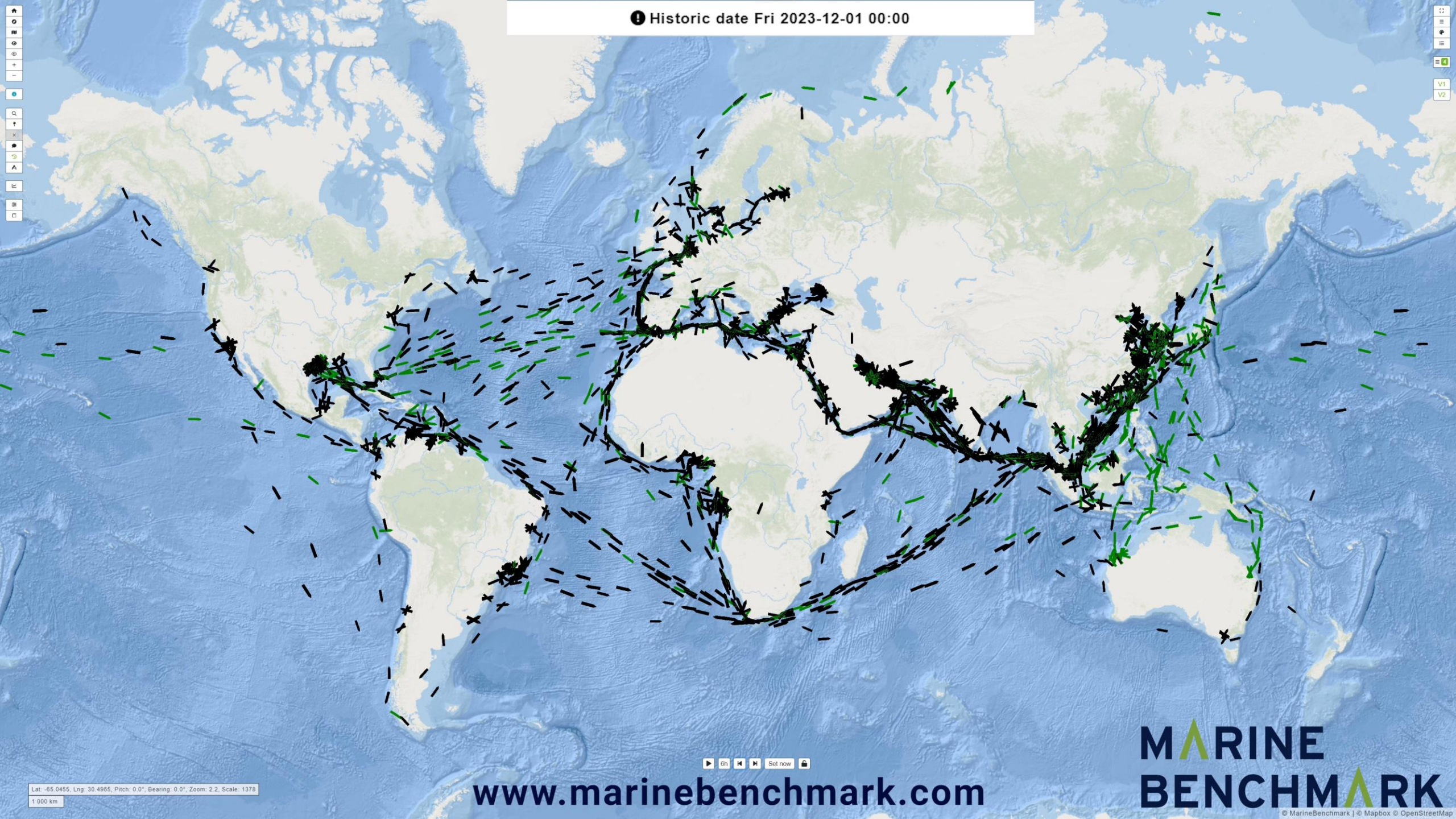
Ports as energy hubs for **Sustainable** Ports

- a part and enabler of sustainable
transport ecosystems



Dr. Mikael Lind
(Adjunct) professor Maritime Informatics
Research Institutes of Sweden
Chalmers University of Technology

Historic date Fri 2023-12-01 00:00



6h Set now

Lat -65.0455, Lng 30.4965, Pitch 0.0°, Bearing 0.0°, Zoom 2.2, Scale 1378
1 000 km

www.marinebenchmark.com

MARINE
BENCHMARK

© MarineBenchmark | © Mapbox © OpenStreetMap



Global Supply Chain **Forum**

Barbados 21–24 May 2024



Transport and logistics node



Energy and digital/information node



Different modes of transports are included and interact



Consumer and supplier of sustainable energy for the sustainable transport system



Enabler for the transition towards a sustainable transport system



The Swedish vision of the Sustainable port





Global Supply Chain **Forum**
Barbados 21-24 May 2024

Maturity model for ports as Energy nodes

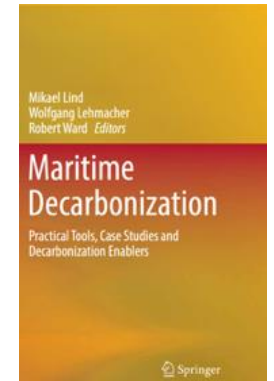


Illustration: Sandra Haraldson



Ports play an essential role for the production, storage, and provision of sustainable alternative fuels to visitors

Ports would benefit from moving to the forefront of decarbonization

The group of actors that are engaged in port operations needs to also include the energy sector

Cross-value chain collaboration is critical, requiring the port to collaborate with parties decarbonizing other value chains