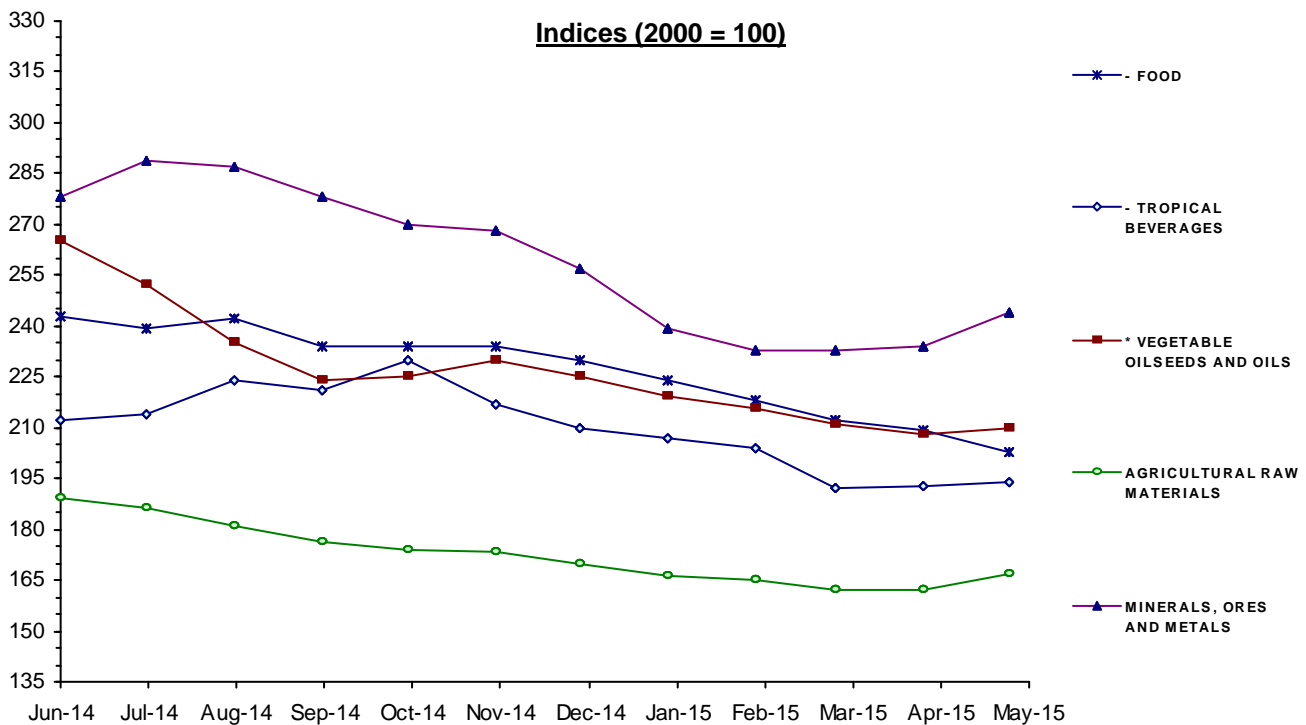


## MONTHLY INDICES OF FREE MARKET PRICES IN US DOLLARS

2000 = 100

Moving averages		Jun 14	Jul 14	Aug 14	Sep 14	Oct 14	Nov 14	Dec 14	Jan 15	Feb 15	Mar 15	Apr 15	May 15
Jun 13 to May 14	Jun 14 to May 15												
<b>ALL FOOD</b>													
<b>244</b>	<b>225</b>	243	238	240	232	233	232	228	222	216	210	208	203
<b>* TROPICAL BEVERAGES AND FOOD</b>													
<b>240</b>	<b>225</b>	240	237	240	232	234	233	228	222	216	210	207	202
<b>- TROPICAL BEVERAGES</b>													
<b>184</b>	<b>210</b>	212	214	224	221	230	217	210	207	204	192	193	194
<b>- FOOD</b>													
<b>247</b>	<b>227</b>	243	239	242	234	234	234	230	224	218	212	209	203
<b>* VEGETABLE OILSEEDS AND OILS</b>													
<b>270</b>	<b>227</b>	265	252	235	224	225	230	225	219	216	211	208	210
<b>AGRICULTURAL RAW MATERIALS</b>													
<b>200</b>	<b>173</b>	189	186	181	176	174	173	170	166	165	162	162	167
<b>MINERALS, ORES AND METALS</b>													
<b>292</b>	<b>259</b>	278	289	287	278	270	268	257	239	233	233	234	244
<b>PRICE INDEX - ALL GROUPS IN CURRENT DOLLARS</b>													
<b>250</b>	<b>227</b>	245	245	244	236	235	234	228	219	214	210	208	209
<b>PRICE INDEX - ALL GROUPS IN SDR'S</b>													
<b>216</b>	<b>206</b>	210	210	212	208	209	211	207	203	200	200	199	197



Source: UNCTAD, UNCTADstat Commodity Price Statistics



**MONTHLY AVERAGE PRICES**

**1 - FOOD, TROPICAL BEVERAGES AND VEGETABLE OILSEEDS AND OILS**

Moving averages		Jun 14	Jul 14	Aug 14	Sep 14	Oct 14	Nov 14	Dec 14	Jan 15	Feb 15	Mar 15	Apr 15	May 15
Jun 13 to May 14	Jun 14 to May 15												
<b>WHEAT 1</b>		ARGENTINA, TRIGO PAN UP RIVER, FOB										US DOLLARS / TONNE	
<b>328</b>	<b>255</b>	364	264	268	237	239	255	251	253	241	229	227	227
<b>WHEAT 2</b>		US, NO. 2, HARD RED WINTER (ORDINARY), FOB GULF										US DOLLARS / TONNE	
<b>318</b>	<b>272</b>	316	294	285	274	286	282	289	261	250	249	244	233
<b>MAIZE 1</b>		ARGENTINA, ROSARIO (UP RIVER), FOB										US DOLLARS / TONNE	
<b>223</b>	<b>180</b>	204.0	192.0	180.3	165.0	169.0	182.0	199.0	185.0	178.0	169.0	168.0	169.0
<b>MAIZE 2</b>		US, NO. 3 YELLOW, FOB GULF										US DOLLARS / TONNE	
<b>233</b>	<b>186.1</b>	212.0	197.0	194.3	180.0	183.0	192.0	189.0	181.0	180.0	177.0	177.0	171.0
<b>RICE</b>		THAILAND, WHITE 5% BROKEN, FOB BANGKOK										US DOLLARS / TONNE	
<b>462</b>	<b>415</b>	415	428	440	437	433	419	411	410	410	401	392	382
<b>SUGAR</b>		AVERAGE OF I.S.A. DAILY PRICES, FOB & STOWED CARIBBEAN PORTS										US CENTS / LB.	
<b>17.27</b>	<b>15.62</b>	18.17	18.26	17.22	16.02	16.75	16.19	15.33	15.34	14.59	13.16	13.08	13.34
<b>BEEF</b>		AUSTRALIA/NEW ZEALAND, US IMPORT PRICE, FOB ENTRY PORT										US CENTS / LB.	
<b>184.3</b>	<b>232.6</b>	200.8	227.5	258.9	272.3	266.9	261.5	239.6	232.0	209.9	207.8	214.4	199.2
<b>BANANAS</b>		CENTRAL AMERICA/ECUADOR, US IMPORTER'S PRICE, FOB US PORTS										US CENTS / LB.	
<b>42.34</b>	<b>43.13</b>	42.01	42.22	43.62	41.98	41.84	41.04	41.19	41.35	43.86	47.44	48.04	42.95
<b>PEPPER</b>		INDONESIA, MUNTOK, WHITE FAQ EXW ROTTERDAM										US DOLLARS / TONNE	
<b>10699</b>	<b>13612</b>	12000	12404	13555	13673	13613	13700	13967	14400	13748	13927	13600	14753
<b>SOYBEAN MEAL</b>		44/45% PROTEIN, FOB EX-MILL HAMBURG										US DOLLARS / TONNE	
<b>556</b>	<b>441</b>	531	477	485	456	440	460	453	431	412	392	380	371
<b>FISH MEAL</b>		ANY ORIGIN, 64/65% PROTEIN, FREE CARRIER PRICE, BREMEN										US DOLLARS / TONNE	
<b>1646</b>	<b>1731</b>	1765	1806	1773	1723	1770	1836	1890	1790	1717	1638	1539	1525
<b>COFFEE 1</b>		COLOMBIAN MILD ARABICAS, EX-DOCK USA (I.C.A.)										US CENTS / LB.	
<b>159.4</b>	<b>185.7</b>	196.14	194.91	210.42	202.77	219.27	203.71	191.53	182.32	171.68	151.94	155.30	148.45
<b>COFFEE 2</b>		BRAZILIAN AND OTHER NATURAL ARABICAS, EX-DOCK USA (I.C.A.)										US CENTS / LB.	
<b>127.7</b>	<b>152.9</b>	154.02	154.00	171.99	168.11	181.58	169.10	157.87	151.21	143.32	127.81	131.63	124.60
<b>COFFEE 3</b>		OTHER MILD ARABICAS, EX-DOCK USA (I.C.A.)										US CENTS / LB.	
<b>157.8</b>	<b>193.2</b>	198.91	198.59	214.50	212.01	227.06	212.93	200.59	190.90	179.94	160.02	164.95	158.45
<b>COFFEE 4</b>		OTHER MILD ARABICAS, EX-DOCK EU (I.C.A.)										US CENTS / LB.	
<b>155.8</b>	<b>190.7</b>	197.60	195.87	212.02	209.22	224.20	207.27	191.70	189.75	177.98	161.18	163.41	158.49
<b>COFFEE 5</b>		ROBUSTAS, EX-DOCK USA (I.C.A.)										US CENTS / LB.	
<b>99.14</b>	<b>103.3</b>	104.63	107.23	105.07	105.57	109.39	106.81	103.51	102.33	103.74	98.07	98.73	94.35
<b>COFFEE 6</b>		ROBUSTAS, EX-DOCK EU (I.C.A.)										US CENTS / LB.	
<b>91.89</b>	<b>97</b>	98.00	100.74	99.34	99.53	103.80	102.33	97.76	97.21	97.28	91.04	90.79	86.17
<b>COFFEE 7</b>		COMPOSITE INDICATOR PRICE 1976 VERSION										US CENTS / LB.	
<b>128.5</b>	<b>148.3</b>	151.77	152.91	159.79	158.79	168.23	159.87	152.05	146.62	141.84	129.05	131.84	126.40

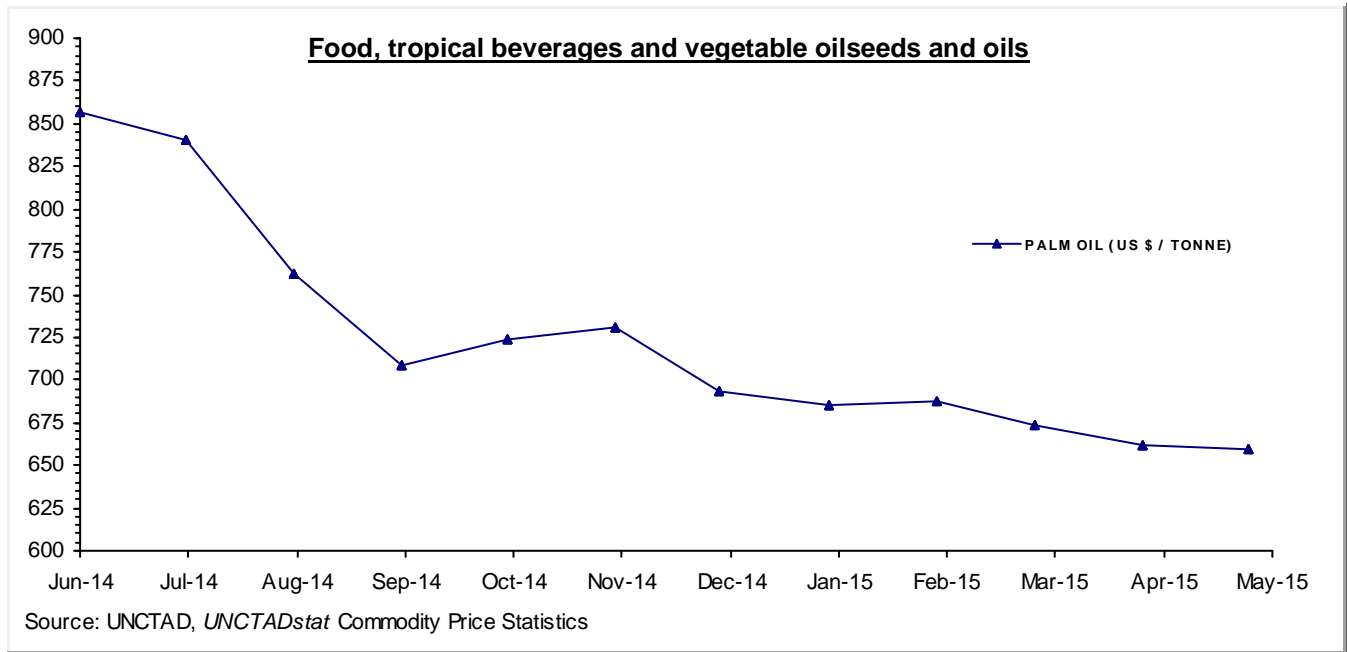
**MONTHLY AVERAGE PRICES**

**1 - FOOD, TROPICAL BEVERAGES AND VEGETABLE OILSEEDS AND OILS**

Moving averages		Jun 14	Jul 14	Aug 14	Sep 14	Oct 14	Nov 14	Dec 14	Jan 15	Feb 15	Mar 15	Apr 15	May 15
Jun 13 to May 14	Jun 14 to May 15												
<b>COFFEE 8</b>		ICO COMPOSITE INDICATOR PRICE											US CENTS / LB.
<b>127.3</b>	<b>148.7</b>	151.92	152.50	163.08	161.79	172.88	162.17	150.66	148.24	141.10	127.04	129.02	123.49
<b>COCOA</b>		AVERAGE OF DAILY PRICES, NEW YORK/LONDON, 3 MONTHS FUTURES											US CENTS / LB.
<b>112.7</b>	<b>138.1</b>	143.99	144.97	148.34	146.10	140.65	131.96	134.16	132.50	133.67	130.74	130.10	140.43
<b>COCOA SDR</b>		AS ABOVE											SDRs / TONNE
<b>1634</b>	<b>2085</b>	2059.73	2073.37	2142.71	2147.39	2086.22	1983.45	2030.76	2053.67	2086.24	2080.68	2073.02	2204.41
<b>TEA</b>		KENYA, BEST PEKOE FANNINGS 1, MOMBASA AUCTION PRICE											US CENTS / KG.
<b>239.8</b>	<b>262.1</b>	223.7	232.4	235.8	233.0	256.2	243.3	243.3	269.6	296.4	307.6	290.7	313.8
<b>SOYBEANS</b>		US, NO. 2 YELLOW, CIF ROTTERDAM											US DOLLARS / TONNE
<b>539</b>	<b>436</b>	516	480	460	432	425	449	446	423	407	404	395	389
<b>SOYBEAN OIL</b>		DUTCH, FOB EX-MILL											US DOLLARS / TONNE
<b>994</b>	<b>822</b>	936	888	857	851	836	830	820	799	772	747	749	781
<b>SUNFLOWER OIL</b>		EU, FOB, N.W. EUROPEAN PORTS											US DOLLARS / TONNE
<b>1001</b>	<b>858</b>	928	887	828	823	874	892	877	837	803	801	838	904
<b>GROUNDNUT OIL</b>		ANY ORIGIN, CIF ROTTERDAM											US DOLLARS / TONNE
<b>1484</b>	<b>1354</b>	1310	1325	1350	1360	1365	1368	1370	1391	1366	1356	1348	1345
<b>COPRA</b>		PHILIPPINES/INDONESIA, CIF N.W. EUROPEAN PORTS											US DOLLARS / TONNE
<b>776</b>	<b>789</b>	934	861	770	785	769	795	813	764	794	721	714	748
<b>COCONUT OIL</b>		PHILIPPINES/INDONESIA, CIF ROTTERDAM											US DOLLARS / TONNE
<b>1163</b>	<b>1186</b>	1402	1260	1172	1181	1150	1194	1217	1155	1188	1096	1080	1133
<b>PALM KERNEL OIL</b>		MALAYSIA/INDONESIA, CIF ROTTERDAM											US DOLLARS / TONNE
<b>1086</b>	<b>1014</b>	1234	1116	943	904	939	971	968	1019	1077	1043	985	966
<b>PALM OIL</b>		INDONESIA/MALAYSIA, 5% FFA, CIF N.W. EUROPEAN PORTS											US DOLLARS / TONNE
<b>881</b>	<b>724</b>	857	841	762	709	724	731	693	685	688	674	662	659
<b>COTTONSEED OIL</b>		UNITED STATES, CRUDE, FOB MISSISSIPPI VALLEY											US DOLLARS / TONNE
<b>1224</b>	<b>1157</b>	1780	1576	1222	1180	1032	904	926	1023	1058	1071	1044	1071

**MONTHLY AVERAGE PRICES**

**1 - FOOD, TROPICAL BEVERAGES AND VEGETABLE OILSEEDS AND OILS**



**MONTHLY AVERAGE PRICES**

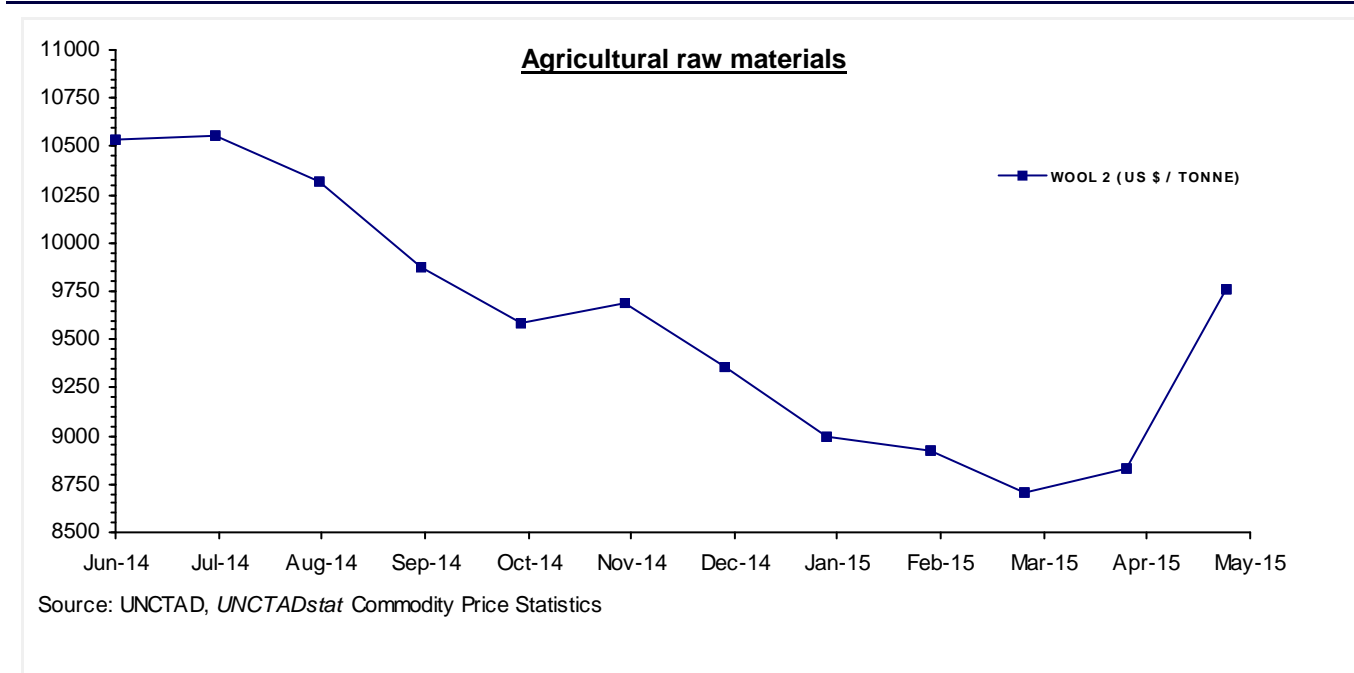
**2 - AGRICULTURAL RAW MATERIALS**

Moving averages		Jun 14	Jul 14	Aug 14	Sep 14	Oct 14	Nov 14	Dec 14	Jan 15	Feb 15	Mar 15	Apr 15	May 15
Jun 13 to May 14	Jun 14 to May 15												
<b>LINSEED OIL</b>		ANY ORIGIN, EX-TANK, ROTTERDAM										US DOLLARS / TONNE	
<b>1191</b>	<b>1192</b>	1239	1243	1184	1114	1183	1315	1320	1198	1158	1115	1123	1116
<b>TOBACCO</b>		UNMANUFACTURED, US IMPORT UNIT VALUE										US DOLLARS / TONNE	
<b>4853</b>	<b>4949</b>	4996	4991	4920	4924	4943	4922	4926	4923	4911	4962	4987r	4987e
<b>COTTON 2</b>		SUDAN, BARAKAT, X4B, CFR FAR EASTERN										US CENTS / LB.	
<b>107</b>		..	..	..	..	..	..	..	..	..	..	..	..
<b>COTTON 3</b>		US, MEMPHIS EASTERN, MIDD. 1-3/32", CFR FAR EASTERN										US CENTS / LB.	
<b>95.16</b>	<b>76.33</b>	95.31	87.05	76.06	75.19	73.85	71.44	71.25	69.63	73.63	72.88	74.85	74.81
<b>COTTON 4</b>		US, MEMPHIS/ORLEANS/TEXAS, MIDD.1", CFR FAR EASTERN										US CENTS / LB.	
<b>94.77</b>	<b>75.8</b>	94.81	86.55	75.81	74.94	73.40	70.69	70.50	68.94	73.13	72.13	74.20	74.50
<b>COTTON 6</b>		INDEX A (M 1-3/32"), COTTON OUTLOOK, LIVERPOOL										US CENTS / LB.	
<b>91.56</b>	<b>72.68</b>	90.90	76.59	74.00	73.38	70.34	67.53	68.30	67.35	69.84	69.35	71.70	72.86
<b>COTTON 8</b>		EGYPT, GIZA 88 GOOD+3/8, CFR FAR EASTERN										US CENTS / LB.	
<b>163</b>		..	..	..	..	..	..	..	..	..	..	..	..
<b>WOOL 1</b>		AUSTRALIAN FINE WOOL 19 MICRON										US DOLLARS / TONNE	
<b>11205</b>	<b>10259</b>	10731.7	10781.5	10697.5	10565.0	10440.1	10419.7	10021.3	9670.3	9469.1	9294.5	9867.6	11145.8
<b>WOOL 2</b>		AUSTRALIAN COARSE WOOL 23 MICRON										US DOLLARS / TONNE	
<b>10865</b>	<b>9595</b>	10538.2	10551.2	10313.1	9876.8	9589.3	9684.3	9356.2	8993.9	8924.4	8711.6	8831.4	9763.4
<b>JUTE</b>		BANGLADESH, BWD, FOB MONGLA										US DOLLARS / TONNE	
<b>605</b>	<b>690</b>	610	620	600	650	720	700	710	730	760	750	720	710
<b>SISAL 1</b>		TANZANIA/KENYA, NO.2 & 3 LONG, CIF MAIN EUROPEAN PORTS										US DOLLARS / TONNE	
<b>1532</b>	<b>1880</b>	1650	1745	1770	1800	1850	1880	1905	1935	1950	1975	2050	2050
<b>SISAL 2</b>		TANZANIA/KENYA, NO.3 & UG, CIF MAIN EUROPEAN PORTS										US DOLLARS / TONNE	
<b>1423</b>	<b>1776</b>	1550	1645	1670	1700	1750	1780	1805	1835	1850	1875	1925	1925
<b>CATTLE HIDES</b>		CHICAGO, PACKER'S HEAVY NATIVE STEERS, FOB										US CENTS / LB.	
<b>104</b>	<b>108</b>	108	108	111	115	114	115	109	107	106	105	100	96
<b>NON-CONIFEROUS WOODS</b>		UK, IMPORT PRICE INDEX (DOLLAR EQUIVALENT)										INDEX 2010=100	
<b>101.8</b>	<b>99.6</b>	104.0	103.9	103.4	102.7	102.8	101.4	100.9	98.2	96.7	95.6	93.6	91.5
<b>TROPICAL LOGS 1</b>		SAPELE, LM, FOB UK IMPORT PRICE										US DOLLARS / CUBIC METER	
<b>473.9</b>	<b>427.6</b>	475.7	474.0	466.1	451.8	443.5	436.6	431.2	407.6	397.5	379.2	377.8	390.8
<b>TROPICAL LOGS 2</b>		OKOUME (60% CI, 40% CE, 20% CS), FOB										US DOLLARS / CUBIC METER	
<b>412.4</b>	<b>388.9</b>	462.3	460.2	452.7	438.5	431.0	424.1	418.6	380.8	363.2	308.1	259.5	267.8
<b>TROPICAL SAWNWOOD</b>		MALAYSIA, DARK RED MERANTI, SEL/BTR, CFR PLUS COMMISSION UK										£ / CUBIC METER	
<b>545.3</b>	<b>544.9</b>	545.0	545.0	545.0	545.0	545.0	545.0	545.0	545.0	545.0	545.0	544.2	545.1
<b>PLYWOOD</b>		AFRICA/SOUTHEAST ASIA, LAUAN, WHOLESALE PRICE, SPOT TOKYO										US CENTS / SHEET	
<b>542.7</b>	<b>485.7</b>	535.08	536.87	530.41	509.09	505.60	469.80	457.45	461.30	460.18	453.60	456.80	452.10

## MONTHLY AVERAGE PRICES

### 2 - AGRICULTURAL RAW MATERIALS

Moving averages		Jun 14	Jul 14	Aug 14	Sep 14	Oct 14	Nov 14	Dec 14	Jan 15	Feb 15	Mar 15	Apr 15	May 15
Jun 13 to May 14	Jun 14 to May 15												
<b>PLYWOOD CM</b>		AS ABOVE										US DOLLARS / CUBIC METER	
<b>819.2</b>	<b>733.1</b>	807.69	810.39	800.64	768.46	763.19	709.15	690.51	696.32	694.63	684.70	689.53	682.44
<b>RUBBER 1</b>		RSS 3, MONTHLY AVERAGE OF WEIGHTED DAILY FUTURE PRICES										US CENTS / KG	
<b>243.2</b>	<b>176.7</b>	208.7	201.9	185.0	164.4	162.0	163.7	160.3	165.4	180.8	173.5	170.0	184.2
<b>RUBBER 2</b>		TSR20 NEW YORK CIF										US DOLLARS / TONNE	
<b>2380</b>	<b>1781</b>	1964.70	1945.70	1904.10	1794.10	1765.60	1790.00	1734.00	1697.30	1686.80	1663.50	1643.90	1776.80



**MONTHLY AVERAGE PRICES**

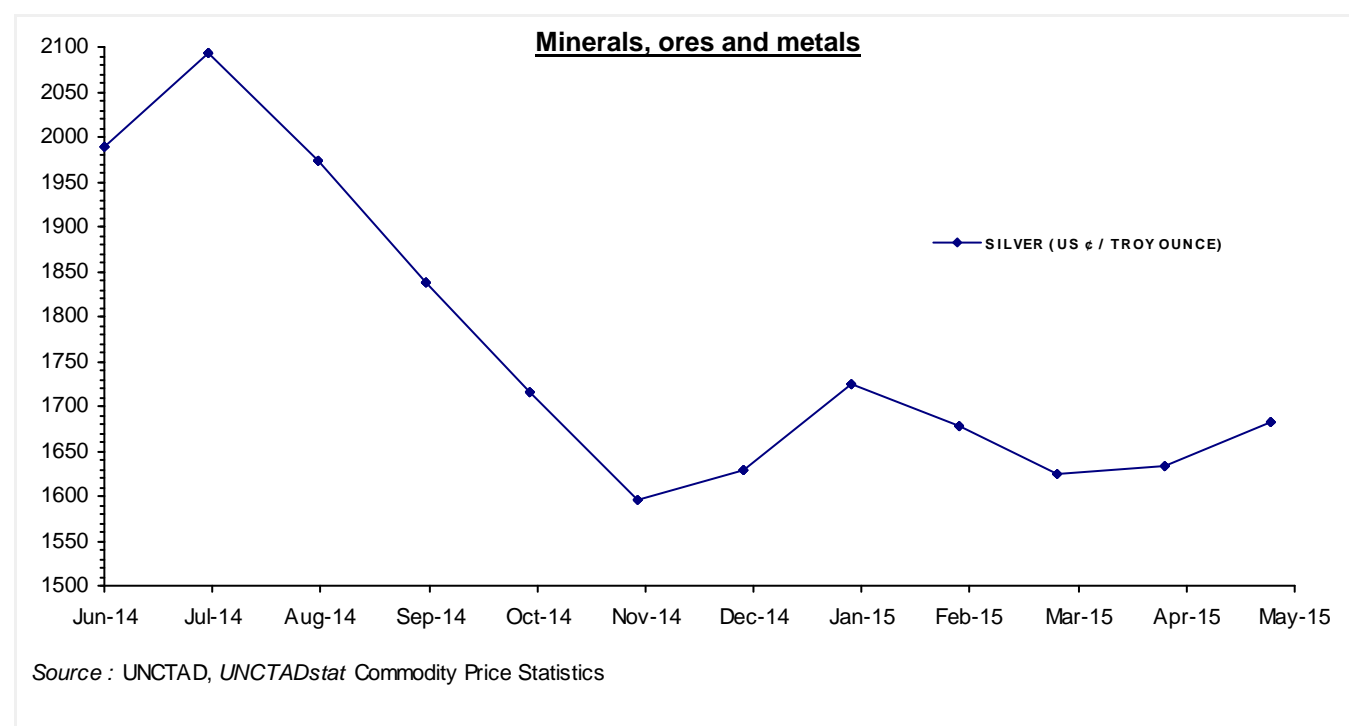
**3 - MINERALS, ORES AND METALS**

Moving averages		Jun 14	Jul 14	Aug 14	Sep 14	Oct 14	Nov 14	Dec 14	Jan 15	Feb 15	Mar 15	Apr 15	May 15
Jun 13 to May 14	Jun 14 to May 15												
<b>PHOSPHATE ROCK</b>		K HOURIBGA, 70% BPL, CONTRACT, FAS CASABLANCA										US DOLLARS / TONNE	
<b>121.5</b>	<b>113.8</b>	110.00	110.00	110.00	115.00	115.00	115.00	115.00	115.00	115.00	115.00	115.00	115.00
<b>MANGANESE ORE INDEX</b>		44% MN, CIF TIANJIN										US DOLLARS / TONNE	
<b>507</b>	<b>398</b>	423	427	431	437	440	435	433	417	376	352	309	302
<b>MANGANESE FLAKE</b>		99.7% ELECTROLYTIC, FREE MARKET, IN WAREHOUSE										US DOLLARS / TONNE	
<b>2229</b>	<b>2153</b>	2180	2202	2333	2378	2327	2276	2137	2113	2068	2045	1989	1788
<b>IRON ORE 1</b>		62% Fe, CHINA IMPORT, SPOT (CFR TIANJIN PORT)										US DOLLARS / DRY TONNE	
<b>124.5</b>	<b>73.95</b>	92.74	96.05	92.61	82.37	80.39	73.59	69.26	67.84	62.81	57.10	51.80	60.82
<b>IRON ORE 2</b>		62% Fe, OFFSHORE EXPORT PRICE AUSTRALIA TO CHINA, CIF										US DOLLARS / DRY TONNE	
<b>125.4</b>	<b>74.11</b>	93.00	96.00	93.00	83.00	81.00	74.00	68.00	68.00	63.00	58.00	52.05	60.21
<b>IRON ORE 3</b>		65% Fe, OFFSHORE EXPORT PRICE BRAZIL TO CHINA, CIF										US DOLLARS / DRY TONNE	
<b>134.8</b>	<b>81.66</b>	100.00	104.00	101.00	92.00	89.00	83.00	76.00	77.00	70.00	64.00	57.30	66.67
<b>ALUMINIUM</b>		LONDON METAL EXCHANGE, HIGH GRADE, CASH										US DOLLARS / TONNE	
<b>1762</b>	<b>1894</b>	1834.2	1945.1	2029.9	1992.1	1937.0	2053.6	1912.9	1808.1	1820.4	1772.3	1816.8	1804.8
<b>COPPER 1</b>		LONDON METAL EXCHANGE, GRADE A, CASH										STERLING POUNDS / TONNE	
<b>4359</b>	<b>4063</b>	4026.3	4161.4	4190.1	4214.1	4193.7	4247.6	4105.7	3838.2	3719.9	3957.8	4032.2	4073.9
<b>COPPER 1 \$</b>		AS ABOVE										US DOLLARS / TONNE	
<b>7031</b>	<b>6452</b>	6806.5	7105.6	6998.7	6874.0	6738.9	6701.9	6419.7	5822.2	5700.7	5930.0	6032.6	6295.8
<b>COPPER 2</b>		US PRODUCER/REFINERY, WIRE BARS, FOB										US CENTS / LB.	
<b>327.2</b>	<b>298.2</b>	316.3	328.9	321.3	314.7	309.1	306.8	294.8	270.8r	265.5e	276.0e	280.7e	293.4e
<b>NICKEL 1</b>		LONDON METAL EXCHANGE, CASH										US DOLLARS / TONNE	
<b>14871</b>	<b>15914</b>	18568.2	19046.7	18572.4	18075.8	15765.3	15702.4	15914.3	14766.9	14531.1	13742.2	12779.8	13505.0
<b>NICKEL 2</b>		NEW YORK DEALER, 4X4 CATHODES, ESTIMATED MARKET PRICE										US CENTS / LB.	
<b>688.6</b>	<b>728</b>	849.4e	871.3e	849.6e	826.9e	721.2e	718.3e	728.0e	675.5e	664.7e	628.6e	584.6e	617.8e
<b>LEAD 1</b>		LONDON METAL EXCHANGE, CASH SETTLEMENT										STERLING POUNDS / TONNE	
<b>1304</b>	<b>1264</b>	1244.2	1282.4	1338.7	1301.3	1268.2	1282.8	1237.5	1207.3	1177.6	1192.1	1337.2	1296.0
<b>LEAD 1 \$</b>		AS ABOVE										US DOLLARS / TONNE	
<b>2104</b>	<b>2006</b>	2103.4	2189.7	2236.1	2122.7	2037.9	2024.0	1935.0	1831.4	1804.7	1786.2	2000.6	2002.9
<b>LEAD 2</b>		NORTH AMERICA, PRODUCER PRICE										US CENTS / LB.	
<b>115.9</b>	<b>111.6</b>	117.1e	121.8e	124.5e	118.1e	113.4e	112.6e	107.8e	101.8e	100.4e	99.4e	111.3e	111.5e
<b>ZINC 1</b>		LONDON METAL EXCHANGE, SPECIAL HIGH GRADE, CASH SETTLEMENT										US DOLLARS / TONNE	
<b>1943</b>	<b>2208</b>	2126.5	2310.7	2328.9	2293.7	2272.4	2259.1	2171.4	2110.3	2102.7	2028.6	2206.5	2289.1
<b>ZINC 2</b>		NORTH AMERICA, SPECIAL HIGH GRADE										US CENTS / LB.	
<b>97.2</b>	<b>109</b>	105.5	113.8	114.7	113.1	112.0	111.2	107.3	104.4	103.9	100.3e	109.0e	113.1e
<b>TIN 1</b>		LONDON METAL EXCHANGE, CASH										US DOLLARS / TONNE	
<b>22306</b>	<b>19601</b>	22768	22374	22283	21115	19903	19962	19820	19453	18284	17454	15979	15819

## MONTHLY AVERAGE PRICES

### 3 - MINERALS, ORES AND METALS

Moving averages		Jun 14	Jul 14	Aug 14	Sep 14	Oct 14	Nov 14	Dec 14	Jan 15	Feb 15	Mar 15	Apr 15	May 15
Jun 13 to May 14	Jun 14 to May 15												
<b>TIN 2</b>		KUALA LUMPUR TIN MARKET, EX-SMELTER										MALAYSIAN DOLLARS / KG.	
<b>71.86</b>	<b>66.67</b>	73.52	71.53	71.01	68.19	65.10	66.69	68.71	69.64	65.75	64.40	58.34	57.13
<b>TIN 2 \$</b>		AS ABOVE										US DOLLARS / TONNE	
<b>22174</b>	<b>19628</b>	22833.0	22466.9	22339.3	21186.9	19901.6	19919.4	19747.1	19444.4	18276.1	17494.3	16053.1	15873.9
<b>TUNGSTEN APT</b>		EUROPEAN FREE MARKET										US DOLLARS / MTU	
<b>384.6</b>	<b>315.2</b>	376.00	369.44	362.78	353.75	344.25	326.88	306.83	291.94	281.00	271.81	254.17	243.06
<b>FERRO-TUNGSTEN</b>		BASIS 75% W, ROTTERDAM, DUTY UNPAID, IN WAREHOUSE										US DOLLARS / KG	
<b>46.62</b>	<b>36.99</b>	42.70	42.19	40.46	40.50	38.93	36.48	34.83	34.25	32.93	33.65	34.31	32.69
<b>GOLD</b>		LONDON, 99.5% FINE, AFTERNOON FIXING										US DOLLARS / TROY OUNCE	
<b>1301</b>	<b>1232</b>	1279.10	1310.97	1295.99	1238.82	1222.49	1176.30	1202.29	1251.85	1227.19	1178.63	1197.91	1199.05
<b>SILVER</b>		HANDY & HARMAN, 99.9% GRADE REFINED, NEW YORK										US CENTS / TROY OUNCE	
<b>2070</b>	<b>1765</b>	1989.24	2092.25	1973.56	1836.88	1716.33	1596.61	1629.48	1723.55	1678.71	1624.00	1634.10	1683.28
<b>CRUDE PETROLEUM 1</b>		UK BRENT, DUBAI & WTI AVERAGE, EQUALLY WEIGHTED, SPOT, FOB										US DOLLARS / BARREL	
<b>104.8</b>	<b>75.69</b>	108.37	105.22	100.05	95.89	86.13	76.96	60.55	47.45	54.93	52.83	57.42	62.50
<b>CRUDE PETROLEUM 2</b>		UK BRENT, LIGHT BLEND 38° API, SPOT PRICE, FOB UK PORTS										US DOLLARS / BARREL	
<b>108.6</b>	<b>77.67</b>	111.87	106.98	101.92	97.34	87.27	78.44	62.16	48.42	57.93	55.79	59.39	64.56
<b>CRUDE PETROLEUM 3</b>		DUBAI, MEDIUM, FATEH 32° API, SPOT PRICE, FOB DUBAI										US DOLLARS / BARREL	
<b>105.2</b>	<b>76.35</b>	108.01	105.71	101.85	96.99	86.72	76.73	60.39	46.34	56.15	54.91	58.67	63.67





## SOURCES AND NOTES

### Sources:

Bloomberg Terminal Services  
*Cotton Outlook*, Liverpool, UK  
Food and Agricultural Organization (FAO), Italy  
International Cocoa Organization (ICCO), London, UK  
International Coffee Organization (ICO), London, UK  
International Grains Council (IGC), London, UK  
International Monetary Fund (IMF), Washington D.C., USA  
International Rubber Study Group (IRSG), Singapore  
International Sugar Organization, London, UK  
International Tropical Timber Organization (ITTO), Yokohama, Japan  
*Metal Bulletin*, London, UK  
*Oil World*, Hamburg, Germany  
*PLATTS*, New York, USA  
Singapore Commodity Exchange Ltd (SICOM), Singapore  
*The Public Ledger*, London, UK  
Thomson Reuters, *Datastream*  
United States Department of Agriculture (USDA), Foreign Agriculture Service (FAS)  
United States Geological Survey, Commodity Statistics and Information  
World Bank, Washington D.C., USA

### Explanation of symbols:

- " e " estimated figure
- " r " revised figure
- " .. " not available including no quotation
- " // " break in the series

The current and previous editions of the *Commodity Price Bulletin* are available in the Publications section of the Statistics portal of UNCTAD at <http://www.unctad.org>.

The long time series of annual and monthly commodity prices and prices indices are available in UNCTADstat at <http://unctadstat.unctad.org> as well as in the *Handbook of Statistics* DVD.

If you have any questions or comments concerning commodity price data, please do not hesitate to contact us:

E-mail: [statistics@unctad.org](mailto:statistics@unctad.org)