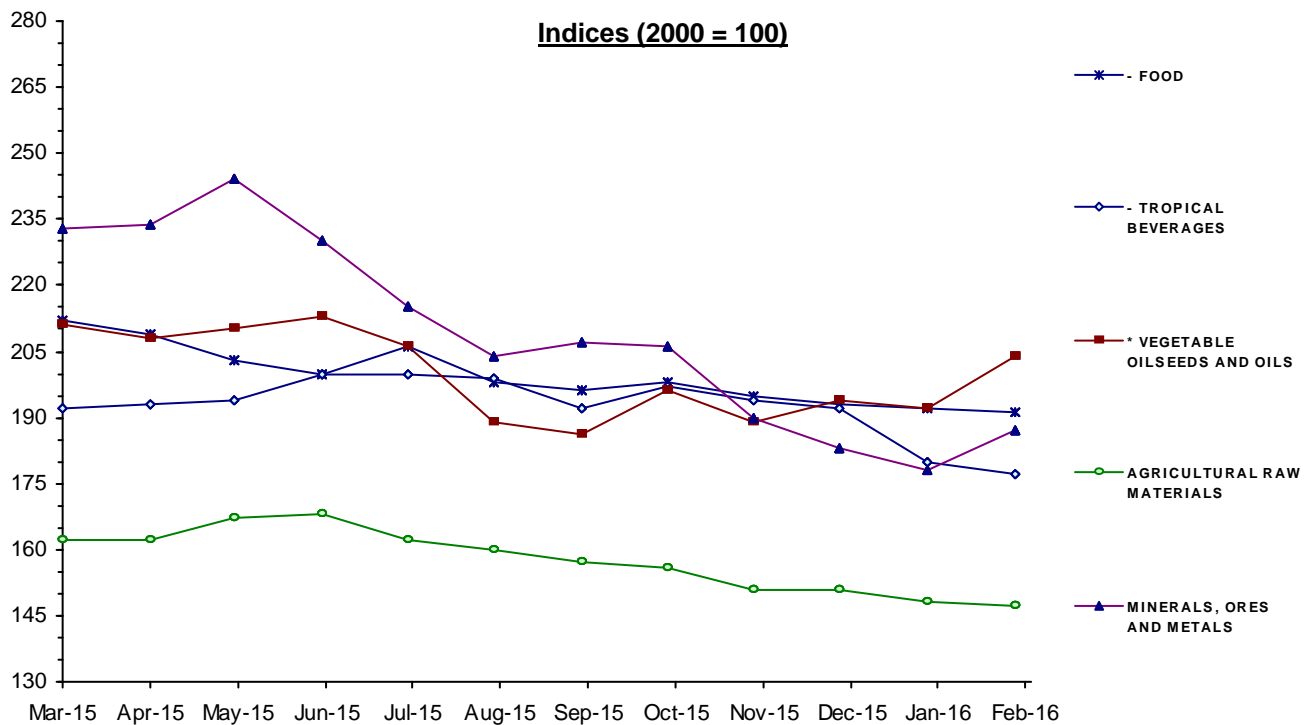


MONTHLY INDICES OF FREE MARKET PRICES IN US DOLLARS

2000 = 100

Moving averages		Mar 15	Apr 15	May 15	Jun 15	Jul 15	Aug 15	Sep 15	Oct 15	Nov 15	Dec 15	Jan 16	Feb 16
Mar 14 to Feb 15	Mar 15 to Feb 16												
ALL FOOD													
236	199	210	208	203	201	205	197	195	198	194	193	191	191
* TROPICAL BEVERAGES AND FOOD													
235	199	210	207	202	200	205	198	196	198	195	193	191	190
- TROPICAL BEVERAGES													
218	192	192	193	194	200	200	199	192	197	194	192	180	177
- FOOD													
237	199	212	209	203	200	206	198	196	198	195	193	192	191
* VEGETABLE OILSEEDS AND OILS													
243	200	211	208	210	213	206	189	186	196	189	194	192	204
AGRICULTURAL RAW MATERIALS													
180	158	162	162	167	168	162	160	157	156	151	151	148	147
MINERALS, ORES AND METALS													
270	209	233	234	244	230	215	204	207	206	190	183	178	187
PRICE INDEX - ALL GROUPS IN CURRENT DOLLARS													
238	196	210	208	209	204	202	194	193	194	187	185	182	184
PRICE INDEX - ALL GROUPS IN SDR'S													
209	186	200	199	197	192	191	183	181	183	179	176	174	175



Source: UNCTAD, UNCTADstat Commodity Price Statistics



MONTHLY AVERAGE PRICES

1 - FOOD, TROPICAL BEVERAGES AND VEGETABLE OILSEEDS AND OILS

Moving averages		Mar 15	Apr 15	May 15	Jun 15	Jul 15	Aug 15	Sep 15	Oct 15	Nov 15	Dec 15	Jan 16	Feb 16
Mar 14 to Feb 15	Mar 15 to Feb 16												
WHEAT 1		ARGENTINA, TRIGO PAN UP RIVER, FOB										US DOLLARS / TONNE	
287	216	229	227	227	226	230	226	223	223	206	191	194	194
WHEAT 2		US, NO. 2, HARD RED WINTER (ORDINARY), FOB GULF										US DOLLARS / TONNE	
296	225	249	244	233	238	236	216	219	218	211	214	213	204
MAIZE 1		ARGENTINA, ROSARIO (UP RIVER), FOB										US DOLLARS / TONNE	
194.2	166.3	169.0	168.0	169.0	170.0	176.0	159.0	161.0	163.0	167.0	165.0	162.0	167.0
MAIZE 2		US, NO. 3 YELLOW, FOB GULF										US DOLLARS / TONNE	
199.7	173.3	177.0	177.0	171.0	173.0	185.0	167.0	175.0	179.0	170.0	170.0	169.0	166.0
RICE		THAILAND, WHITE 5% BROKEN, FOB BANGKOK										US DOLLARS / TONNE	
421	373	401	392	382	371	388	376	359	360	358	354	359	373
SUGAR		AVERAGE OF I.S.A. DAILY PRICES, FOB & STOWED CARIBBEAN PORTS										US CENTS / LB.	
16.8	13.22	13.16	13.08	13.34	12.46	12.77	11.50	11.86	13.91	14.55	14.64	14.05	13.28
BEEF		AUSTRALIA/NEW ZEALAND, US IMPORT PRICE, FOB ENTRY PORT										US CENTS / LB.	
229.4	191.2	207.8	214.4	199.2	195.1	204.4	212.0	202.4	184.6	177.1	167.1	159.1r	171.3
BANANAS		CENTRAL AMERICA/ECUADOR, US IMPORTER'S PRICE, FOB US PORTS										US CENTS / LB.	
42.28	44.28	47.44	48.04	42.95	42.15	42.56	43.39	43.17	42.35	42.29	42.29	47.06	47.73
PEPPER		INDONESIA, MUNTOK, WHITE FAQ EXW ROTTERDAM										US DOLLARS / TONNE	
13108	14251	13927	13600	14753	14682	15500	15255	14800	14336	14200	14200	12760	13000
SOYBEAN MEAL		44/45% PROTEIN, FOB EX-MILL HAMBURG										US DOLLARS / TONNE	
486	354	392	380	371	372	389	373	362	351	328	317	316	303
FISH MEAL		ANY ORIGIN, 64/65% PROTEIN, FREE CARRIER PRICE, BREMEN										US DOLLARS / TONNE	
1753	1512	1638	1539	1525	1506	1466	1469	1480	1531	1537	1503	1476	1472
COFFEE 1		COLOMBIAN MILD ARABICAS, EX-DOCK USA (I.C.A.)										US CENTS / LB.	
202	143.1	151.94	155.30	148.45	150.58	142.24	144.96	133.03	140.28	137.49	140.23	134.93	137.71
COFFEE 2		BRAZILIAN AND OTHER NATURAL ARABICAS, EX-DOCK USA (I.C.A.)										US CENTS / LB.	
165	116.4	127.81	131.63	124.60	120.85	111.92	118.39	109.53	116.83	110.70	110.38	106.46	108.21
COFFEE 3		OTHER MILD ARABICAS, EX-DOCK USA (I.C.A.)										US CENTS / LB.	
207.8	154.2	160.02	164.95	158.45	159.77	153.29	158.78	147.65	153.88	148.94	149.82	146.32	148.94
COFFEE 4		OTHER MILD ARABICAS, EX-DOCK EU (I.C.A.)										US CENTS / LB.	
204.4	153.2	161.18	163.41	158.49	159.75	155.12	155.79	145.16	152.81	147.10	147.88	144.20	146.85
COFFEE 5		ROBUSTAS, EX-DOCK USA (I.C.A.)										US CENTS / LB.	
106.6	90.62	98.07	98.73	94.35	96.89	92.71	91.94	88.00	88.67	88.63	86.35	81.96	81.16
COFFEE 6		ROBUSTAS, EX-DOCK EU (I.C.A.)										US CENTS / LB.	
100.5	82.79	91.04	90.79	86.17	88.98	86.03	84.60	80.31	81.57	80.39	77.82	73.24	72.57
COFFEE 7		COMPOSITE INDICATOR PRICE 1976 VERSION										US CENTS / LB.	
157.2	122.4	129.05	131.84	126.40	128.33	123.00	125.36	117.83	121.28	118.78	118.08	114.14	115.05

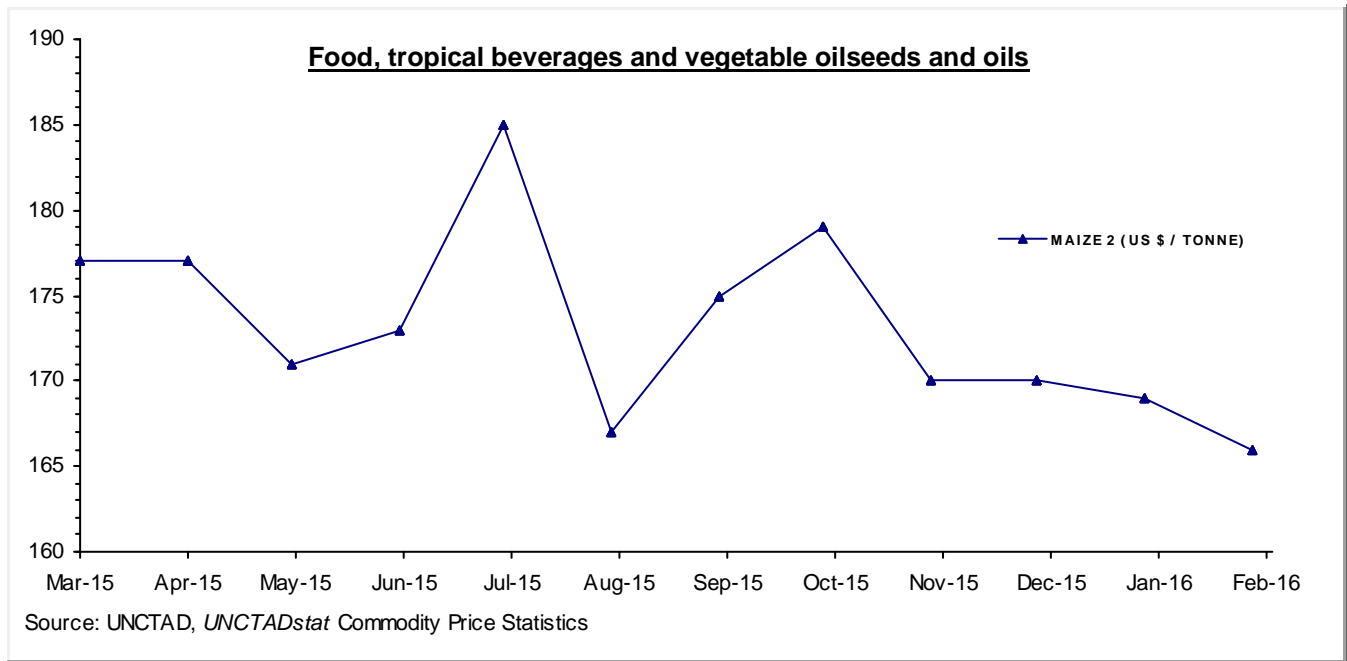
MONTHLY AVERAGE PRICES

1 - FOOD, TROPICAL BEVERAGES AND VEGETABLE OILSEEDS AND OILS

Moving averages		Mar 15	Apr 15	May 15	Jun 15	Jul 15	Aug 15	Sep 15	Oct 15	Nov 15	Dec 15	Jan 16	Feb 16
Mar 14 to Feb 15	Mar 15 to Feb 16												
COFFEE 8		ICO COMPOSITE INDICATOR PRICE											US CENTS / LB.
158.7	119.1	127.04	129.02	123.49	124.97	119.77	121.21	113.10	118.43	115.03	114.63	110.89	111.75
COCOA		AVERAGE OF DAILY PRICES, NEW YORK/LONDON, 3 MONTHS FUTURES											US CENTS / LB.
112.7	142.2	130.74	130.10	140.43	146.92	150.87	143.02	148.71	145.07	152.45	151.76	133.92	132.29
COCOA SDR		AS ABOVE											SDRs / TONNE
1634	2248	2080.68	2073.02	2204.41	2305.68	2382.30	2249.75	2331.62	2274.31	2432.82	2414.60	2136.37	2092.75
TEA		KENYA, BEST PEKOE FANNINGS 1, MOMBASA AUCTION PRICE											US CENTS / KG.
242.9	343.8	307.6	290.7	313.8	355.9	403.0	387.3	371.2	391.8	353.8	343.5	319.8	287.3
SOYBEANS		US, NO. 2 YELLOW, CIF ROTTERDAM											US DOLLARS / TONNE
465	383	404	395	389	397	405	381	368	376	368	372	367	369
SOYBEAN OIL		DUTCH, FOB EX-MILL											US DOLLARS / TONNE
880	749	747	749	781	793	751	730	727	742	726	761	726	758
SUNFLOWER OIL		EU, FOB, N.W. EUROPEAN PORTS											US DOLLARS / TONNE
883	853	801	838	904	918	832	812	815	883	862	852	846r	870
GROUNDNUT OIL		ANY ORIGIN, CIF ROTTERDAM											US DOLLARS / TONNE
1317	1319	1356	1348	1345	1345	1345	1331	1321	1314	1298	1283	1274	1271
COPRA		PHILIPPINES/INDONESIA, CIF N.W. EUROPEAN PORTS											US DOLLARS / TONNE
837	737	721	714	748	748	735	689	699	736	716	759	763	813
COCONUT OIL		PHILIPPINES/INDONESIA, CIF ROTTERDAM											US DOLLARS / TONNE
1257	1112	1096	1080	1133	1131	1100	1037	1063	1108	1073	1147	1155r	1215
PALM KERNEL OIL		MALAYSIA/INDONESIA, CIF ROTTERDAM											US DOLLARS / TONNE
1092	891	1043	985	966	919	869	739	798	860	785	847	894	988
PALM OIL		INDONESIA/MALAYSIA, 5% FFA, CIF N.W. EUROPEAN PORTS											US DOLLARS / TONNE
788	608	674	662	659	671	635	549	538	583	558	568	566	639
COTTONSEED OIL		UNITED STATES, CRUDE, FOB MISSISSIPPI VALLEY											US DOLLARS / TONNE
1343	1064	1071	1044	1071	1120	1070	1005	1068	1071	1076	1080	1016	1080

MONTHLY AVERAGE PRICES

1 - FOOD, TROPICAL BEVERAGES AND VEGETABLE OILSEEDS AND OILS



MONTHLY AVERAGE PRICES

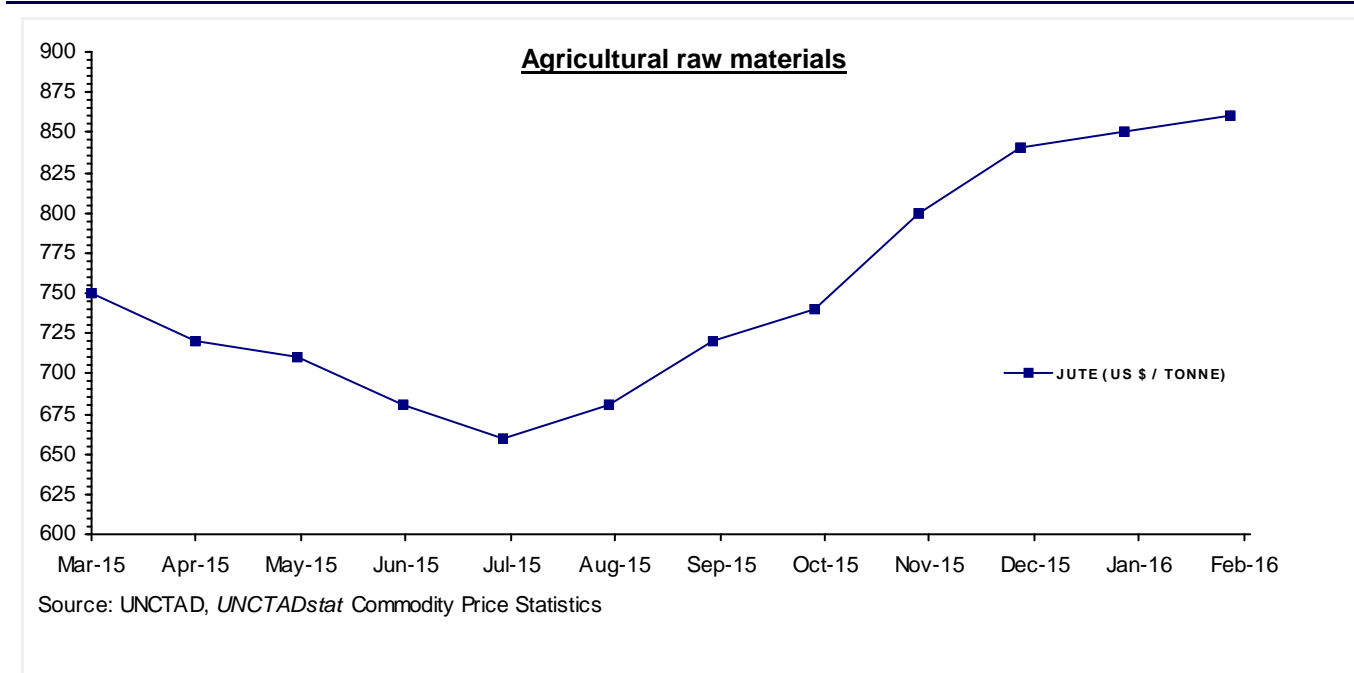
2 - AGRICULTURAL RAW MATERIALS

Moving averages		Mar 15	Apr 15	May 15	Jun 15	Jul 15	Aug 15	Sep 15	Oct 15	Nov 15	Dec 15	Jan 16	Feb 16
Mar 14 to Feb 15	Mar 15 to Feb 16												
LINSEED OIL		ANY ORIGIN, EX-TANK, ROTTERDAM										US DOLLARS / TONNE	
1223	1010	1115	1123	1116	1113	1161	1111	1036	917	876	860	878	808
TOBACCO		UNMANUFACTURED, US IMPORT UNIT VALUE										US DOLLARS / TONNE	
4979	4872	4962	4987	5018	4947	4878	4926	4887	4858	4798	4774	4714r	4714e
COTTON 3		US, MEMPHIS EASTERN, MIDD. 1-3/32", CFR FAR EASTERN										US CENTS / LB.	
82.65	74.97	72.88	74.85	74.81	75.38	75.85	77.38	74.94	75.95	75.94	76.38	74.13r	71.19
COTTON 4		US, MEMPHIS/ORLEANS/TEXAS, MIDD.1", CFR FAR EASTERN										US CENTS / LB.	
82.17	73.76	72.13	74.20	74.50	74.63	75.10	76.75	73.94	74.30	74.31	74.81	71.63r	68.88
COTTON 6		INDEX A (M 1-3/32"), COTTON OUTLOOK, LIVERPOOL										US CENTS / LB.	
78.51	70.25	69.35	71.70	72.86	72.35	72.35	71.82	68.74	69.03	69.22	70.39	68.75	66.50
WOOL 1		AUSTRALIAN FINE WOOL 19 MICRON										US DOLLARS / TONNE	
10452	10155	9294.5	9867.6	11145.8	11378.0	10096.5	10226.8	9667.5	9560.6	10030.6	10283.2	10142.3	10170.6
WOOL 2		AUSTRALIAN COARSE WOOL 23 MICRON										US DOLLARS / TONNE	
9960	9309	8711.6	8831.4	9763.4	10285.7	9443.5	9792.8	9025.1	8848.8	9020.5	9099.1	9309.2	9572.7
JUTE		BANGLADESH, BWD, FOB MONGLA										US DOLLARS / TONNE	
655	751	750	720	710	680	660	680	720	740	800	840	850r	860
SISAL 1		TANZANIA/KENYA, NO.2 & 3 LONG, CIF MAIN EUROPEAN PORTS										US DOLLARS / TONNE	
1768	2201	1975	2050	2050	2090	2120	2175	2275	2300	2325	2350	2350	2350
SISAL 2		TANZANIA/KENYA, NO.3 & UG, CIF MAIN EUROPEAN PORTS										US DOLLARS / TONNE	
1668	2068	1875	1925	1925	1965	1995	2050	2150	2175	2175	2195	2195	2195
CATTLE HIDES		CHICAGO, PACKER'S HEAVY NATIVE STEERS, FOB										US CENTS / LB.	
110	82	105	100	96	94	83	71	75	75	70	70	70	70
NON-CONIFEROUS WOODS		UK, IMPORT PRICE INDEX (DOLLAR EQUIVALENT)										INDEX 2010=100	
102.1	90.2	95.6	93.9	92.2	92.2	91.2	89.6	89.7	88.6	88.2	87.9	87.6r	86.2
TROPICAL LOGS 1		SAPELE, LM, FOB UK IMPORT PRICE										US DOLLARS / CUBIC METER	
452.7	385.5	379.2	377.8	390.8	392.5	385.1	389.8	393.0	393.3	375.9	380.6	380.2	388.4
TROPICAL LOGS 2		OKOUME (60% CI, 40% CE, 20% CS), FOB										US DOLLARS / CUBIC METER	
436.2	249.3	308.1	258.7	267.6	269.2	261.1	261.8	246.9	241.5	220.1	217.5	217.2	221.8
TROPICAL SAWNWOOD		MALAYSIA, DARK RED MERANTI, SEL/BTR, CFR PLUS COMMISSION UK										£ / CUBIC METER	
545	545.3	545.0	544.2	545.1	544.5	545.0	545.8	545.9	544.9	545.5	545.5	546.3	545.6
PLYWOOD		AFRICA/SOUTHEAST ASIA, LAUAN, WHOLESALE PRICE, SPOT TOKYO										US CENTS / SHEET	
505.7	452.6	453.60	456.80	452.10	441.29	442.54	443.30	454.48	455.00	445.50	448.70	461.80	475.70

MONTHLY AVERAGE PRICES

2 - AGRICULTURAL RAW MATERIALS

Moving averages		Mar 15	Apr 15	May 15	Jun 15	Jul 15	Aug 15	Sep 15	Oct 15	Nov 15	Dec 15	Jan 16	Feb 16
Mar 14 to Feb 15	Mar 15 to Feb 16												
PLYWOOD CM		AS ABOVE										US DOLLARS / CUBIC METER	
763.4	683.1	684.70	689.53	682.44	666.12	668.01	669.15	686.02	686.81	672.47	677.30	697.08	718.06
RUBBER 1		RSS 3, MONTHLY AVERAGE OF WEIGHTED DAILY FUTURE PRICES										US CENTS / KG	
187.3	147.7	173.5	170.0	184.2	182.9	164.0	142.1	131.2	130.1	122.2	124.8	122.0	125.8
RUBBER 2		TSR20 NEW YORK CIF										US DOLLARS / TONNE	
1867	1540	1663.50	1643.90	1776.80	1817.00	1700.60	1588.00	1488.00	1473.40	1407.80	1375.40	1291.80	1258.00



MONTHLY AVERAGE PRICES

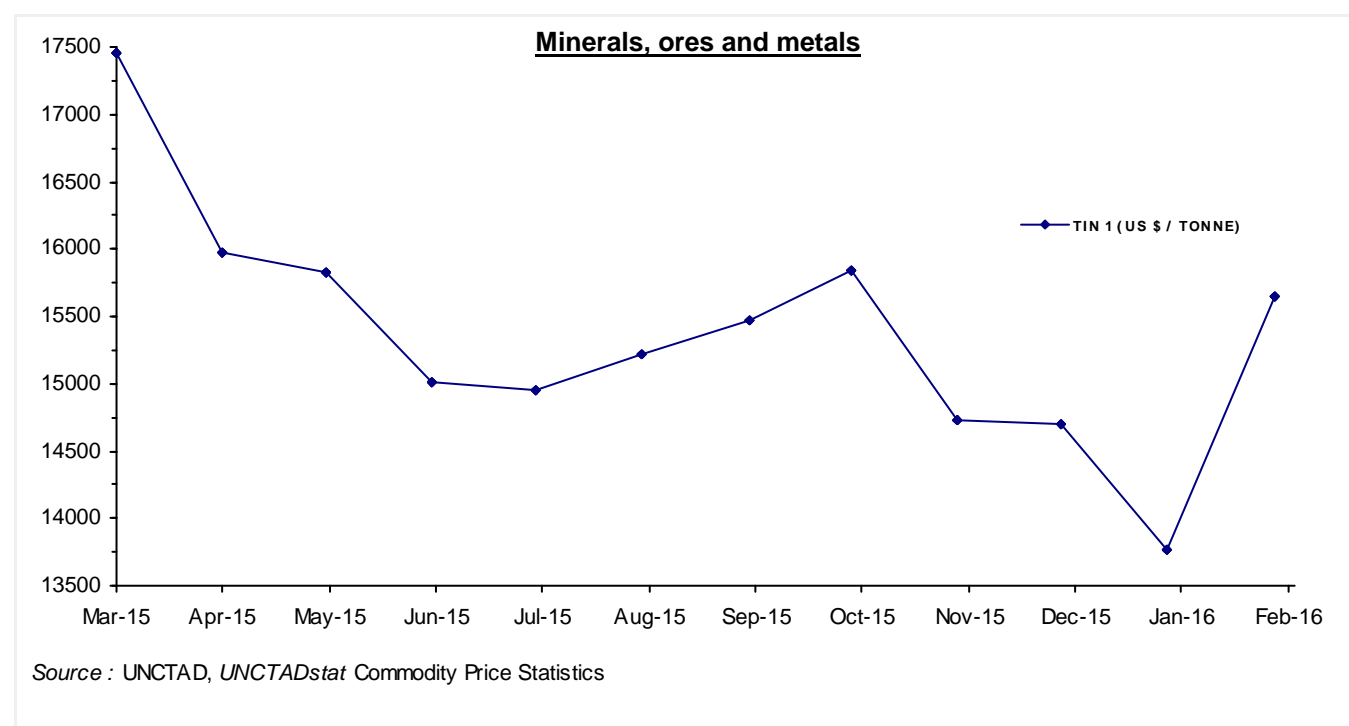
3 - MINERALS, ORES AND METALS

Moving averages		Mar 15	Apr 15	May 15	Jun 15	Jul 15	Aug 15	Sep 15	Oct 15	Nov 15	Dec 15	Jan 16	Feb 16
Mar 14 to Feb 15	Mar 15 to Feb 16												
PHOSPHATE ROCK		K HOURIBGA, 70% BPL, CONTRACT, FAS CASABLANCA										US DOLLARS / TONNE	
112.3	117.7	115.00	115.00	115.00	115.00	115.00	115.00	121.00	123.00	123.00	122.50	118.00	115.00
MANGANESE ORE INDEX		44% MN, CIF TIANJIN										US DOLLARS / TONNE	
432	269	352	309	302	300	302	304	293	261	224	196	181	201
MANGANESE FLAKE		99.7% ELECTROLYTIC, FREE MARKET, IN WAREHOUSE										US DOLLARS / TONNE	
2210	1765	2045	1989	1788	1815	1780	1667	1627	1616	1488	1595	1758	2013
IRON ORE 1		62% Fe, CHINA IMPORT, SPOT (CFR TIANJIN PORT)										US DOLLARS / DRY TONNE	
87.05	52.2	57.10	51.80	60.82	62.90	52.15	55.73	57.02	53.16	46.58	40.39	41.89	46.89
IRON ORE 2		62% Fe, OFFSHORE EXPORT PRICE AUSTRALIA TO CHINA, CIF										US DOLLARS / DRY TONNE	
87.25	52.29	58.00	52.05	60.21	62.64	52.39	56.19	56.82	53.66	46.86	40.46	41.83	46.42
IRON ORE 3		65% Fe, OFFSHORE EXPORT PRICE BRAZIL TO CHINA, CIF										US DOLLARS / DRY TONNE	
95.08	57.32	64.00	57.30	66.67	69.93	58.83	63.76	62.89	58.20	50.45	43.33	43.98	48.48
ALUMINIUM		LONDON METAL EXCHANGE, HIGH GRADE, CASH										US DOLLARS / TONNE	
1883	1612	1772.3	1816.8	1804.8	1683.2	1637.8	1539.5	1588.5	1523.7	1465.4	1493.9	1479.1	1535.2
COPPER 1		LONDON METAL EXCHANGE, GRADE A, CASH										STERLING POUNDS / TONNE	
4065	3496	3957.8	4032.2	4073.9	3751.4	3507.3	3261.8	3394.4	3406.3	3164.0	3089.0	3099.8	3214.1
COPPER 1 \$		AS ABOVE										US DOLLARS / TONNE	
6616	5296	5930.0	6032.6	6295.8	5840.6	5457.4	5079.9	5202.9	5224.9	4806.4	4625.8	4457.5	4595.2
COPPER 2		US PRODUCER/REFINERY, WIRE BARS, FOB										US CENTS / LB.	
306.2	245.8	276.4	280.8	294.7	272.5	253.3	238.7	242.6	242.1r	220.7r	212.5e	204.8e	210.9
NICKEL 1		LONDON METAL EXCHANGE, CASH										US DOLLARS / TONNE	
16950	10789	13742.2	12779.8	13505.0	12776.6	11380.5	10338.8	9895.5	10341.4	9228.6	8688.7	8479.9	8306.4
NICKEL 2		NEW YORK DEALER, 4X4 CATHODES, ESTIMATED MARKET PRICE										US CENTS / LB.	
775.4	493.5	628.6e	584.6e	617.8e	584.5e	520.6e	472.9e	452.7e	473.1e	422.2e	397.5e	387.9e	380.0e
LEAD 1		LONDON METAL EXCHANGE, CASH SETTLEMENT										STERLING POUNDS / TONNE	
1256	1169	1192.1	1337.2	1296.0	1181.1	1133.4	1085.1	1096.4	1124.7	1063.5	1135.3	1144.0	1238.5
LEAD 1 \$		AS ABOVE										US DOLLARS / TONNE	
2044	1768	1786.2	2000.6	2002.9	1838.8	1763.6	1689.9	1680.6	1725.1	1615.6	1700.2	1645.0	1770.7
LEAD 2		NORTH AMERICA, PRODUCER PRICE										US CENTS / LB.	
113.7	98.4	99.4e	111.3e	111.5e	102.2e	98.1e	94.2e	93.6e	96.0e	89.9e	94.7e	91.6e	98.6e
ZINC 1		LONDON METAL EXCHANGE, SPECIAL HIGH GRADE, CASH SETTLEMENT										US DOLLARS / TONNE	
2173	1850	2028.6	2206.5	2289.1	2087.1	2001.7	1809.6	1718.6	1727.7	1582.0	1521.7	1511.9	1710.5
ZINC 2		NORTH AMERICA, SPECIAL HIGH GRADE										US CENTS / LB.	
107.5	91.6	100.4	108.4	111.9	102.4	98.8	89.9	85.6	85.9r	79.1r	76.1e	75.2e	85.5e
TIN 1		LONDON METAL EXCHANGE, CASH										US DOLLARS / TONNE	
21314	15382	17454	15979	15819	15010	14954	15219	15469	15839	14735	14694	13769	15647

MONTHLY AVERAGE PRICES

3 - MINERALS, ORES AND METALS

Moving averages		Mar 15	Apr 15	May 15	Jun 15	Jul 15	Aug 15	Sep 15	Oct 15	Nov 15	Dec 15	Jan 16	Feb 16
Mar 14 to Feb 15	Mar 15 to Feb 16												
TIN 2		KUALA LUMPUR TIN MARKET, EX-SMELTER										MALAYSIAN DOLLARS / KG.	
70.55	61.46	64.40	58.34	57.13	56.70	56.55	61.78	65.16	67.02	63.56	62.61	59.66	64.55
TIN 2 \$		AS ABOVE										US DOLLARS / TONNE	
21306	15338	17494.3	16053.1	15873.9	15161.2	14873.4	15193.9	15116.2	15756.7	14731.7	14622.4	13736.7	15444.8
TUNGSTEN APT		EUROPEAN FREE MARKET										US DOLLARS / MTU	
342.8	207.3	271.81	254.17	243.06	227.50	222.75	206.44	188.61	183.89	172.50	176.50	171.11	169.38
FERRO-TUNGSTEN		BASIS 75% W, ROTTERDAM, DUTY UNPAID, IN WAREHOUSE										US DOLLARS / KG	
39.75	26.85	33.65	34.31	32.69	29.54	27.72	26.69	24.78	22.75	21.71	22.55	23.42	22.39
GOLD		LONDON, 99.5% FINE, AFTERNOON FIXING										US DOLLARS / TROY OUNCE	
1261	1145	1178.63	1197.91	1199.05	1181.51	1130.04	1117.48	1124.53	1159.25	1085.70	1068.25	1097.38	1199.91
SILVER		HANDY & HARMAN, 99.9% GRADE REFINED, NEW YORK										US CENTS / TROY OUNCE	
1851	1532	1624.00	1634.10	1683.28	1607.46	1505.32	1494.12	1475.02	1581.25	1445.23	1408.55	1411.18	1516.73
CRUDE PETROLEUM 1		UK BRENT, DUBAI & WTI AVERAGE, EQUALLY WEIGHTED, SPOT, FOB										US DOLLARS / BARREL	
87.52	47.34	52.83	57.42	62.50	61.30	54.43	45.72	46.29	46.96	43.13	36.56	29.92	31.05
CRUDE PETROLEUM 2		UK BRENT, LIGHT BLEND 38° API, SPOT PRICE, FOB UK PORTS										US DOLLARS / BARREL	
89.78	48.87	55.79	59.39	64.56	62.35	55.87	46.99	47.23	48.12	44.42	37.72	30.80	33.20
CRUDE PETROLEUM 3		DUBAI, MEDIUM, FATEH 32° API, SPOT PRICE, FOB DUBAI										US DOLLARS / BARREL	
87.78	47.43	54.91	58.67	63.67	61.76	56.27	47.30	46.14	46.55	42.32	34.70	27.25	29.61



SOURCES AND NOTES

Sources:

Bloomberg Terminal Services
Cotton Outlook, Liverpool, UK
Food and Agricultural Organization (FAO), Italy
International Cocoa Organization (ICCO), London, UK
International Coffee Organization (ICO), London, UK
International Grains Council (IGC), London, UK
International Monetary Fund (IMF), Washington D.C., USA
International Rubber Study Group (IRSG), Singapore
International Sugar Organization, London, UK
International Tropical Timber Organization (ITTO), Yokohama, Japan
Metal Bulletin, London, UK
Oil World, Hamburg, Germany
PLATTS, New York, USA
Singapore Commodity Exchange Ltd (SICOM), Singapore
The Public Ledger, London, UK
Thomson Reuters, *Datastream*
United States Department of Agriculture (USDA), Foreign Agriculture Service (FAS)
United States Geological Survey, Commodity Statistics and Information
World Bank, Washington D.C., USA

Explanation of symbols:

- " e " estimated figure
- " r " revised figure
- " .. " not available including no quotation
- " // " break in the series

The current and previous editions of the *Commodity Price Bulletin* are available in the Publications section of the Statistics portal of UNCTAD at <http://www.unctad.org>.

The long time series of annual and monthly commodity prices and prices indices are available in UNCTADstat at <http://unctadstat.unctad.org/WDS> as well as in the *Handbook of Statistics* DVD.

If you have any questions or comments concerning commodity price data, please do not hesitate to contact us:
E-mail: statistics@unctad.org