



UNODC

United Nations Office on Drugs and Crime



Center of Excellence in
STATISTICAL INFORMATION ON GOVERNMENT,
CRIME, VICTIMIZATION AND JUSTICE



INSTITUTO NACIONAL
DE ESTADÍSTICA Y GEOGRAFÍA



Pilot to measure illicit financial flows in Latin America



The pilot to measure illicit financial flows

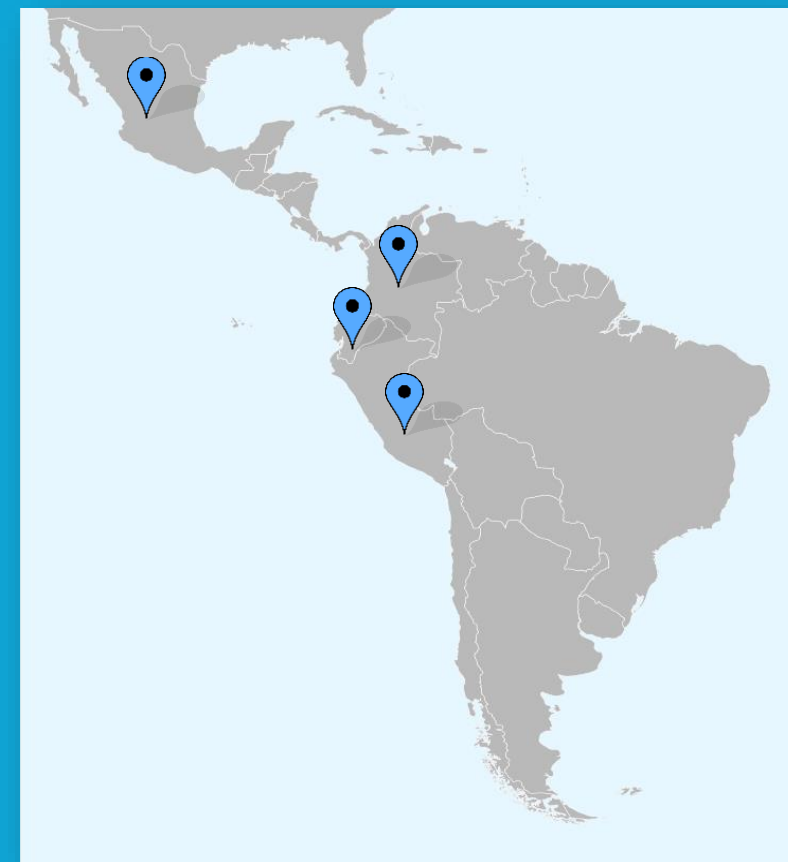
Objective: Adapt and test the methodology to measure IFF

Participating countries:

- Mexico
- Colombia
- Ecuador
- Peru

Illicit markets :

- Drugs
- Trafficking in persons
- Smuggling of migrants
- Illegal mining



Timeframe: 2018-2020

The methodology

UNCTAD focus

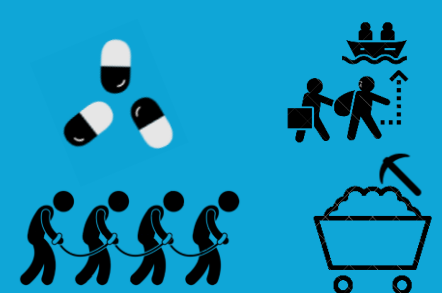
UNODC focus

Tax evasion and
tax avoidance

Corruption

Theft-type
activities

Illicit markets

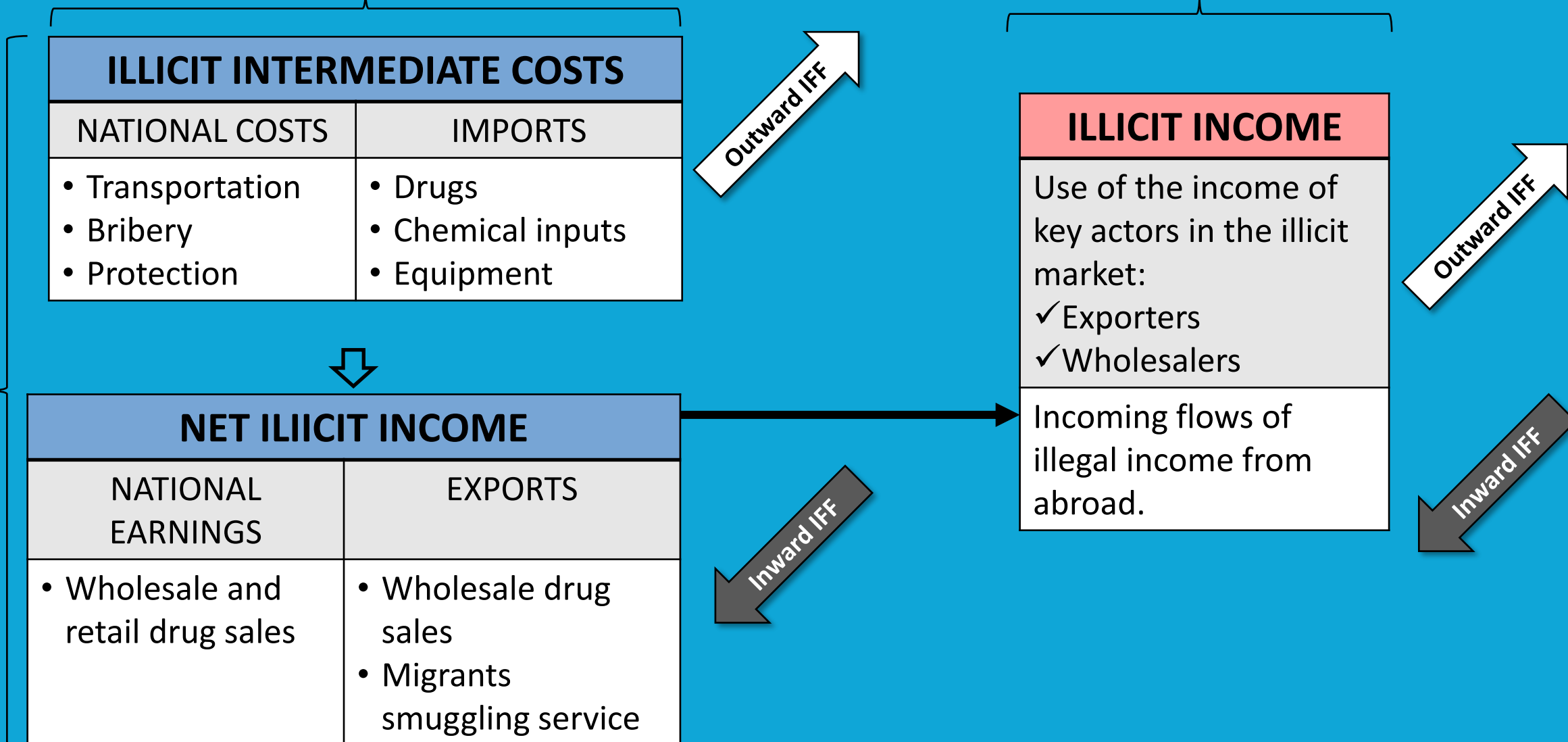


The statistical framework for measuring IFF

Income generation

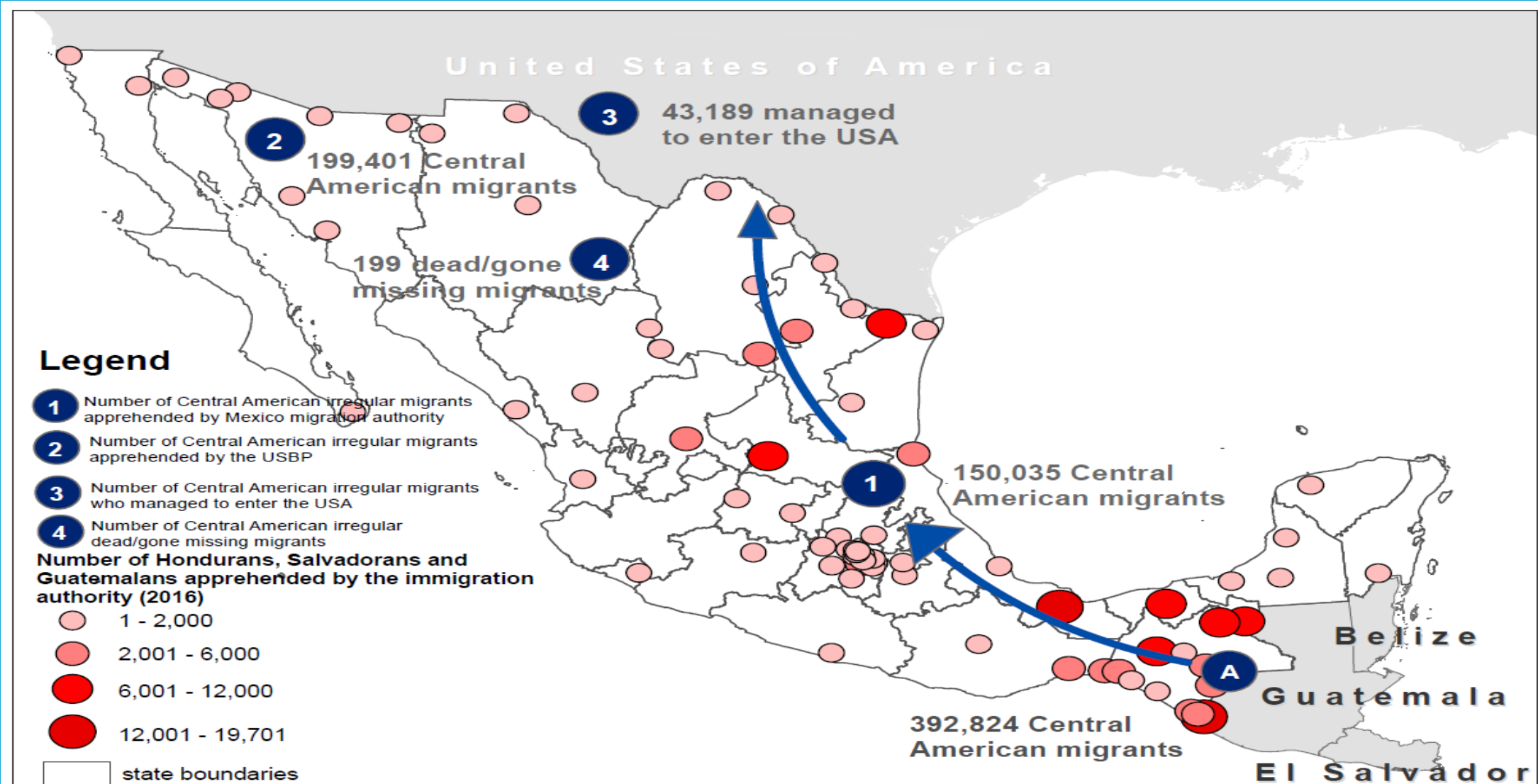
Income management

Gross illegal income

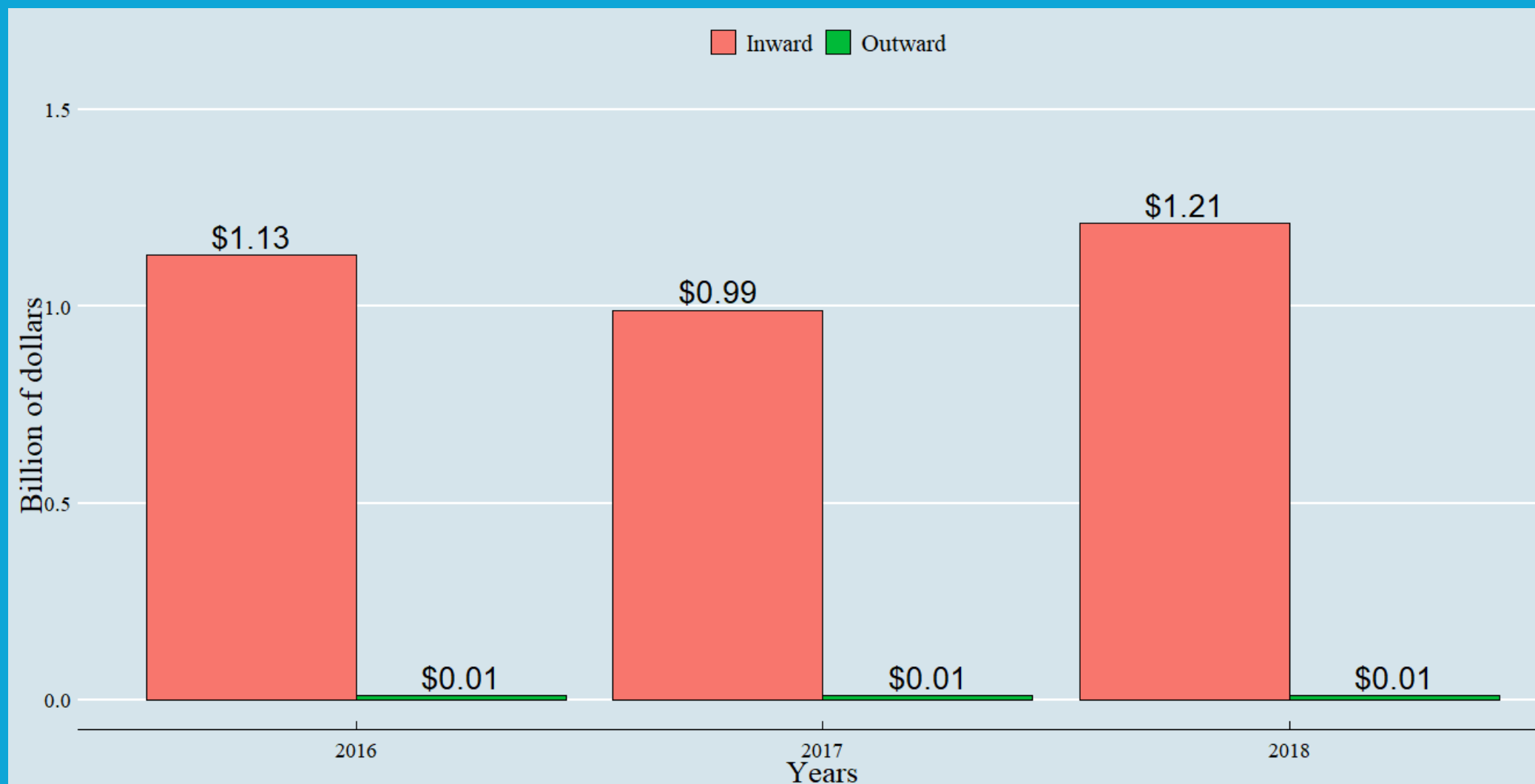


Result 1: Smuggling of migrants in Mexico

Methodology to estimate the IFFs through Mexico (2016 map):

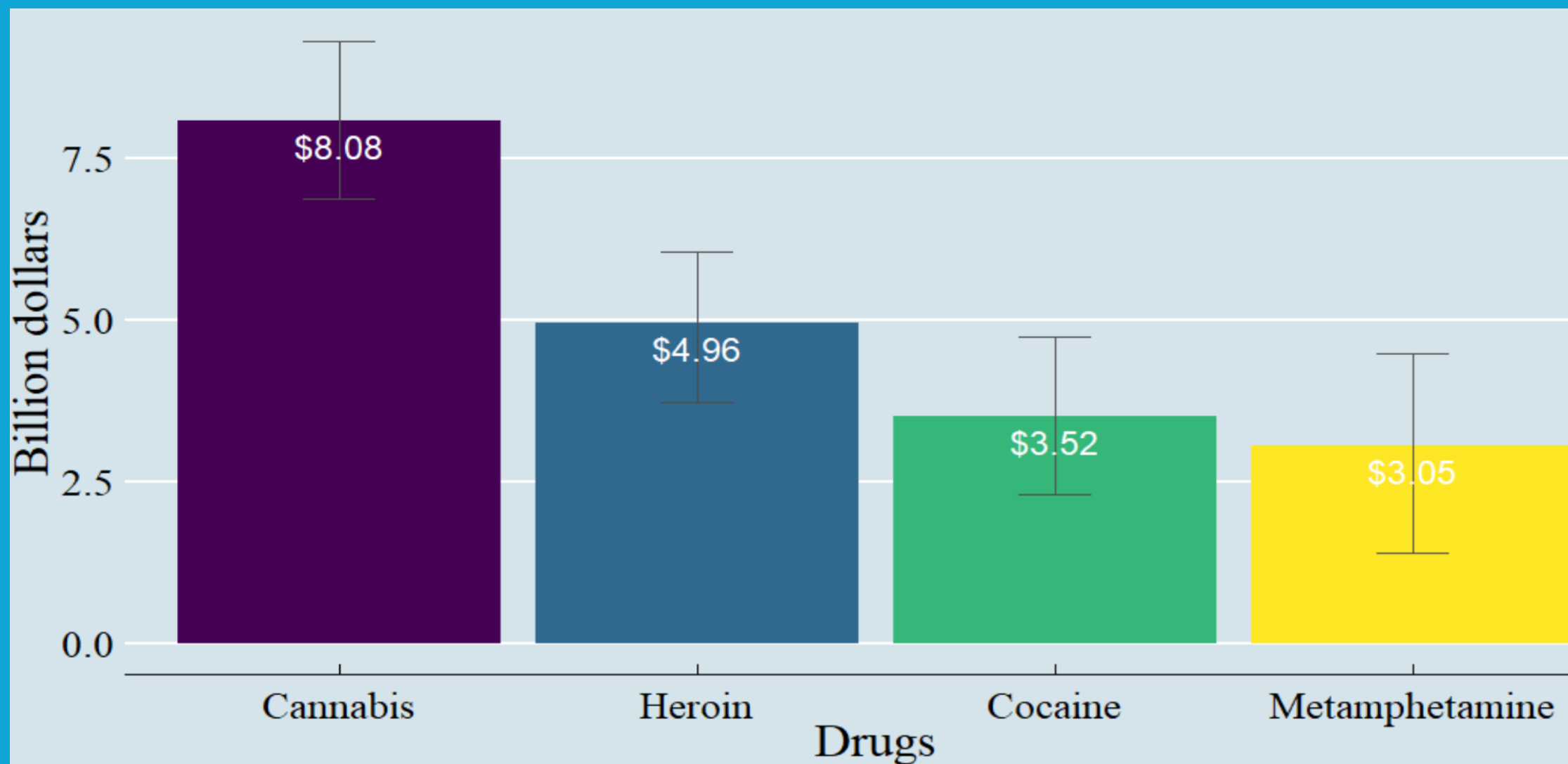


Estimated inward and outward IFFs from smuggling of migrants in Mexico

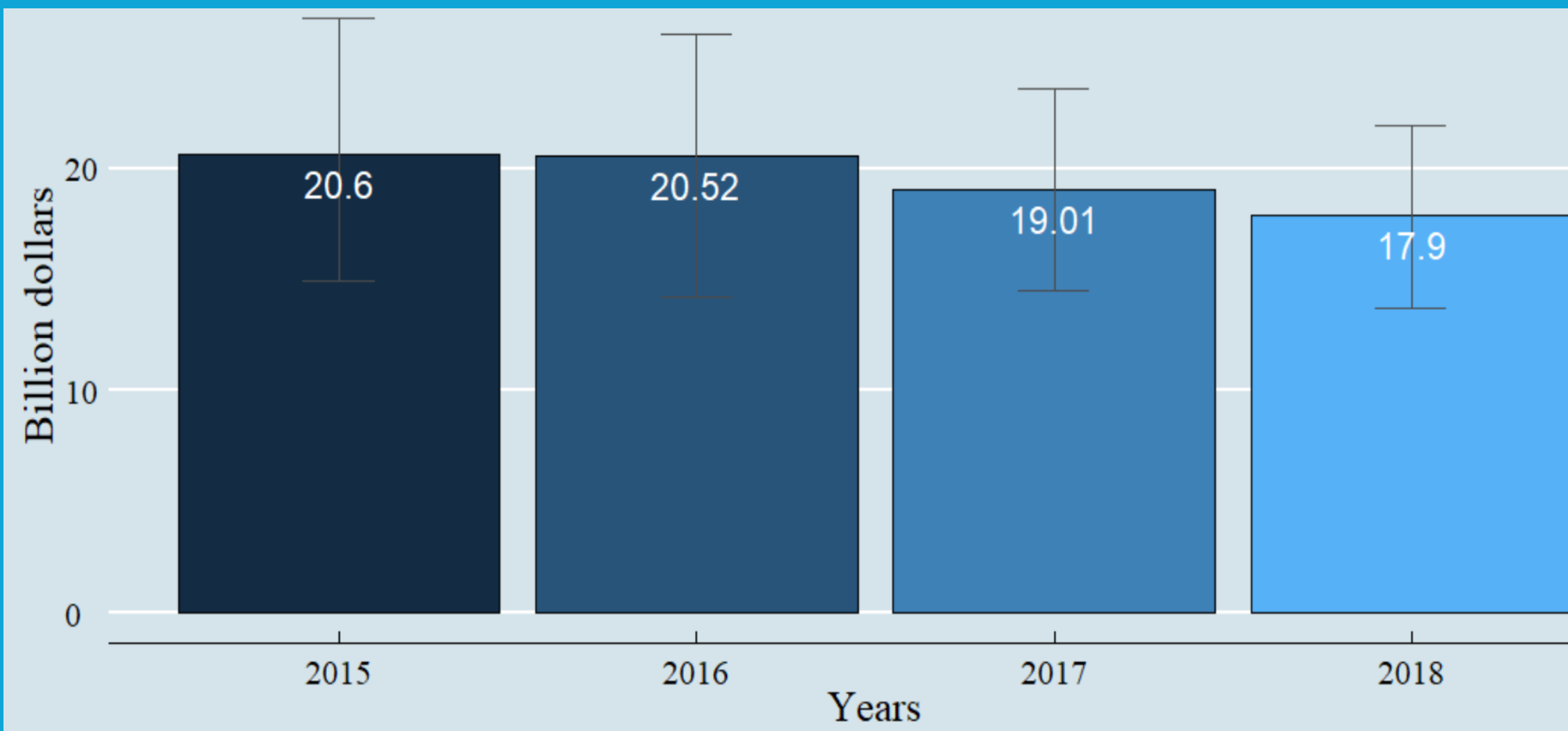


Result 2: Drug trafficking in Mexico

Estimated gross inward IFFs per drug in Mexico (2015-2018 average):



Estimated inward IFFs from drug trafficking in Mexico



CHALLENGES

✓ Methodological

- Adapt the methodology to the specific market

✓ Cooperation

- Raise awareness about indicator 16.4
- Take into account the diversity of the relevant institutions
- Engage with the institutions in the exercise

✓ Data collection

- Confidentiality
- Scarcity

BENEFITS

✓ Data collection

- Identify available data for something that had never been used before
- Data collection exercises beneficial for the institutions (pilot data forms)

✓ Increased capacity

- Analytical capacities to understand how the markets work

✓ Partnership development

- Awareness on the importance of public policies to address IFFs
- Start dialogues between countries on measuring IFFs



Thank you for your attention

- ✉ salome.flores@un.org
- 🌐 <http://www.cdeunodc.inegi.org.mx/>
- 🐦 [@CdE_UNODC](https://twitter.com/CdE_UNODC)
- f Centro de Excelencia (UNODC-INEGI)
- ▶ CdE UNODC-INEGI