



**UNODC**

United Nations Office on Drugs and Crime



# Estimating illicit financial flows related to drug trafficking activities

## General guidelines

1 September 2021

Diana Camerini

*National Kick-off Workshop of pilot activities for  
measuring Illicit Financial Flows (IFFs) in Egypt*



**UNODC**

United Nations Office on Drugs and Crime



# Income generation and income management IFFs

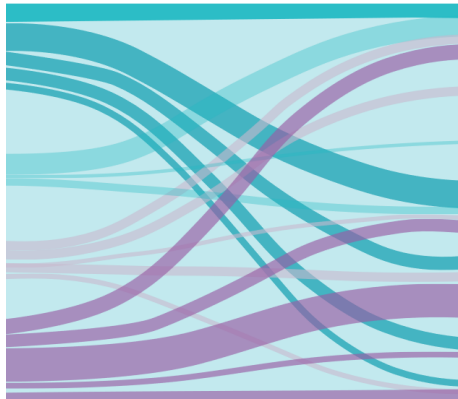
## ILLICIT FINANCIAL FLOWS

are financial flows that are illicit in origin, transfer or use, that reflect an exchange of value and that cross country borders.



CONCEPTUAL FRAMEWORK FOR THE  
STATISTICAL MEASUREMENT OF  
ILLICIT FINANCIAL FLOWS

October 2020



**Total IFFs =**

## income generation IFFs

Cross-border transactions performed in the context of the production of illicit goods and services (...). In drug trafficking, transactions finalized to payments of illicit drug exported to another country

**+**

## income management IFFs

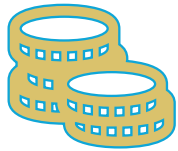
Cross-border transactions finalized to use the (illicit) income for investment in (legal or illicit) financial and non-financial assets or for consuming (legal or illegal) goods and services. In drug trafficking: cross-border investments of proceeds of crime in legitimate businesses.



## Example: IFFs emerging from drug trafficking

**Drug importing and  
consumption country**

**IFF**

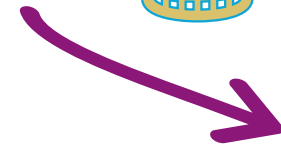
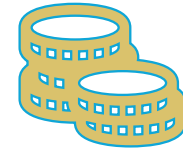


Drug processing,  
wholesale and retail sale



Value is generated

**IFF**





## Income generation IFFs and illicit drug market value

- IFF concept -> compatible with the framework of system of national account (SNA) and the balance of payments (BoP).
- **Drug trafficking**
  - productive activity (production of goods and provision of services)
  - Actors: play in an illegal market to make profits
- Measuring drug-related income generation IFFs requires to estimate the **economic value** of a number drug market components
- Three main economic components (or aggregates):
  - **Revenues: Illicit gross output**
  - **Costs: (Illicit) intermediate expenditure** or intermediate costs
  - **Profits: Illicit net output/income** (or value added)

**Illicit gross output – illicit intermediate expenditure = illicit net output/income**

- Revenues and costs: **domestic + cross-border**



## Estimating illicit drug quantities

The demand-supply equation balance helps in the process of estimating drug **quantities**

### SUPPLY-DEMAND EQUATION BALANCE

$$\text{PRODUCTION}_t + \text{IMPORTS}_t - \text{SEIZURES}_t = \text{CONSUMPTION}_t + \text{EXPORTS}_t$$

**Losses** and **inventories** would be also part of the supply side of the equation. However, due to lack of information on such aggregates, these are not estimated.

Generate  
**OUTWARD**  
IFFs



Generate  
**INWARD**  
IFFs



## Key data

For each illicit drug market selected, check availability of **data or qualitative information** on:

 Quantities	\$ Prices	 Routes
<input type="checkbox"/>	<input type="checkbox"/>	<input type="checkbox"/>
<input type="checkbox"/> Seizures	<input type="checkbox"/> Wholesale prices	<input type="checkbox"/> Drug trafficking routes
<input type="checkbox"/> Consumption	<input type="checkbox"/> Retail prices	<input type="checkbox"/> Distribution of exports
<input type="checkbox"/> Purities		<input type="checkbox"/> Distribution of imports

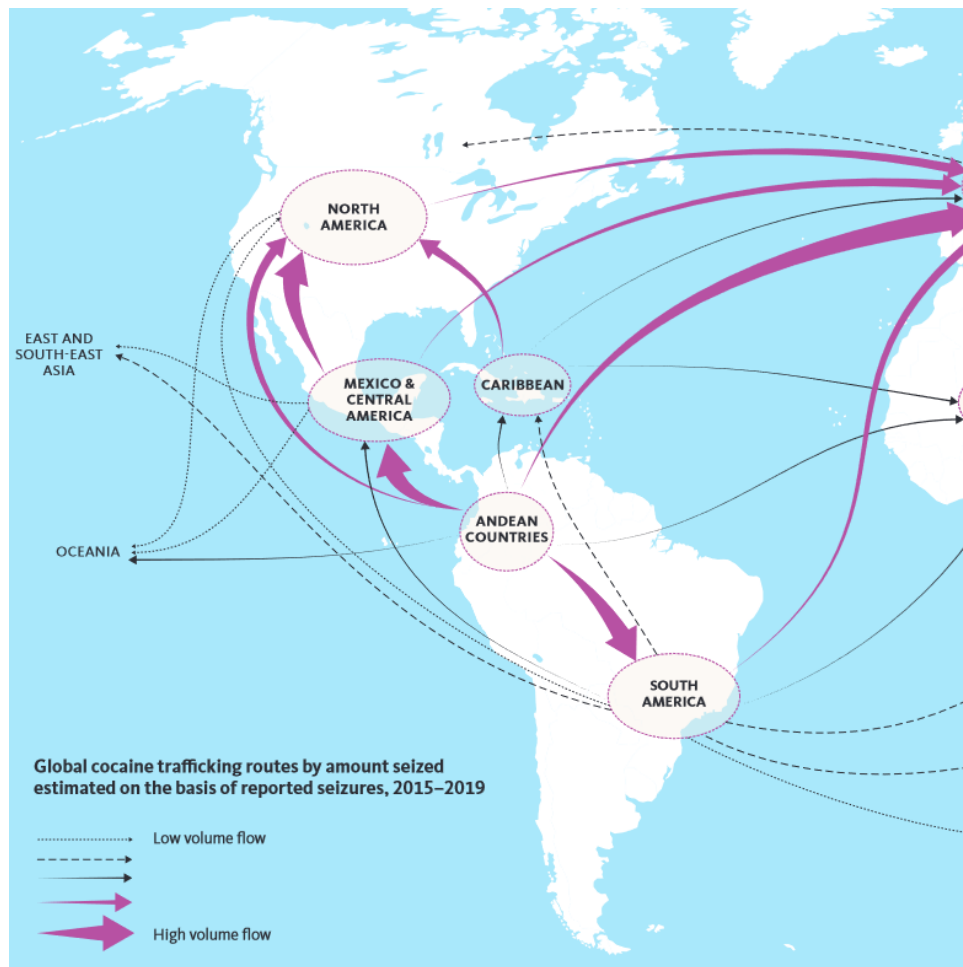


### Geographical coverage:

- national
- data from bordering countries or origin/destination countries -> drug trafficking routes analysis
- Sub-national, in case regional specificities are detected

## Example

### Estimating IFFs from cocaine trafficking in Mexico



Source: UNODC World Drug Report 2021

Mexico:

- Transit country for cocaine destined (mostly) to North America and Europe
- Route: South America -> Central America -> Northern America
- Mexican cartels: actors of trafficking from origin to destination

Mexico:

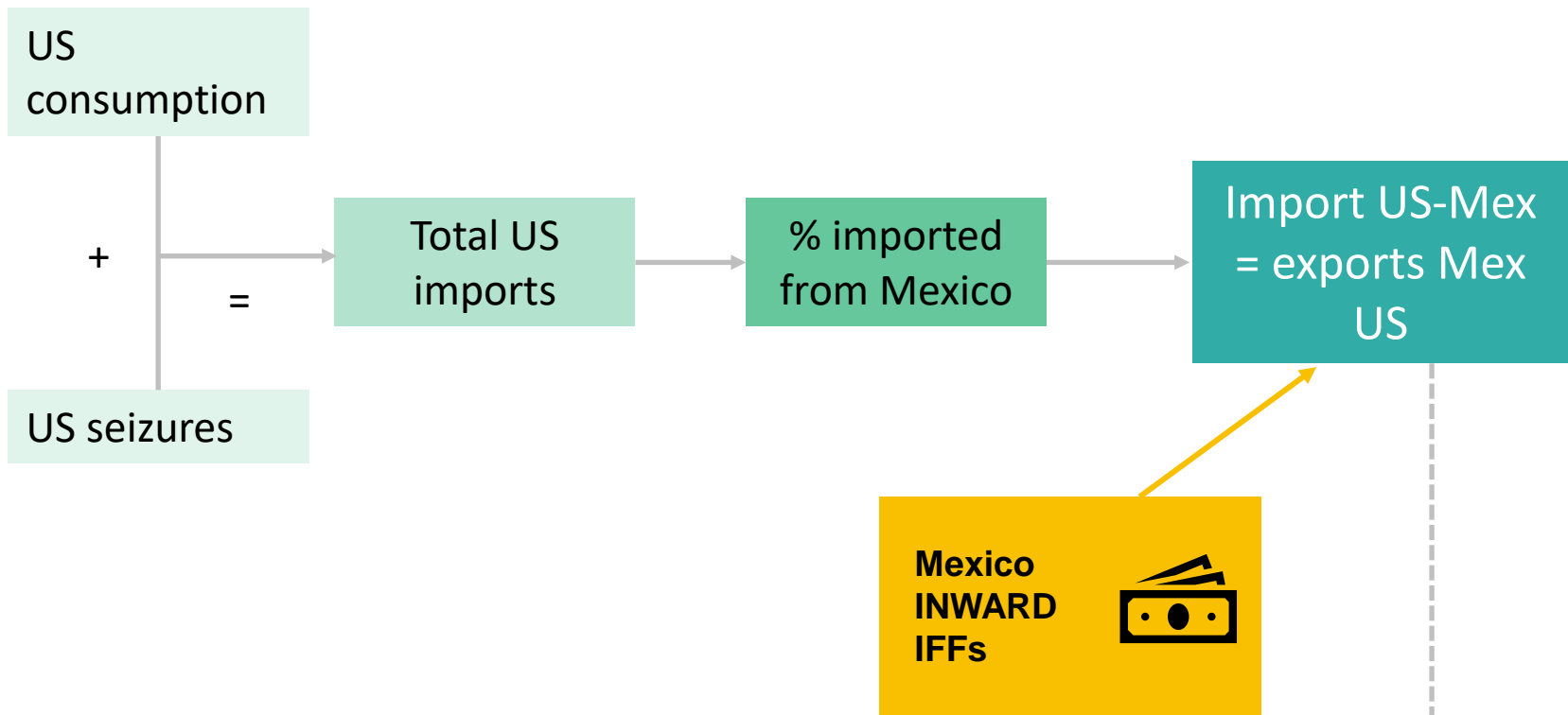
- ✓ **COCAINE IMPORT = outward IFFs**
- ✓ **COCAINE EXPORT = inward IFFs**

# Methodology to estimate IFFs from cocaine trafficking activities in Mexico

Mexico-US route

## Inward IFFs

*Demand-based approach*







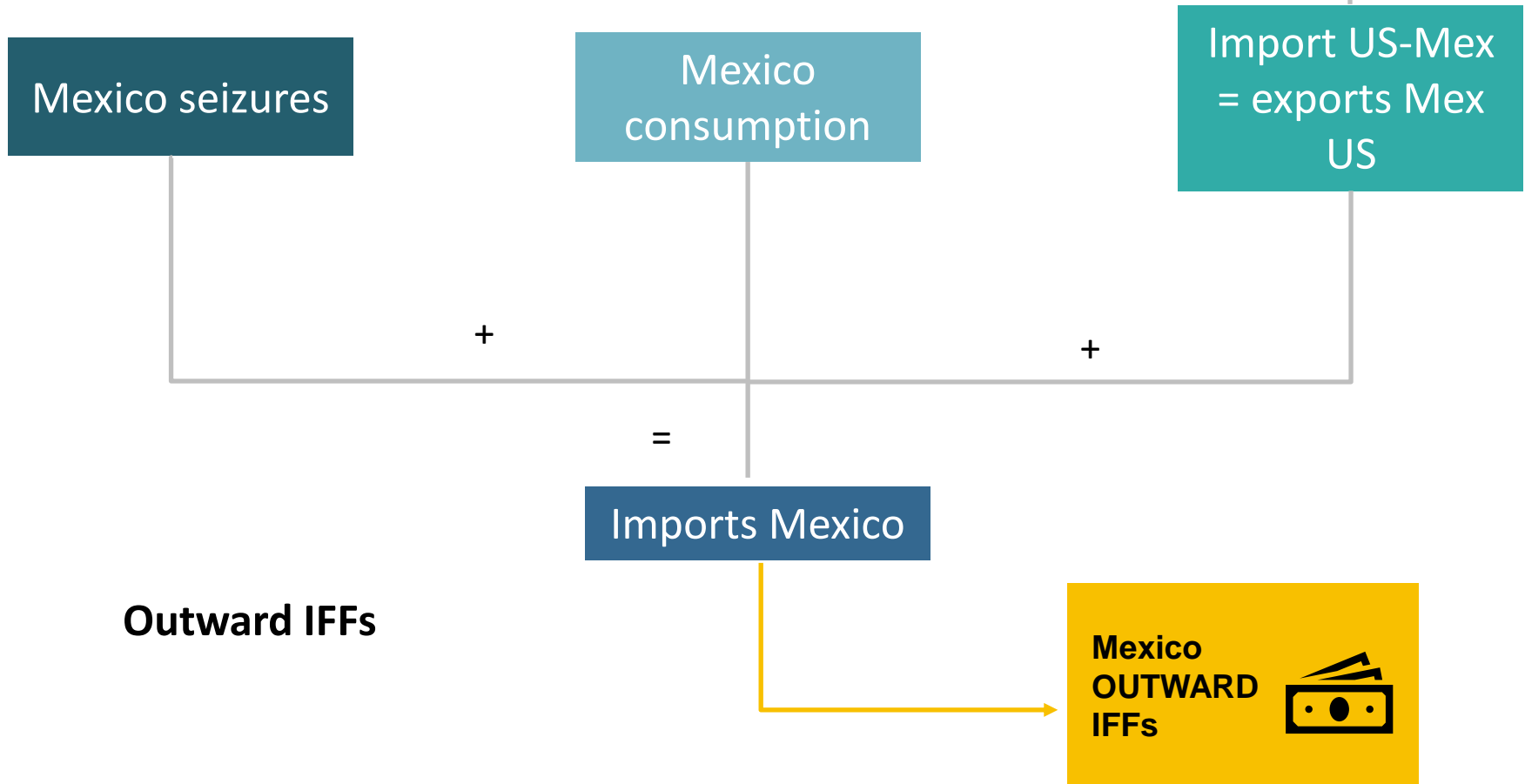
**UNODC**

United Nations Office on Drugs and Crime



# Methodology to estimate IFFs from cocaine trafficking activities in Mexico

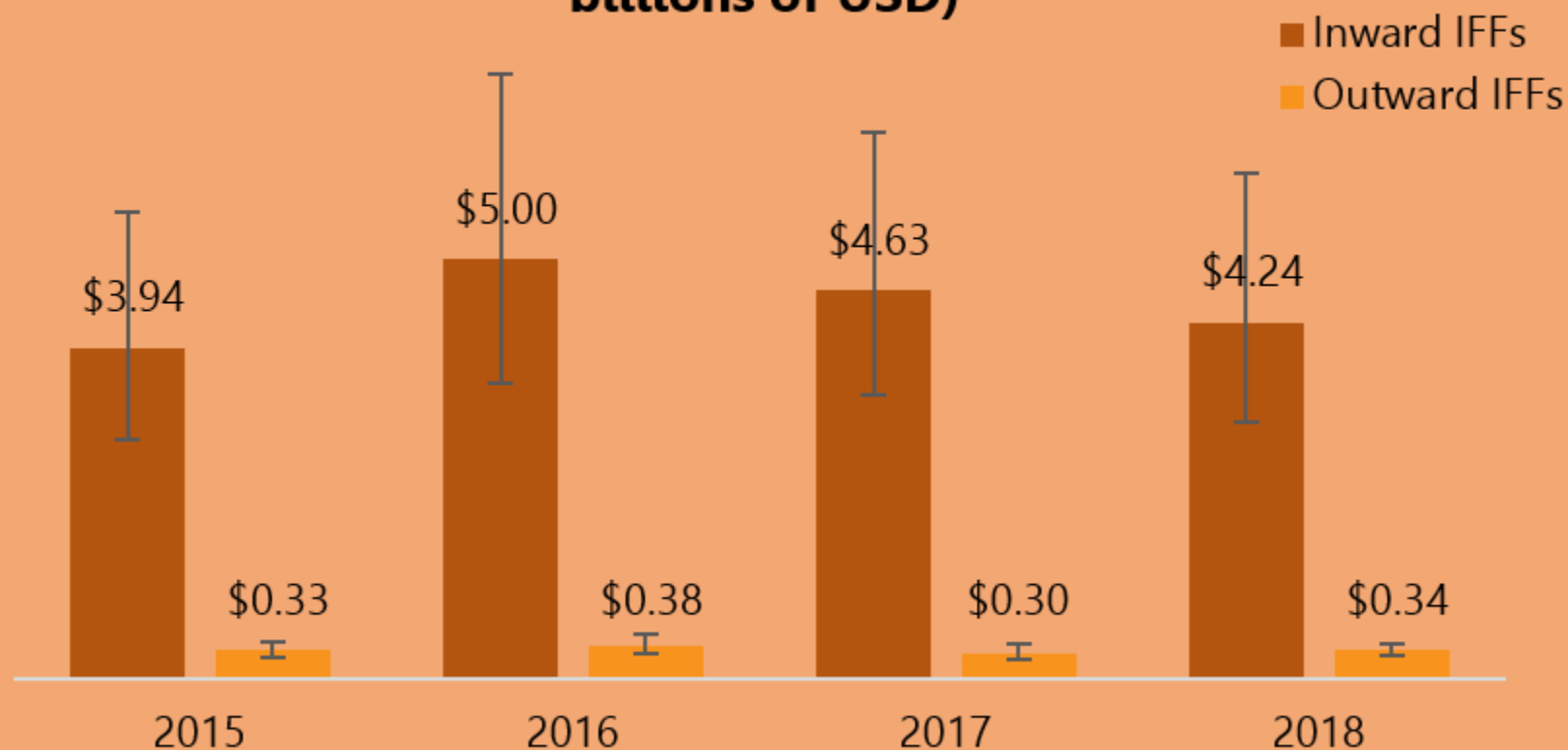
Mexico-US route





## Results

### Inward and outward IFFs from cocaine trafficking (in billions of USD)



Source: UNODC estimates.



## Required data inputs

### Egypt case

#### Data checklist

✓ Consumption

✓ Seizure data

✓ Drug prices

✓ % import

✓ % export

✓ Destination countries  
✓ Egypt

✓ Destination countries  
✓ Egypt

✓ Destination countries  
✓ Egypt

✓ Destination countries from Egypt

✓ Egypt to destination countries  
✓ Origin countries

Suggested  
method:  
**demand-side  
approach**



**UNODC**

United Nations Office on Drugs and Crime



**For more information:**  
**[UNODC-UNCTAD-ESCAP IFF Asia Project](#)**  
**[UNODC-UNCTAD IFF Latin America project](#)**

**Thank you!**

**Diana Camerini**  
**UNODC Data Development and Dissemination Section**  
**[diana.camerini@un.org](mailto:diana.camerini@un.org)**