

# Regional initiatives and collaborations on Non-Timber Forest Products (NTFP) sustainable harvest and management and participatory approaches in marketing and trade

Presented at *"Awareness Raising Webinar on Sustainable Trade of Biodiversity-based Products and Biotrade in the ASEAN Region"*, May 16, 2022



non-timber  
forest products -  
exchange programme

ASIA

*Femy Pinto, Crissy Guerrero and Diana San Jose*

# NON-TIMBER FOREST PRODUCTS EXCHANGE PROGRAMME (NTFP-EP)

Vision to 2030

**“Resilient IPLCs with the women and youth in Asia are respected stewards of healthy forests and living securely in their land for generations to come”.**

Founded in 1998, NTFP-EP is an association of 25 members and a collaborative network of over 100 partner NGOs and CBOs that provide enabling support to indigenous peoples and local communities (IPLCs).

NTFP-EP elevates community-based forest conservation, culture and indigenous knowledge, systems and practices, and gender equality and women’s rights.



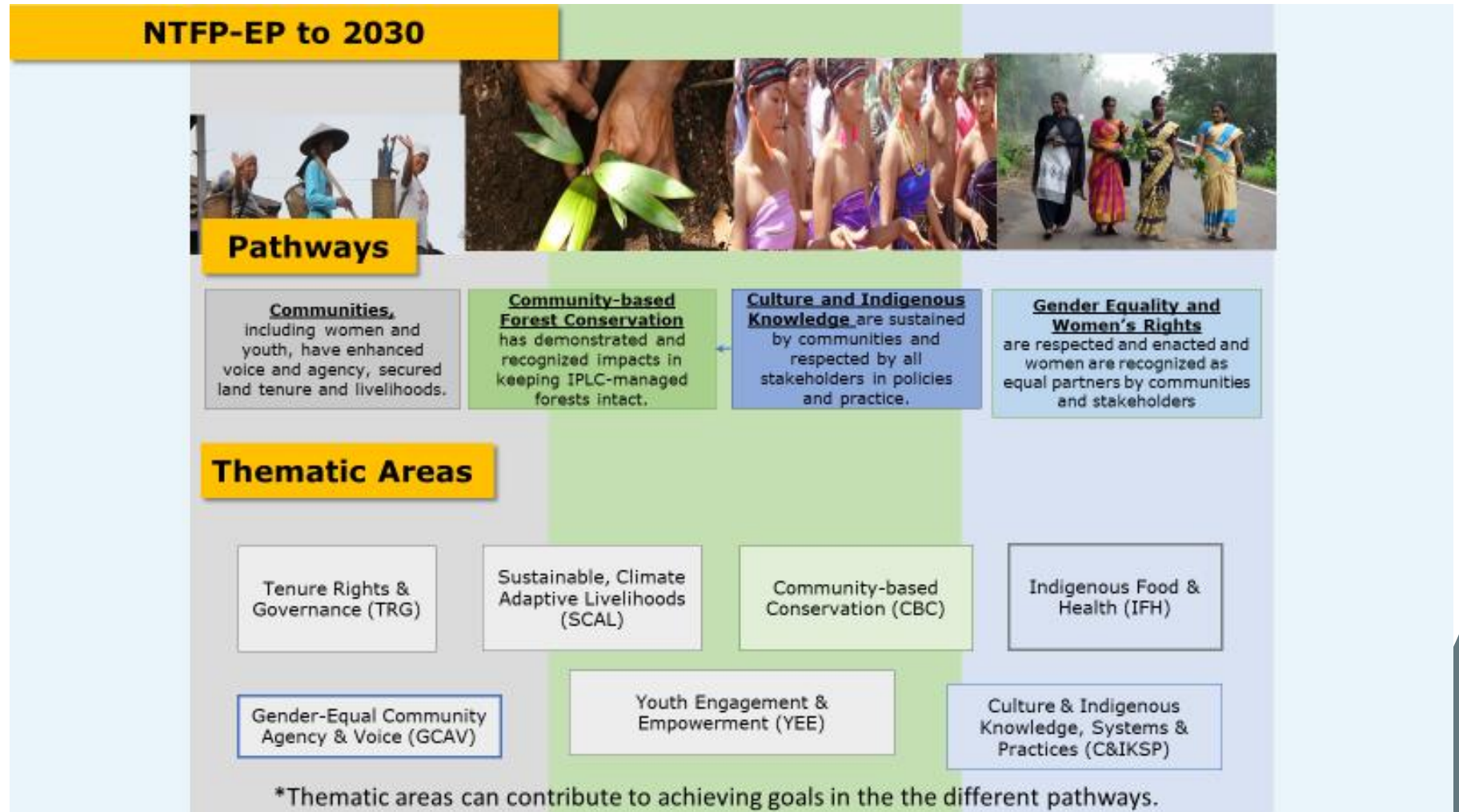
25 members

Network of over 100 partners in

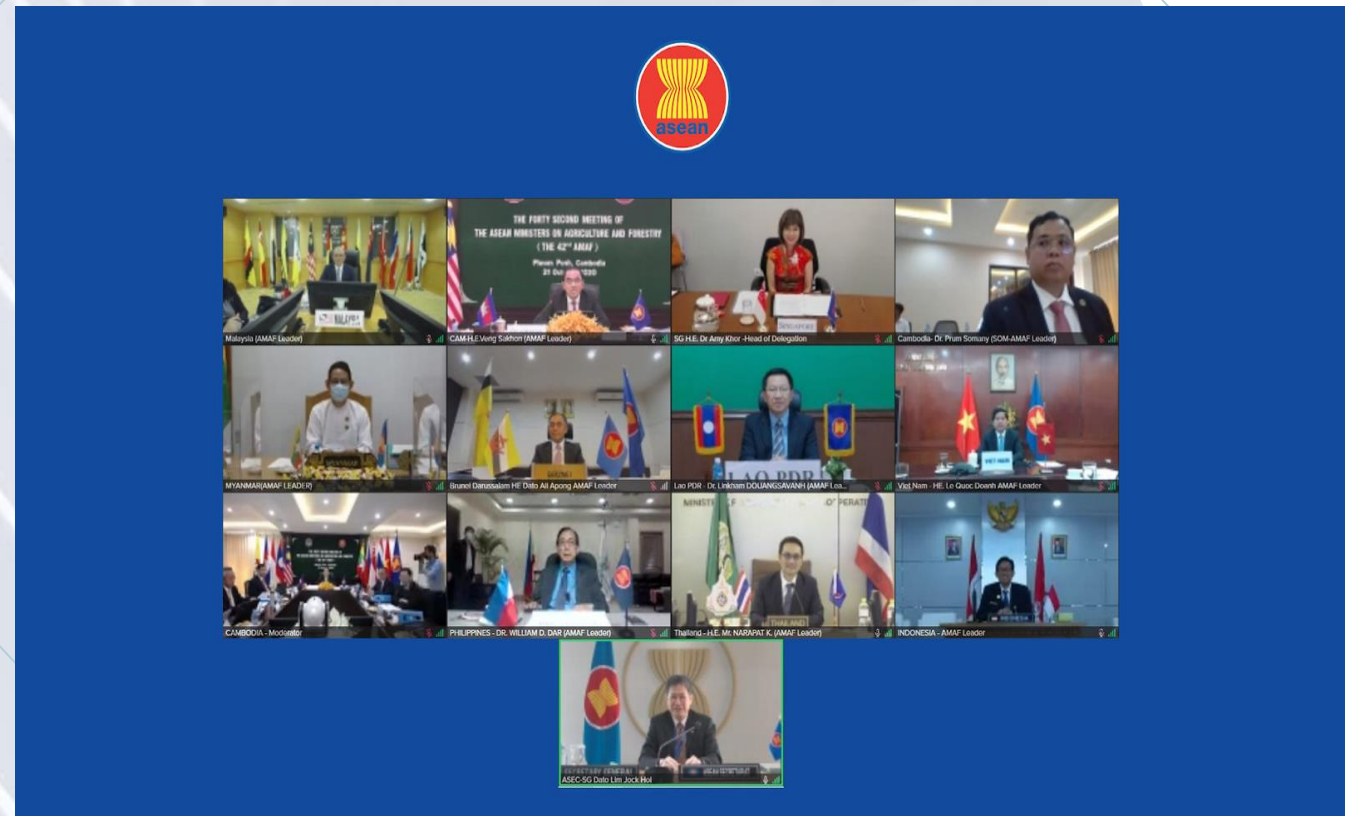
6 countries with active programs

Support Community based NTFP Enterprises (CBNEs) of Community Forest Enterprises (CFEs) with over

20,000 members



# ASEAN Guidelines for Sustainable Harvest and Resource Management Protocols for Selected Non-Timber Forest Products (NTFPs)



<https://asean.org/wp-content/uploads/2021/12/FAFD%202024.%20ASEAN%20NTFP%200Guidelines%20Final%20Draft.pdf>

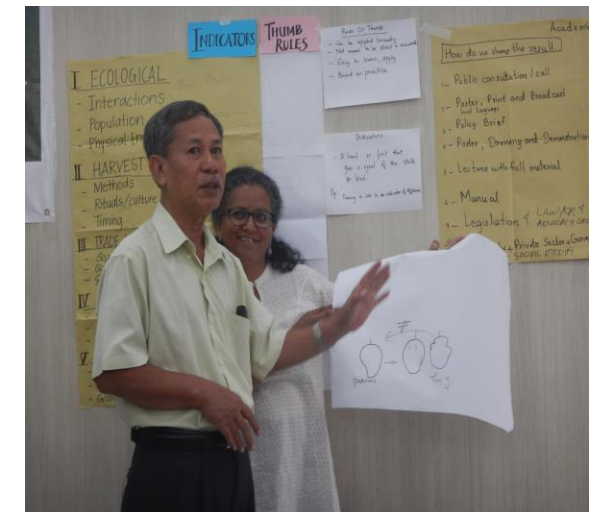
“

***STANDARDIZATION is a necessary step in the aspiration of the ASEAN Economic Community (AEC) towards global competitiveness***

## Why a guideline for NTFPs?

- There is a growing market demand for proof of sustainability and conservation
- There is an important connection among *sustainable harvests, quality of NTFP products and sustainable management of NTFPs*
- There are no quality standards yet for NTFPs or for sustainable resource management

# Consultations and reviews towards the development of the guidelines (2019-2020)

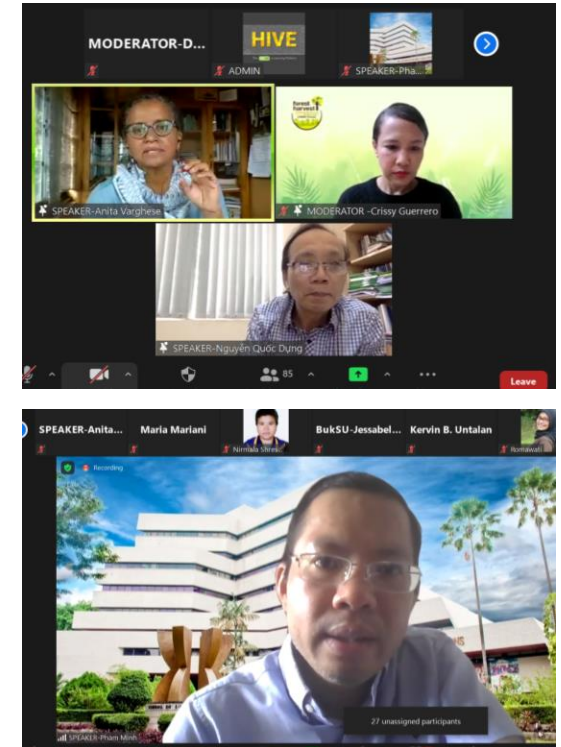


# Adoption and presentation of the guidelines (2020-2021)



Adopted by the 42<sup>nd</sup> AMAF  
October 21, 2020

A promotional poster for the Forest Harvest Forum. The background shows a man working in a forest. The text includes: "forest harvest Community-based NTFP Enterprises (CBNE) Forum", "1-5 June 2021", "2 June 2021 10:30 AM - 12:00 PM (GMT +8/Manila)", "REGISTER HERE", and "www.forestharvestforum.com". Logos for ASEAN, NTFP-EP, Green Livelihoods Alliance, Forest and Farm Facility, IFSA, and RECOFTC are displayed at the bottom.



Presentation during the  
CBNE Forest Harvest Forum  
June 2, 2021





**RATTAN**



**HONEY**



**FRUITS**



**BAMBOO**



**RESINS**

Selected Non-Timber Forest Products (NTFPs)



**ASEAN Guidelines for Sustainable Harvest and Resource Management  
Protocols for Selected Non-Timber Forest Products (NTFPs)**

*Adopted by the 42nd AMAF, 21 October 2020*

**Objectives  
of the  
guidelines**

1. To promote awareness on the value of sustainable resource management practices and the importance of sustainable harvest protocols
2. To inform and guide the formulation of policies and programs by ASEAN Member States and other related institutions in ASEAN countries with regards to the sustainable management of NTFPs
3. To enhance partnerships and cooperation among stakeholders in the ASEAN community through the establishment of a common reference for the sustainable management of NTFPs

Adopted by the 42<sup>nd</sup> AMAF, 21 October 2020



ASEAN Guidelines for Sustainable Harvest and Resource Management Protocols  
for Selected Non-Timber Forest Products (NTFPs)

- The guidelines are meant to be a primary reference to assist ASEAN member states in developing protocols and monitoring activities to achieve sustainable NTFP management
- Selected NTFPs in the guidelines include: **bamboo, fruits, honey, rattan, resin**



## FRAMEWORK & PRINCIPLES OF THE SOCIO-ECOLOGICAL MONITORING

- Incorporating traditional ecological knowledge (TEK)
- Community Engagement and information sharing
- Participatory data collection
- Establishing multi stakeholder partnerships
- Adaptive Monitoring

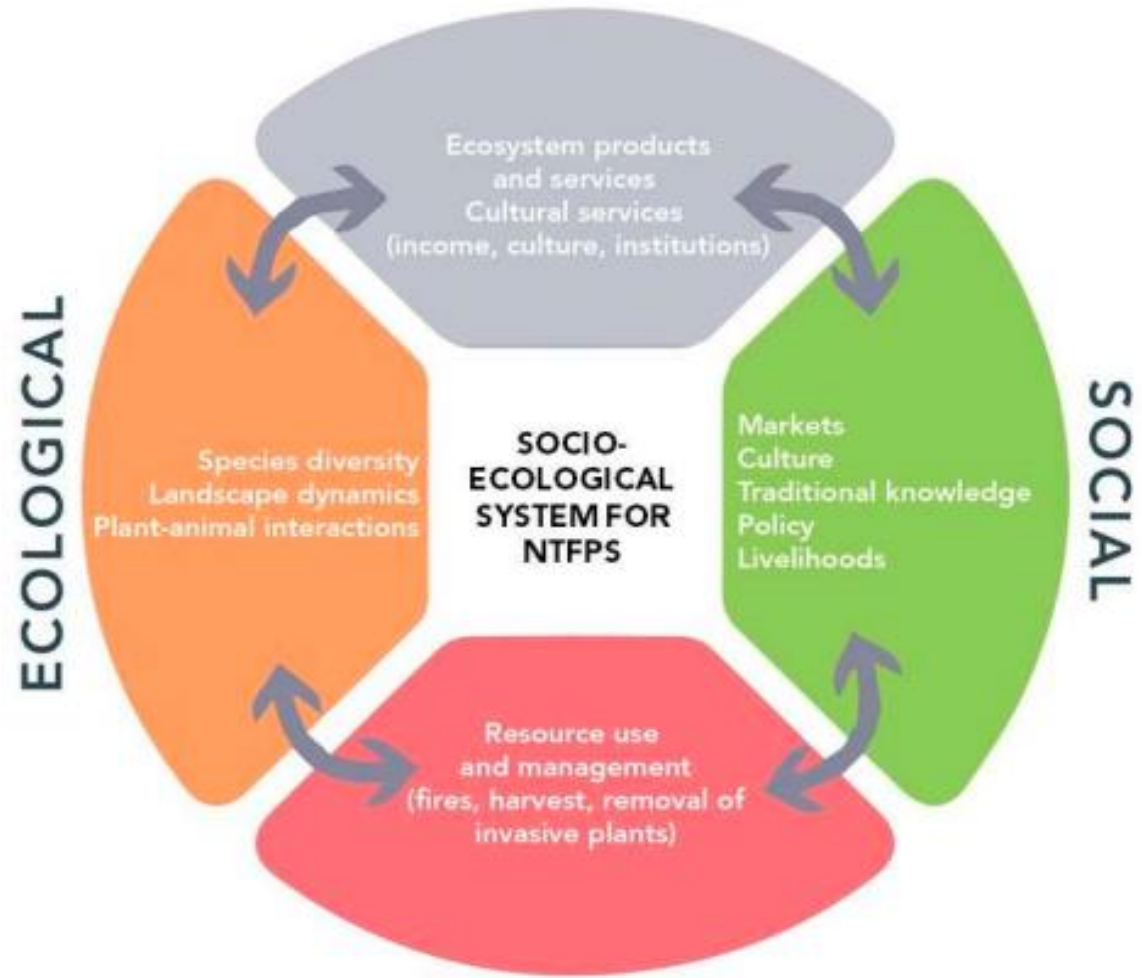


Figure 2. Socio-ecological components of an NTFP harvest system which are constantly interacting with each other. This representation is based on NTFP-EP field experiences and was developed in consultation with Prof. Tamara Ticktin, University of Hawaii.

# Rattan protocols



ASEAN Guidelines for Sustainable Harvest and Resource Management Protocols for Selected Non-Timber Forest Products (NTFPs)

# rattan

THUMB RULES & SOCIO-ECOLOGICAL INDICATORS



## THUMB RULES



## DOs

Respect local customs and rituals related to rattan harvesting

Clean leaf litter, twigs, or grass that cover the shoots so these are exposed to sunlight

Chop leaves and sheaths after harvest and place these on clumps

Harvest during dry season so stems dry quickly

Use appropriate tools and observe safety

Rattan is cut 1-1.5 meters from the ground and stems are left bent down to avoid fungus from damaging other stems

Observe proper and sustainable processing and treatment methods

Transparency in supply chain information

Advocate for supportive policies

Local groups/people's organizations, national associations, community rules, regulations to ensure proper harvesting, management, monitoring

## THUMB RULES



### DON'Ts

Do not cut support trees – climb or use tools to cut and pull the rattan

Do not damage the rattan clumps – these are important for breeding

Do not damage seedlings

Do not harvest rattan canes that are fruiting in low density areas

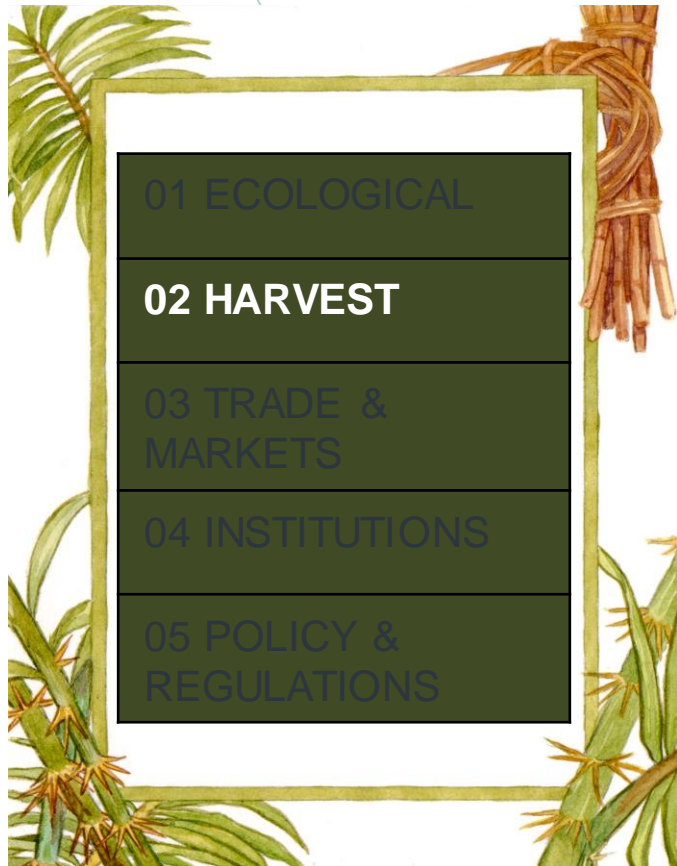
# SOCIO-ECOLOGICAL INDICATORS TO ENSURE SUSTAINABILITY AND QUALITY OF RATTAN



Ecological
<ul style="list-style-type: none"><li>• Observe the number of plant and animal species in rattan gardens</li><li>• Take note of invasive species and herbivores that damage rattan gardens (Indonesia)</li></ul>
<ul style="list-style-type: none"><li>• 30-50% ideal canopy for growth of rattan (Vietnam)</li></ul>
<ul style="list-style-type: none"><li>• Usually found in forest areas that have high humidity, secondary forests, shrubs, and available support trees for climbing rattan (<math>\pm 60\%</math>)</li></ul>
<ul style="list-style-type: none"><li>• Proper soil and location of sites for cultivated rattan</li></ul>



# SOCIO-ECOLOGICAL INDICATORS TO ENSURE SUSTAINABILITY AND QUALITY OF RATTAN



Harvest
<ul style="list-style-type: none"><li>• Identification of rattan reserves</li></ul>
<ul style="list-style-type: none"><li>• Harvest less than 80% of harvestable rattan. Mature rattan is often at a length longer than 5 meters.</li></ul>
<ul style="list-style-type: none"><li>• Ready for harvest – some leaves are yellow and dried up; most petals of lower leaves have fallen off, are blackish brown, usually scattered under the stem; part of stem which has been opened is dark green</li></ul>
<ul style="list-style-type: none"><li>• During rainy season harvest – cover stumps of cut stems to prevent water from entering the plant</li></ul>
<ul style="list-style-type: none"><li>• Lesser exploitation of rattan in steep areas or eroded riverbanks</li></ul>
<ul style="list-style-type: none"><li>• Protect support trees for rattan to climb on when they start to grow longer</li></ul>

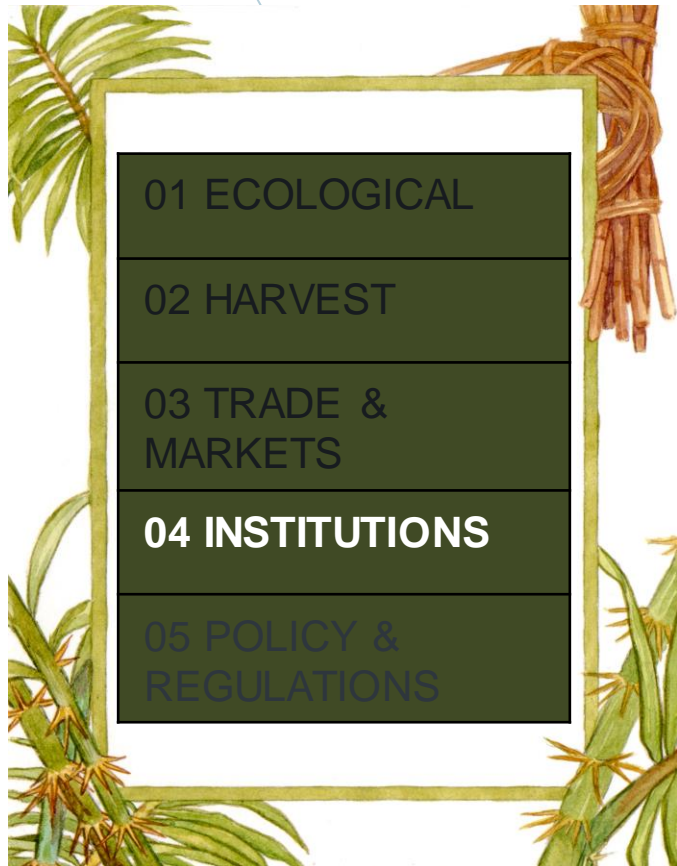
# SOCIO-ECOLOGICAL INDICATORS TO ENSURE SUSTAINABILITY AND QUALITY OF RATTAN



## Trade and Markets

- Standard system has been set and is available
- There is available and transparent information sharing in the value chain
- There are market or regulatory incentives for sustainable rattan management

# SOCIO-ECOLOGICAL INDICATORS TO ENSURE SUSTAINABILITY AND QUALITY OF RATTAN



01 ECOLOGICAL

02 HARVEST

03 TRADE &  
MARKETS

**04 INSTITUTIONS**

05 POLICY &  
REGULATIONS

## Institutions

- Participatory planning and assessment
- Participatory regulation development
- Monitor harvest records and rattan management plans to ensure feedback mechanism or synergies among stakeholders

# SOCIO-ECOLOGICAL INDICATORS TO ENSURE SUSTAINABILITY AND QUALITY OF RATTAN



## Policies and regulations

- Policies are in place to protect rattan gardens and forests
- Community participation is present in rattan harvesting
- Ban on rattan export policy being reviewed
- Monitor policies affecting rattan (trade and export, tenure, etc.)

## Recommendations

- **SHORTER SUPPLY CHAINS** and **LOCAL LEVEL RATTAN MANUFACTURING INDUSTRIES** to increase incentives

- **STRATEGY on RATTAN DEVELOPMENT** to guide the development of the industry across sectors

- **POLITICAL SUPPORT** from the government (local/national) to stimulate local farmers to keep and manage their rattan garden and village forests

- **REMOVE/RELAX POLICIES** that effectively lower farm gate prices of rattan harvest

- **RATTAN GARDENS** for city green spaces

- **STRENGTHEN FOREST PROTECTION** for rattan growing



# OTHER INITIATIVES AND PROGRAMS



- First trials of PGS in the forestry sector
- First trials of PGS in the forestry sector for international trade to other countries outside the region (Europe)

## Participatory Guarantee System (PGS) for rattan



PGS  
*Rotan Lestari (ROLES)/*  
Sustainable Rattan

Participatory Guarantee System (PGS) “Participatory Guarantee Systems are locally focused quality assurance systems. They certify producers based on active participation of stakeholders and are built on a foundation of trust, social networks and knowledge exchange”. (IFOAM, 2008)



The Forest Harvest is a collective mark that aims to highlight the forest source and sustainability of products coming from community forestry groups.

It covers all non-timber forest products that are harvested from the forests, whether from the wild or already domesticated sources.

## OTHER INITIATIVES AND PROGRAMS



# The Forest Harvest Collective Mark



## Quality

Products meet safety and market standards.



## Sustainability

Products are harvested in sustainable manner.



## Traceability

Products are harvested from sustainably community-managed forests.



FHCM VIDEO



# Thank you!

[www.ntfp.org](http://www.ntfp.org)

[info@ntfp.org](mailto:info@ntfp.org)

