



How citizen science could contribute to building resilient communities

- Recent experiences from Japan -

Setsuko Saya

Director, International Cooperation, Disaster Management Bureau

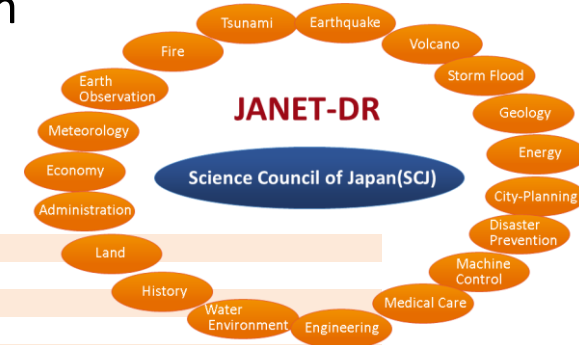
Cabinet Office

15 January 2019

- Citizen science plays a vital role in building resilient communities.
- To leverage this impact;
 - Science and technology societies have to change their language for better communication with citizens.
 - Activities in communities have to be integrated into policy framework with the government, in particular, with municipality government.
 - Citizen science needs to be reviewed, updated and coordinated, complementing with latest development of science and technology.

Network of academic societies related to disaster prevention and mitigation, and disaster recovery in cooperation with Science Council of Japan

56 Academic societies join JANET



Architectural Institute of Japan
Association for Children's Environment
Atomic Energy Society of Japan
Geographic Information Systems Association of Japan
Geological Society of Japan
Institute of Social Safety Science
Japan Association of Nursing Academies
Japan Association for Earthquake Engineering
Japan Association for Fire Science and Engineering
Japan Association for Planning and Public Management
Japan Association for Quaternary Research
Japan Association for Wind Engineering
Japan Cartographers Association
Japan Concrete Institute
Japan Emergency Management Association
Japan Geoscience Union
Japan Society for Disaster Information Studies
Japan Society for Disaster Recovery and Revitalization
Japan Society for Natural Disaster Science
Japan Society for Safety Engineering
Japan Society of Civil Engineers
Japan Society of Dam Engineers
Japan Society of Disaster Nursing
Japan Society of Engineering Geology
Japan Society of Erosion Control Engineering
Japan Society of Material Cycles and Waste Management
Japan Society on Water Environment
Japanese Association for Acute Medicine

Japanese Geomorphological Union
Japanese Institute of Landscape Architecture
Japanese Society of Public Health
Palaeontological Society of Japan
The Association of Japanese Geographers
The City Planning Institute of Japan
The Japan Association for Regional Economic Studies
The Japan Landslide Society
The Japan Petroleum Institute
The Japan Society of Mechanical Engineers
The Japan Sociological Society
The Japanese Association of Safety Education
The Japanese Forest Society
The Japanese Geotechnical Society
The Japanese Society for Active Fault Studies
The Japanese Society of Irrigation, Drainage and Rural Engineering
The Japanese Society of Revegetation Technology
The Meteorological Society of Japan
The Oceanographic Society of Japan
The Remote Sensing Society of Japan
The Robotics Society of Japan
The Seismological Society of Japan
The Society of Environmental Instrumentation Control and Automation
The Society of Heating, Air-Conditioning and Sanitary Engineers of Japan
The Society of Instrument and Control Engineers
The Volcanological Society of Japan
Transdisciplinary Federation of Science and Technology

The Kumamoto earthquake (14 and 16 April 2016)

18 April 2016, Joint press conference.
02 May 2016, "Urgent report meeting"
16 July 2016, "Three-month report meeting"
15 April 2017, "One-year report meeting"
in Kumamoto Prefectural Office



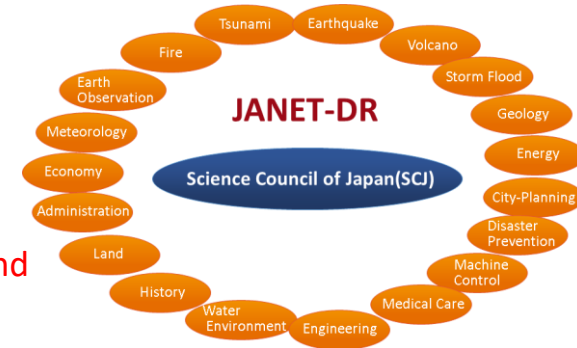
"Kumamoto earthquake/ One-year report meeting" in Kumamoto Prefectural Office on 15 April 2017

Torrential Rain in Western Japan (July 2018)

22 July
Joint press conference
Announced "Messages for citizens and society for caring against heavy rains"

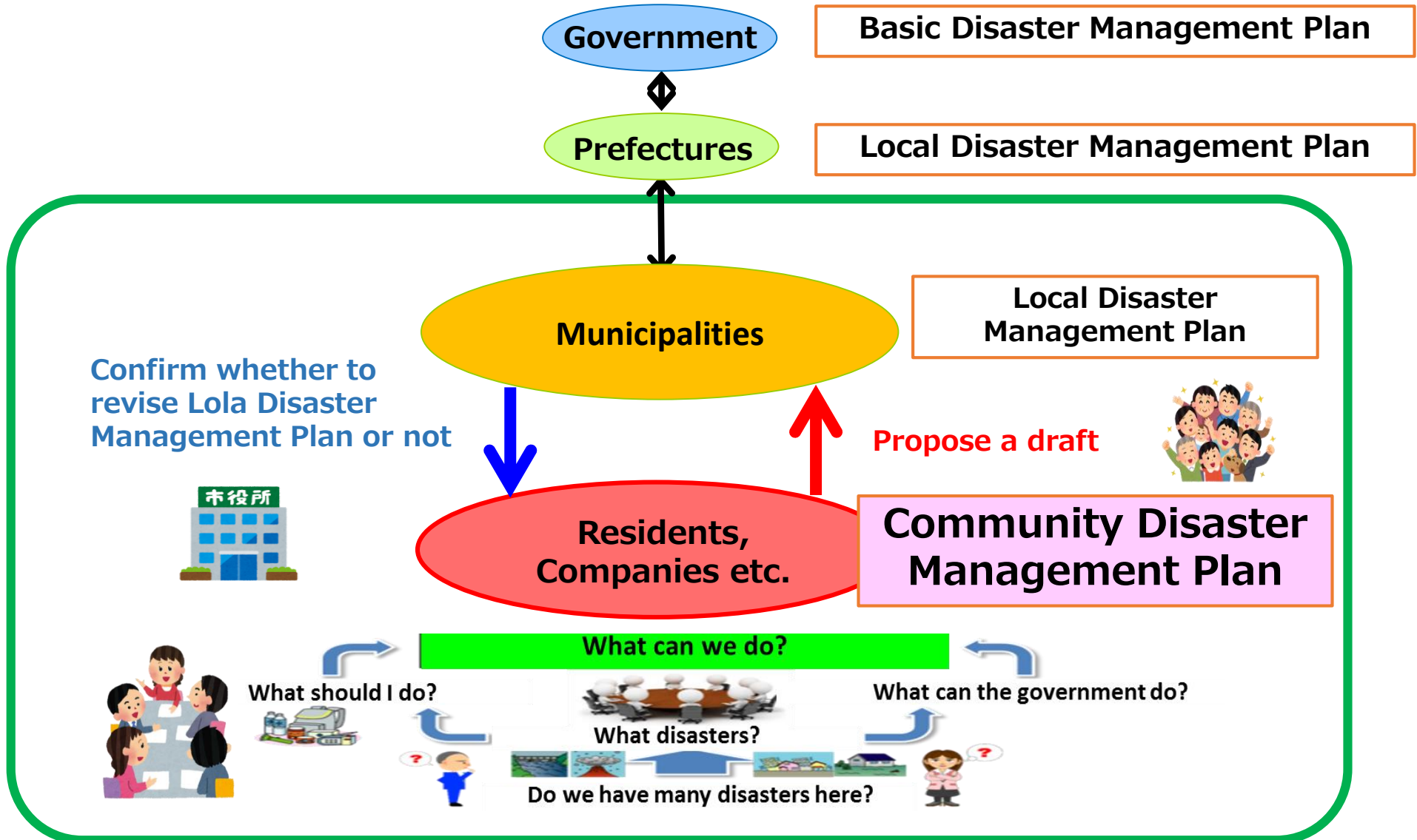


More than 40 reporters of major newspapers and magazines and NHK TV gathered to the announcement meeting

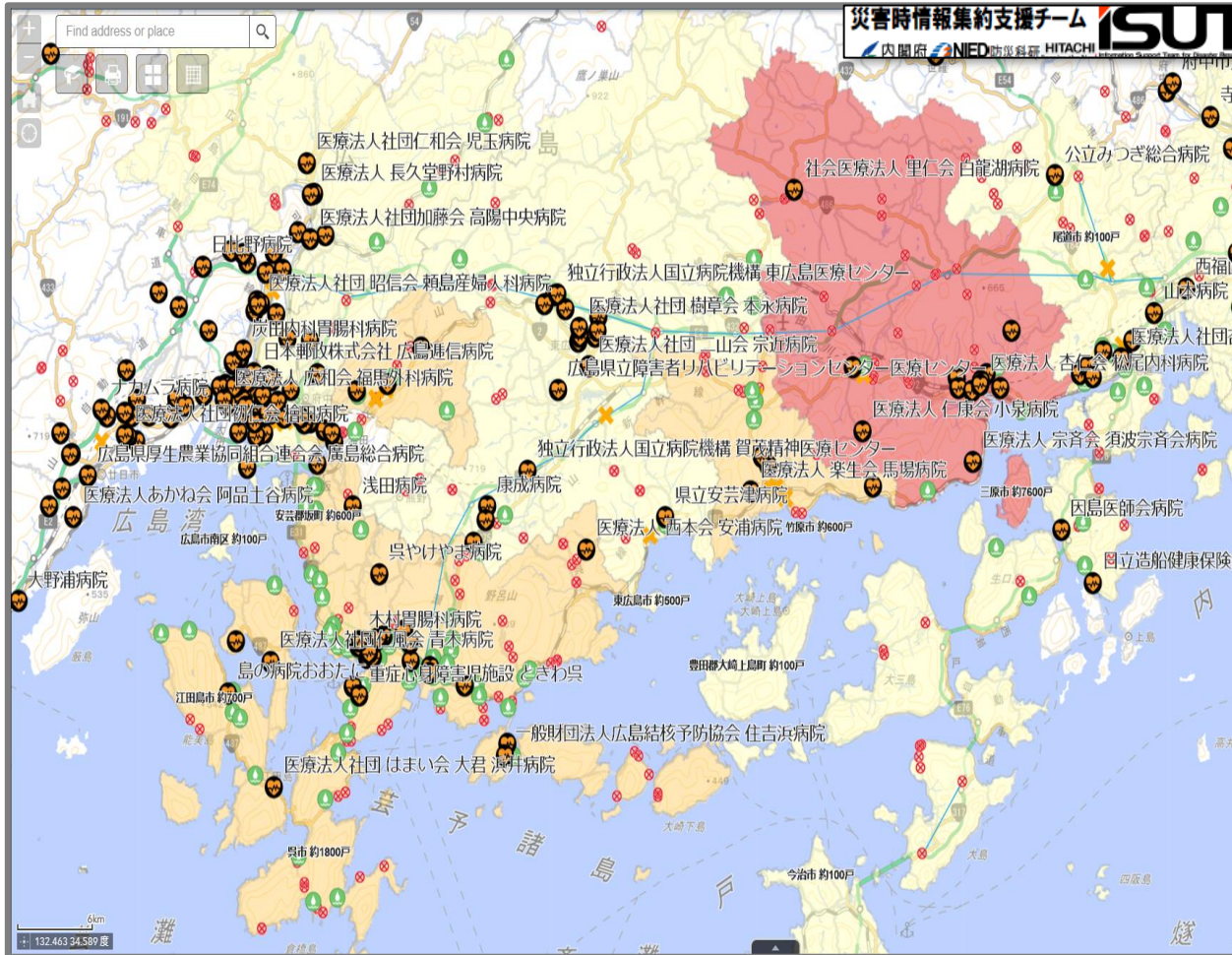


Message 2: Community Disaster Management Plan

Established in 2014 in the amendment of Basic Act on Disaster Management.
More than 2700 communities are active in developing their plans.



Information Support Team for disaster risk reduction (Torrential Rain in Western Japan, July 2018)



Hospitals(DMAT,7/7)



Water (7/9 11:00)



Blackout(中国電力,7/8 17:00)

BLACKOUT

- > 5,000 - 7,600
- > 2,500 - 5,000
- > 500 - 2,500
- 100 - 500

Interruption of road traffic(広島県,随時更新)



Thank you!



Cover page:

Poster competition winners for Minister Awards (educational programme for kids)

http://www.bousai.go.jp/kaigirep/hakusho/pdf/H30_hakusho_english.pdf