

# Smarter Cities

Rick Robinson

Executive Architect, IBM

Member, Academy of Urbanism

[rick\\_robinson@uk.ibm.com](mailto:rick_robinson@uk.ibm.com)

[@dr\\_rick](https://twitter.com/dr_rick)

<http://theurbantechnologist.com/>

<http://ibm.com/smartercities/>

Analysis of bus movements in Dublin

<http://www-03.ibm.com/press/us/en/pressrelease/41068.wss>

Droplet smartphone payment service

<https://dropletpay.com>

Pedestrian roundabout in Shanghai, China, by Chris UK

<http://www.flickr.com/photos/chrisuk/7580861928/>

3D printer by Media Lab Prado

<http://www.flickr.com/photos/medialab-prado/5839088528/>





Photo of the digital screen in “The Place”, Beijing, China by Trey Ratcliff  
<http://www.stuckincustoms.com/2011/12/11/the-digital-aurora-borealis/>



Photo of Dhaka, Bangladesh by Joisey Showa  
<http://www.flickr.com/photos/joiseyshowaa/2402764792/>



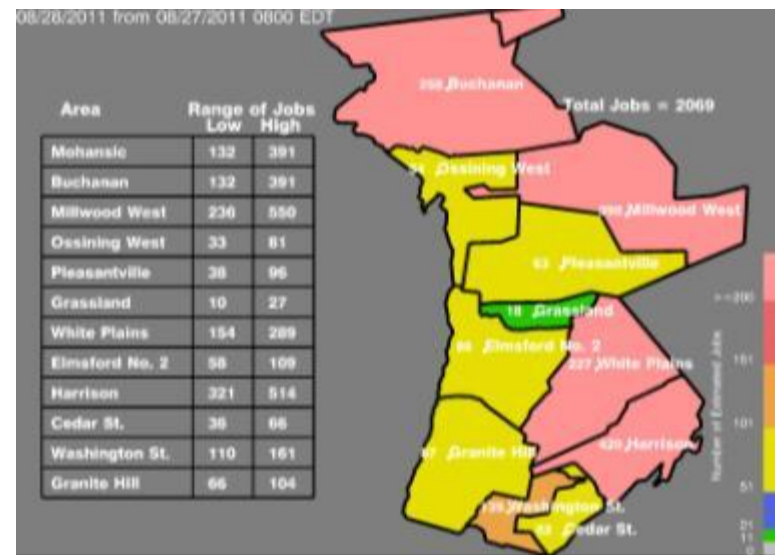
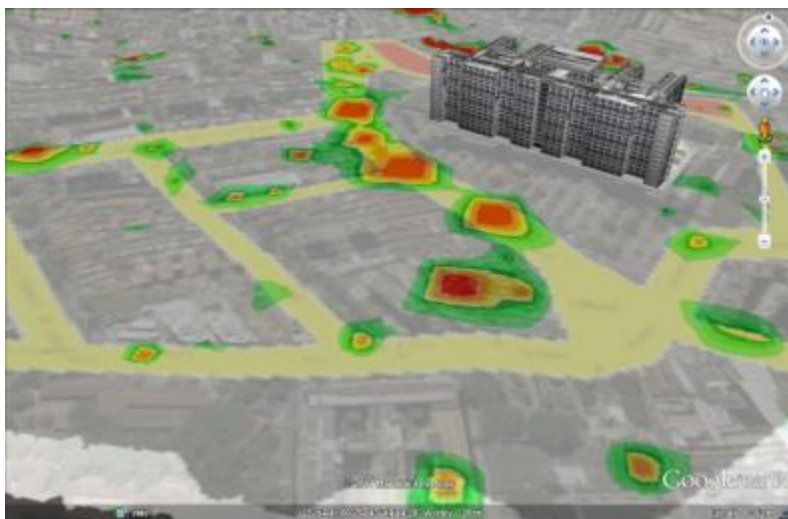
The IBM Watson Computer: <http://www.ibm.com/innovation/us/watson/index.html>



3D printed prosthetic leg by Bespoke Innovations  
<http://www.bespokeinnovations.com/content/gallery>

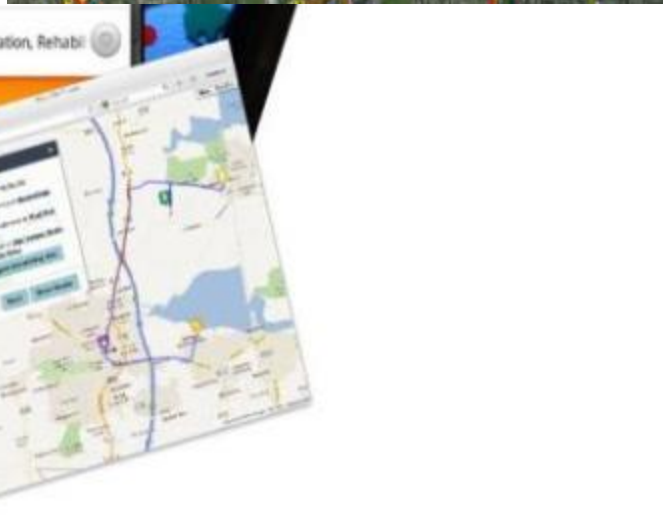
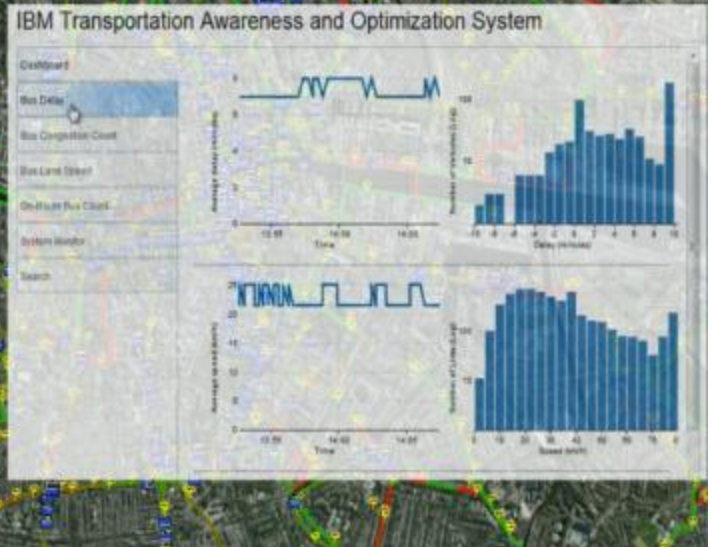


Images captured by MRI scan by Shinji Nishimoto, Alex G. Huth, An Vu and Jack L. Gallant, UC Berkley, 2011  
<https://sites.google.com/site/gallantlabucb/publications/nishimoto-et-al-2011>

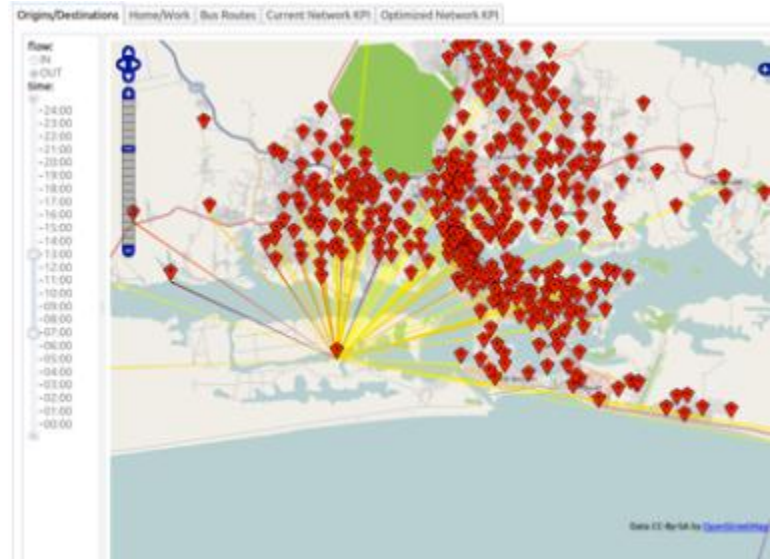
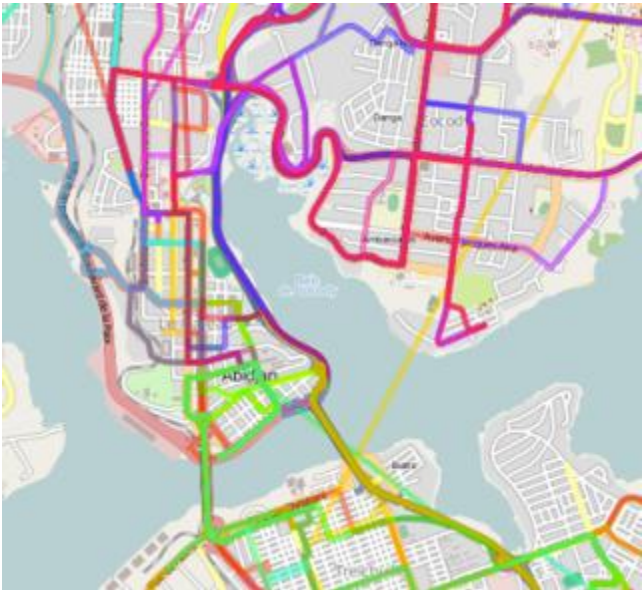


<http://www.smartercomputingblog.com/smarter-computing/smarter-cities-rio/>  
<http://www-03.ibm.com/ibm/history/ibm100/us/en/icons/deepthunder/>





# Abidjan, Côte d'Ivoire







Play Fitness: <http://www.playfitness.co.uk/>



Sunderland Software City:  
<http://cities-today.com/2013/03/sunderlands-software-centre-gets-ibm-backing/>



The "Container City" social enterprise incubation centre run by Sustainable Enterprise

Strategies:

<http://www.ses.coop/>



Sunderland Civic Centre by Paul Boxley

<http://www.flickr.com/photos/paulboxley/241434422/>

Lydia's House: <http://www.trillo.org.uk/>







On Sale



*Avocado*  
KES 2500 per KGs bag



*Cooking Bananas*  
KES 800 per KG



*Potatoes shangi*  
KES 4200 per kg bag

M-Farm:  
<http://www.mfarm.co.ke/>

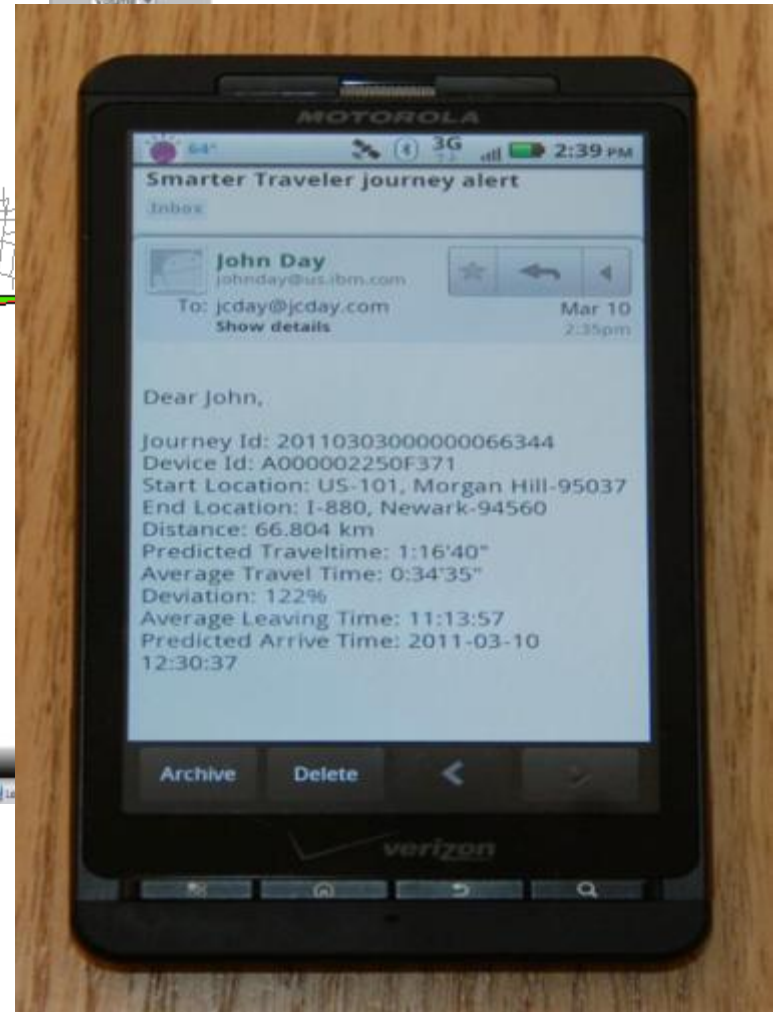
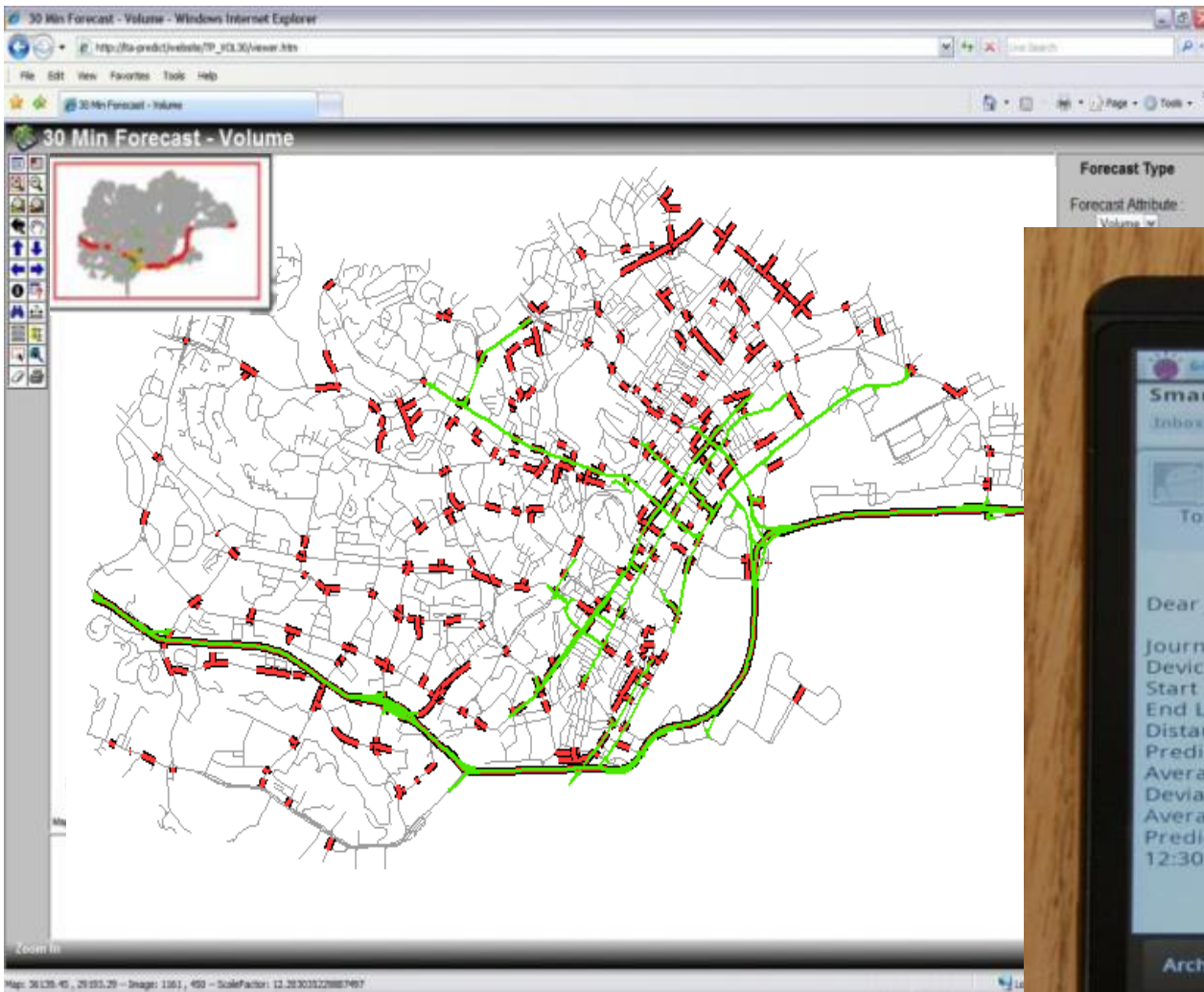
# Kilimo Salama



Kilimo Salama:  
<http://www.syngentafoundation.org/index.cfm?pageID=562>



SMS forLife:  
<http://malaria.novartis.com/innovati/on/sms-for-life/index.shtml>



Traffic prediction in Singapore and California:

<http://www.smartplanet.com/blog/business-brains/predictive-analytics-at-work-predicting-traffic-jams-before-they-occur/10543>

<http://www-03.ibm.com/press/us/en/pressrelease/21971.wss>



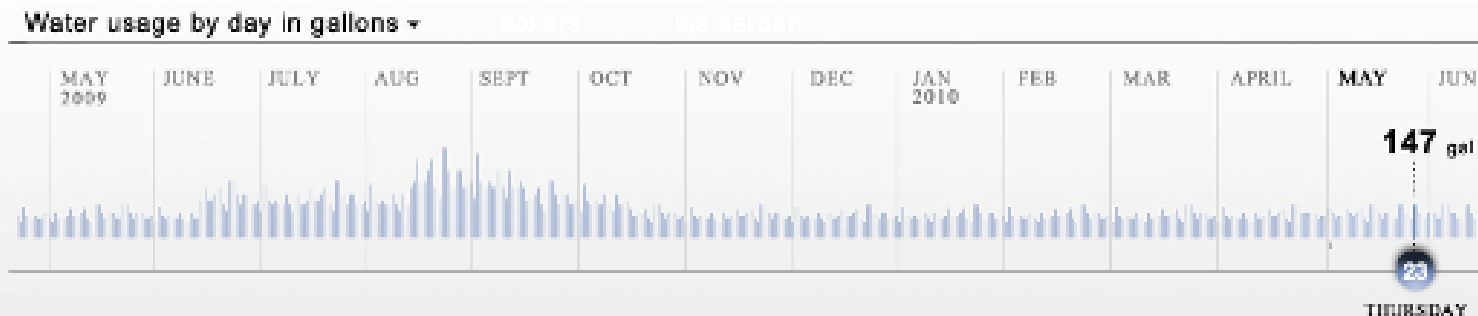
Sustainability report for the  
**Wasserman**  
household

Usage trend  
**12.51%**  
reduction

Estimated savings  
**45**  
gallons

Green points  
**176**  
points

Water usage by day in gallons ▾

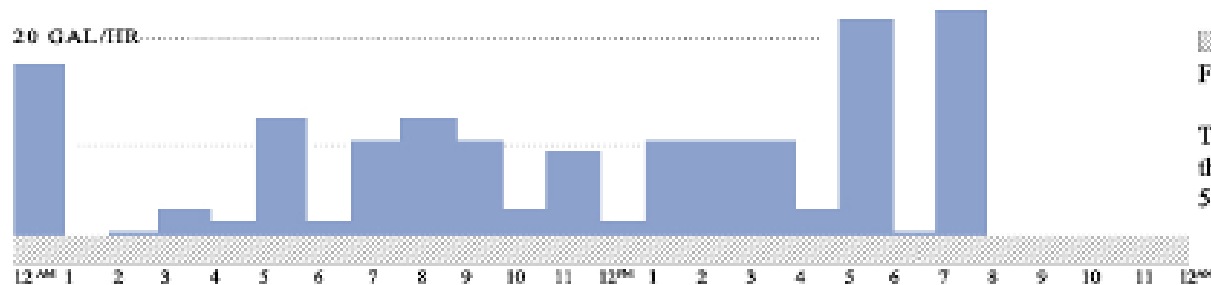


Hourly breakdown

Weekly usage

This week's usage

20 GAL/HR



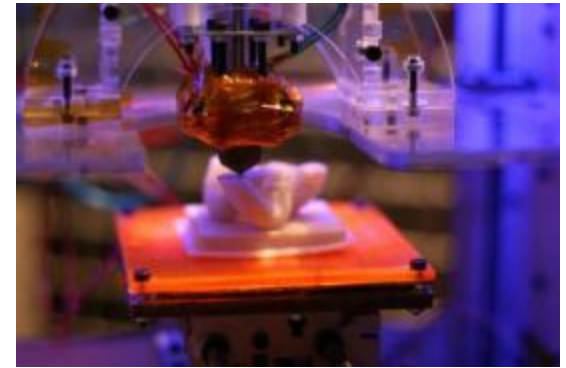
Potential leak: 2 gals/hr  
First detected: 5/19/2010

To report, click [here](#) or call  
the water department at  
589-4291.



Photo of Stories of Mumbai by BMW Guggenheim Lab  
<http://www.flickr.com/photos/bmwguggenheimlab/8359294952/>





# Thankyou

Rick Robinson

Executive Architect, IBM

Member, Academy of Urbanism

[rick\\_robinson@uk.ibm.com](mailto:rick_robinson@uk.ibm.com)

[@dr\\_rick](https://twitter.com/dr_rick)

<http://theurbantechnologist.com/>

<http://ibm.com/smartercities/>

Analysis of bus movements in Dublin

<http://www-03.ibm.com/press/us/en/pressrelease/41068.wss>

Droplet smartphone payment service

<https://dropletpay.com>

Pedestrian roundabout in Shanghai, China, by Chris UK

<http://www.flickr.com/photos/chrisuk/7580861928/>

3D printer by Media Lab Prado

<http://www.flickr.com/photos/medialab-prado/5839088528/>

