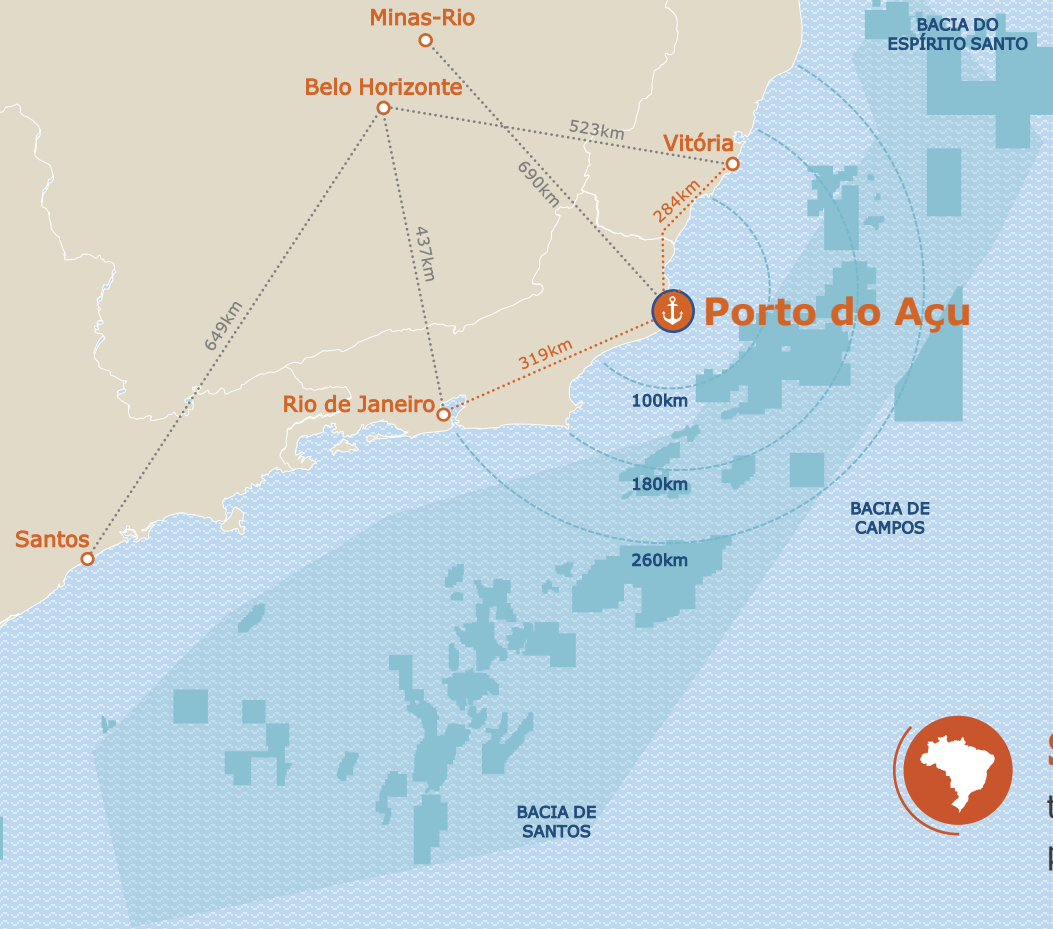




RISK & RESILIENCE

Collaborative Approach





Strategic location



Southeast Region

the most productive and populated region of the country



Next to the main O&G fields in Brazil



WORLD-CLASS PORT INFRASTRUCTURE



56 Mtons

Cargo handling in 2021
(+3% vs. 2020)



10

private terminals
(1/3 of Rio de
Janeiro TUPs)



17km

of quayside with
high expansion
capacity



VTS

First port in the country to
implement VTS
(Vessel Traffic System),
for cutting-edge navigation



90km²

of retro area for
industrial development
(equivalent to 1.5x the
Island of Manhattan, NY)



**Safety &
Security**



Integrity



Efficiency



Sustainability



Collaboration



**LOCAL MARITIME
COMMUNITY**



The worst oil spill in Brazilian history and one of the largest environmental disasters ever recorded (2019)



- **Unknown** source
- The country faced huge challenges to **respond adequately** and **mitigate damages**
- Characteristics of the oil (very degraded)
 - resources and procedures available proved not to be effective or adequate
- **Lack of guidance** for clean-up activities by volunteers – in the first days, local communities engaged in the response with poor alignment with the national contingency plan

Emergency Preparedness Project



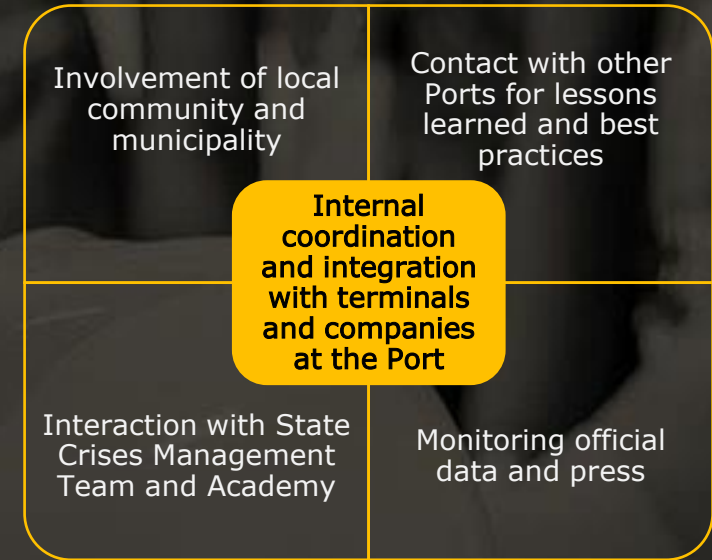
The Port Administration set up a Project to define strategy, priorities and lines of action to deal with the incident at the Port area

Internal coordination

- Integration between terminals and internal stakeholders
- Best response strategies / Integration with companies at the Port
- Internal Reports

External relations

- Monitoring official data, academic publications and press
- Integration with State and local government
- Contact with other Ports in Brazilian Coast
- Local community engagement



- Priorities to the emergency response:
1. People
 2. Environment
 3. Continuity of Port's operations

The project in numbers



10

Companies



14

Municipalities



62 km
of beaches
monitored daily



> 1,500
PPE mobilized



90
fishermen



2 clean-up drills
and 1 integrated
exercise



WPSP
WORLD PORTS SUSTAINABILITY PROGRAM



SAFETY AND SECURITY

WINNER 2020

Port of Açu
Emergency Preparedness



**INTERNATIONAL
TASKFORCE**



WPSP Covid-19 Task Force

- The task force is an initiative of IAPH **World Ports Sustainability Program (WPSP)** created to keep the **maritime and port industry informed** about the main impacts of coronavirus in ports worldwide and to help them handle the challenges imposed by Covid-19 outbreak through a **guidance on current best practices, recommendations and regularly updated information.**
- Group of multidisciplinary port experts. Chair: **Tessa Major (Porto do Açú, Brazil)**



Port Guidance Document

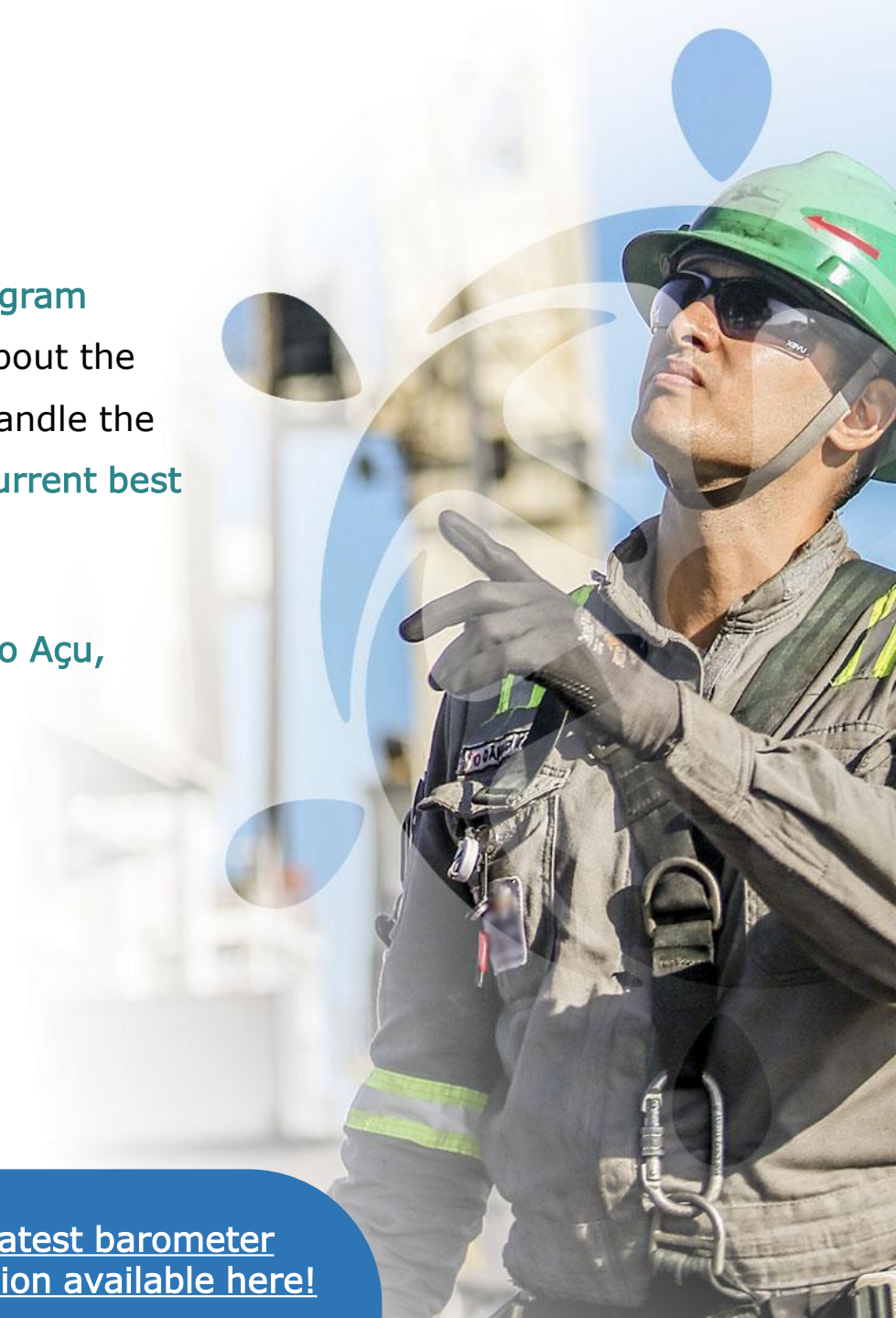


- Port Operations
- Governance
- Communication
- Humanitarian actions
- Business and Finances
- Support to customers and stakeholders
- Back to work planning



DOCUMENT

[Latest barometer edition available here!](#)





Port Economic Impact Barometer

Monitoring of port trends gathering weekly inputs from ports of all regions:

- Impact on vessel calls
- Extra restrictions on vessels
- Port call procedures and potential delays
- Impact on hinterland transport
- Warehousing and distribution activities

Data compiled and analysed by **Theo Notteboom** (Shanghai Maritime University, Ghent University and University of Antwerp) and **Thanos Pallis** (University of the Aegean and Universidad de Los Andes)

Extensive port collaboration enabled full and continuous overview of covid-19 impact on ports





**LONG TERM PORT
COLLABORATION**



IAPH Risk & Resilience Committee

- As covid-19 proved, the world scenario is **constantly changing**. The port sector must **manage and mitigate their risks** through a **proactive** approach to ensure **business continuity**, as ports are essential nodes in international logistics and trade
- **Risk & Resilience Committee:** Guidance, knowledge exchange and understanding of the global status
 - Acceleration through **active collaboration** and co-creation
 - Fortify **dynamic knowledge sharing**
 - Robustness of thinking through understanding of **different views and approaches**
 - **Connect** to larger network of IAPH





Initial proposal – from where to start

Topic	Focus/purpose
Business continuity policy and risk preparedness	Assist ports with business continuity policy
	Sharing best practices in a structured way
	Status of risk resilience in ports
	Determine longer-term agenda for the Committee
COVID-19	Monitoring economic impact
Dangerous goods	Work with World Bank on regulation and good practices (linked to root causes Beirut case)
Extreme weather	Work with PIANC on follow-up survey Navigating a Changing Climate
Anti-corruption	Work with Maritime Anti-Corruption Network in producing a Port Integrity index

Açu Experience
Discover the port in the
palm of your hand



THANK YOU!

Felipe Mendonça de Oliveira
*Business Development and Market
Intelligence Manager*
felipe.oliveira@portodoacu.com.br

