

LAO PDR.



THE GEOGRAPHICAL INDICATIONS IN LAO PDR.



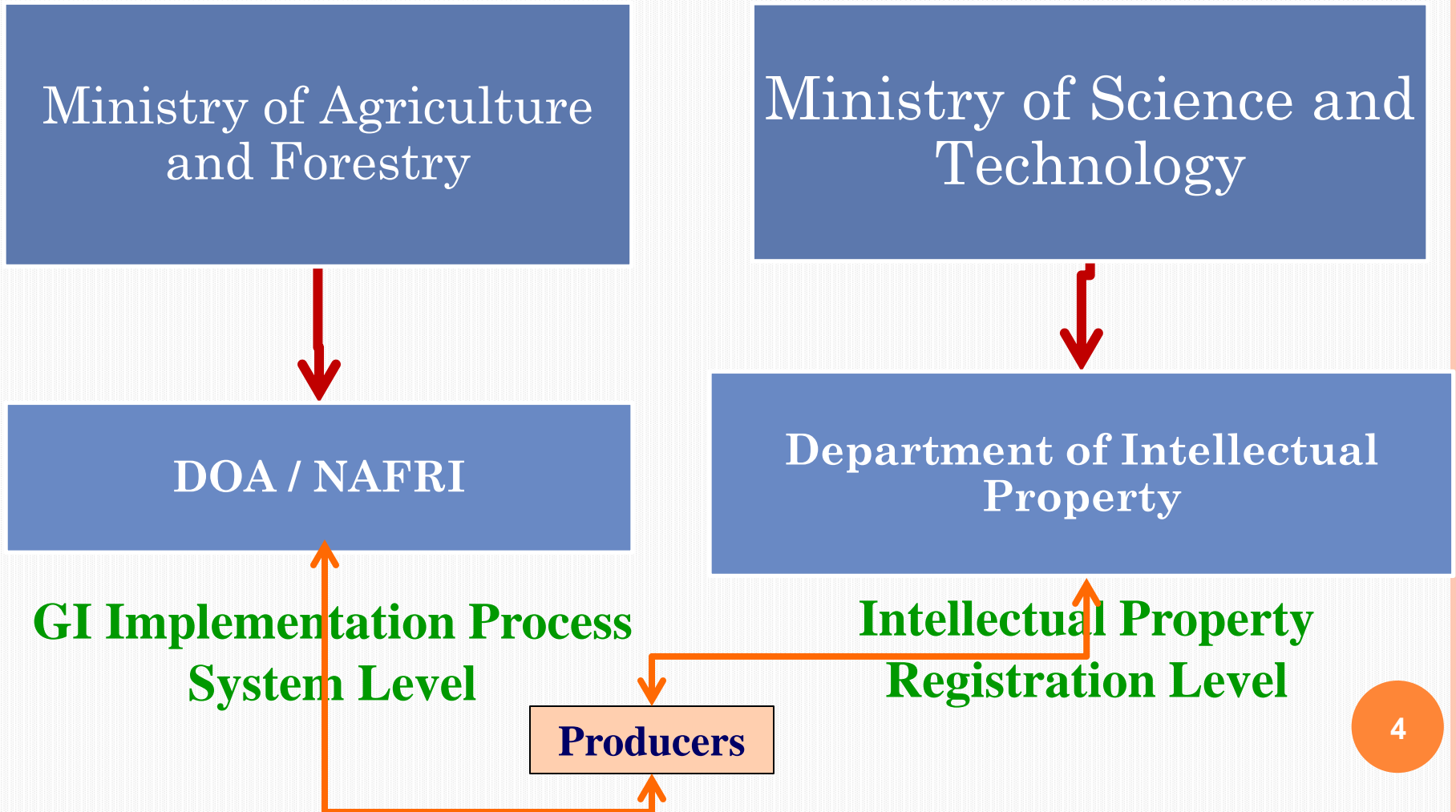
Dr. Khanlasy KEOBOUNPHANH

**Director General of Intellectual Property Department,
Ministry of Science and Technology.**

THE GEOGRAPHICAL INDICATIONS IN LAO PDR.

- ❖ **Organizational Chart**
- ❖ **Lao IP Law**
- ❖ **Progress Status**
- ❖ **Development Strategies**
- ❖ **Agricultural Development**
- ❖ **Priority Task**
- ❖ **Challenges**
- ❖ **Requirement**

Organizational Chart related to GIs in Lao PDR.



Lao IP Law

Ministry of Science and Technology

- ❖ IP Law was firstly promulgated in 2007.
- ❖ The Law was amended in 2011.
- ❖ The Ministerial Decision on the Implementation of the IP Law concerning GIs was issued in late 2012.

National Legislative Framework

- ❖ Agricultural Law (No. 01/98 NA, Promulgated by National Assembly on 10 October 1998,). This Law is now is being improved / review process.
- ❖ Law on Intellectual Property (No. 01/NA, Dated 20 December 2011).
- ❖ Ministerial Decision on the Implementation of the Law on Intellectual Property concerning Geographical Indications, No.757/MOST dated 20 September 2012.
- ❖ The Act. 18 of IP Law stimulates that in order to obtain a geographical indication certificate, an indication shall meet all the following requirements:
 1. the indication identifies a good as originating in a particular geographical country or territory, or a region or locality in that territory;
 2. a given quality, reputation or other characteristic of the good is essentially attributable to its geographical origin.

Progress Status

Central Level

- ❖ Documents relates to GIs registration (application, manual, etc.) have been drafted and are pending finalization.
- ❖ Ministerial Decision on the Establishment of a National Committee for GIs (August 2014), it is composed of members from related ministries and key private organizations. The mandate of the Committee is being drafted.
- ❖ 19 local specialty products have been considered as potential for Geographical Indications registration.

Local Level

- ❖ Feasibility studies have been conducted for five local specialty products (coffee, sticky rice, silk, tea and river algae).
- ❖ Organization of producers' group/association have been established (e.g Boloven Plateau coffee).
- ❖ 2 GI pilots products were selected: Boloven Plateau coffee from Champasak Province and Small Chicken rice (aromatic sticky rice) from Xieng khouang and Houaphan Provinces.

Development Strategies

- ❖ FAO/AFD Regional Project on the Promotion of Rural Development Through Development of Geographical Indications.
 - Support the development of GIs system in preparing and registering two GIs pilot products: Boloven Plateau coffee and Khao Kai Noi sticky rice ('small chicken rice').
- ❖ ADB Loan Project on Enhancing SME's Export through Geographical Indications.
 - Support the enhancement of SME's export through development of GIs system focuses on silk and tea products.
- ❖ Strengthening coordination between concerned ministries and stakeholders related to GIs to ensure the registration of two GIs pilot products (Boloven Plateau coffee and Khao Kai Noi sticky rice).
- ❖ Providing broader information dissemination and raising awareness about GIs for key farmers/producers, stakeholders and public sector at both central and local level.
- ❖ Promoting Lao GIs into regional and international markets.
- ❖ Point out to farmers/producers of GIs factors on how it plays an important business role for both present and future of Lao traditional and add value to their products.
- ❖ Feasibility studies and site survey to collect information on potential GIs products.

Agricultural Development in Lao PDR

ແຜນທີ່ ສ ບ ປ ລາວ

MAP of LAO PDR



Lao PDR area: 236,800 km²

Population : 6.51 million
(In 2012);

Cultivated land covers about 2 million ha (5%), rice is occupying 60-70%

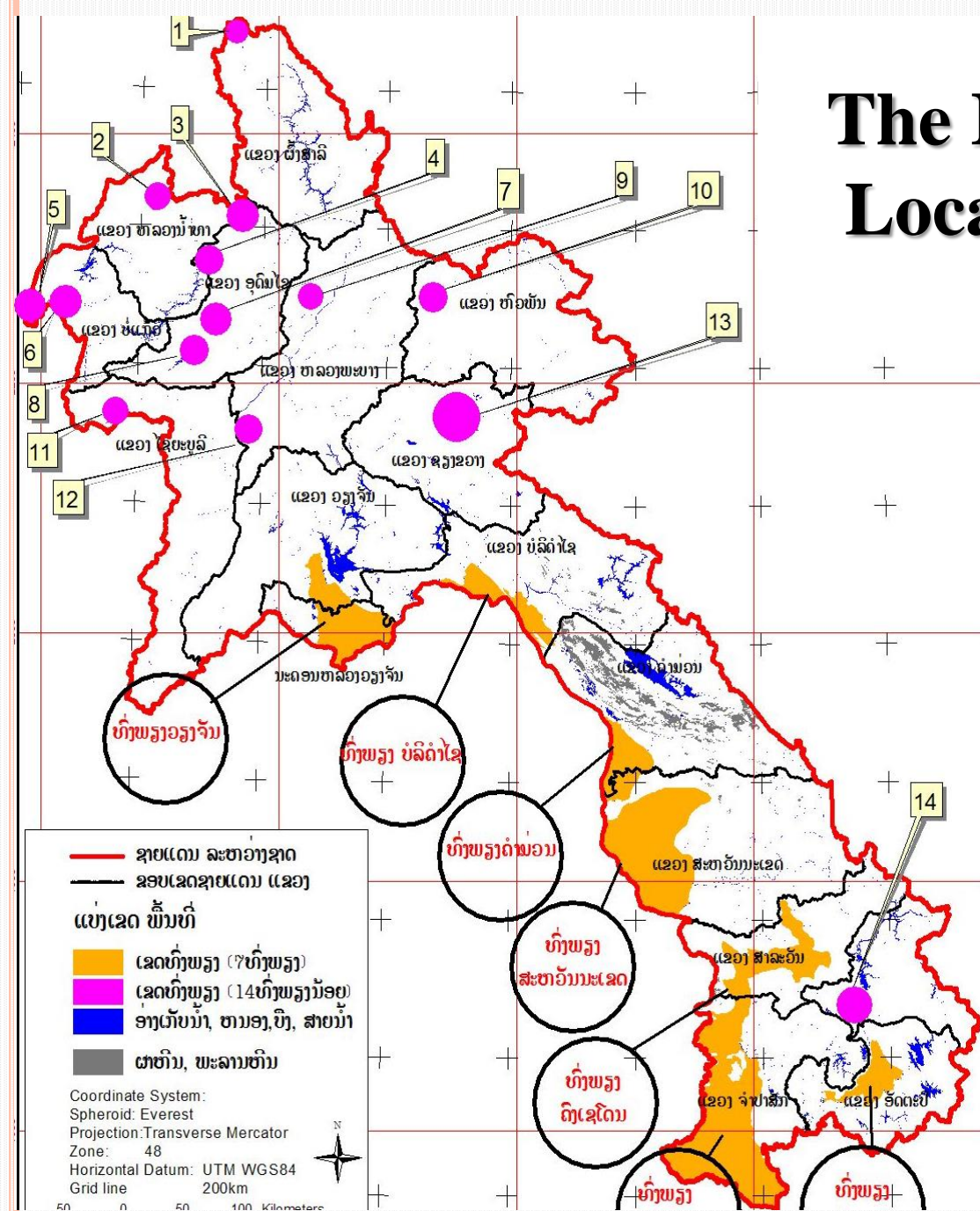
- Maize
- Cassava
- Fruit and Vegetable

The Potential Crops for GI Registration

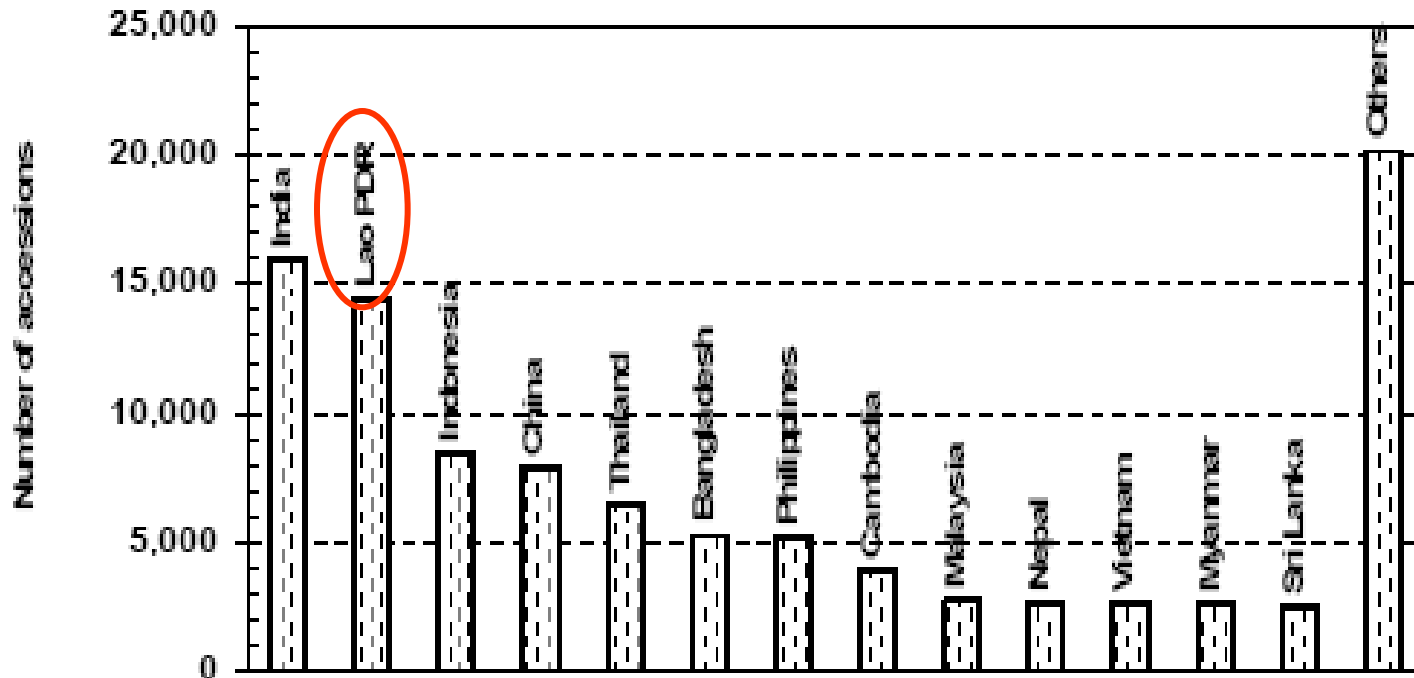
1. Rice
2. Coffee
3. Maize
4. Bean
5. Cassava
6. Vegetables
7. Fruits



The Indigenous Crops Located in Lao PDR.



ORIGIN OF THE GERMPLASM IN THE INTERNATIONAL RICE GENE BANK



Source: IRRI. 2005 *Genetic Resources*. Los Baños: IRRI.

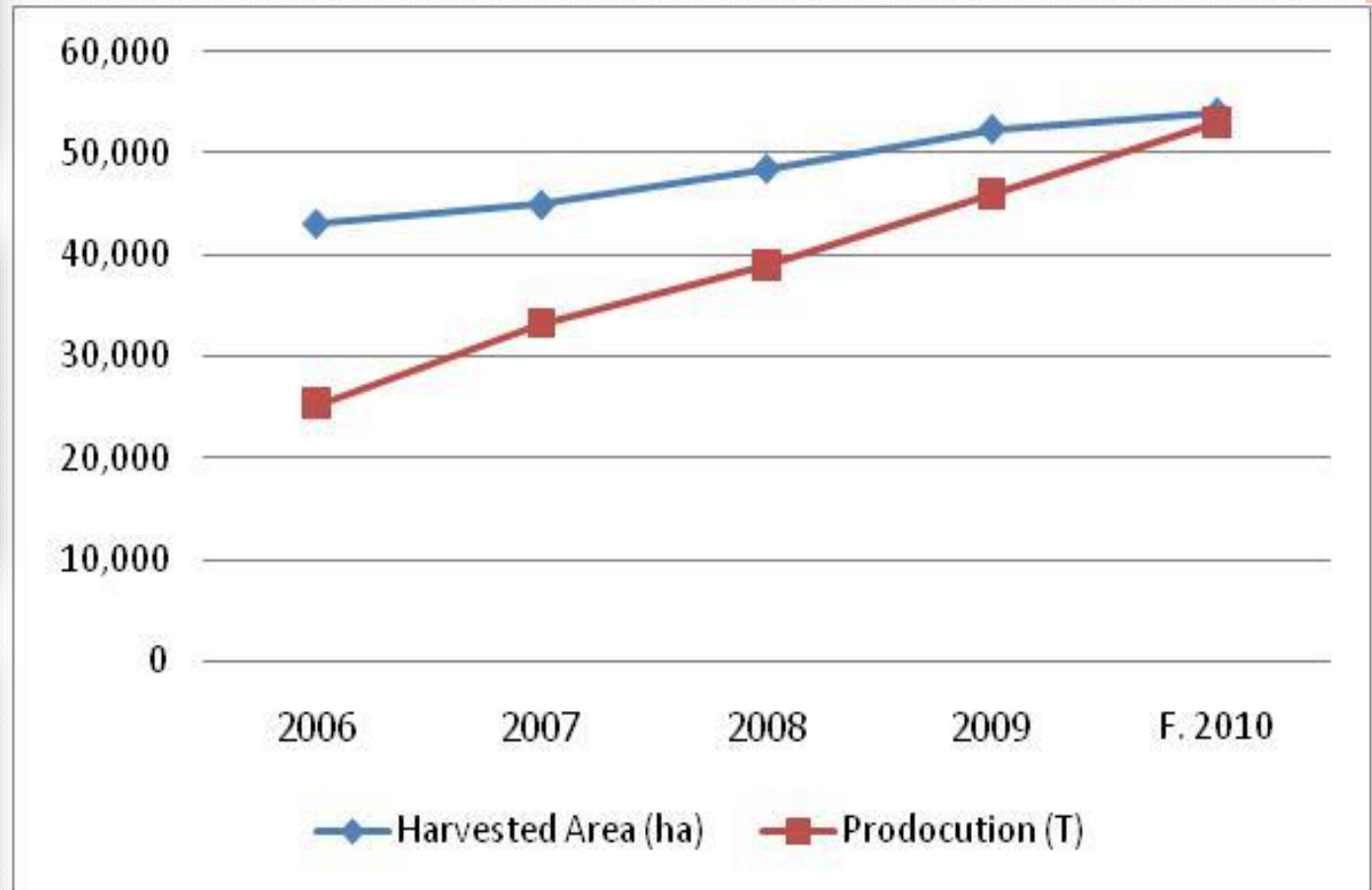
Small Chicken Rice Variety "Kainoi"



**“Khao Niew Hom”
Black Rice Variety
Foundation Seed**



Potential GI Coffee Grown Statistics



POTATOES

- Germplasm Collection 22 , Characterization and Evaluation for Use (16 Varieties)



Potential GI Products

Lao Silk



Tea



Sticky rice



River algae



Bolaven Coffee

Priority Task

- ❖ Finalizing all necessary GIs registration related documents (applications, manual, etc.).
- ❖ Starting to receive GIs applications and registration of GIs.
- ❖ Strengthening the administrative and institutional capacity of competent authorities.
- ❖ Setting up quality standard, quality control and certification system for GIs.
- ❖ Conducting survey and collect data of potential GIs products.
- ❖ Setting up infrastructure.
- ❖ Featuring to farmers of the GIs factors reflect both present and future in promoting traditional and adding value to their products.

Challenges

- Lack of experiences and expertise on GIs among the relevant administrations and competent authorities .
- Lack of awareness and knowledge on GIs among key stakeholders and producers group/ associations.
- Lack of human resources.
- Inadequate fund for capacity building of relevant administrations and competent authorities.
- Establishment of GIs producers' group/associations.
- Budget constraint for supporting the activities on GIs.
- Lack of system infrastructure.

REQUIREMENT

Priority Needs

- ❖ Needs Assessment:
 - More assistance, cooperation and exchange of experiences with international organizations and other countries to improve the GIs system in our country.

- ❖ Require Adequate fund to achieve the following goals:
 - Finalizing all necessary GIs registration related documents (applications, manual, etc.).
 - Feasibility studies of potential GIs products.
 - Setting up GIs system infrastructure at Ministry level and to procure equipment as needed.
 - Strengthening capacity building of relevant administrations and competent authorities.
 - Establishment of GIs control and certification system.
 - Supporting the activities on GIs.

Questions



ຂອບໃຈ

KHOB JAI.

THANK YOU.