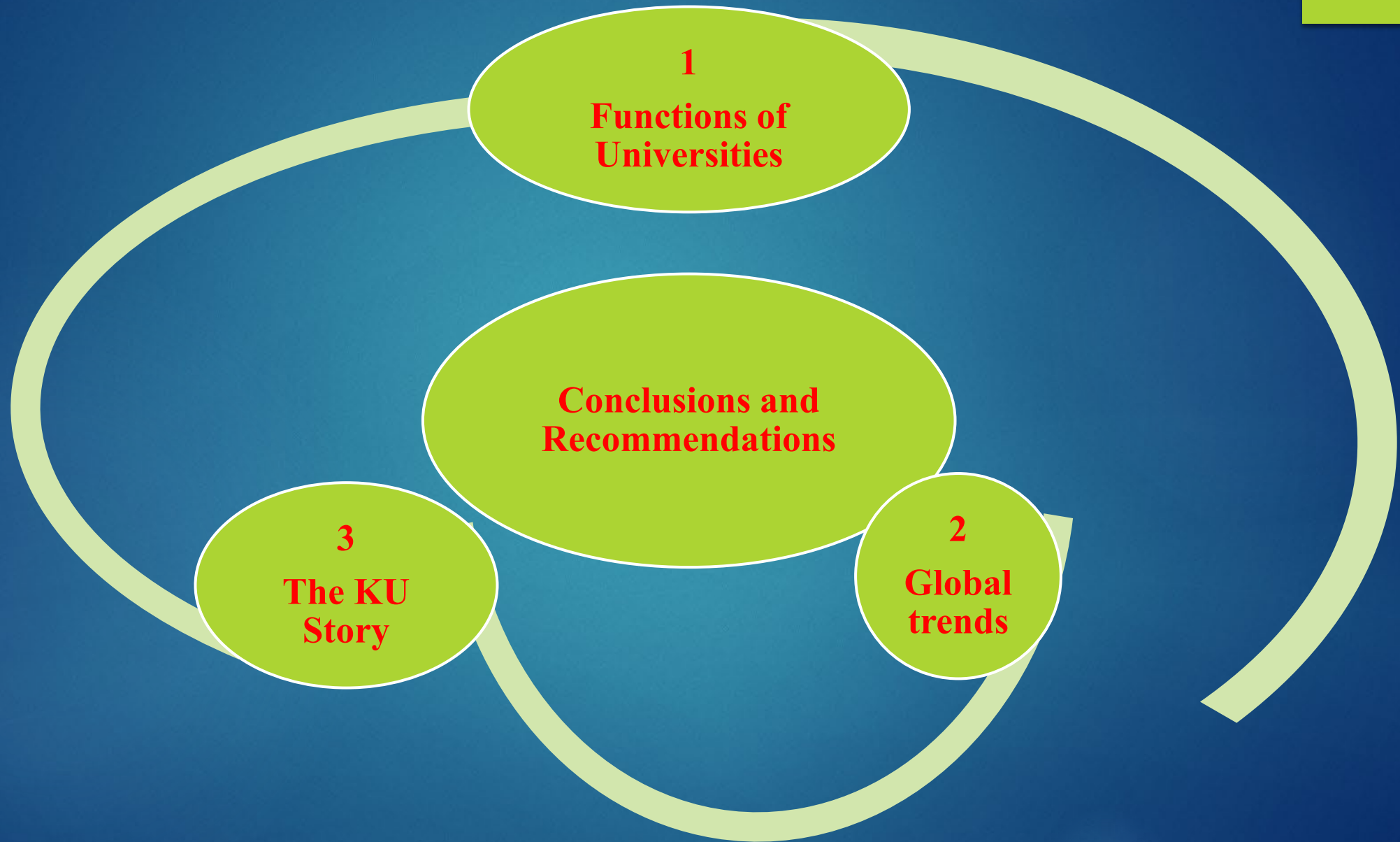


Linkages between Kenyatta University, Industrial Parks and Special Economic Zones



Prof. Vincent Onywera
AG. DVC (Research, Innovation & Outreach)
Kenyatta University

Presentation Outline



Objectives of university education



THE REPUBLIC OF KENYA

LAWS OF KENYA

UNIVERSITIES ACT

NO. 42 OF 2012

- a) advancement of knowledge through teaching, scholarly research and scientific investigation
- b)
- c)
- d) support and contribution to the realization of national economic and social development
- e)
- f)
- g) dissemination of the outcomes of the research conducted by the university to the general community
- h)
- i)
- j)
- k)

Stark Facts

Today, the **competitiveness** of a country depends on its **knowledge generation, acquisition capacity and Innovativeness**

Countries that are
knowledge driven hold the
balance of **power** and thus,
the advantage of **leading the
world**

Ranking of Selected Countries by Scientific Publication, 1996 - 2020

Rank	Country	Publications	Citations	H Index
1.	United States	13,817,725	384,398,099	2577
2.	China	7,454,602	78,201,759	1010
3	UK	4,039,729	102,878,206	1618
4	Germany	3,515,309	81,454,056	1429
7	India	2,128,896	22,218,913	691
35	South Africa	342,060	5,407,984	531
51	Nigeria	118,648	1,019,744	229
68	Kenya	44,575	941,327	283
79	Ghana	28,547	397,279	172
86	Uganda	22,379	452,993	198
87	Tanzania	22,226	436,160	191

Source: SCImago Journal & Country Rank

KENYA

VISION 2030

**TOWARDS A GLOBALLY COMPETITIVE
AND PROSPEROUS NATION**

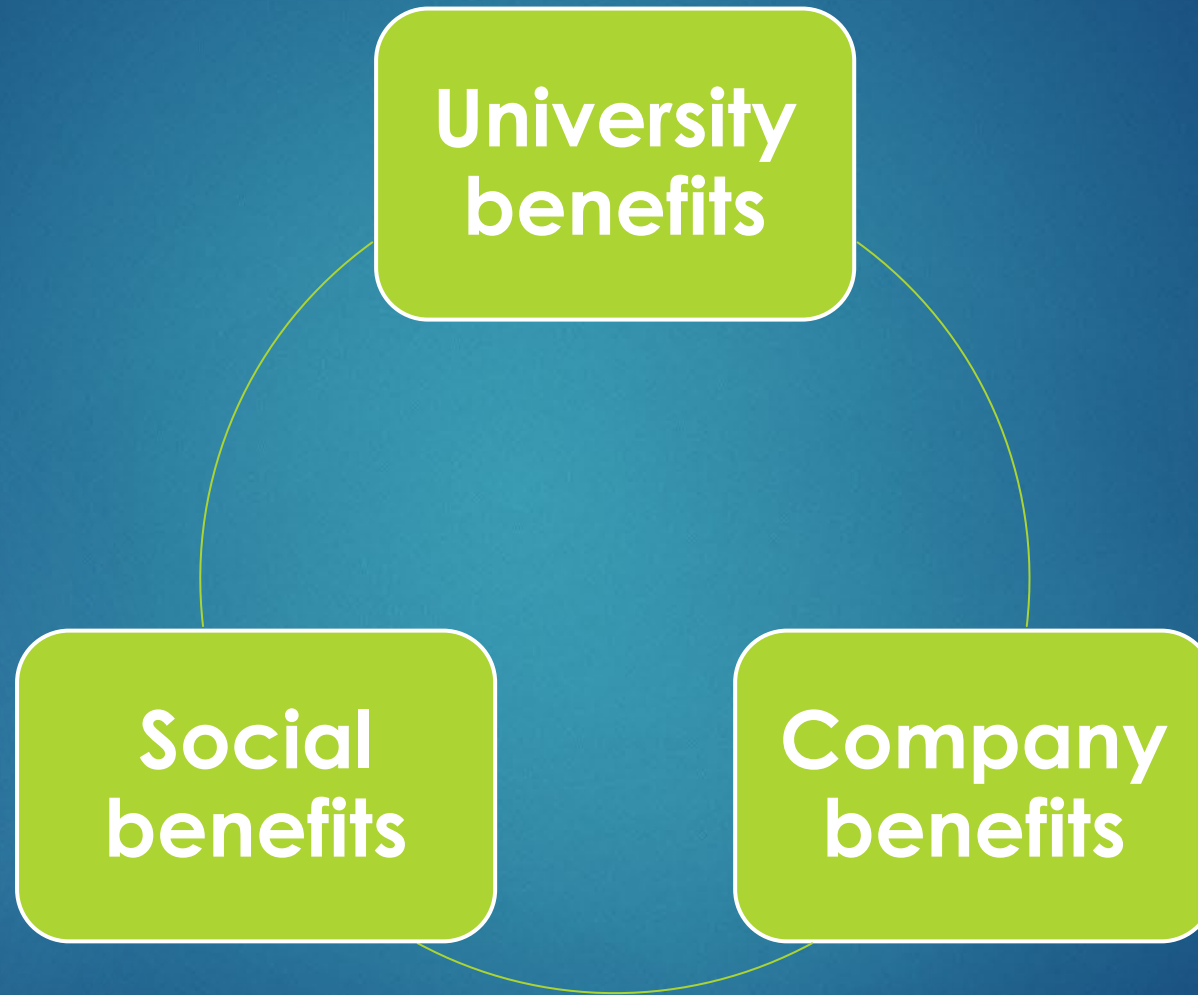


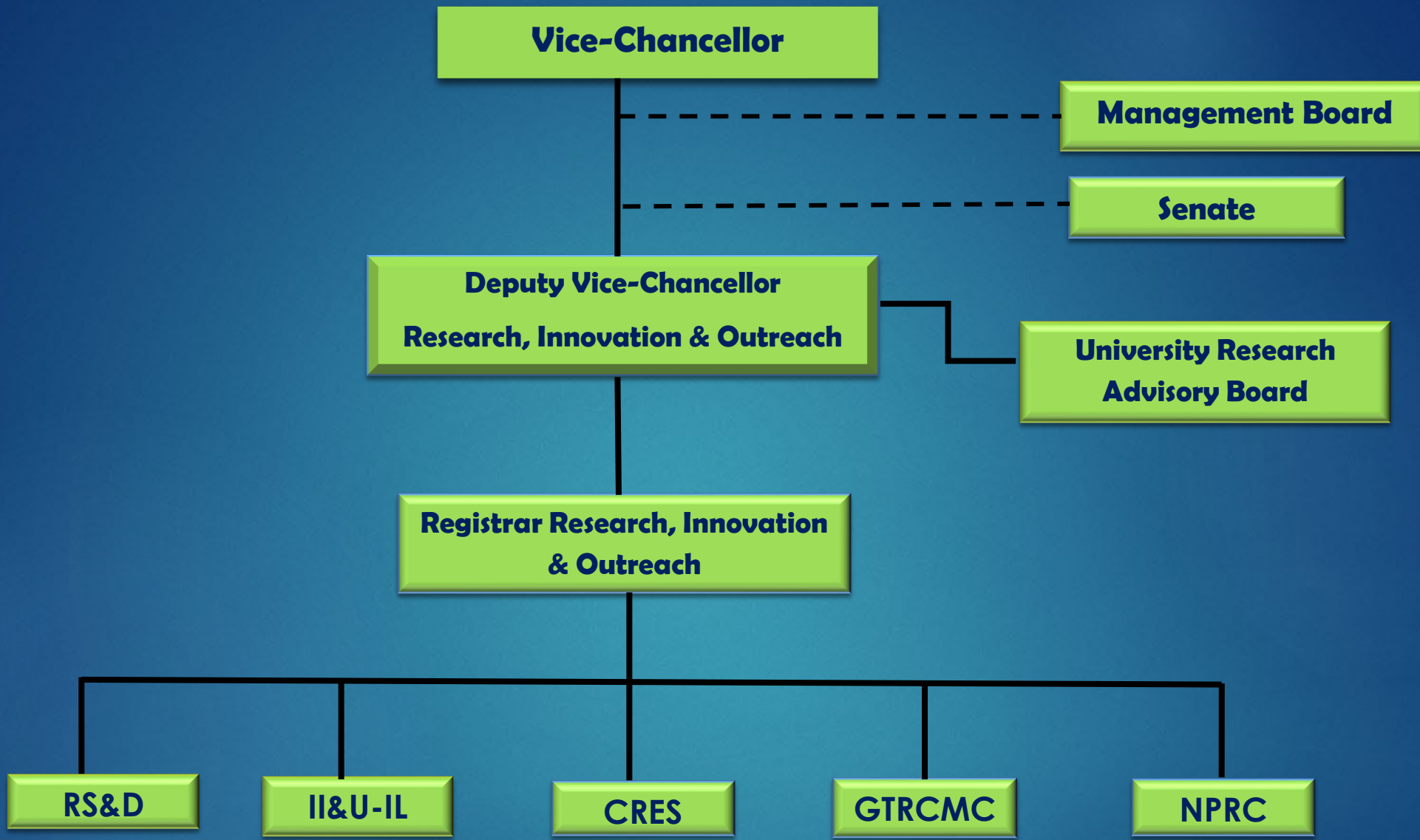
GLOBAL INNOVATION INDEX

Ranking	Economy	Score
1	Switzerland	65
2	Sweden	63.1
3	USA	61.3
4	UK	59.8
5	South Korea	59.3
8	Singapore	57.8
10	Germany	57.3
16	Canada	53.1
46	India	36.4
52	Mauritius	35.2
61	South Africa	32.7
80	Kenya	27.5
102	Rwanda	23.9
112	Ghana	22.3
119	Uganda	20.0

Source: <https://www.globalinnovationindex.org/analysis-indicator> 2021

Advantages of the Collaborative Relationships





- Key:**
- RS&D** - Research Support and Dissemination
 - II&UIL** - Innovation Incubation and University-Industry Linkages
 - CRES** - Centre for Research Ethics and Safety
 - KU-Ethics Review Committee
 - KU-Bio-Safety Committee
 - KU-Animal Care and Use Committee
 - NPRC** - National Phytotherapeutic Research Centre
 - GTRCMC** - Global Tourism Resilience and Crisis Management Centre



Directorate of Innovation Incubation and University-Industry Linkages

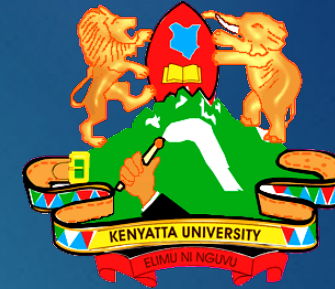
Innovations



TIBA Vent



Intelligent barrier system



Investor Conference, 2021
Innovators pitching their ideas
to prospective investors

Select Spin offs



FlexPay
Lipia Polepole

Say yes to a home makeover
#ReadyforMore

www.flexpay.co.ke

Flexpay Technologies is an automated layaway platform that enables customers afford essential goods and services from merchants and service providers while paying in piecemeal or flexible installments conveniently via mobile phones



FlexPay
Lipia Polepole

-  Choose what you like
- Split your purchase into easy payments 
-  Enjoy 0% interest with no surprises

#ReadyforMore www.flexpay.co.ke



AfricarTrack International is a fast growing leading global provider of GPS Tracking and Fleet Management Solutions based in Africa (Kenya, South Africa, Nigeria), Asia (Thailand) and Western Europe (Germany).



AfricarTrack International
Your security guaranteed



Insects are the Future

ecodudu.com



**Shamba Mix
Fortified Bio fertilizer**

Great for a variety of seedlings,
vegetables & transplants



Nourishment for stronger root health

30KGS

store in a cool dry place



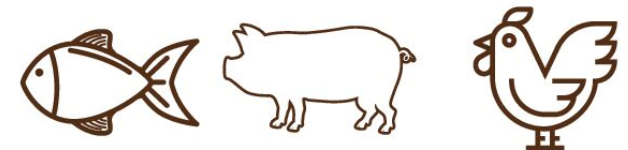
Dudumeal

Crude Protein
45%

Fat
36%

INSECT PROTEIN

Feed directly to animals or blend with existing feed



30KGS

store in a cool dry place



The national Centre facilitates further research and commercialization of research products and processes emanating from research institutions in the country



Solar Plant



- French Govt grant of Euro 350,000 for 100 kw pilot plant & Centre of Excellence in solar energy
- Urbasolar/KU collabo for 40 mw plant

- PVs with tracking system
- To produce power needs of KU & sell excess to national grid

Conclusions and Recommendations

Consolidate fragmented efforts

Promote result-oriented collaborative efforts



Engage partners outside our core lines of business

Scale up by pooling limited resources

