



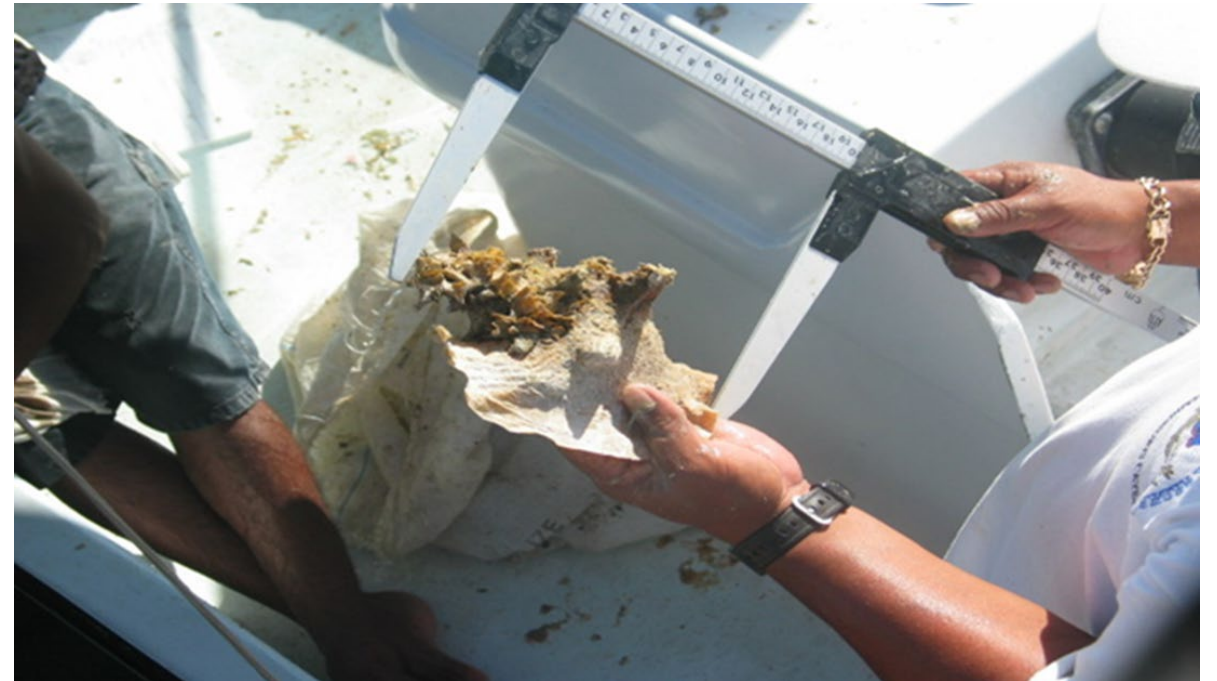
**Organisation of
Eastern Caribbean States**
UNCTAD-OECS Blue BioTrade project



Taking of queen conch morphometric data measurements

Queen conch shell length measurement

The conch shell length (measured from tip of the spire to end of the siphonal canal) is measured to the nearest millimeter using a caliper.



Taking of queen conch morphometric data measurements

Queen conch shell lip thickness measurement

The shell lip thickness (measured at the mid-lateral region on the lip side of the shell) is measured to the nearest 0.1 mm using a Vernier caliper



Measurement of queen conch shell lip thickness using a Vernier caliper



Thank you for your attention