

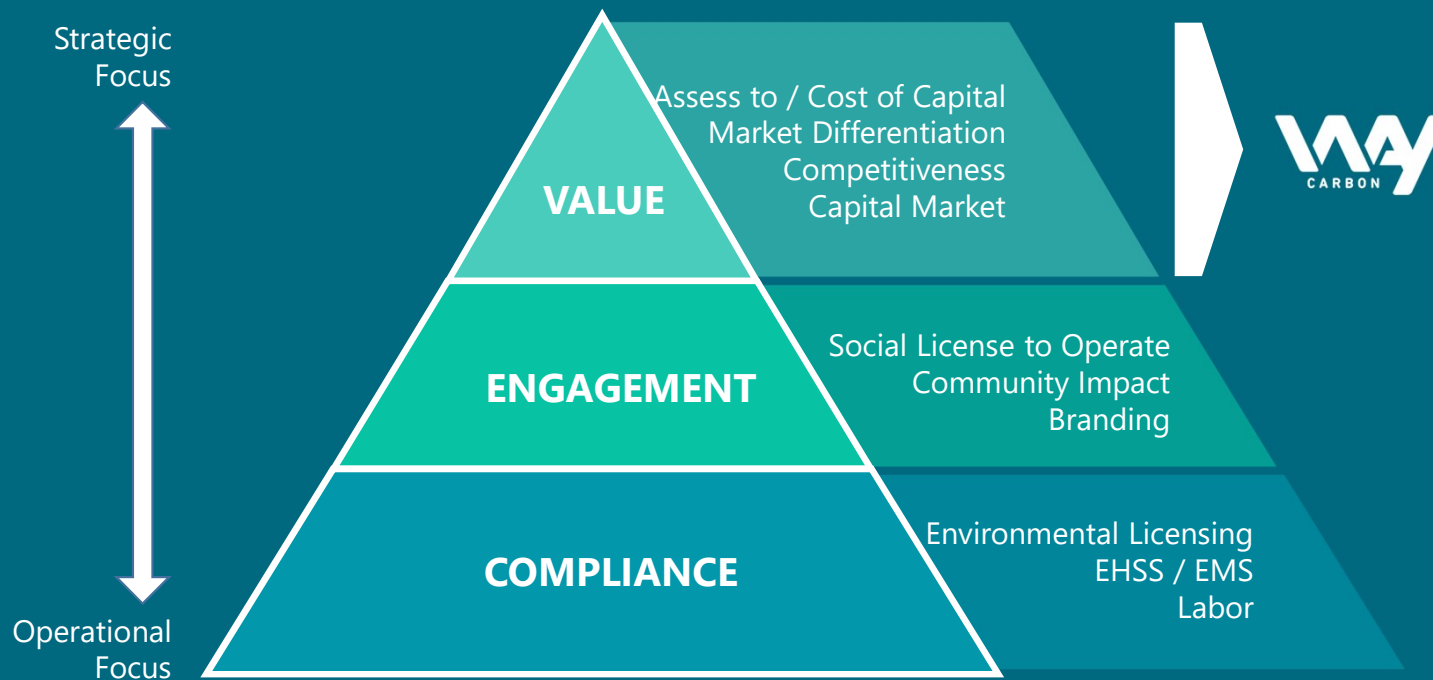
UNCOVERING THE SUSTAINABILITY VALUE TO BUSINESS.

WE WORK TO CATALYZE
THE TRANSITION TO A
LOW CARBON ECONOMY



International Meeting on Services Value-Added in Exports
Brasília | 22 -23 October 2019

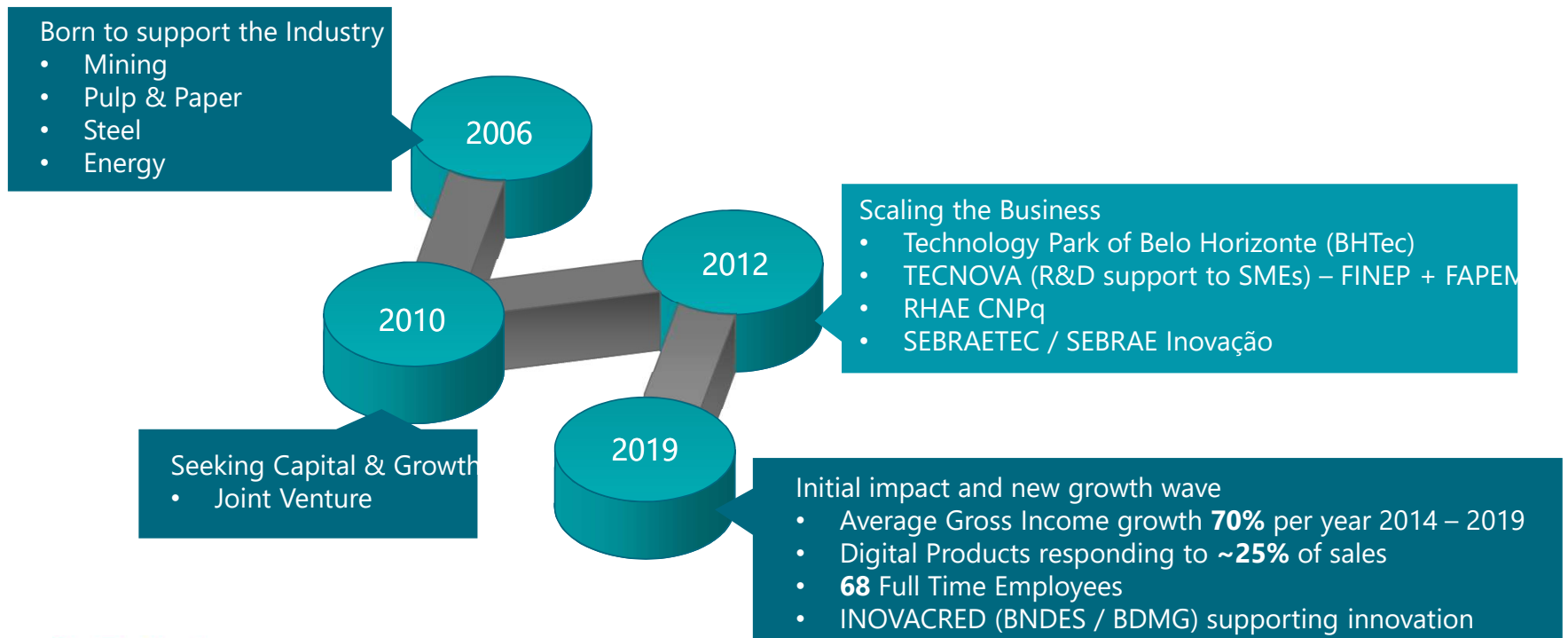
STRATEGIC VALUE BEYOND COMPLIANCE



OUR MARKET SEGMENT

- Public Companies (B3, NYSE, LSE)
- Foreign Capital (Debt)
- ESG Investments (Equity)
- Exporters

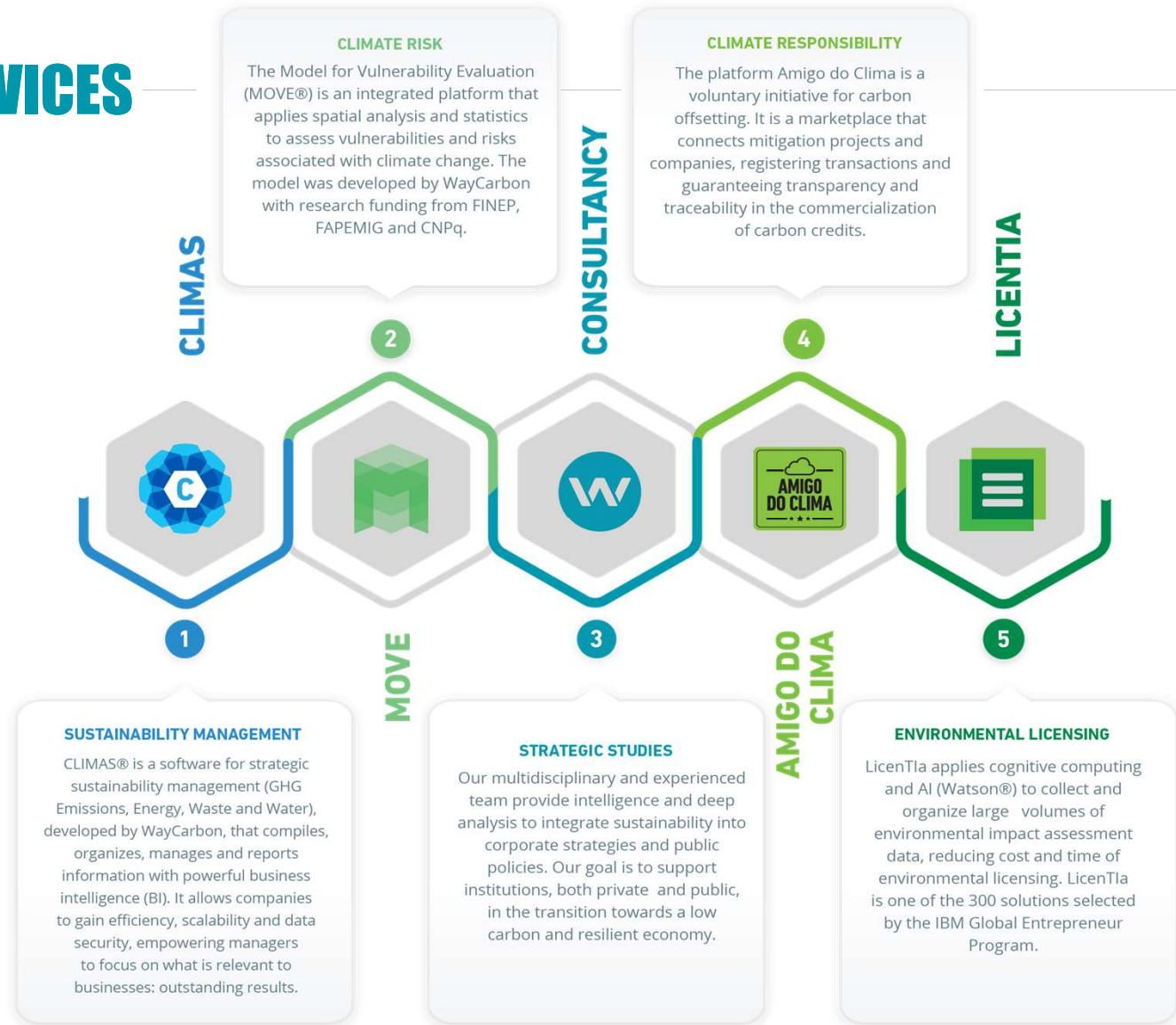
IMPACT OF R&D POLICIES IN BUILDING A TECH-BASED SME



Employing **knowledge** and **technology** to support our customers to overcome the challenges of **sustainability** in a **fast-changing** world.



PRODUCTS & SERVICES



EXPERIENCE & MARKET

Projects

+450



Since
2006

Clients
150

WAYCARBON'S SERVICES EXPORT

2019

DIRECT EXPORT: **25** OF YGR

"MODE-5" EXPORT: **30** OF YGR

SHARE BY SECTOR

- MINING | 27%
- STEEL | 15%
- AUTOMOTIVE | 12%
- CONSUMER GOODS | 11%
- AGRIBUSINESS | 8%
- PETROCHEMICAL | 4%
- OTHER 23% (AERONAUTICS, PULP & PAPER, OIL & GAS)

CLIMAS® USED IN **12**
MULTINATIONALS

COUNTRIES BY BRAZILIAN

Henrique Pereira | CEO

hpereira@waycarbon.com



Rua Paraíba, 1000 – 7ª floor - Savassi
31.130-141 – Belo Horizonte | MG
+55 31 3656 0501 | www.waycarbon.com

BH | SP | RJ



<https://twitter.com/waycarbon>



<https://www.instagram.com/WayCarbon/>



<https://www.linkedin.com/company/waycarbon/>