



UNCTAD Meeting

Brasília, 22nd and 23rd Oct 2019

Telecom/ICT Services and their impact

ROBERTO MITSUAKE HIRAYAMA
Regulation Specialist/Coordinator
ANATEL

Oct/2019



Telecom General
Law (Law n.
9.472/1997)

First Regulatory
Agency installed in
Brazil. We have
regional offices in
all Brazilian State
Capitals.

We are currently
around 1500 Civil
Servants

Mission
Regulate the telecom sector
contributing to the development
of Brazil

A large, white, three-dimensional sign for ANATEL is mounted on the exterior of a modern building with a glass facade. The sign features the word 'ANATEL' in large, green, block letters. To the right of 'ANATEL', the full name 'Agência Nacional de Telecomunicações' is written in smaller, green, sans-serif letters. The sign is set against a background of a building with a grid of windows reflecting the sky.

ANATEL
Agência Nacional
de Telecomunicações

SDGs: ANATEL's Actions ITU participation and Anatel's Reg. Agenda



Source: <http://www.itu.int/en/action/climate/Pages/ITU-in-the-UN-Environmental-Agenda.aspx>

- ITU takes an active role in promoting and addressing the Sustainable Development Goals (SDGs) through the use of ICTs.
- ITU addresses, for example:
 - Goal 7: Affordable and Clean Energy;
 - Goal 12: Responsible Production and Consumption;
 - Goal 13: Climate action;
- Through the United for Smart Sustainable Cities (U4SSC) initiative, ITU also commits to attaining Goal 11: Sustainable Cities and Communities.

Connect 2030 Agenda

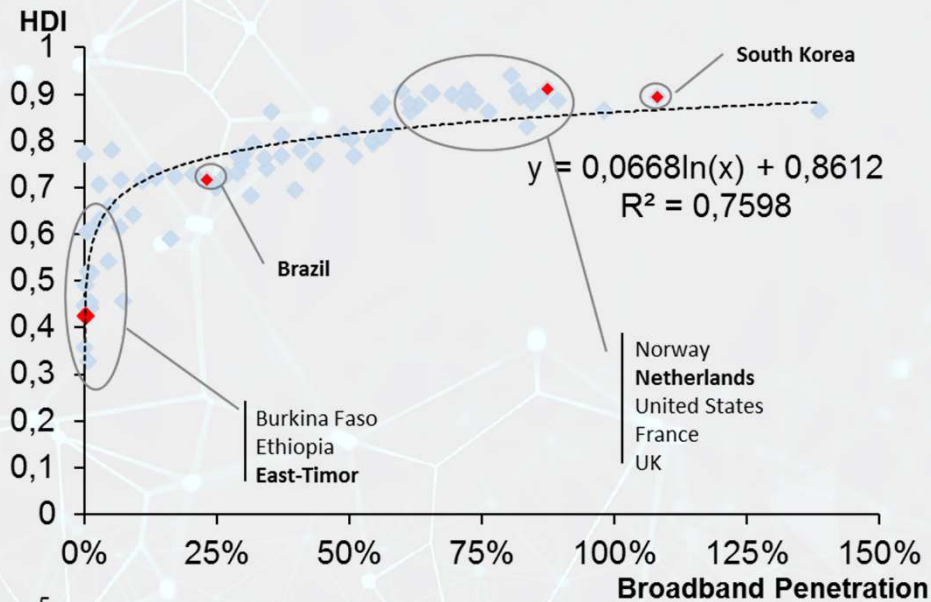


Source: <http://www.itu.int/en/action/climate/Pages/ITU-in-the-UN-Environmental-Agenda.aspx>

- ITU adopted Connect 2030 Agenda for Global Telecommunication/ICT, including broadband, for sustainable development to reaffirm a shared global vision for the development of the telecommunication/ICT sector, envisaging ***"an information society, empowered by the interconnected world, where telecommunications/ICTs enable and accelerate social, economic and environmentally sustainable growth and development for everyone"***.
- Targets under Goal 3: Sustainability, directly relate to the management of challenges resulting from telecommunications and ICT development.

Broadband drives economic development by digital inclusion of the population

Correlation between Broadband Penetration and HDI



Sources: PNUD, ITU, ONU, Oi

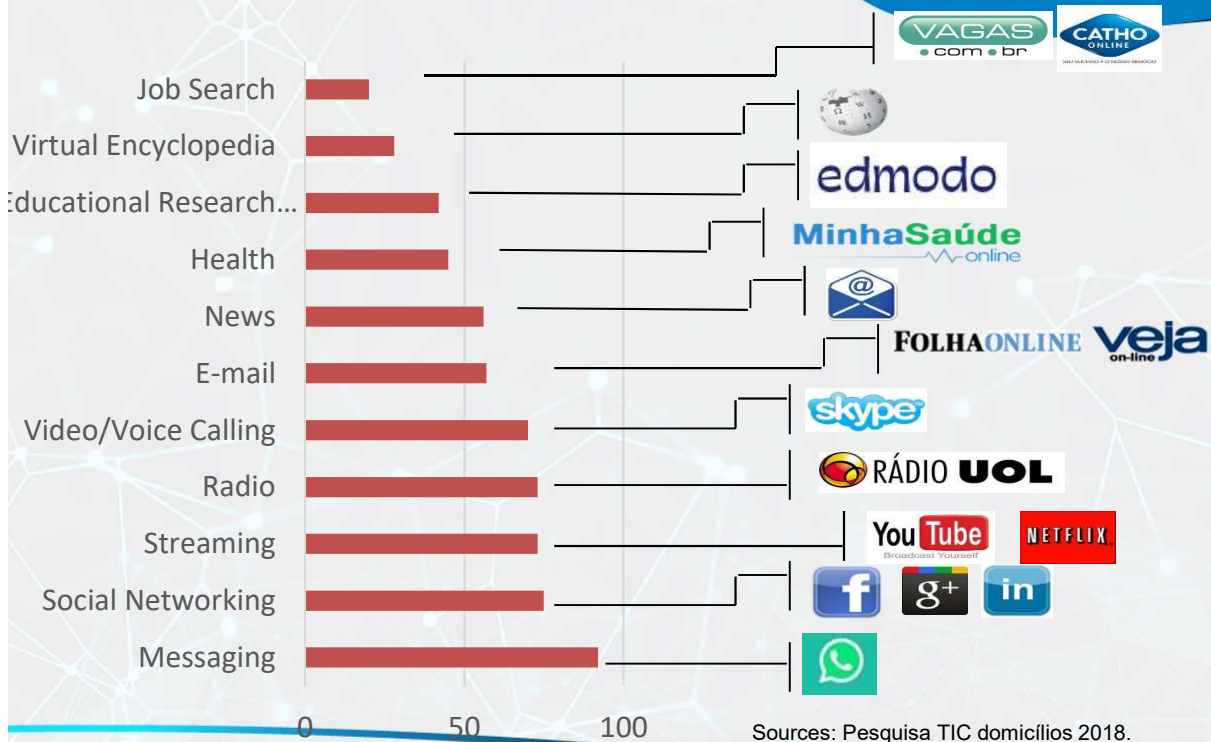
1 Countries with **lower HDI** have **lower broadband penetration**

2 **Governmental Policy:** some countries stand out, often motivated by the government's intention to democratize access, such as South Korea

3 **Brazil is a country of discrepancies:** there are regional differences in development. While Manari/PE resembles East Timor, São Caetano do Sul/SP compares with the Netherlands.

Digital Inclusion democratizes access to information and transforms people's daily lives

Activities Developed in the Internet
% of total users



Sources: Pesquisa TIC domicílios 2018.

Allows and Fosters:
 Access to information
 Democratizes content
 Democratizes processes



Cultural Development
Economic Development
Social Development
Technological Development
Political Development



- **Area: 8,514,876.59 km²**
- **Population: around 207 million people**
 - **85% Urban Population**
 - **15% Rural Population**
- **Total number of municipalities: 5,570**
 - **Population is unevenly distributed in the territory**
 - **North Region is underpopulated**

Sources: <http://databank.worldbank.org>, <http://pt.wikipedia.org/wiki/Brasil>

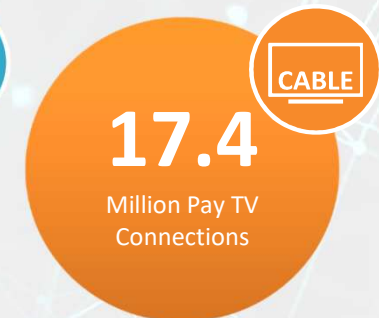
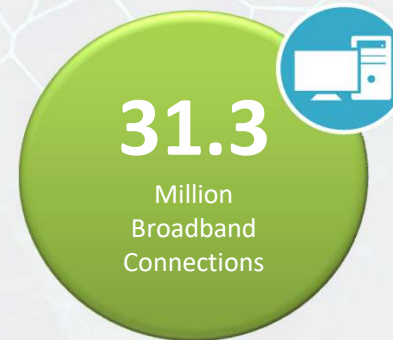
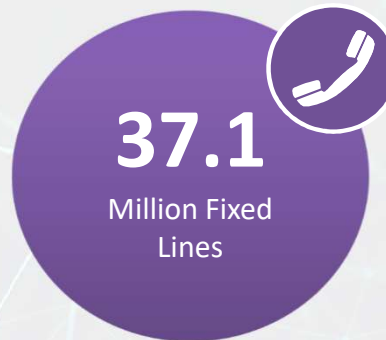
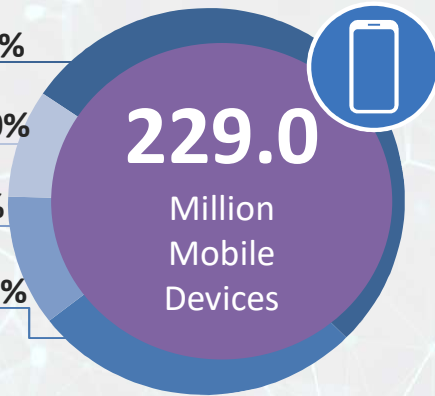
Around **315 million** contracts - February/2019

4G: 58,3%

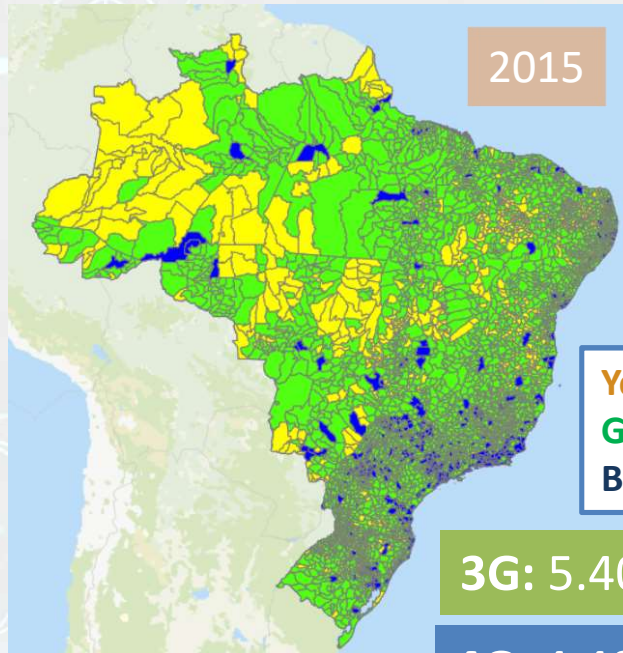
M2M: 10%

2G: 10%

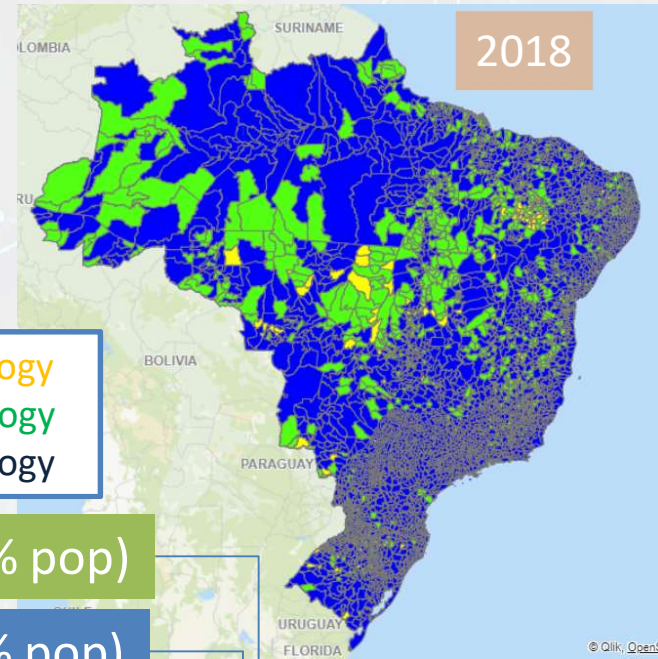
3G: 21,6%



Mobile Telephony Evolution (2G, 3G and 4G)



2015



2018

Yellow -> 2G technology
Green -> 3G technology
Blue -> 4G technology

3G: 5.400+ cities (~97% pop)

4G: 4.400+ cities (~95% pop)

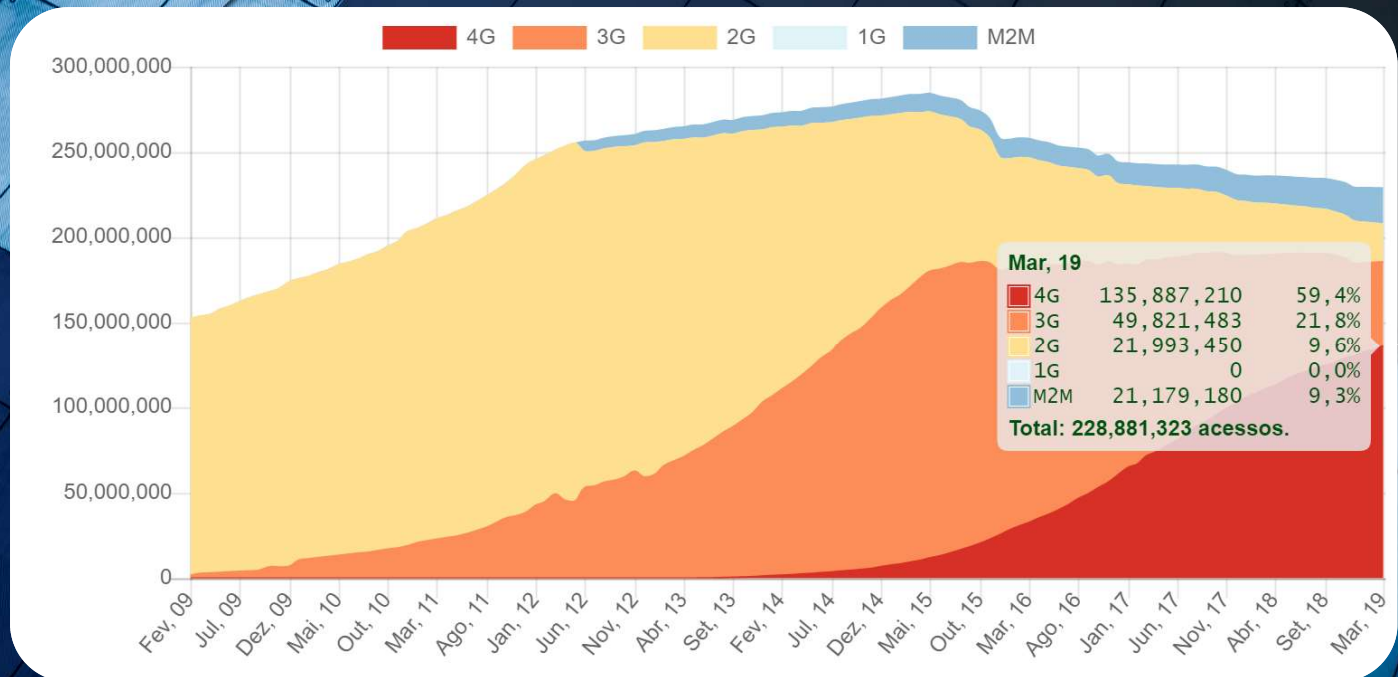
FEB/2019

Note: the map indicates only the servisse availability in the municipality



Sectorial Panorama

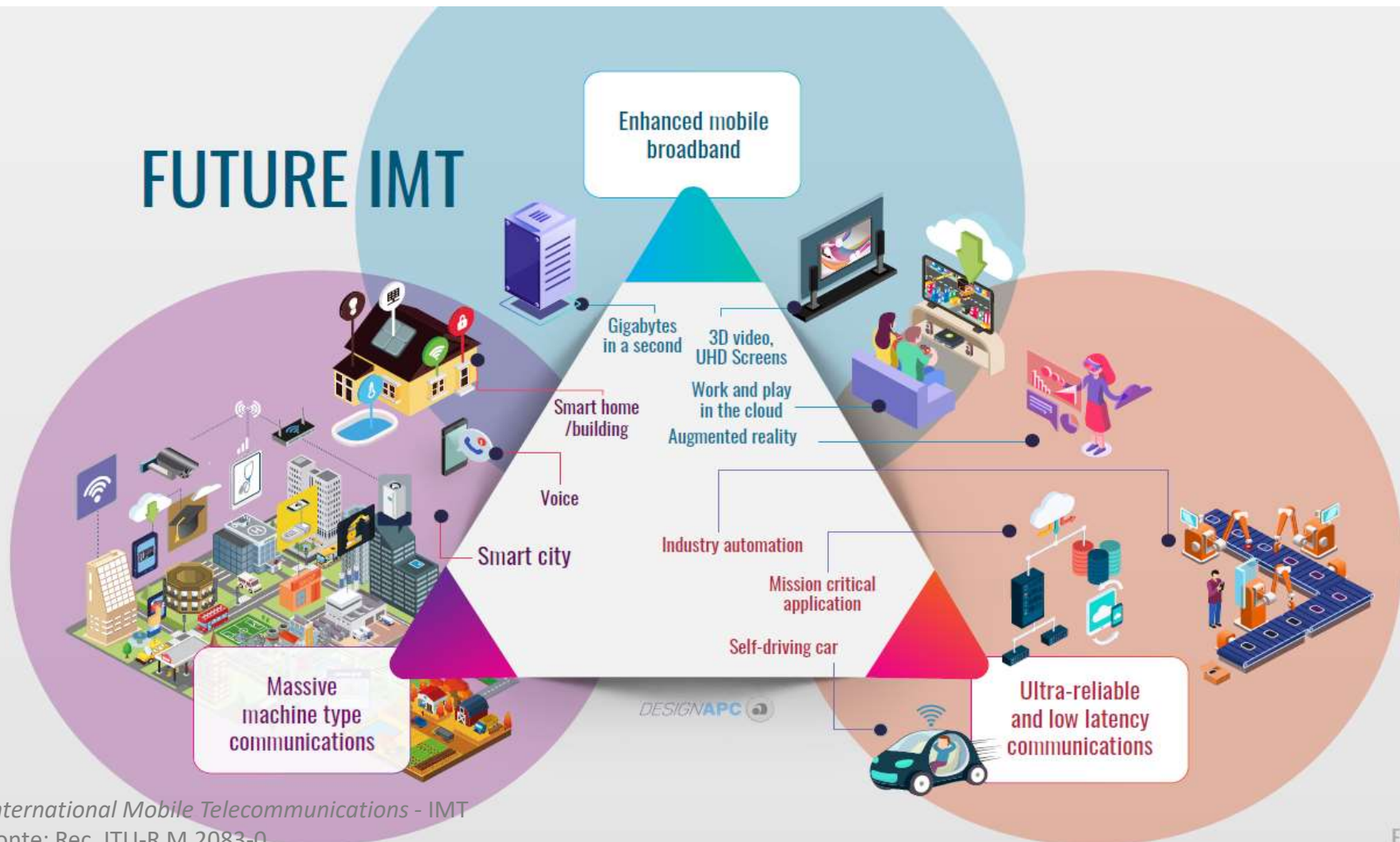
Evolution of Mobile Access per Technology



ANDROID (Google Play): <http://bit.do/eQiZt>

IOS (Apple Store): <http://bit.do/eQiZ3>

FUTURE IMT



DESIGNAPC

Regulatory Agenda* 2019/2020



↓

**THE REGULATORY AGENDA IS
ALIGNMENT WITH THE
STRATEGIC PLANNING OF
ANATEL**

✓ Challenges:

- Provide services to underserved areas with affordable prices
- Improve competition and quality levels
- Ever growing broadband demand and investments
- Synergies/Partnerships between Content Producers (including OTTs)/Broadcasters and Telecom Operators
- Digital Skills

* <https://www.anatel.gov.br/setorregulado/agenda-regulatoria>



Thank you!



www.anatel.gov.br



@anatel_oficial



1332



1331



@anatel.oficial



spr@anatel.gov.br



Agência Nacional de Telecomunicações

Oct/2019