



Standards in a Digital World

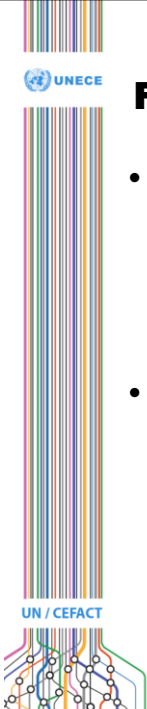
19 April 2019
Geneva, Palais des Nations

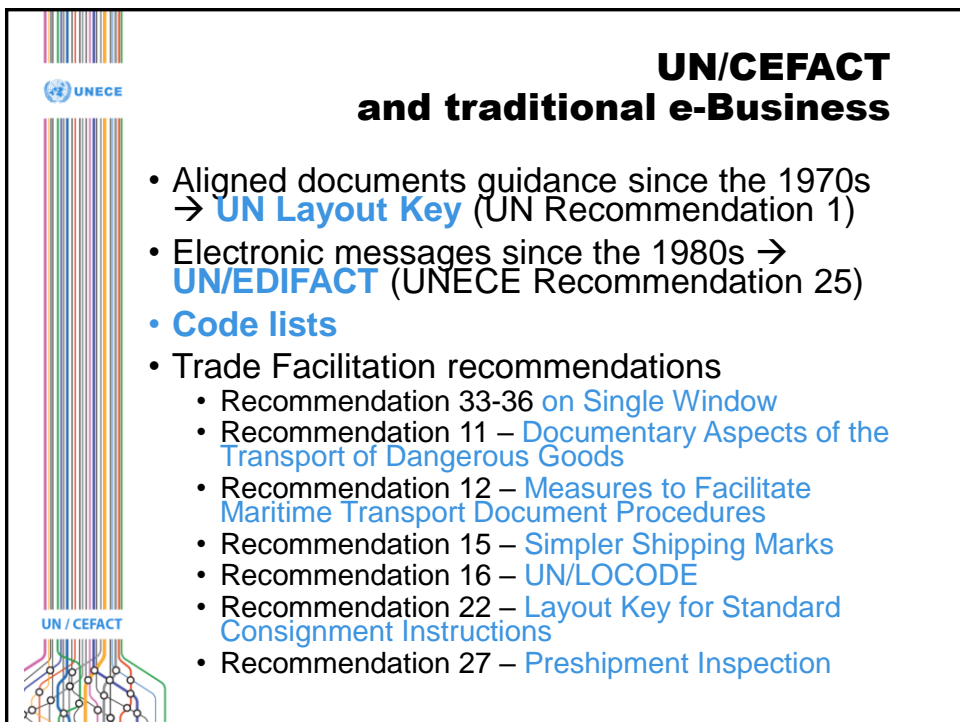
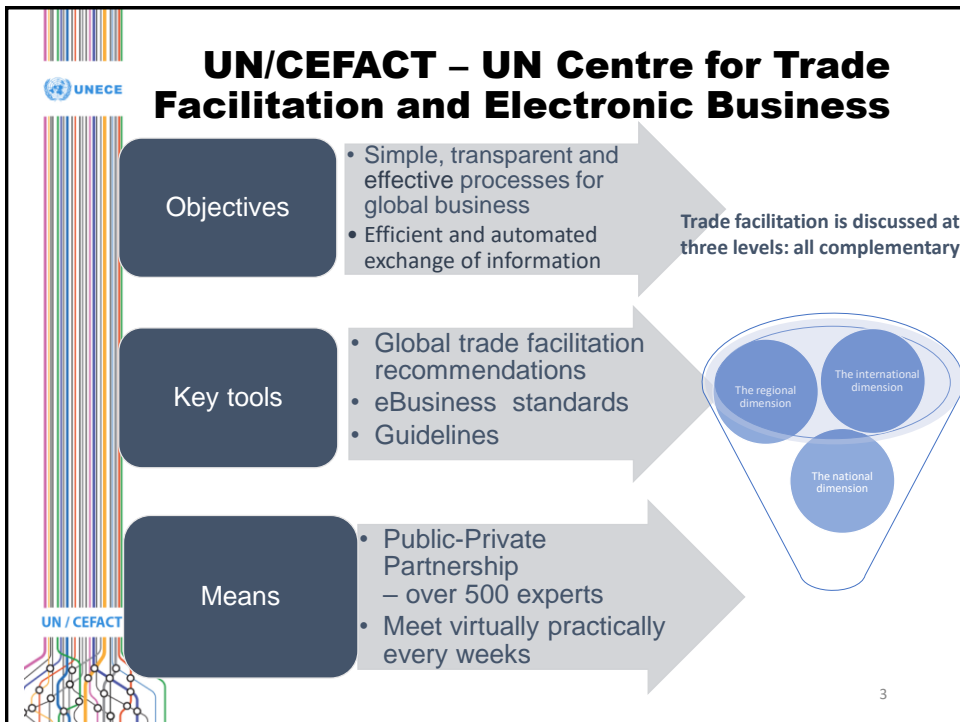
UN/CEFACT vision
<http://www.unece.org/cefact>



UN/CEFACT – UN Centre for Trade Facilitation and Electronic Business

- UN/CEFACT’s mission is to improve the ability of business, trade and administrative organizations, from developed, developing and transitional economies, to exchange products and relevant services effectively.
- Its principal focus is on facilitating national and international transactions, through the simplification and harmonization of processes, procedures and information flows, and so contribute to the growth of global commerce





**UN/CEFACT
example of codes**

The diagram illustrates the mapping of UN/CEFACT codes to various fields in a European Community Export Customs Declaration form. The form is titled 'EUROPEAN COMMUNITY EXPORT CUSTOMS DECLARATION' and includes fields for Consignor/Exporter, Consignee, Country of origin, Country of destination, and various transport and packaging details. Callouts from blue boxes identify the following codes and their corresponding fields:

- Rec 7 Date Formats
- Rec 8 UNIC
- Rec 5 INCOTERMS
- Rec 3 Country Codes
- Rec 9 Currency Code
- Commodity Code
- Rec 20 Units of Measurement
- Other EDIFACT Code Lists
- Rec 24 Status Codes
- Rec 15 Shipping Marks
- Rec 21 Package Codes
- Rec 19 Mode of Transport
- Rec 28 Means of Transport
- Rec 16 UN/Locode

5 5

**UN/CEFACT
Semantic hub**

Shipment

A shipment is an identifiable collection of one or more Trade Items (available to be transported together from the Seller (Original Consignor/Shipper), to the Buyer (Final/Ultimate Consignee):

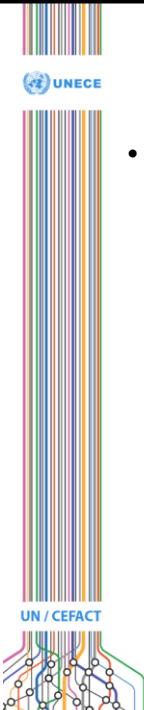
- A Shipment can only be destined for one Buyer
- A Shipment can be made up of some or all Trade Items from one or more Sales Orders
- A Shipment can have only one Customs UCR
- A shipment may form part or all of a Consignment or may be transported in different Consignments.

Consignment

A consignment is a separately identifiable collection of Consignment Items (available to be transported from one Consignor to one Consignee via one or more modes of transport as specified in one single transport service contractual document):

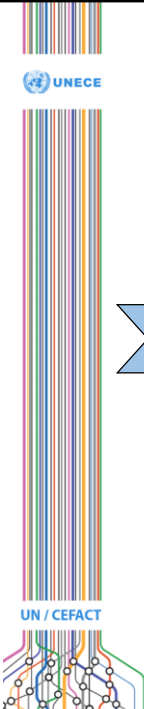
- A Consignment can only have one Transport Service Buyer
- A Consignment can only have one Transport Service Provider
- A Consignment can only have one Consignor
- A Consignment can only have one Consignee
- The Transport Service Buyer can be either the Consignor or the Consignee
- A Consignment is made up of one or more Consignment Items
- A Consignment can be made up of some or all Trade Items (aggregated into Consignment Items) from one or more Shipments

UN / CEFACT

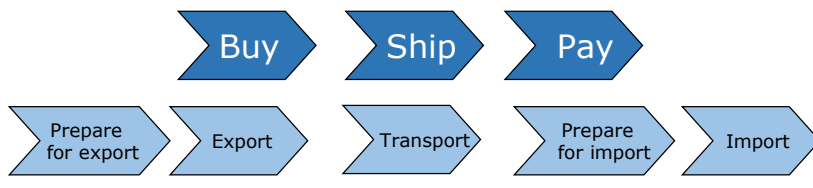


UN/CEFACT and UN/EDIFACT

- UN/EDIFACT Conference
 - Still very much a widely used standard
 - One maritime carrier counts a **double in usage** over the past ten years (100 Million messages in 2008 – 250 Million messages in 2017)
 - Usage in transport of UN/EDIFACT is roughly:
 - 90% of carriers and their agents
 - 95% of terminal operators
 - 80% of port authorities
 - 97% of customs administrations (for maritime arrivals)
 - 40% of road / barge / rail planning
 - The BAPLIE message represents all by itself **35 UN/EDIFACT messages per second** and replaces around 1000 sheets of paper for each container
 - Some freight forwards who were using XML are even adopting UN/EDIFACT in order to have stable, standard messages.



UN/CEFACT Buy-Ship-Pay Model




<p>Commercial Procedures</p> <ul style="list-style-type: none"> • Establish sales contract • Order goods • Advise on delivery • Request payment 	<p>Transport Procedures</p> <ul style="list-style-type: none"> • Establish transport contract • Collect, transport and deliver goods • Provide waybills, • Goods receipts, etc. 	<p>Regulatory Procedures</p> <ul style="list-style-type: none"> • Obtain im/export licenses etc. • Provide Customs Declarations • Provide cargo Declarations • Apply security measures • Clear goods 	<p>Financial Procedures</p> <ul style="list-style-type: none"> • Provide credit rating • Insurance payment • Issue statements
--	--	--	---



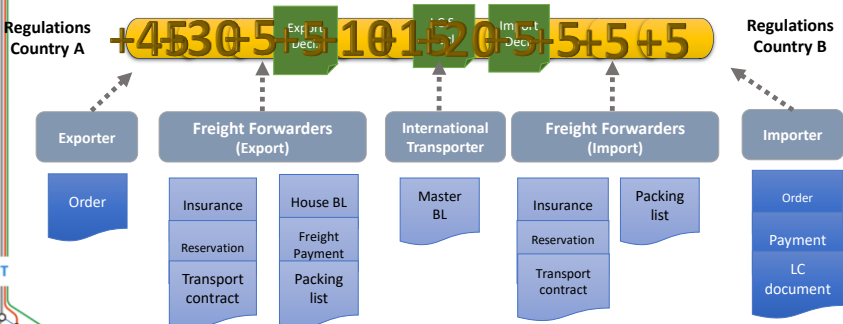
What has changed over the last four years?

“In this session you will have the opportunity to hear the views of e-commerce providers, logistics providers, and regulators on how the positive trend in e-commerce has revolutionized their world over the last four years.”




Authorities want better quality data

- Data Pipeline
 - Results from three EU projects (Cassandra, CORE & SELIS).
 - Innovative methodology to recuperate data at the source and thus improve data quality.




The diagram illustrates a data pipeline between two countries, Country A and Country B. At the top, a yellow bar represents regulatory data points: **+4530-5** (Export Dec), **+101520** (Import Dec), and **+5+5+5** (Import Dec). Below this, the flow involves an **Exporter**, **Freight Forwarders (Export)**, **International Transporter**, **Freight Forwarders (Import)**, and **Importer**. Documents associated with each stage are shown in blue boxes: Order, Insurance, Reservation, Transport contract, House BL, Freight Payment, Packing list, Master BL, and LC document.



Smart Devices are interacting



- **Smart Containers** offer an end-to-end visibility of shipment execution
- Smart containers are capable of sensing and communicating real time information for multimodal transport and logistics improvement.
- Smart containers recording and communicating significant events such as:
 - Arrival at warehouse
 - >1 hour stop on truck
 - Door open
 - >8° C
 - Running late



UN/CEFACT Process driven approach


UN/CEFACT evolution

- From Document centric to Process driven artefacts (*Contextualized Business Artefacts*)
- Supports Document centric & Process driven workflows
- Standardized syntax-neutral data exchange structures, based on common Master data exchange structure
(*from which complete documents and/or snippets of documents can be created in any chosen syntax e.g. XML, JSON or UN/EDIFACT etc.*)



UN/CEFACT Reference Data Models

- We did not try to fix the 400 year old road infrastructure in our cities
- We created super highways to support physical movement




- Similarly we have now developed Reference Data Models for defining required Process Driven information flows to be exchanged along super highways for information

13

UN/CEFACT Traditional standards still necessary

- Semantics and predefined code lists are still very important in eCommerce transactions
- The transaction may start on a platform, but will almost always trigger automated transactions which require traditional e-business standards
- Further standards are still required. Proof is in recently developed standards such as
 - **eCMR**
 - **VERMAS**




UNECE

Brief conclusion

- Yes, the last four years have brought major evolutions – but not all linked to just eCommerce
 - Blockchain, IoT, Big Data, AI have also contributed
- Even with the growing presence of eCommerce platforms, traditional standards are required
- UN/CEFACT aims to be the semantic hub for standardization in international trade

UN / CEFACT



UNECE

UN/CEFACT upcoming meetings

- **31st UN/CEFACT Forum**
 - 23-27 April 2018, Geneva CH
- **Single Window and Electronic Documents conference**
 - 23 April 2018, from 14:00 Salle XXIII
- **Traceability for Sustainable Value Chains conference**
 - 24 April 2018 from 10:00, Salle XXIII
- **Internet of Things conference**
 - 24 April 2018 from 09:30, Salle XXII
- **Blockchain Conference/Workshop**
 - 26 April 2018, from 09:30, Salle XXIII
- **24th UN/CEFACT Plenary**
 - 30 April + 01 May 2018, Geneva CH
- **32nd UN/CEFACT Forum**
 - 15-19 October 2018, Hangzhou, China

UN / CEFACT



Thank you

For more information: <http://www.unece.org/cefact>

Lance THOMPSON,
Head of UN/CEFACT Support Unit
lance.thompson@un.org

UN / CEFAC

