

**UNCTAD**  
**Ad Hoc Expert Meeting on**  
**Assessing Port Performance**

Room XXVI  
Palais des Nations  
Geneva, Switzerland

**12 December 2012**

**PPRISM**  
**Port Performance Indicators: Selection and Measurement**

**Towards a culture in measuring port performance**

by

Ms. Martina Fontanet  
Policy Advisor  
European Sea Port Organisation



EUROPEAN SEA PORTS ORGANISATION ASBL / VZW  
ORGANISATION DES PORTS MARITIMES EUROPEENS ASBL / VZW

# PPRISM

## Port Performance Indicators: Selection and Measurement

### Towards a culture in measuring port performance

Martina Fontanet  
Policy Advisor  
European Sea Port Organisation



EUROPEAN SEA PORTS ORGANISATION ASBL / VZW  
ORGANISATION DES PORTS MARITIMES EUROPEENS ASBL / VZW

## European Sea Ports Organisation

- ★ Founded in 1993
- ★ Represents European seaport authorities
- ★ Members from EU and neighbouring countries
- ★ Secretariat in Brussels
- ★ Recognised counterpart of EU institutions
- ★ A lobby and a knowledge network






**ESPO** EUROPEAN SEA PORTS ORGANISATION ASBL / VZW  
ORGANISATION DES PORTS MARITIMES EUROPEENS ASBL / VZW

## Summary

- ★ Introduction
- ★ Objectives
- ★ Methodology
- ★ Results
- ★ The way forward



**ESPO** EUROPEAN SEA PORTS ORGANISATION ASBL / VZW  
ORGANISATION DES PORTS MARITIMES EUROPEENS ASBL / VZW

## Introduction (I)



- ★ Context
  - 'Modernisation' chapter European Ports Policy 2007
  - Call for proposals DG TREN/SUB/1-2009
  - ESPO-led consortium won bid with proposal 'PPRISM'
- ★ The project was coordinated by the ESPO secretariat
- ★ Key role ESPO Technical Committees
- ★ Research partners



UNIVERSITY OF THE AEGEAN



Technische Universiteit Eindhoven  
University of Technology



Vrije Universiteit Brussel



CARDIFF UNIVERSITY  
PRIFYSGOL CAERDYB



ITMMA  
INSTITUTE OF TRANSPORT AND MARITIME MANAGEMENT ANTWERP



**ESPO** EUROPEAN SEA PORTS ORGANISATION ASBL / VZW  
ORGANISATION DES PORTS MARITIMES EUROPEENS ASBL / VZW

## Introduction (II)

- ★ Port sector is vital but largely unknown to Europe
- ★ Port sector is both a dynamic and traditional industry (idem shipping)
- ★ Port authorities and terminal operators measure own performance but share very little
- ★ (Public) benchmarking highly controversial
- ★ Very few reliable and comparable indicators at European level
- ★ Major obstacles : Lack of standardization, Every port is unique, etc..
- ★ PPRISM as a first step to a culture of measurement for the European port sector as a whole
- ★ PPRISM to contribute to greater transparency and awareness about the vital role of ports

5

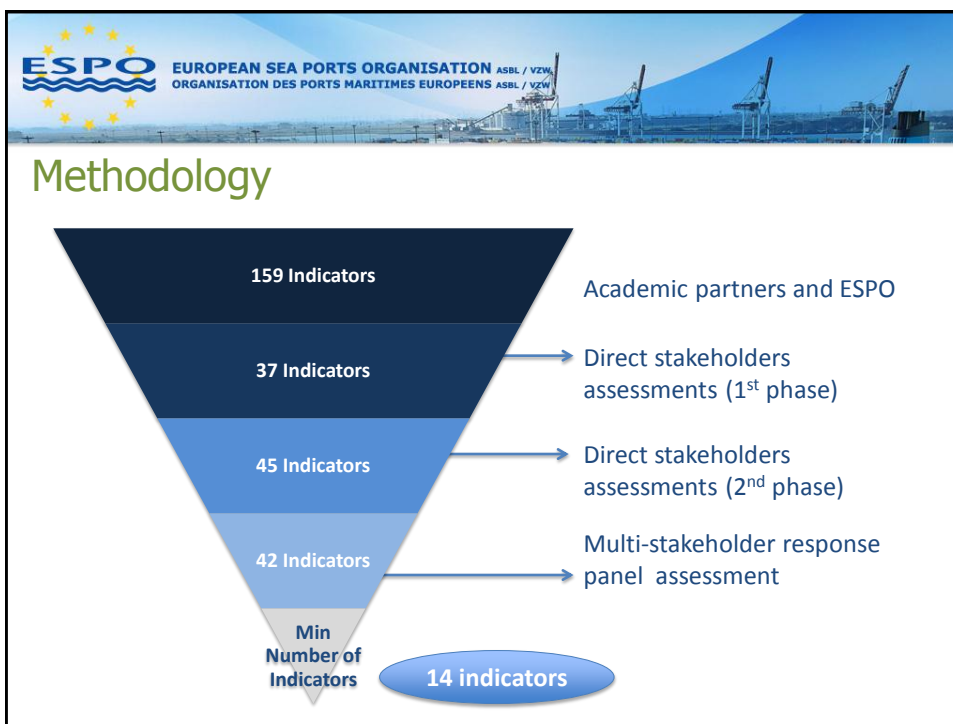


**ESPO** EUROPEAN SEA PORTS ORGANISATION ASBL / VZW  
ORGANISATION DES PORTS MARITIMES EUROPEENS ASBL / VZW

## Objectives

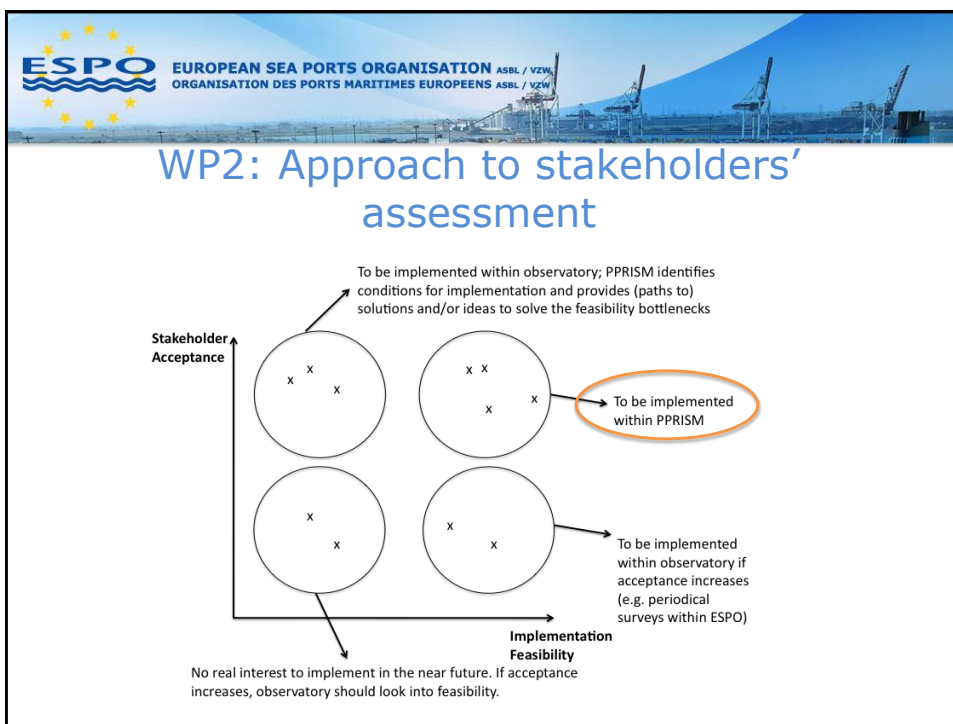
1. Acceptable and feasible Key Port Performance Indicators to measure the impact of the European Port System on society, environment and economy.
  - Market trends and structure
  - Socio-economic impact
  - Environment
  - Logistic chain and Operations
  - Governance
2. Methods for data collection and analysis
3. Concept of Dashboard and Observatory

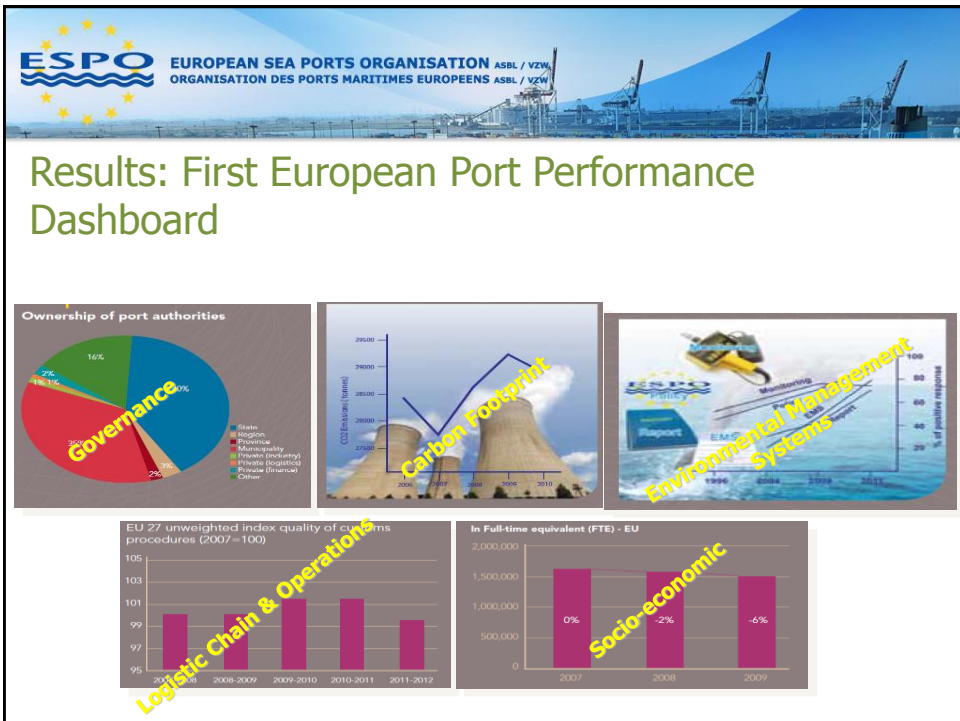
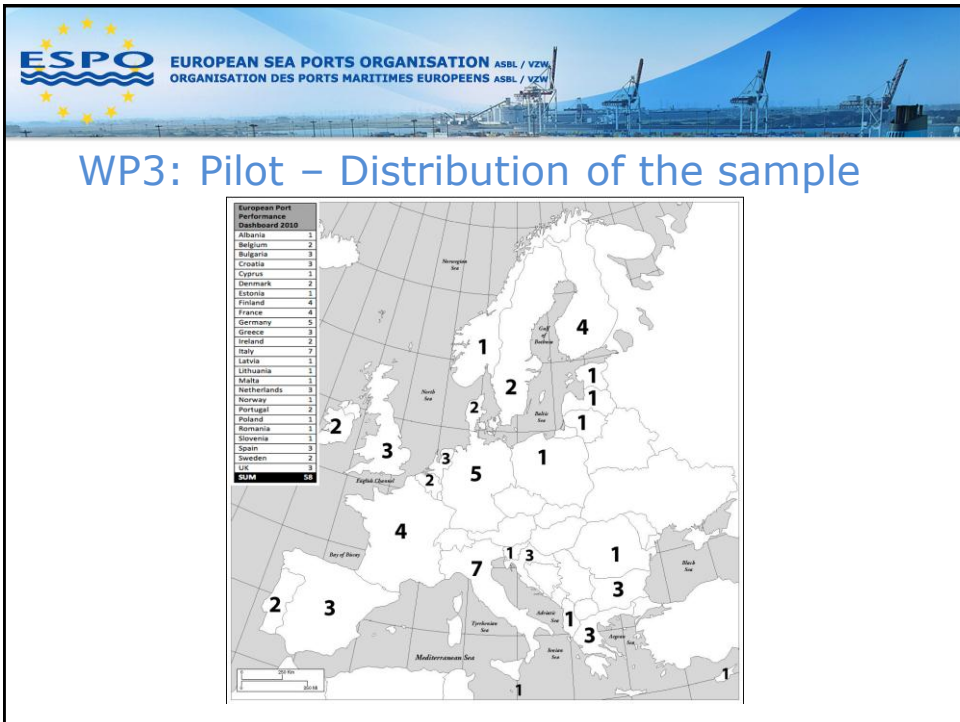
**Each port is unique    Port Authority/port area?    Confidentiality**



**WP1: Academic pre-selection**

<b>Market Trends &amp; Structure Indicators</b> Maritime traffic Herfindahl-Hirschman Index (HHI) Vessel Traffic Market Share Load Rate Container dependency Call size Modal	<b>Environmental Indicators</b> Total energy consumed Carbon footprint Total water consumption Amount of waste EMS standard Existence of Aspects inventory Existence of monitoring programme	<b>Socio-economic Indicators</b> Employment (Direct & Indirect) Added value (Direct & Indirect) Direct Gross added value per FTE Financial health Training per FTE Investment
<b>Logistic Chain and Operational</b> Maritime container connectivity Intermodal container connectivity On-time performance (Sea-going) On-time performance (IW, Rail, Road) Mean-time customs clearance Availability of Port Community Systems Ship turnaround time		<b>Governance Indicators</b> Integration port cluster Extent of performance management Existence of Performance Measurement Formal reporting CSR Market openness Port authority investment Safety/Security Port authority employee productivity Autonomous management








**ESPO** EUROPEAN SEA PORTS ORGANISATION ASBL / VZW  
ORGANISATION DES PORTS MARITIMES EUROPEENS ASBL / VZW

## Achievements to date

- ★ Partnership and Network of Research & Development
- ★ Tools and methodologies
- ★ Assessment and validation - 58 in Pilot
- ★ Anonymity and confidentiality (see, [www.ecoport.com](http://www.ecoport.com) for example)
- ★ Commitment of the industry to continue efforts in terms of performance management




**ESPO** EUROPEAN SEA PORTS ORGANISATION ASBL / VZW  
ORGANISATION DES PORTS MARITIMES EUROPEENS ASBL / VZW

## Next step: PORTOPIA (Ports Observatory for Performance Indicators Analysis)

- ★ Follow-up proposal submitted under FP7 FRAMEWORK (EU funding framework on R&D)
  - Call SST.2013.6-2 – Towards a competitive and resource efficient port transport system.
  - Objective: *to develop a ports observatory with a set of indicators measuring EU ports performance, activities and developments.*
- ★ Extended scope: Inland ports & Port Community
- ★ Extended consortium: Academia, Industry and technological partners





**ESPO** EUROPEAN SEA PORTS ORGANISATION ASBL / VZW  
ORGANISATION DES PORTS MARITIMES EUROPEENS ASBL / VZW

## Objectives of PORTOPIA

- ★ Increase participation of EU port authorities, include inland ports and port stakeholders
- ★ Harmonised data, performance and sustainability of data collection, data management and data storage
- ★ Benchmarking module
- ★ Link indicators to policy objectives
- ★ User quality perception measurement tool (AAPA port users perception initiative)
- ★ Long-term sustainable operation of the EPO, in terms of finance and resources, and stakeholder support
- ★ Communication and dissemination of results, leading to broader societal acceptance of port activities
- ★ Ensure link with existing performance management systems of transport sectors and/or logistic chains linked to ports
- ★ ....



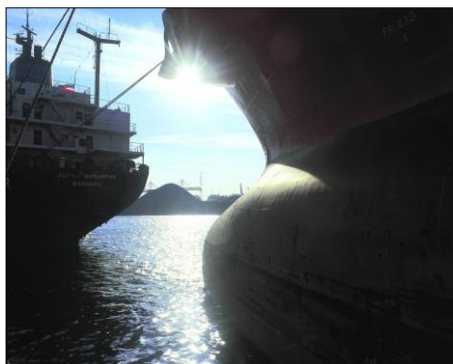
**ESPO** EUROPEAN SEA PORTS ORGANISATION ASBL / VZW  
ORGANISATION DES PORTS MARITIMES EUROPEENS ASBL / VZW

## Outcome of PORTOPIA

- ★ State-of-the-art, sustainable, self-supporting European Ports Observatory, endorsed by port stakeholders, that provides superior value to the industry and its stakeholders by supplying transparent, useful and robust indicators and the contextual analysis of thereof, leading to improved resource efficiency, effectiveness and societal support for the European Port System



Thank you for your attention



**Martina Fontanet – Policy Advisor**

European Sea Ports Organisation (ESPO)

Treurenberg 6 – B-1000 Brussel / Bruxelles - Tel + 32 2 736 34 63 – Fax + 32 2 736 63 25

Email: [martina.fontanet@espo.be](mailto:martina.fontanet@espo.be) – [www.espo.be](http://www.espo.be)