



# **STRENGTHENING STI PARKS IN NATIONAL INNOVATION SYSTEM, ENTREPRENEURSHIP NURTURING AND CLUSTER BUILDING**

*Perspectives of Thailand*

LHING W.



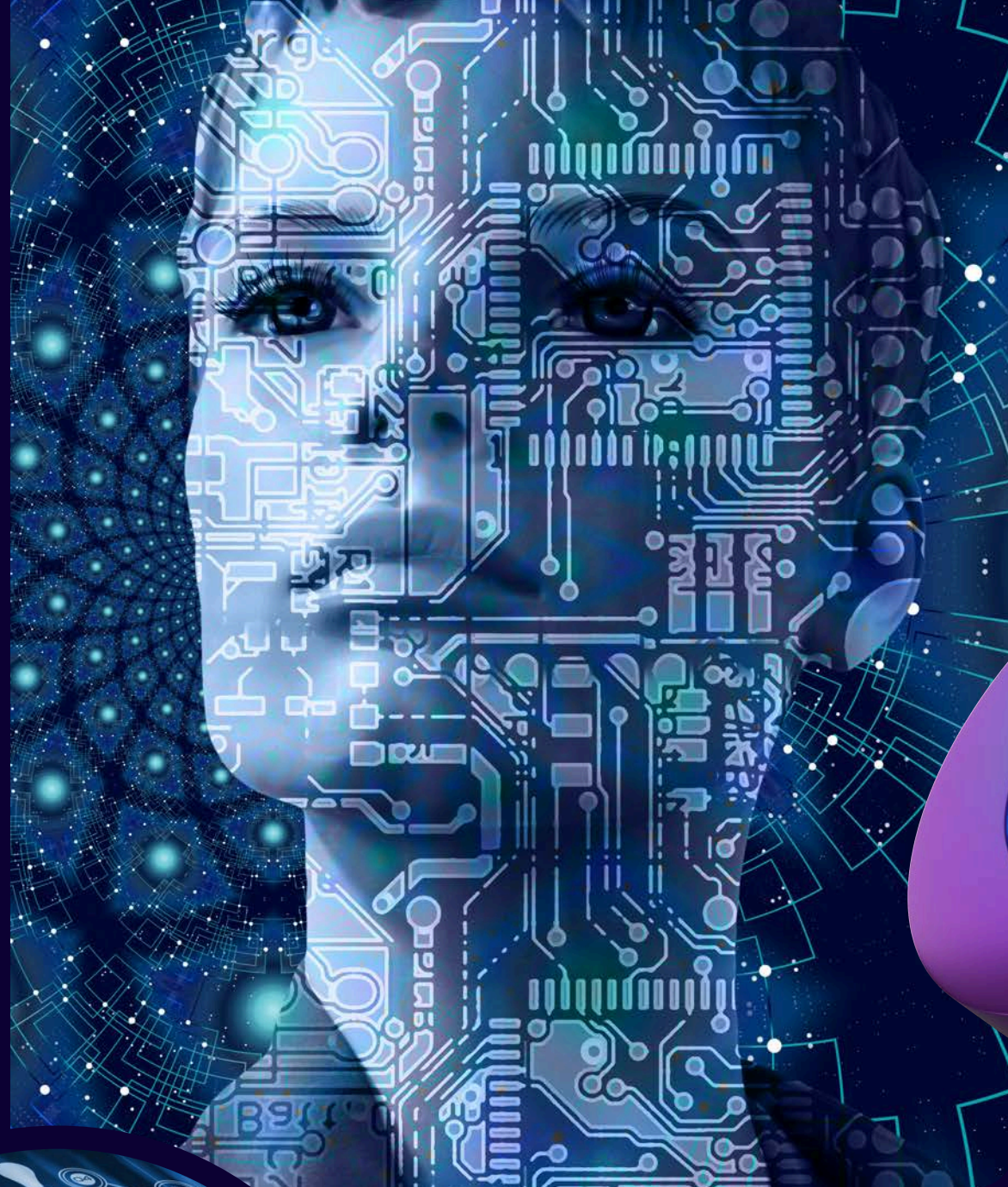
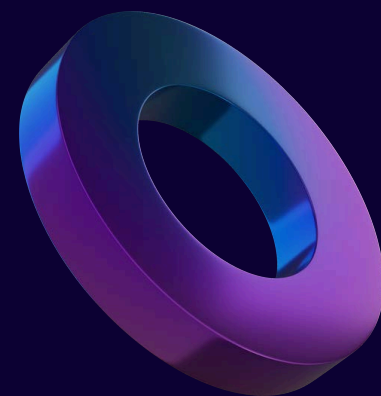


# THE ORCHESTRATOR VS. THE LANDLORD

*“The value of a Science, Technology, and Innovation (STI) Park is not as a **passive-landlord**. Its true value is as an active '**Ecosystem Orchestrator**'. We are the 'deliberate connective tissue' that links high-level policy to on-the-ground results.”*

# INTEGRATING STI PARKS INTO THE NATIONAL INNOVATION SYSTEM

“An STI park that is not integrated into the national innovation system is just a real-estate project. To be effective, it must be the **implementation arm of the national strategy.**”





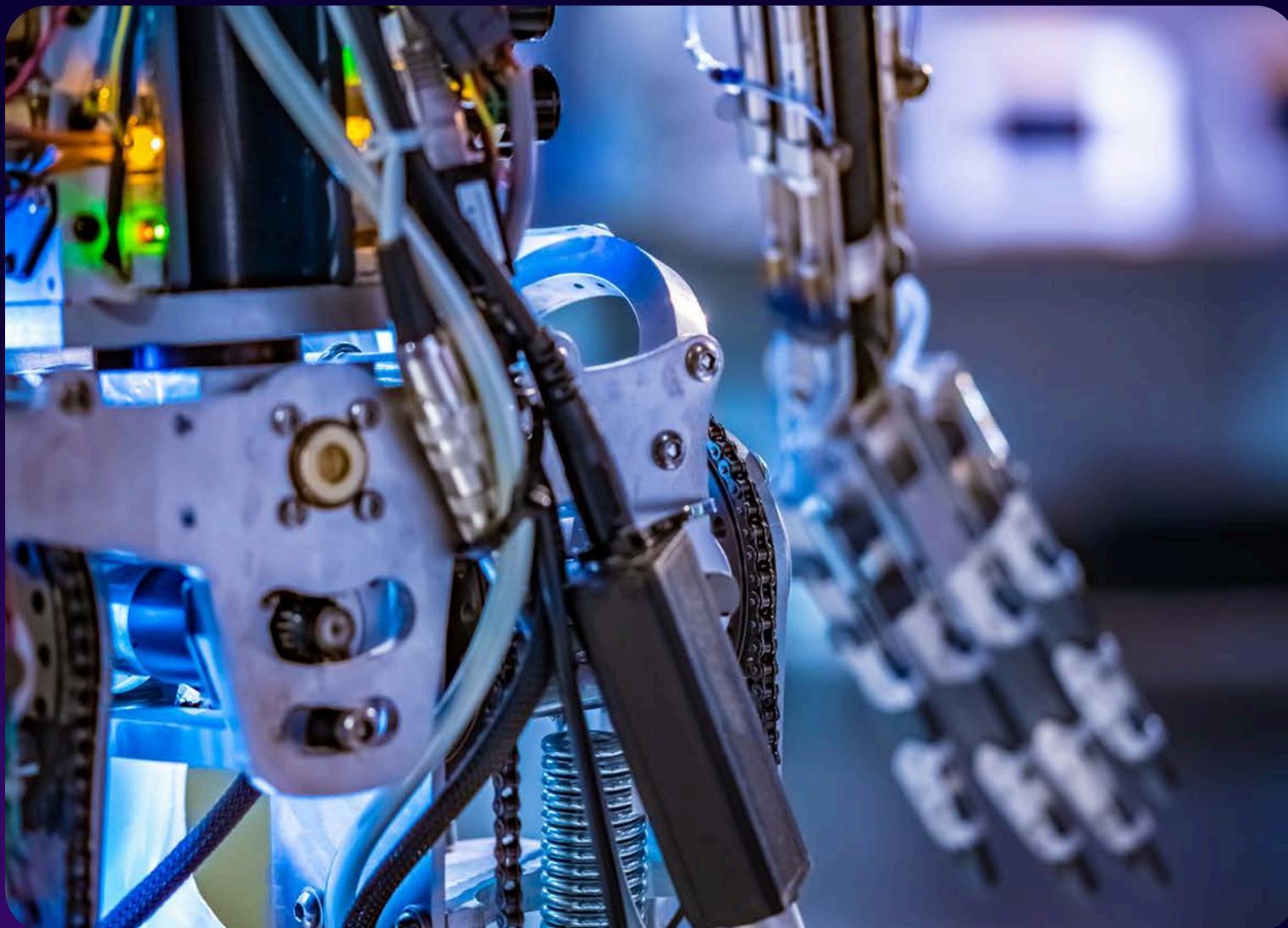
# USING STI PARKS AS A CATALYST FOR ENTREPRENEURSHIP

"Entrepreneurship is a journey, not a single event. As orchestrators, our job is to build a **coherent pipeline that de-risks this journey** for founders."

The real value we create is in the orchestration of services that guide a founder from an idea to a market-validated solution."



# LEVERAGING PARKS FOR INDUSTRIAL CLUSTERS



"Startups don't scale in isolation. They scale by plugging into established industrial value chains. The final job of the STI park is to be **the matchmaker.**"



# THE CONTINUUM

1

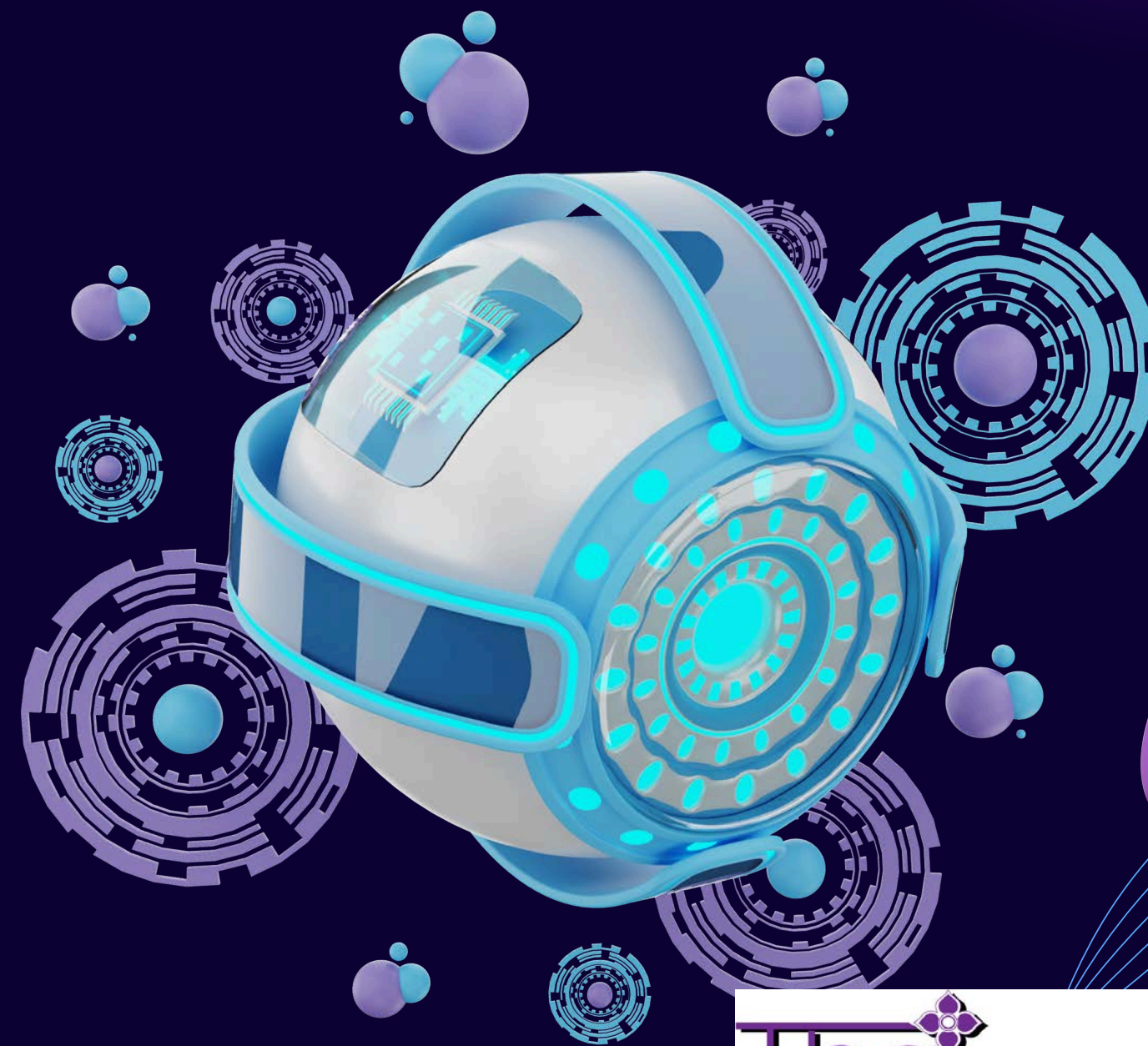
The **National System** gives us our **purpose and strategy**.

2

**Entrepreneurship Nurturing** is our **process** for building the new ventures to meet that purpose.

3

And **Industrial Clustering** is the **result**, where these ventures connect, scale, and create real economic impact.



# Thai Business Incubators and Science Parks Association



**42 members** serving more than **4,000 ventures** nationwide

Thai-BISPA is an **ecosystem integrator**. We play an important role in **capacity building and strengthening** the management of business incubators, science parks and other innovation promoting organizations. In addition, we build **supporting platforms and mechanisms** to share knowledge and resources as well as networks. We represent our members in providing **policy recommendations** and liaising with government and industry at large.

