



Transport and
logistics

Train for Trade II

EU-UNCTAD joint Programme for Angola



WEBINARS DE CAPACITAÇÃO EM PPPs PARA PLATAFORMAS LOGÍSTICAS EM ANGOLA

Patrick Andersson

Chief Commercial Officer DP World Luanda

Luanda, Angola / On-line, 15 e 16 de Julho de 2021.



The logo for DP World Luanda features the text "DP WORLD" in a bold, dark blue, sans-serif font. To the right of "DP WORLD" is a circular icon containing a stylized globe with green, blue, and red segments. Below "DP WORLD" is the word "Luanda" in a smaller, red, sans-serif font. Two thin, parallel orange diagonal lines are positioned on either side of the logo, extending from the top edge of the image towards the center.

DP WORLD
Luanda

An aerial photograph of a port terminal. The foreground and middle ground are dominated by a vast area filled with stacks of intermodal containers in various colors, including blue, red, yellow, and white. In the background, several large cargo ships are docked at the pier, with cranes visible. The water of the harbor is visible to the left, and the sky is a pale, hazy blue. The overall scene depicts a busy and well-organized port facility.

DP WORLD LUANDA
GATEWAY TO ANGOLA

DP WORLD LUANDA

DP World has been awarded a 20 year concession to operate the Multipurpose Terminal (MPT) at the Port of Luanda

DP World has successfully started operations from 28th of February 2021

Investment plan of up to US\$190m in year 1 to upgrade the container terminal



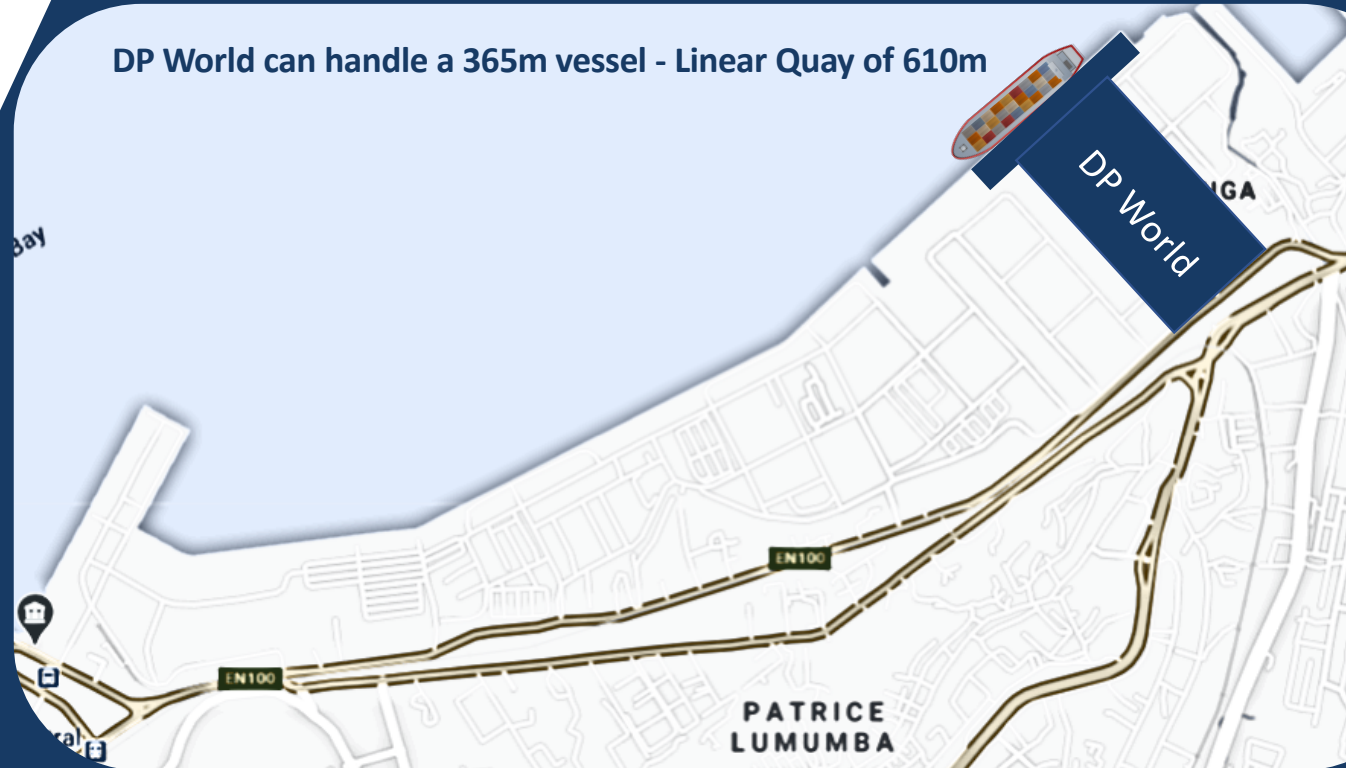
CAPACITY

PRESENT & POST UPGRADE



Terminal Specifications	Present	Post Terminal upgrade	Timelines
Draft	12.5 (m)	12.5 (m)	
Quay Length	610 (m)	610 (m)	
Total Stacking Capacity	12,000 TEUs	17,000 TEUs	2023

DP WORLD BENEFITS



- DP World can handle 2 vessels alongside, capability to deploy 3 MHCs per vessel simultaneously
- Deepest draft in Luanda port, 12.5 (m) uniform draft along the entire quay
- Largest yard area among all the containers terminals in Luanda,

DP WORLD LUANDA – RTG OPERATIONS

Will be the only Terminal in Luanda to deploy RTGs

Plan to deploys 10 modern RTGs

Terminal with the largest container handling capacity in Luanda



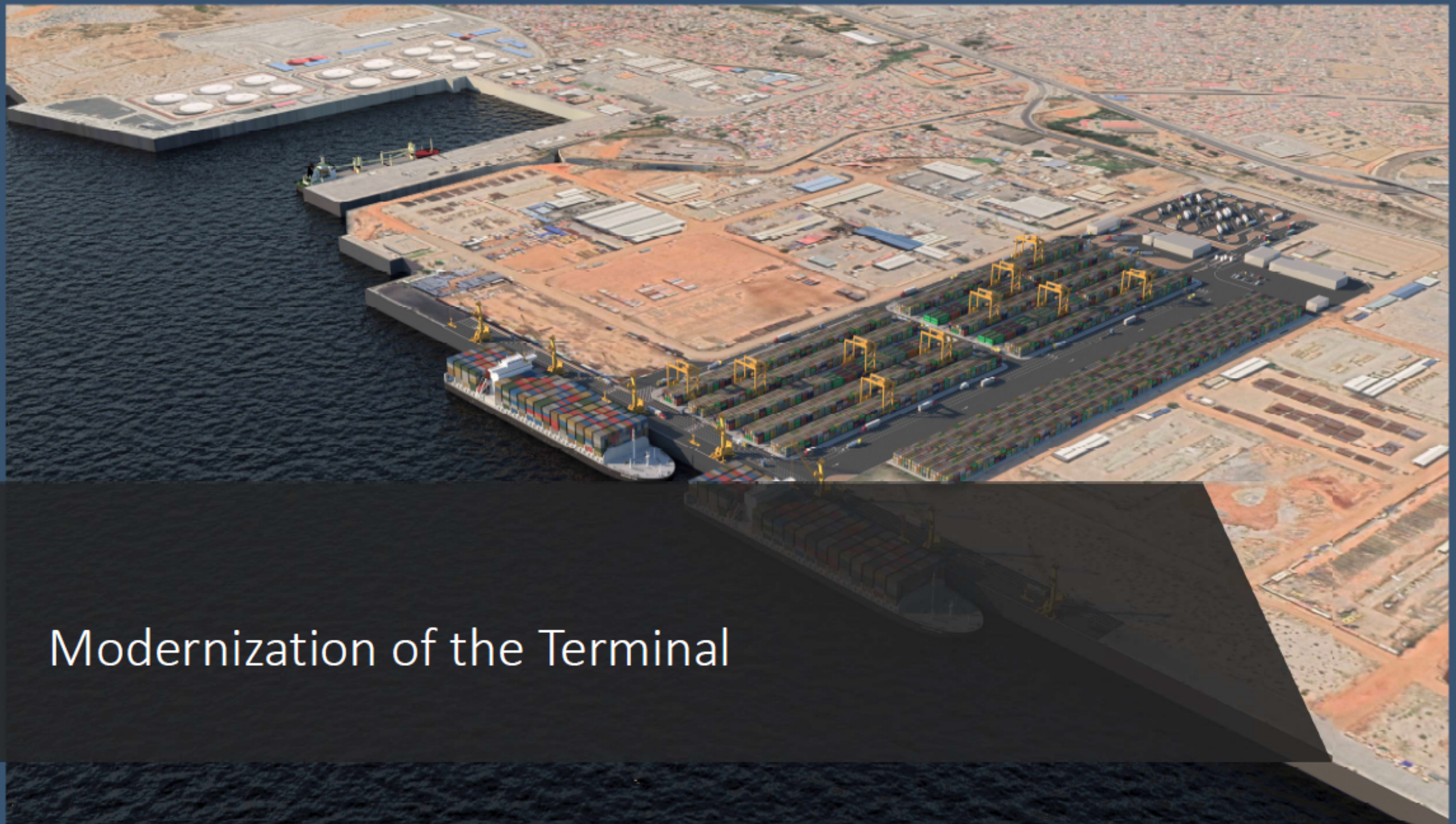


**Operation and
Planning (OPS)**



Quickest implementation of TOS in DP World

Implemented in first 45 days of takeover of operations



Modernization of the Terminal

CONNECTIVITY

Corridors

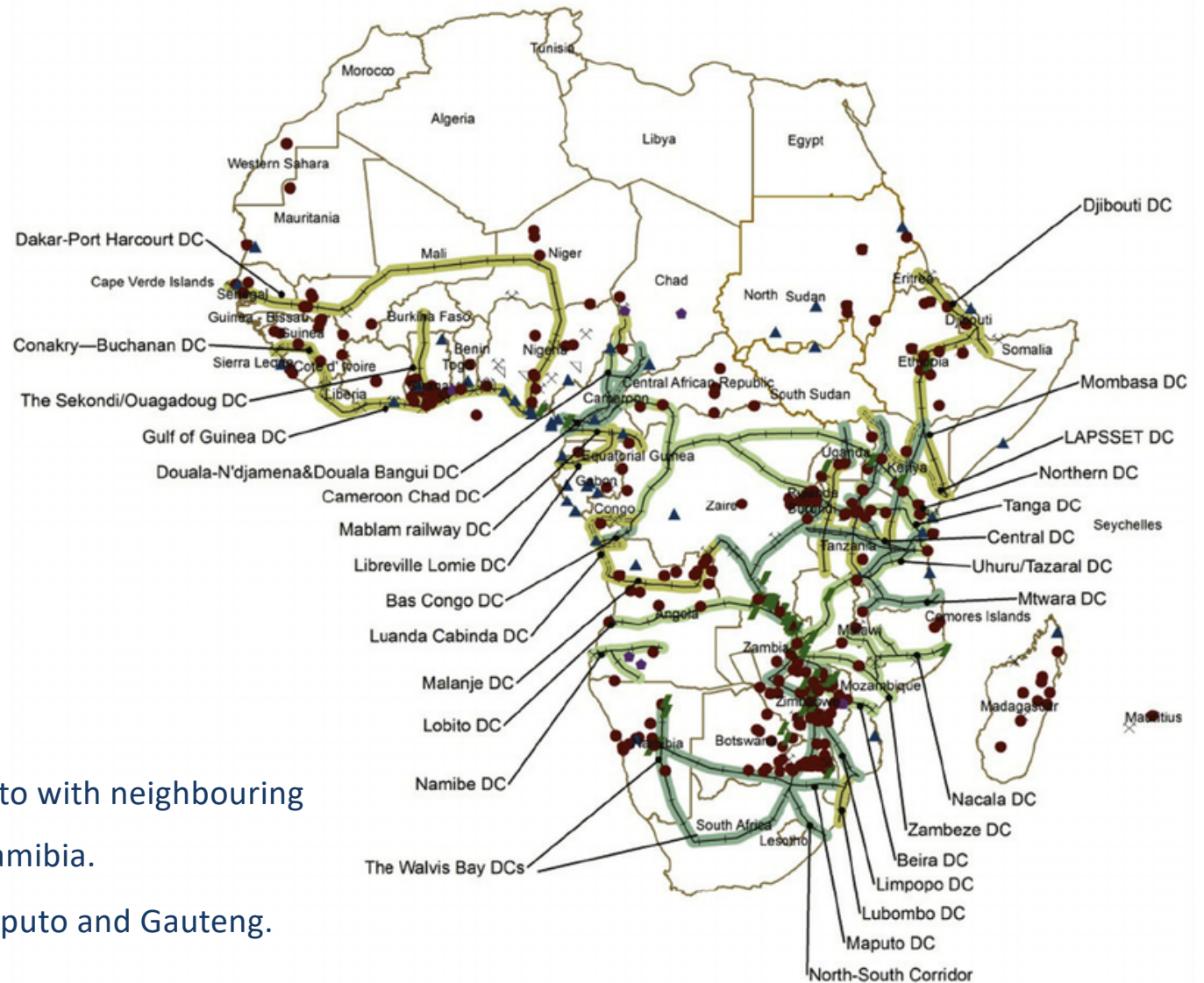
----- Railway/pipeline

→ Railway/road

Active

Proposed

Planned upgrade



- Improve Intra-regional connectivity
- Support Angola improve connectivity to with neighbouring countries: DRC, Zambia, Botswana, Namibia.
- DP World Komatiport: Connecting Maputo and Gauteng.