

United Nations Trade and Development (UNCTAD)

**GLOBAL COMMODITIES FORUM**  
**9-10 December 2024, Geneva**

**Collaborative and Inclusive Traceability in Agricultural Supply Chains**

Lars Kahnert, Digitalisation Advisor, GIZ/SASI/DIASCA

The views expressed are those of the author and do not necessarily reflect the views of UNCTAD.

# Collaborative and Inclusive Traceability in Agricultural Supply Chains



**Global Commodities Forum**

**9-10 December 2024, Geneva**



Lars Kahnert  
Digitalisation Advisor  
GIZ/SASI/DIASCA

# Challenges



**Digital  
becomes  
mandatory**

Lack of **access**  
to digital  
solutions

**Fragmented**  
digital market

Lack of  
**standard**  
approaches

Lack of **data**  
**sovereignty**



**Additional  
burden**  
instead of  
benefit

Economic &  
digital  
**dependencies**



**Risk of  
Exclusion:  
Farmers,  
Regions,  
Countries**





# Heading towards compliance.... ...yet: Everyone is building their own railway track ....and their own trains!

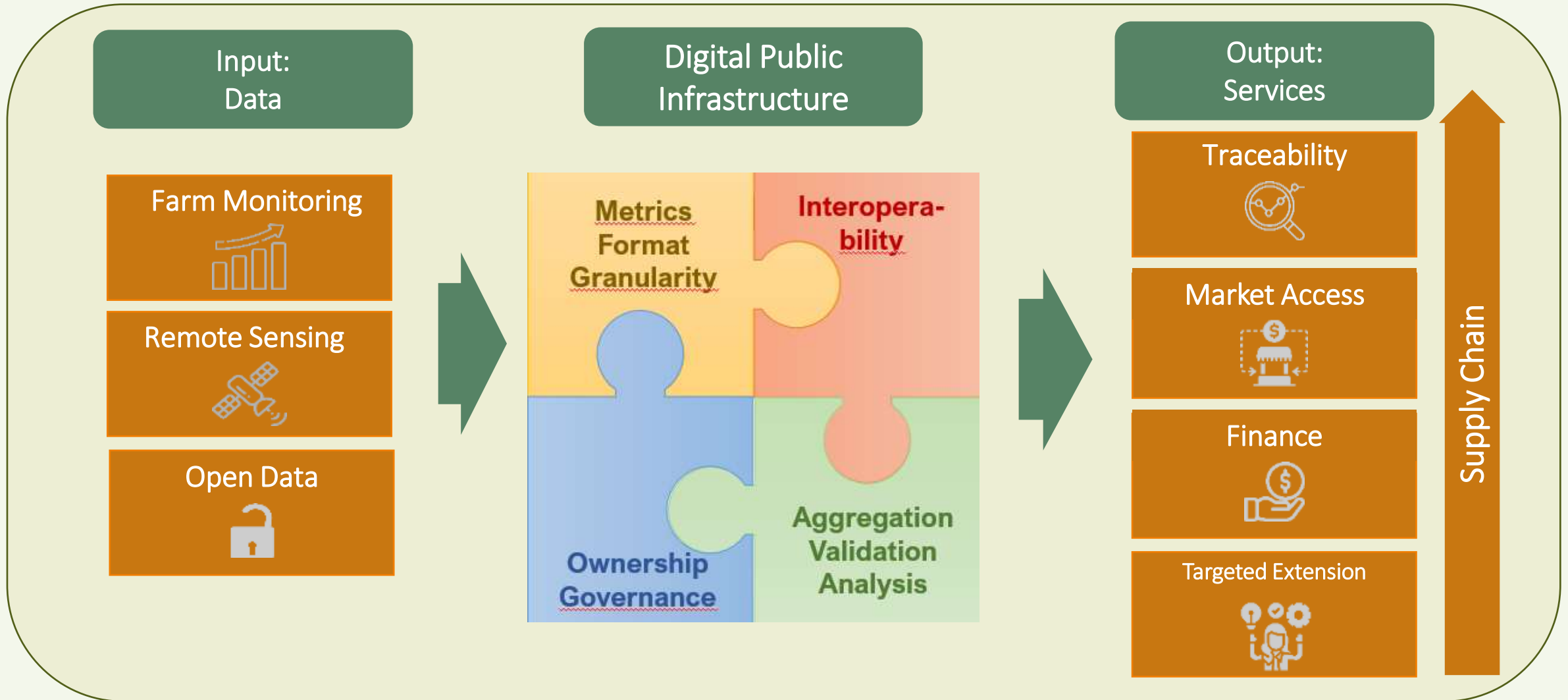
But what about....

- Cost / Reusability
- Accessibility
- Maintainability
- Interoperability / Standardization
- Trust (Neutrality, Security)
- Quality



# 'Digital Backbone' of Agricultural Supply Chains

## Decoupling data from apps



# Interoperability

Data Exchange

Data Re-Use

Comparability

Aggregateability

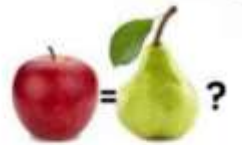
Accessibility

First / Last Name	Tran Thi Nguyen	Farmer Name	Nguyen Tran Thi
Geolocation	41.25-120.9762	Location	41°25'01"N 120°58'57"W
Cost	2000 USD	Production Cost	Fertilizer: 260000 VND/a Labour: 2300000 VND/m Energy: 43000 VND/month 900 Kg/ha 250 litres/ha
Yield	27 bags/a	Yield	
Water Usage	High	Water	

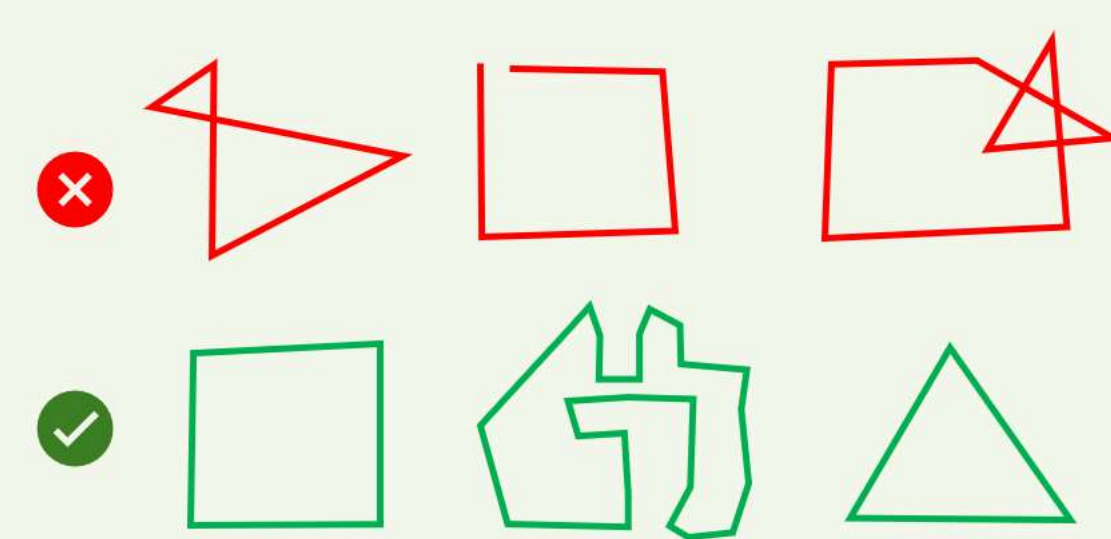
Name	Nguyen
Georeference	S17 33 08.352 W69 01 29.74
Cost of Production	Fertilizer A: 260000 VND/a Fertilizer B: 260000 VND/a Fertilizer C: 260000 VND/a Labour: 2300000 VND/m Fuel: 43000 VND/month Electricity: 434567 VND
Productivity	900 Kg/ha
Water Usage	25 litres/kg

After Tim Davies, ODS



# Data Quality

## Example: Geodata for EUDR



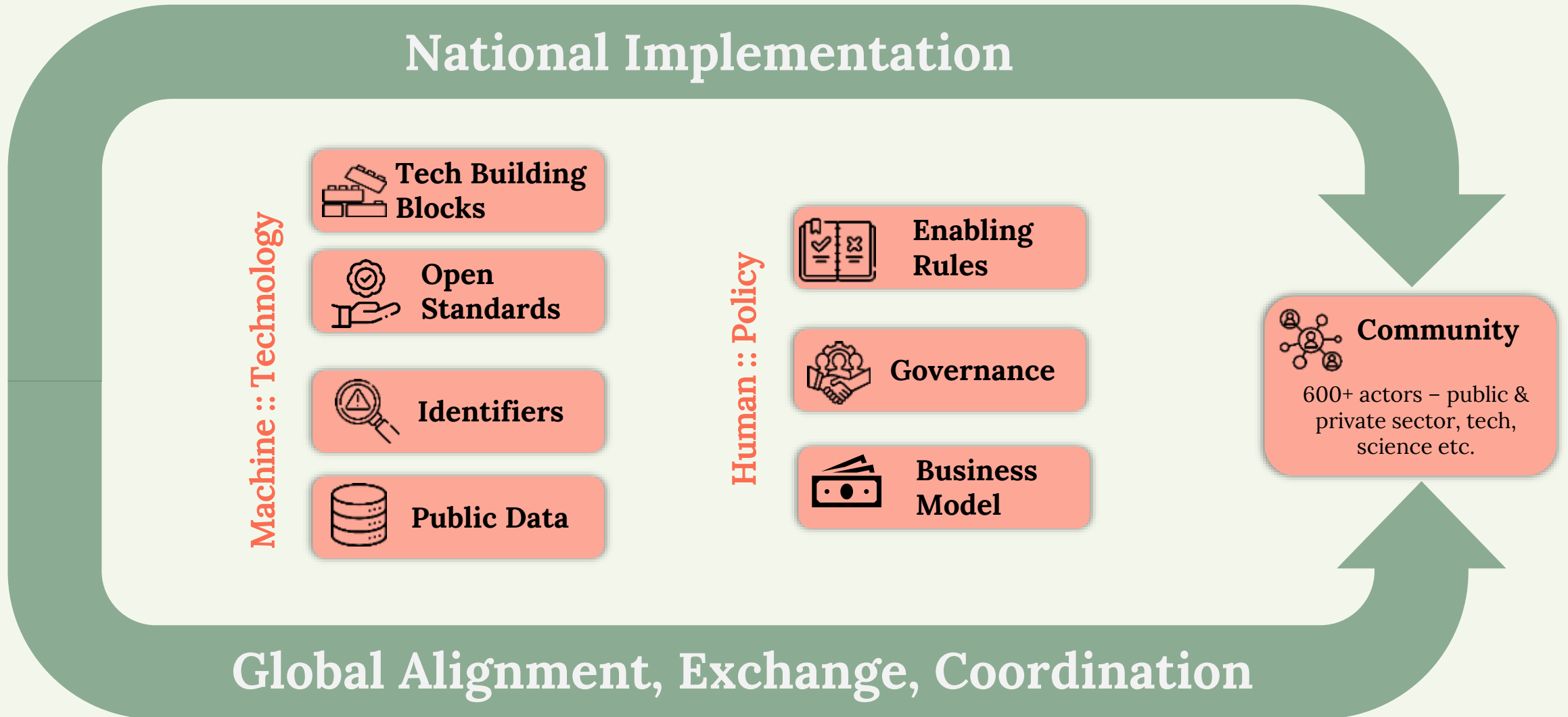


# Defining Digital Public Infrastructure (DPI)

*A set of technology building blocks  
powered by interoperable open standards/specifications  
operated under a set of enabling rules  
with open, transparent, and participatory governance  
to drive innovation, inclusion, and competition at scale*



# Towards DPI for Agriculture





# Recent Publications



## Realizing the Potential of Interoperability for Building More Trustworthy and Transparent Global Agrifood Supply Chains

DIASCA Working Group on Traceability Working Paper  
October 2024

Brian King & John G. Keogh

## Forest Monitoring

**giz** Deutsche Gesellschaft für Internationale Zusammenarbeit (GIZ) GmbH

## Farmer Income & Cost of Production Indicator and Methods Guidance

Phase 1 & 2: Semantics and Syntax

**giz** Deutsche Gesellschaft für Internationale Zusammenarbeit (GIZ) GmbH





# Tech Building Blocks (EUDR example)

## Boundaries

- Field data
- Manual / AI-based
- Segmentation

## Unique Geo-IDs

- GDSP compliant
- Anonymous
- Attribute-less

## Public geodata

- Land cover (change)
- Biophysical
- Land use

## Public models

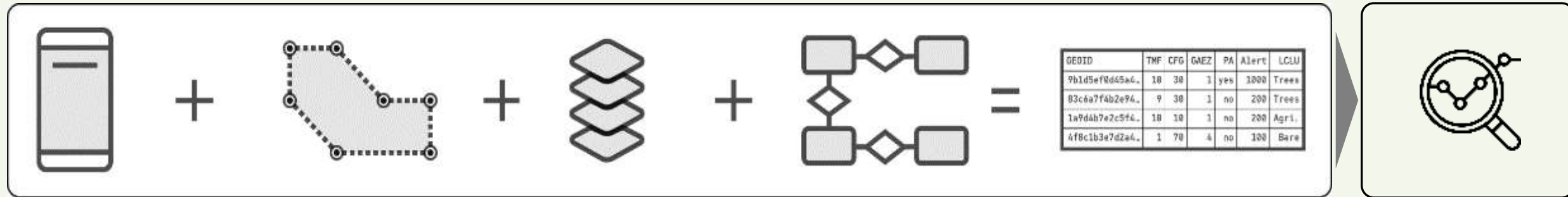
- AI models
- Decision trees

## Compliance support

- Standardized data
- Risk assessment at plot level

## Traceability

- interoperable systems



TraceFoodChain





# Geo-IDs: Asset Registry



<http://asset-registry.agstack.org>

Geoid: **ff93ad2470125dfe0f21b7b857140c94efa635c8b6f25104419e88129db9f682**



- It is a free, open source, public registry to create and maintain ubiquitous, geo-intelligent unique “public geoIDs” for field boundaries without requiring any other attribution
- geoIDs are anonymous, addressable but not discoverable

**To be hosted by FAO globally, complemented by national instances**





# What is in that plot?

## Convergence of Evidence



FOREST DATA  
Partnership

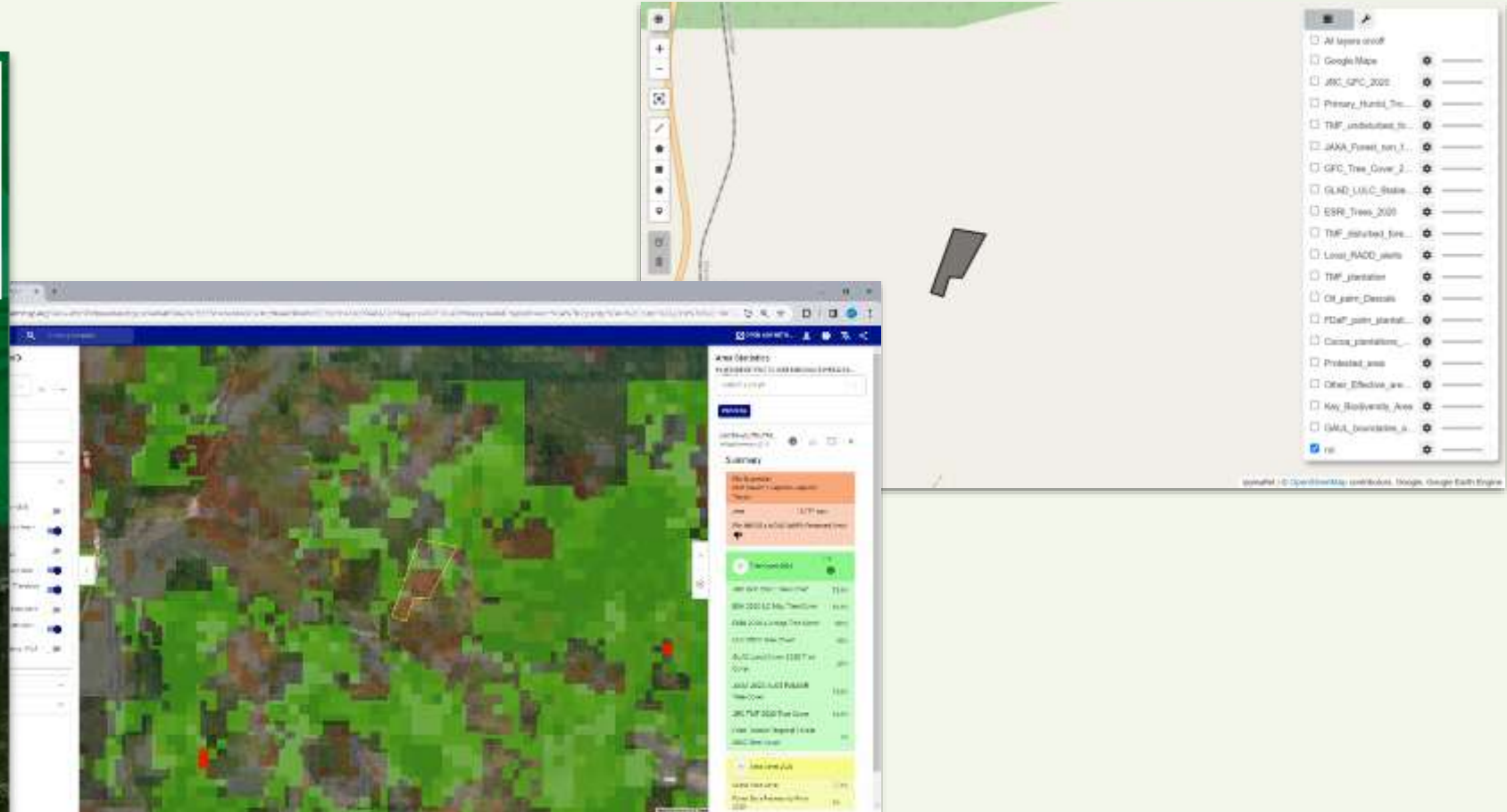


Food and Agriculture  
Organization of the  
United Nations



**Towards a digital public infrastructure for  
deforestation-related trade regulations**

What is in that plot? (Whisp) solution to implement convergence of evidence



<https://whisp.earthmap.org/>  
<https://github.com/forestdatapartnership/whisp>



# Open Source Traceability



- Free to use
- Highly adaptable & scalable
- maps all process steps and transactions, from the field to the end product
- Includes a polygon mapping app
- Integrated with WHISP and Asset Registry
- Integration in national DPIs ongoing
- in productive use in many countries and supply chains

<https://inatrace.org/>  
<https://github.com/inatrace>



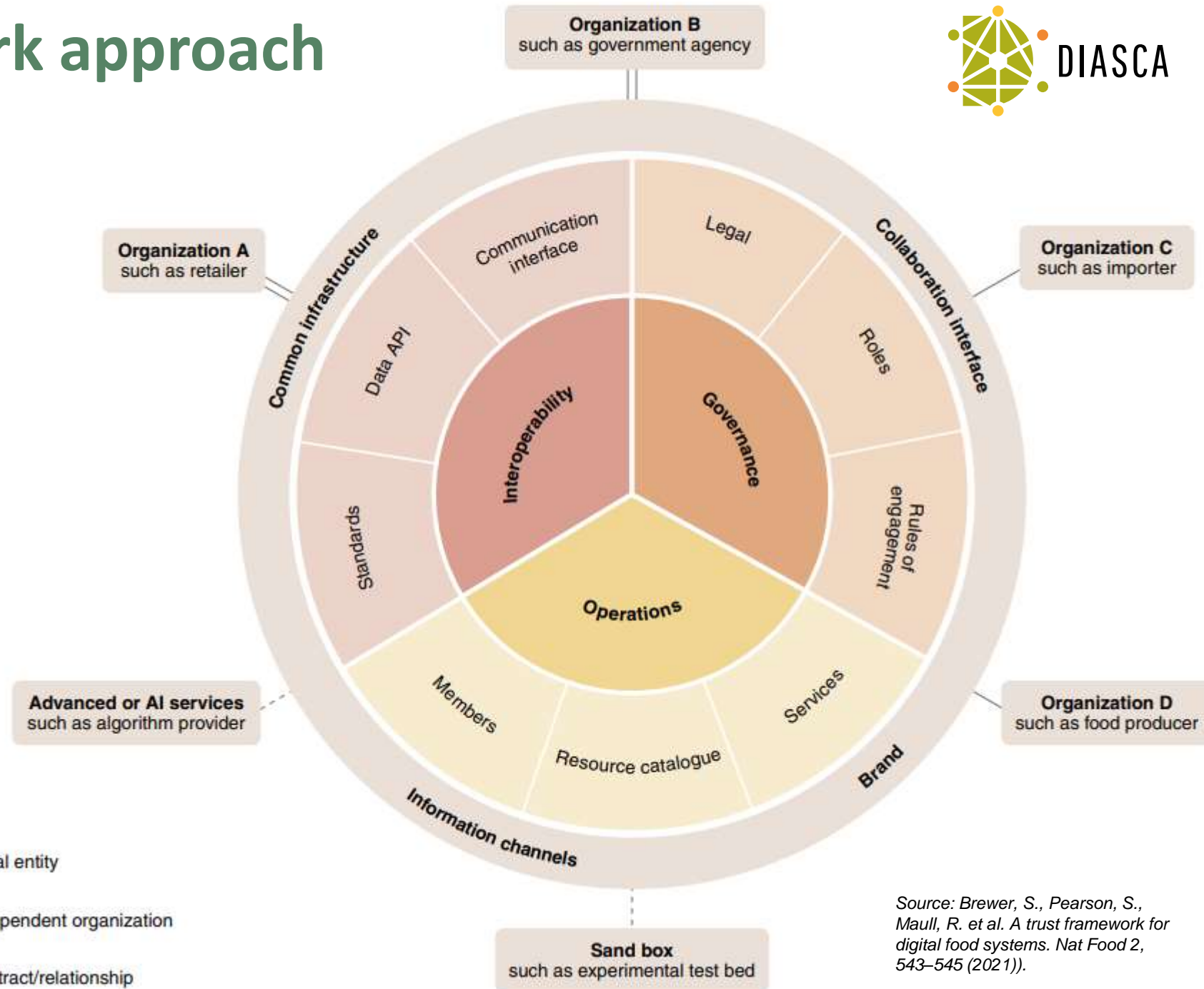




# Trust Framework approach



- Shared governance and services to advance common interests
- DPI Prototype implementation



Source: Brewer, S., Pearson, S., Maull, R. et al. A trust framework for digital food systems. *Nat Food* 2, 543–545 (2021)).



# Working Groups



Global exchange on country-level activities, resuming from 2025

## Forest Monitoring

- EUDR DPI Prototype Exchange
- Data standard to facilitate efficient forest monitoring data exchange



## Living Income

- Income Standardization User Guide & Interoperability Model.
- Groundwork for CSDDD



## Traceability & Governance

- Identify and validate key replicable standards, digital solutions, and critical capabilities
- Supply chain interoperability & collaborative governance



→ Register at [diasca.org](https://diasca.org)





# In-Country Collaboration & Alignment



- Public Private Engagement
- Trust Framework
- Joint declaration on DPI
- Prototype implementation (geolocation asset registry, WHISP, INATrace etc.)





# In-Country Collaboration & Alignment



**FOREST DATA**  
Partnership



- Public Private Engagement, run by WRI
- National pilot on DPI prototype implementation (geolocation asset registry, WHISP etc.) and data aggregation, harmonization, connectivity
- Develop and build consensus on data standards and review methods
- Alignment with National Dashboard



Sustainable  
Agricultural  
Supply Chains  
Initiative

[lars.kahnert@giz.de](mailto:lars.kahnert@giz.de)  
[diasca@giz.de](mailto:diasca@giz.de)

<http://diasca.org>

SASI – Sustainable Agricultural Supply Chains Initiative by

**giz** Deutsche Gesellschaft  
für Internationale  
Zusammenarbeit (GIZ) GmbH

On behalf of



Federal Ministry  
for Economic Cooperation  
and Development

# Credits

[https://www.flaticon.com/free-icon/team\\_1283342](https://www.flaticon.com/free-icon/team_1283342)

[https://www.flaticon.com/free-icon/construction\\_852697](https://www.flaticon.com/free-icon/construction_852697)

[https://www.flaticon.com/free-icon/database\\_9542653](https://www.flaticon.com/free-icon/database_9542653)

[https://www.flaticon.com/free-icon/standard\\_5261174](https://www.flaticon.com/free-icon/standard_5261174)

[https://www.flaticon.com/free-icon/identify\\_5360934](https://www.flaticon.com/free-icon/identify_5360934)

[https://www.flaticon.com/free-icon/rules\\_2046915](https://www.flaticon.com/free-icon/rules_2046915)

[https://www.flaticon.com/free-icon/communities\\_4350908](https://www.flaticon.com/free-icon/communities_4350908)