

Chad



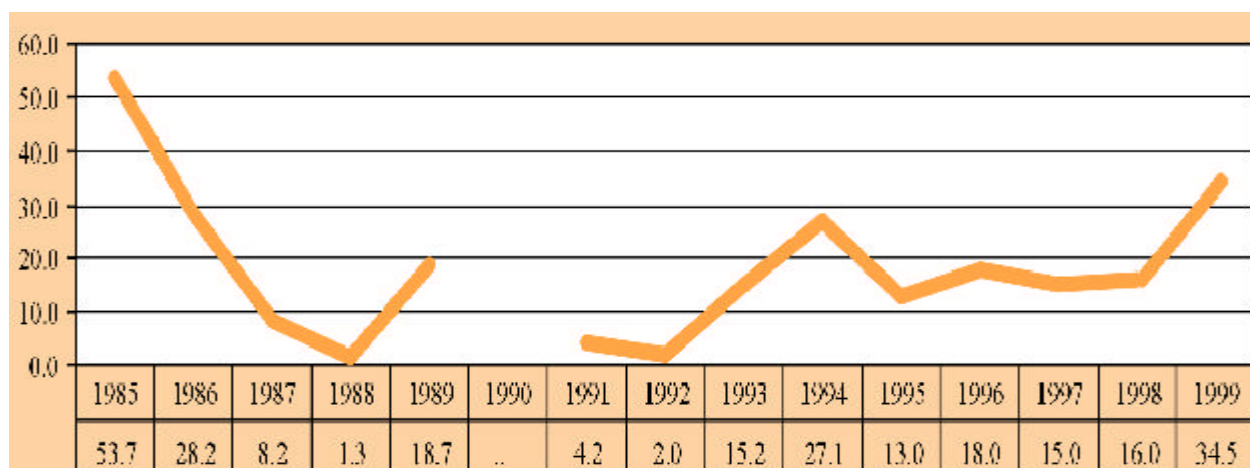
Area ('000 km²):		1,284.0
Population (millions):	2000	7.3
Capital city:		N'Djamena
Official language:		French and Arabic
Currency:		CFA franc
Exchange rate (period average):	1999	CFAfr615.7=\$1
GDP in current prices (millions of dollars):	1999	1,573.8
Exports of goods and services (millions of dollars):	1996	325.5
Imports of goods and services (millions of dollars):	1996	521.2
Official development assistance (millions of dollars):	1999	64.5
External debt (millions of dollars):	1998	1,091

Inward FDI: geographical breakdown, by source (Millions of dollars)

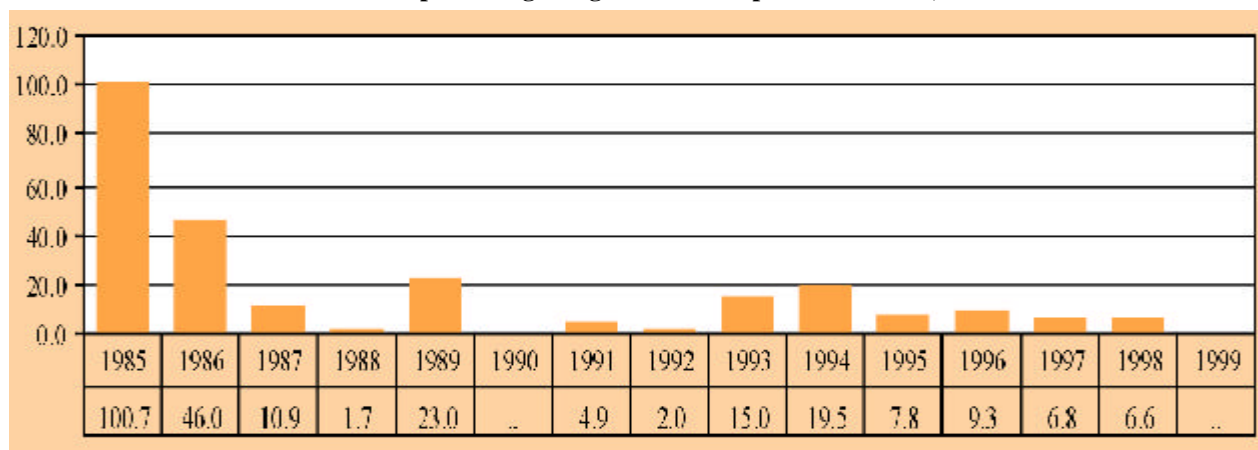
Region/economy	Inflows	Year	Inward stock	Year
Developed economies				
Belgium/Luxembourg	-0.0	1998
France	15.0	1999
United States	16.0	1997	128.0	1997
Developing economies				
China	0.08 ^a	1995

^a Approval data.

FDI inflows, 1985-1999 (Millions of dollars)



FDI inflows as a percentage of gross fixed capital formation, 1985-1999



Largest cross-border M&A deals, 1987-1999

Acquired company	Industry	Acquiring company	Home economy	Value (\$ million)	Year
Banque Tchadienne Credit Depot	Commercial banks, bank holding companies	Investor Group	France

BITs, 1 January 2000

Economy	Date of signature
Egypt	14 March 1998
France	13 August 1960
Germany	11 April 1967
Italy	11 June 1969
Switzerland	21 February 1967

Largest foreign affiliates, 1999

Company	Home economy	Industry	Sales (\$million)	Employment	Year of establishment
Manufacture de Cigarettes Du Tchad	France	Cigarettes	8.0	127	..
Scho Tchad	France	Industrial machinery and equipment	4.3	16	..
Tchad Motors Industries SA	France	New and used car dealers	3.2	20	..

Other relevant information

- **Membership of relevant international agreements as of April 2001:** ICSID, TRIMs, GATS, TRIPS, Country in the process of fulfilling membership requirements to the MIGA.
- **Address and website of investment promotion agency:** Banque Commerciale du Chari
B.P. 757 N'Djamena Tchad; Tel: (235) 51 5231 Fax: (235) 51 5005
- **Fortune 500 investors:** Groupe Pinault-Printemps.
- **Member of WAIPA as of March 2001:** No