

# Guinea-Bissau



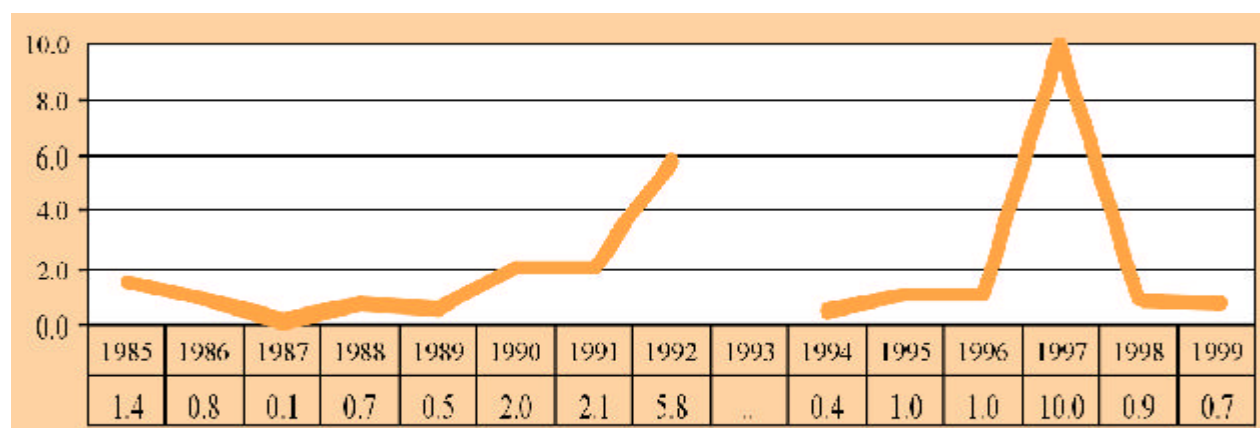
<b>Area ('000 km<sup>2</sup>):</b>		36.1
<b>Population (millions):</b>	2000	1.2
<b>Capital city:</b>		Bissau
<b>Official language:</b>		Portuguese
<b>Currency:</b>		CFA franc
<b>Exchange rate (period average):</b>	1999	CFAfr615.7=\$1
<b>GDP in current prices (millions of dollars):</b>	1999	220.7
<b>Exports of goods and services (millions of dollars):</b>	1997	65.7
<b>Imports of goods and services (millions of dollars):</b>	1997	88.6
<b>Official development assistance (millions of dollars):</b>	1999	32.1
<b>External debt (millions of dollars):</b>	1998	964.4

## Inward FDI: geographical breakdown, by source (Millions of dollars)

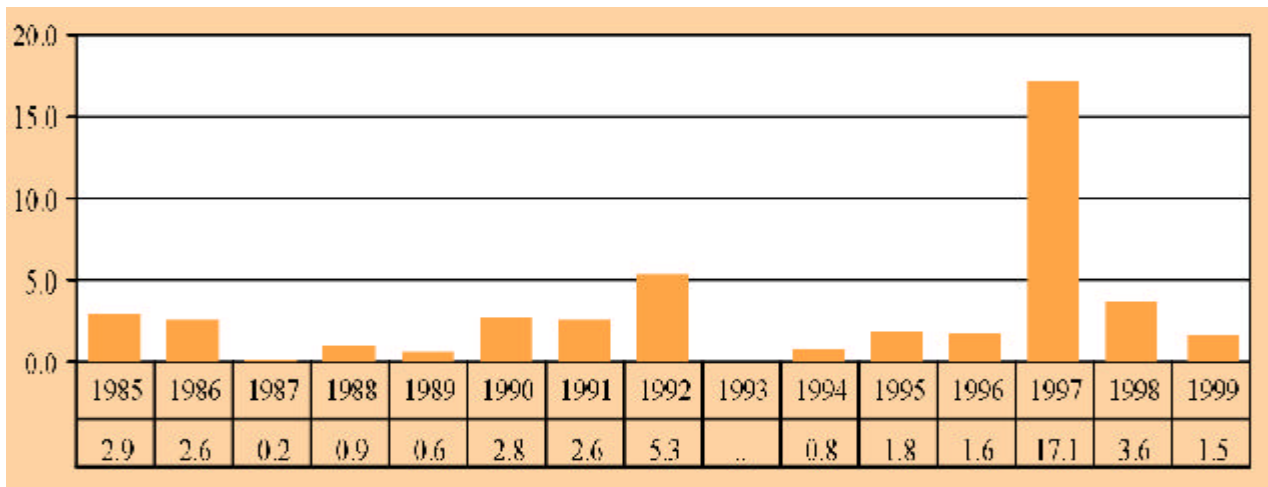
Region/economy	Inflows	Year	Inward stock	Year
<b>Developed economies</b>				
Belgium/Luxembourg	0.03	1992	..	..
France	0.9	1991	..	..
Portugal	0.3	1994	..	..
Sweden	0.2	1986	..	..
<b>Developing economies</b>				
China	..	..	4.3 <sup>a</sup>	1995

<sup>a</sup> Approval data.

## FDI inflows, 1985-1999 (Millions of dollars)



FDI inflows as a percentage of gross fixed capital formation, 1985-1999



## BITs, 1 January 2000

Economy	Date of signature
Portugal	24 June 1991

## Largest foreign affiliates, 1999

Company	Homeeconomy	Industry	Sales (\$million)	Employment	Year of establishment
Petromar Sociedade De Abastecimento Petroliferos Lda	Portugal	Petroleum products except bulk terminals	..	81	..

## Other relevant information

- **Membership of relevant international agreements as of April 2001:** ICSID, TRIMs, GATS, TRIPS, Country in the process of fulfilling membership requirements to the MIGA.
- **Address and website of investment promotion agency:** None
- **Fortune 500 investors:** None
- **Member of WAIPA as of March 2001:** No