

# COMMODITY PRICE BULLETIN

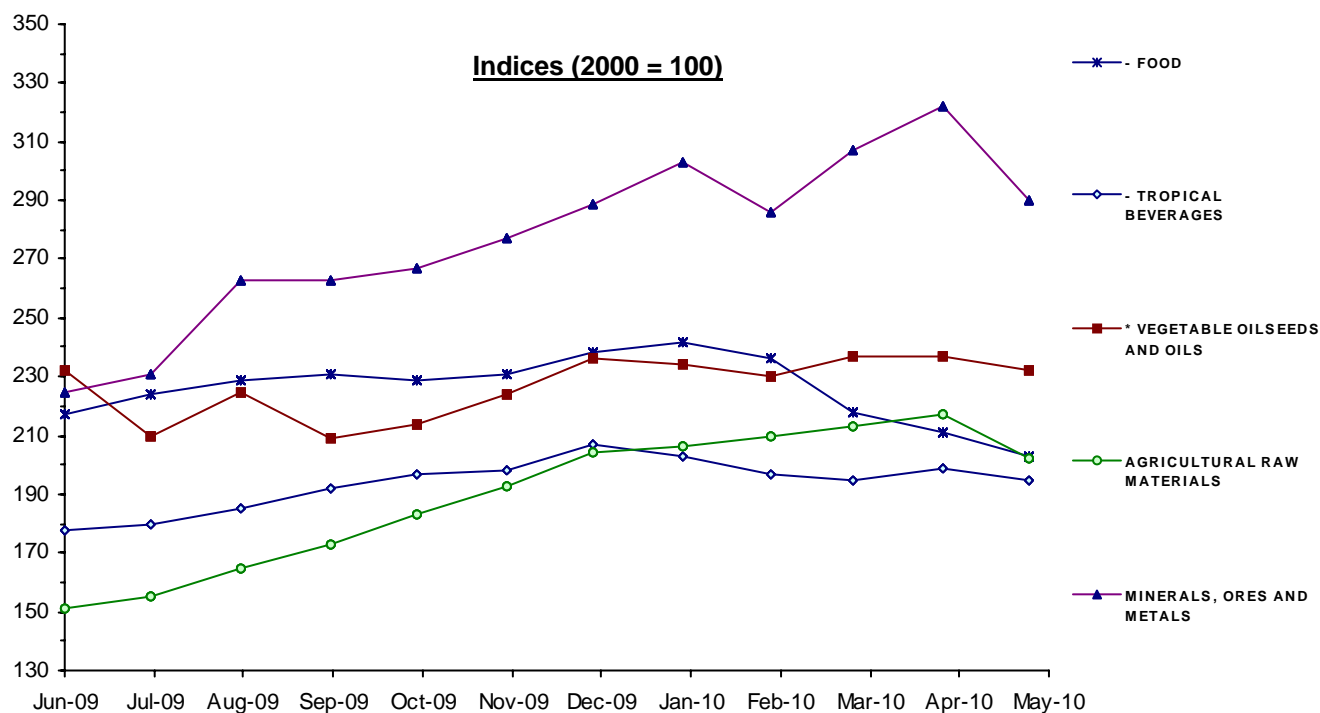
June 2010

# update

## MONTHLY INDICES OF FREE MARKET PRICES IN US DOLLARS

2000 = 100

Moving averages		Jun 09	Jul 09	Aug 09	Sep 09	Oct 09	Nov 09	Dec 09	Jan 10	Feb 10	Mar 10	Apr 10	May 10
Jun 08 to May 09	Jun 09 to May 10												
<b>ALL FOOD</b>													
<b>216</b>	<b>223</b>	215	218	224	225	224	228	235	237	231	218	213	205
<b>* TROPICAL BEVERAGES AND FOOD</b>													
<b>214</b>	<b>222</b>	213	219	224	227	225	228	235	238	232	216	210	202
<b>- TROPICAL BEVERAGES</b>													
<b>173</b>	<b>194</b>	178	180	185	192	197	198	207	203	197	195	199	195
<b>- FOOD</b>													
<b>218</b>	<b>226</b>	217	224	229	231	229	231	238	242	236	218	211	203
<b>* VEGETABLE OILSEEDS AND OILS</b>													
<b>238</b>	<b>227</b>	232	210	225	209	214	224	236	234	230	237	237	232
<b>AGRICULTURAL RAW MATERIALS</b>													
<b>174</b>	<b>189</b>	151	155	165	173	183	193	204	206	210r	213r	217r	202
<b>MINERALS, ORES AND METALS</b>													
<b>259</b>	<b>277</b>	225r	231r	263r	263r	267r	277r	289r	303r	286r	307r	322r	290
<b>PRICE INDEX - ALL GROUPS IN CURRENT DOLLARS</b>													
<b>222</b>	<b>232</b>	209r	213r	226r	228r	230r	236r	245r	250r	243r	241r	242r	227
<b>PRICE INDEX - ALL GROUPS IN SDRs</b>													
<b>190</b>	<b>198</b>	179r	182r	192r	191r	191r	195r	205r	212r	209r	209r	211r	203



Source: UNCTAD Commodity Price Statistics



# COMMODITY PRICE BULLETIN

June 2010

update

**MONTHLY AVERAGE PRICES****1 - FOOD, TROPICAL BEVERAGES AND VEGETABLE OILSEEDS AND OILS**

Moving averages		Jun 09	Jul 09	Aug 09	Sep 09	Oct 09	Nov 09	Dec 09	Jan 10	Feb 10	Mar 10	Apr 10	May 10
Jun 08 to May 09	Jun 09 to May 10												
<b>WHEAT 1</b>		ARGENTINA, TRIGO PAN UPRIVER, FOB										US DOLLARS / TONNE	
<b>238</b>	<b>225</b>	227	236	225	208	213	217	240	234	218	211	226	242
<b>WHEAT 2</b>		US, NO. 2, HARD RED WINTER (ORDINARY), FOB GULF										US DOLLARS / TONNE	
<b>280</b>	<b>215</b>	261	233	216	200	209	227	221	211	206	204	201	193
<b>MAIZE 3</b>		ARGENTINA, ROSARIO, FOB										US DOLLARS / TONNE	
<b>187.5</b>	<b>169.6</b>	187.0	164.0	166.0	162.0	172.0	174.0	178.0	175.0	164.0	161.0	163.0	169.0
<b>MAIZE 4</b>		US, NO. 3 YELLOW, FOB GULF										US DOLLARS / TONNE	
<b>202.2</b>	<b>169.6</b>	184.0	158.0	160.0	159.0	174.0	182.0	181.0	177.0	167.0	164.0	161.0	168.0
<b>RICE</b>		THAILAND, WHITE 5% BROKEN, FOB BANGKOK										US DOLLARS / TONNE	
<b>652</b>	<b>565</b>	549	623	576	594	566	566	606	598	585	544	505	470
<b>SUGAR</b>		AVERAGE OF I.S.A. PRICES, FOB CARIBBEAN PORTS										US CENTS / LB.	
<b>13.27</b>	<b>20.91</b>	16.43	18.43	22.44	23.06	22.64	22.26	23.53	26.47	25.39	18.66	16.45	15.20
<b>BEEF</b>		AUSTRALIA & N. ZEALAND, US IMPORT PRICE, FOB ENTRY PORT										US CENTS / LB.	
<b>119.9</b>	<b>134.8</b>	122.0	124.0	124.0	124.0	121.0	125.0	127.0	134.0	142.0	152.0	165.0	158.0
<b>BANANAS</b>		CENTRAL AMERICA AND ECUADOR, FOB US PORTS										US CENTS / LB.	
<b>38.36</b>	<b>37.38</b>	38.55	37.55	37.87	37.05	36.73	37.87	36.33	35.51	35.88	38.10	37.56	39.55
<b>PEPPER</b>		WHITE SARAWAK/MUNTOK, FAQ SPOT, EUROPEAN MARKET										US DOLLARS / TONNE	
<b>4569</b>	<b>5091</b>	4468	4413	4914	5164	5198	5212	5207	5112	5120	5204	5470	5612
<b>SOYBEAN MEAL</b>		44/45% PROTEIN, FOB EX-MILL HAMBURG										US DOLLARS / TONNE	
<b>412</b>	<b>414</b>	448	439	444	444	430	425	425	407	393	389	376	353
<b>FISH MEAL</b>		ANY ORIGIN, 64/65% PROTEIN, FREE CARRIER PRICE, BREMEN										US DOLLARS / TONNE	
<b>1087</b>	<b>1520</b>	1140	1208	1272	1348	1427	1526	1651	1681	1627	1672	1873	1821
<b>COFFEE 1</b>		COLOMBIAN MILD ARABICAS, EX-DOCK NEW YORK (I.C.A.)										US CENTS / LB.	
<b>157.1</b>	<b>193</b>	195.25	192.11	181.61	169.90	175.16	180.08	199.38	214.55	208.36	206.37	195.18	197.76
<b>COFFEE 2</b>		BRAZILIAN AND OTHER ARABICAS, EX-DOCK NEW YORK (I.C.A.)										US CENTS / LB.	
<b>111.4</b>	<b>120.4</b>	109.81	104.55	114.01	114.12	122.84	126.21	131.23	128.11	121.61	125.28	124.94	121.66
<b>COFFEE 3</b>		OTHER MILD ARABICAS, EX-DOCK NEW YORK (I.C.A.)										US CENTS / LB.	
<b>133.6</b>	<b>154.3</b>	145.17	137.87	146.87	145.67	151.95	150.23	155.86	154.40	155.92	162.13	171.32	174.21
<b>COFFEE 4</b>		ROBUSTAS, EX-DOCK NEW YORK (I.C.A.)										US CENTS / LB.	
<b>92.69</b>	<b>75.09</b>	75.88	74.83	75.04	77.31	76.68	73.08	74.68	75.09	73.49	72.53	76.26	76.21
<b>COFFEE 5</b>		COMPOSITE INDICATOR PRICE 1976 VERSION										US CENTS / LB.	
<b>113.2</b>	<b>114.7</b>	110.53	106.35	110.96	111.49	114.32	111.66	115.27	114.75	114.71	117.33	123.79	125.21
<b>COFFEE 6</b>		OTHER MILD ARABICAS, EX-DOCK BREMEN/HAMBURG (I.C.A.)										US CENTS / LB.	
<b>135.9</b>	<b>158.0</b>	153.14	143.14	151.86	150.74	156.32	153.60	160.09	161.92	159.00	166.09	167.95	172.72
<b>COFFEE 7</b>		ROBUSTAS, EX-DOCK NEW YORK-LE HAVRE/MARSEILLES (I.C.A.)										US CENTS / LB.	
<b>91.10</b>	<b>70.14</b>	73.16	71.09	71.76	73.04	72.86	68.86	68.86	69.05	66.74	66.16	70.55	69.49



# COMMODITY PRICE BULLETIN

June 2010

update

**MONTHLY AVERAGE PRICES****1 - FOOD, TROPICAL BEVERAGES AND VEGETABLE OILSEEDS AND OILS**

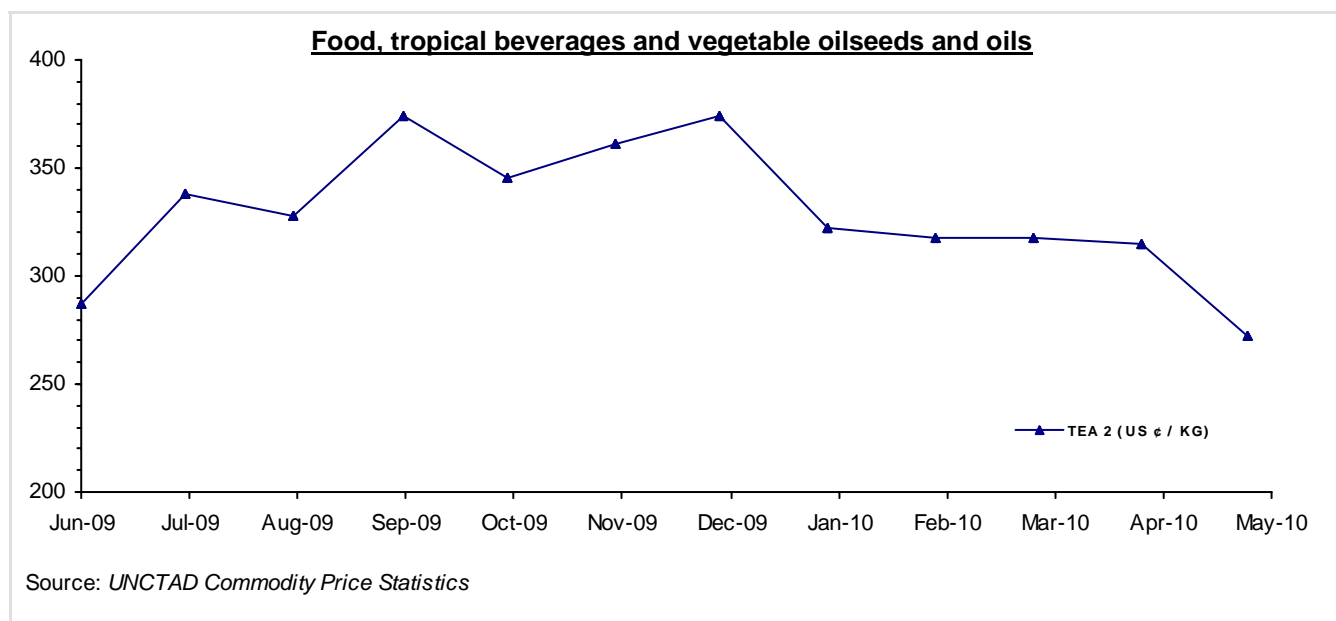
Moving averages		Jun 09	Jul 09	Aug 09	Sep 09	Oct 09	Nov 09	Dec 09	Jan 10	Feb 10	Mar 10	Apr 10	May 10
Jun 08 to May 09	Jun 09 to May 10												
<b>COFFEE 8</b>		ICO COMPOSITE INDICATOR PRICE											US CENTS / LB.
<b>116.4</b>	<b>121.8</b>	119.05	112.90	117.45	116.40	121.09	119.67	124.96	126.85	123.37	125.30	126.89	128.10
<b>COCOA 1</b>		AVERAGE OF DAILY PRICES, N.Y./LONDON, 3 MONTHS FUTURES											US CENTS / LB.
<b>117.4</b>	<b>144.2</b>	122.49	126.62	134.11	142.56	152.98	153.50	158.65	159.89	148.62	140.15	146.12	144.18
<b>COCOA 1 SDR</b>		AS ABOVE											SDRs / TONNE
<b>1685</b>	<b>2046</b>	1747.94	1798.34	1894.99	1991.62	2121.45	2115.24	2209.62	2252.53	2130.15	2022.80	2123.39	2147.34
<b>TEA 2</b>		KENYA, BEST PEKOE FANNINGS 1, MOMBASA AUCTION PRICE											US CENTS / KG.
<b>277.3</b>	<b>329.3</b>	287.0	338.0	328.0	374.0	345.0	361.0	374.0	322.0	318.0	318.0	315.0	272.0
<b>SOYBEANS</b>		US, NO. 2 YELLOW, CIF ROTTERDAM											US DOLLARS / TONNE
<b>460</b>	<b>437</b>	503	463	470	421	427	440	450	436	406	408	411	407
<b>SOYBEAN OIL</b>		DUTCH, FOB EX-MILL											US DOLLARS / TONNE
<b>1004</b>	<b>896</b>	896	837	886	846	897	931	935	923	914	915	903	865
<b>SUNFLOWER OIL</b>		EU, FOB, N.W. EUROPEAN PORTS											US DOLLARS / TONNE
<b>1078</b>	<b>899</b>	907	804	820	809	846	921	986	968	948	949	924	910
<b>GROUNDNUT OIL</b>		ANY ORIGIN, CIF ROTTERDAM											US DOLLARS / TONNE
<b>1727</b>	<b>1233</b>	1154	1149	1131	1120	1148	1116	1192	1316	1380	1380	1361	1353
<b>COPRA</b>		PHILIPPINES/INDONESIA, CIF N.W. EUROPEAN PORTS											US DOLLARS / TONNE
<b>623</b>	<b>523</b>	480	448	492	466	470	493	509	524	538	608	628	624
<b>COCONUT OIL</b>		PHILIPPINES, CIF ROTTERDAM											US DOLLARS / TONNE
<b>936</b>	<b>788</b>	747	686	747	701	706	729	768	784	798	921	939	932
<b>PALM KERNEL OIL</b>		MALAYSIA, CIF ROTTERDAM											US DOLLARS / TONNE
<b>820</b>	<b>830</b>	741	666	729	704	726	753	829	878	894	995	1020	1030
<b>PALM OIL</b>		INDONESIA, 5% FFA, CIF N.W. EUROPEAN PORTS											US DOLLARS / TONNE
<b>731</b>	<b>752</b>	726	640	723	674	680	725	792	793	798	832	830	811
<b>COTTONSEED OIL</b>		UNITED STATES, PBSY, FOB GULF											US DOLLARS / TONNE
<b>1130</b>	<b>866</b>	875	802	851	797	847	915	925	905	888	875	870	837



June 2010

**MONTHLY AVERAGE PRICES**

**1 - FOOD, TROPICAL BEVERAGES AND VEGETABLE OILSEEDS AND OILS**



June 2010

**MONTHLY AVERAGE PRICES****2 - AGRICULTURAL RAW MATERIALS**

Moving averages		Jun 09	Jul 09	Aug 09	Sep 09	Oct 09	Nov 09	Dec 09	Jan 10	Feb 10	Mar 10	Apr 10	May 10
Jun 08 to May 09	Jun 09 to May 10												
<b>LINSEED OIL</b>													
<b>1241</b>	<b>1045</b>	1027	976	1005	995	1115	1156	1195	1156	1005	1007	974	929
		ANY ORIGIN, EX-TANK, ROTTERDAM										US DOLLARS / TONNE	
<b>TOBACCO</b>													
<b>3881</b>	<b>4253</b>	4254	4247	4279	4279	4336	4434	4468	4467	4390	3983	3952r	3952e
		UNMANUFACTURED, US IMPORT UNIT VALUE										US DOLLARS / TONNE	
<b>COTTON 2</b>													
<b>94.51</b>	<b>92.68</b>	85.11	82.59	81.34	85.00	84.05	90.27	96.18	100.00	100.00	100.00	102.27	105.38
		SUDAN, BARAKAT, X4B, C/F FAR EASTERN										US CENTS / LB.	
<b>COTTON 3</b>													
<b>64.46</b>	<b>75.97</b>	62.33	65.58	68.82	69.57	72.98	78.25	81.46	62.33	81.25r	88.71r	89.65r	90.68
		US, MEMPHIS EASTERN, MIDD. 1-3/32", C/F FAR EASTERN										US CENTS / LB.	
<b>COTTON 4</b>													
<b>63.59</b>	<b>76.93</b>	60.39	65.03	69.01	70.24	73.60	78.34	81.55	78.16	80.48	87.79	88.65	89.96
		US, MEMPHIS/ORLEANS/TEXAS, MIDD.1", C/F FAR EASTERN										US CENTS / LB.	
<b>COTTON 5</b>													
		..	..	..	..	..	..	..	..	..	..	..	..
		PAKISTAN, SIND/PUNJAB, AFZAL 1-1/32", CIF NORTH EUROPE										US CENTS / LB.	
<b>COTTON 6</b>													
<b>63.49</b>	<b>74.21</b>	61.40	64.80	64.25	64.05	66.80	71.80	76.00	77.40	80.05	85.80	88.08	90.07
		INDEX A (M 1-3/32"), COTTON OUTLOOK, LIVERPOOL										US CENTS / LB.	
<b>COTTON 7</b>													
		..	..	..	..	..	..	..	..	..	..	..	..
		INDEX B (COARSE COUNT), COTTON OUTLOOK, LIVERPOOL										US CENTS / LB.	
<b>COTTON 8</b>													
<b>125.4</b>	<b>124.3</b>	109.09	105.91	105.00	105.09	111.00	125.41	130.76	135.00	135.00	137.39	144.05	148.14
		EGYPT, GIZA 88 GOOD+3/8, C/F FAR EASTERN										US CENTS / LB.	
<b>WOOL 2</b>													
<b>7710</b>	<b>9129</b>	7417.3	7636.2	8225.7	8675.8	9448.5	9539.5	9700.8	10032.2	9728.1	10038.6	9918.3	9191.3
		AUSTRALIAN FINE WOOL 19 MICRON										US DOLLARS / TONNE	
<b>WOOL 4</b>													
<b>5730</b>	<b>7447</b>	6091.5	6093.0	6554.9	6909.1	7435.9	7568.0	7804.0	8427.4	8187.2	8478.4	8179.7	7639.4
		AUSTRALIAN COARSE WOOL 23 MICRON										DOLLARS / TONNE	
<b>JUTE</b>													
<b>504</b>	<b>745</b>	610	575	525	550	630	650	650e	800	825r	1020r	1050	1050e
		BANGLADESH, BWD, FOB MONGLA										US DOLLARS / TONNE	
<b>SISAL 1</b>													
<b>1034</b>	<b>888</b>	..	700	700e	753	803	853	853	985e	985e	965	1060r	1110
		TANZANIA/KENYA, NO.2 & 3 LONG, CIF MAIN EUROPEAN PORTS										US DOLLARS / TONNE	
<b>SISAL 2</b>													
<b>973</b>	<b>820</b>	775	650	650	700	750	800	800	885e	885e	900	1000	1050
		TANZANIA/KENYA, NO.3 & UG, CIF MAIN EUROPEAN PORTS										US DOLLARS / TONNE	
<b>CATTLE HIDES 2</b>													
<b>50</b>	<b>60</b>	37	48	58	55	54	62	63	65	68	69	72	72
		CHICAGO, PACKER'S HEAVY NATIVE STEERS, FOB										US CENTS / LB.	
<b>NON-CONIFEROUS WOODS</b>													
<b>134.4</b>	<b>129.2</b>	130.5	129.4	129.5	130.8	128.6	126.2	126.0	125.4	125.1	126.8	135.8r	136.5
		UK, IMPORT PRICE INDEX (DOLLAR EQUIVALENT)										INDEX 2005=100	
<b>TROPICAL LOGS 1</b>													
<b>476.4</b>	<b>426.4</b>	406.2	408.5	413.8	422.3	444.5	451.2	444.3	442.6	424.3	427.6	429.5	401.4
		SAPELE, LM, FOB UK IMPORT PRICE										US DOLLARS / CUBIC METER	
<b>TROPICAL LOGS 2</b>													
<b>192.4</b>	<b>264.1</b>	221.3	224.0	228.3	269.4	277.8	283.4	276.8	278.4	273.7	285.1	281.9	269.7
		GABON, OKOUME, LM, FOB										US DOLLARS / CUBIC METER	

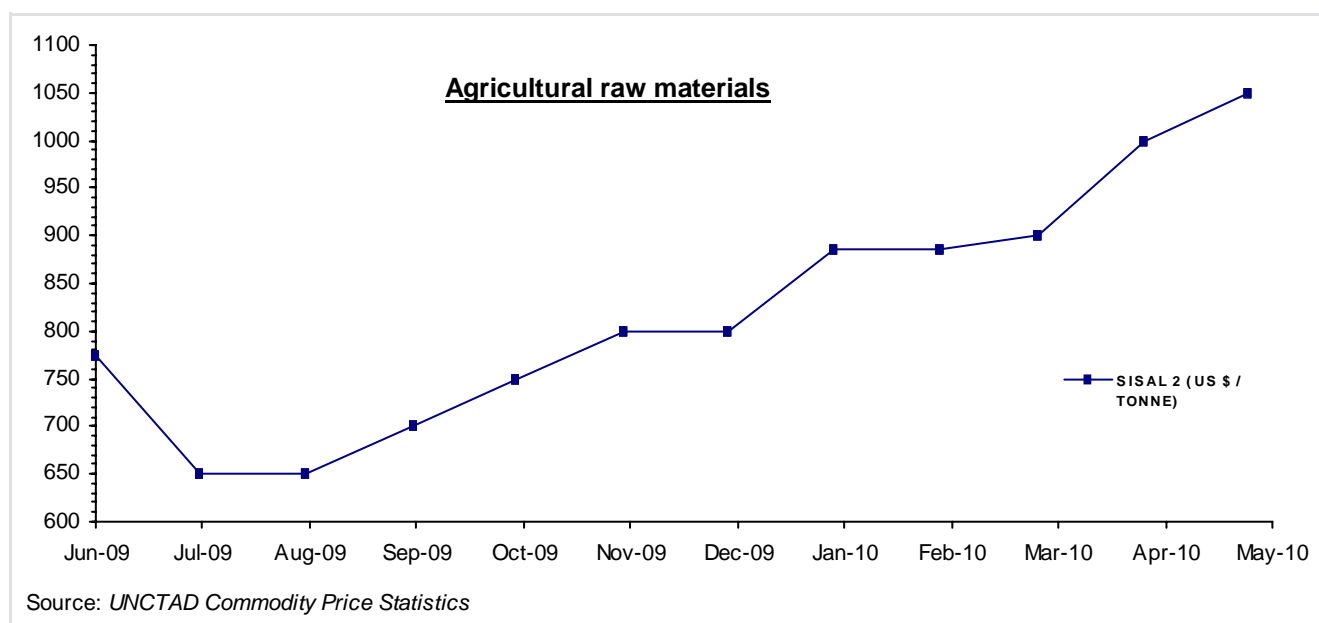


June 2010

## MONTHLY AVERAGE PRICES

### 2 - AGRICULTURAL RAW MATERIALS

Moving averages		Jun 09	Jul 09	Aug 09	Sep 09	Oct 09	Nov 09	Dec 09	Jan 10	Feb 10	Mar 10	Apr 10	May 10
Jun 08 to May 09	Jun 09 to May 10												
<b>TROPICAL SAWNWOOD</b>		MALAYSIA, DARK RED MERANTI, CIF FRENCH PORTS										US DOLLARS / CUBIC METER	
<b>550</b>	<b>550</b>	550.0e	..	..	..	..	..	..	..	..	..	..	..
<b>TROPICAL SAWNWOOD 1</b>		MALAYSIA, MERANTI SEL/BTR, CIF PLUS COMMISSION UK										STERLING POUNDS / CUBIC METER	
<b>517.8</b>	<b>501.3</b>	500.0	465.0	465.0	480.0	500.0	495.0	490.0	490.0	500.0	525.0	535.0	570.0
<b>PLYWOOD 1</b>		SOUTHEAST ASIA, LAUAN, WHOLESALE, SPOT TOKYO										US CENTS / SHEET	
<b>615.2</b>	<b>560.4</b>	562.74	561.90	561.60	560.70	559.32	558.60	557.20	557.20	557.20	557.20	564.70	566.80
<b>PLYWOOD 1 CM</b>		AS ABOVE										US DOLLARS / CUBIC METER	
<b>928.6</b>	<b>846</b>	849.44	848.18	847.72	846.36	844.27	843.20	841.08	841.08	841.08	841.08	852.40	855.57
<b>RUBBER 1</b>		IN BALES, NO. 1 RSS, FOB SINGAPORE										SINGAPORE CENTS / KG.	
<b>279.7</b>	<b>182.3</b>	182.3e	..	..	..	..	..	..	..	..	..	..	..
<b>RUBBER 1 \$</b>		AS ABOVE										US DOLLARS / TONNE	
<b>1944</b>	<b>1256</b>	1256.0e	..	..	..	..	..	..	..	..	..	..	..
<b>RUBBER 4</b>		NO.3 RSS, MONTHLY AVERAGE OF WEIGHTED DAILY FUTURE PRICES										US CENTS / KG	
<b>207.2</b>	<b>271.2</b>	167.5	174.9	205.9	217.2	235.2	254.2	280.1	309.2	312.7	333.9	396.5	366.8
<b>RUBBER 3</b>		TSR20 NEW YORK										US DOLLARS / TONNE	
<b>2184</b>	<b>2673</b>	1668.00	1728.00	1991.00	2234.00	2433.00	2624.10	2979.40	3202.80	3287.80	3373.60	3476.50	3074.60



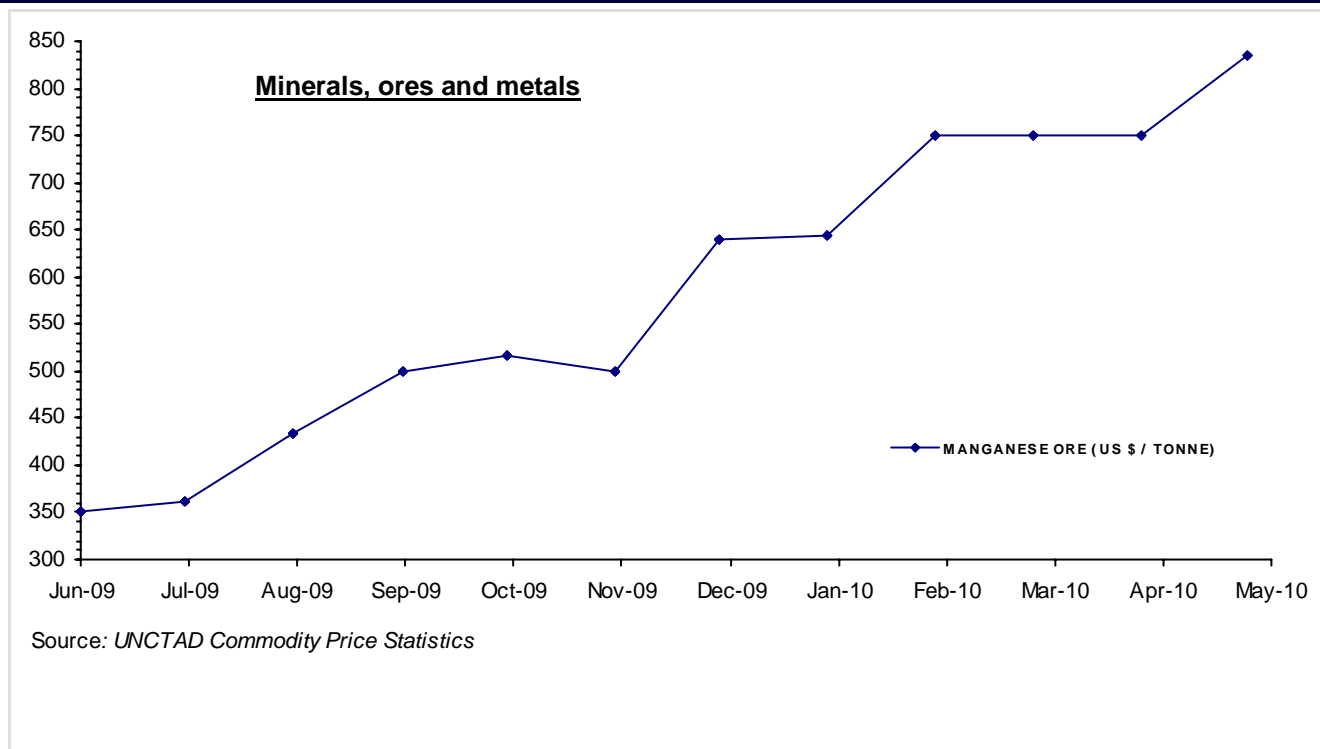


June 2010

**MONTHLY AVERAGE PRICES**

**3 - MINERALS, ORES AND METALS**

Moving averages		Jun 09	Jul 09	Aug 09	Sep 09	Oct 09	Nov 09	Dec 09	Jan 10	Feb 10	Mar 10	Apr 10	May 10
Jun 08 to May 09	Jun 09 to May 10												
<b>TUNGSTEN ORE</b>		MINIMUM CONTENT OF WO <sub>3</sub> 65%, CIF EUROPE										US DOLLARS / MTU OF WO <sub>3</sub>	
<b>158.3</b>	<b>150</b>	150.00	150.00	150.00	150.00	150.00	150.00	150.00	150.00	150.00	150.00	150.00	150.00
<b>GOLD</b>		LONDON, 99.5% FINE, AFTERNOON FIXING										US DOLLARS / TROY OUNCE	
<b>868.9</b>	<b>1070</b>	945.67	934.23	949.38	996.59	1043.16	1127.04	1134.72	1118.00	1095.40	1113.34	1148.69	1237.50
<b>SILVER</b>		HANDY & HARMAN, 99.9% GRADE REFINED, NEW YORK										US CENTS / TROY OUNCE	
<b>1310</b>	<b>1658</b>	1465.93	1338.64	1443.10	1639.12	1726.39	1787.68	1764.46	1775.05	1587.21	1715.50	1816.83	1840.96
<b>CRUDE PETROLEUM</b>		DUBAI, UK BRENT AND WTI AVERAGE, SPOT, FOB										US DOLLARS / BARREL	
<b>73.93</b>	<b>74.3</b>	69.10	64.70	71.60	68.40	74.10	77.60	74.90	77.10	74.80	79.30	84.18	75.77





June 2010

### NOTES AND SOURCES

---

#### Notes:

- a/ Agricultural Raw Materials: Indices revised as "Rubber TSR 20, New York" replaced "Rubber No.1, RSS".
- b/ Non-coniferous woods: UK, import price Index (dollar equivalent), new base year 2005=100 (ONS).
- c/ Discontinued series: Tropical Sawnwood: Malaysia, Dark Red Meranti, CIF French Ports.
- d/ New series: Tropical Sawnwood1: Malaysia, Meranti Tembaga, select & better, CIF plus commission UK.
- e/ Discontinued series: Rubber 1: In bales, No 1 RSS, FOB, Singapore.
- f/ New series: Rubber 4: No. 3 RSS, monthly average of weighted daily future prices (SICOM).

#### List of Sources:

*Cotton Outlook*, Liverpool, UK  
 Food and Agricultural Organization (FAO), Italy  
 International Cocoa Organization (ICCO), London, UK  
 International Coffee Organization (ICO), London, UK  
 International Grains Council (IGC), London, UK  
 International Monetary Fund (IMF), Washington D.C., USA  
 International Rubber Study Group (IRSG), London, UK  
 International Sugar Organization, London, UK  
 International Tropical Timber Organization (ITTO), Yokohama, Japan  
 Office for National Statistics (ONS), Newport, Wales, UK  
*Oil World*, Hamburg, Germany  
 Singapore Commodity Exchange Ltd (SICOM), Singapore  
*The Public Ledger*, London, UK  
 United States Department of Agriculture (USDA), Foreign Agriculture Service (FAS)  
 World Bank, Washington D.C., USA

#### Explanation of symbols:

- " e " estimated figure
- " r " revised figure
- " .. " not available including no quotation
- " // " break in the series

The Monthly Update and the historical series are available in the statistics section of the UNCTAD web site at [www.unctad.org](http://www.unctad.org) as well as in the *Handbook of Statistics* DVD.

If you have any questions or comments concerning price data, please do not hesitate to contact us:

E-mail: [statistics@unctad.org](mailto:statistics@unctad.org)