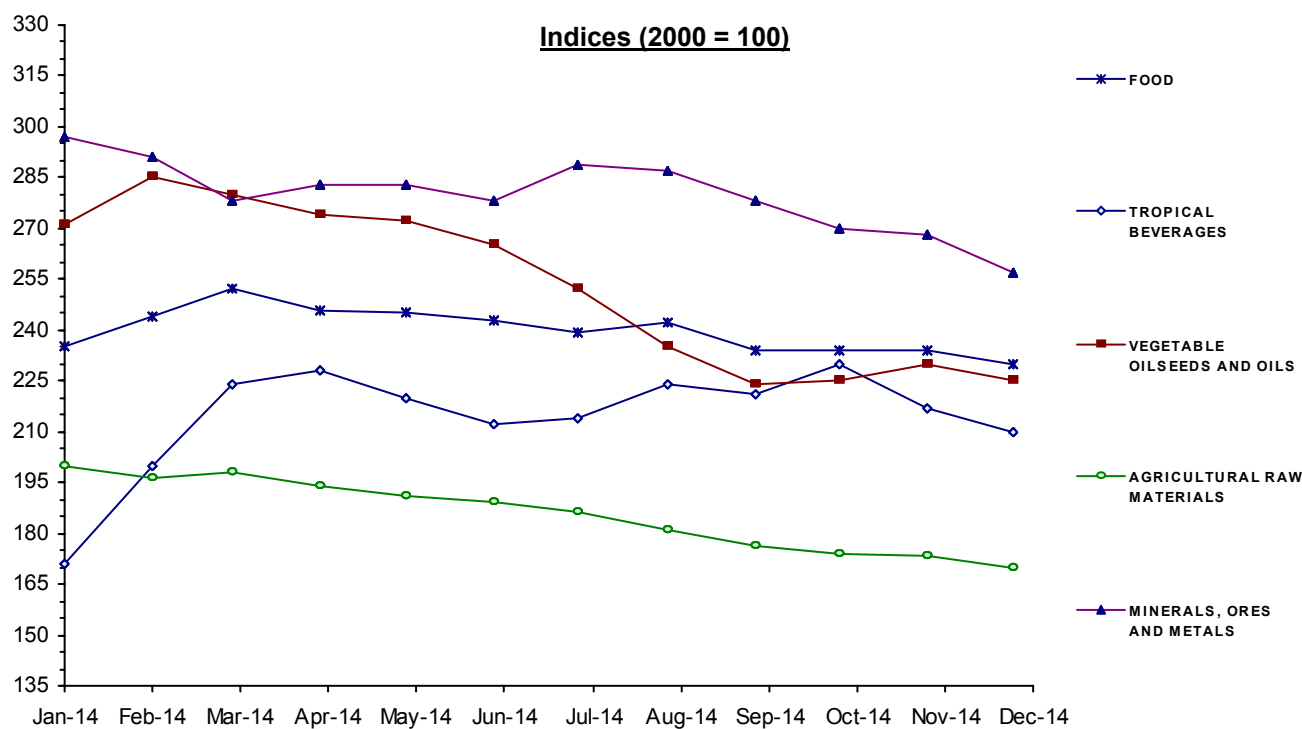


## MONTHLY INDICES OF FREE MARKET PRICES IN US DOLLARS

2000 = 100

Moving averages		Jan 14	Feb 14	Mar 14	Apr 14	May 14	Jun 14	Jul 14	Aug 14	Sep 14	Oct 14	Nov 14	Dec 14
Jan 13 to Dec 13	Jan 14 to Dec 14												
<b>ALL FOOD</b>													
<b>249</b>	<b>239</b>	233	244	252	248	246	243	238	240	232	233	232	228
<b>* TROPICAL BEVERAGES AND FOOD</b>													
<b>247</b>	<b>237</b>	228	239	249	244	242	240	237	240	232	234	233	228
<b>- TROPICAL BEVERAGES</b>													
<b>174</b>	<b>214</b>	171	200	224	228	220	212	214	224	221	230	217	210
<b>- FOOD</b>													
<b>255</b>	<b>240</b>	235	244	252	246	245	243	239	242	234	234	234	230
<b>* VEGETABLE OILSEEDS AND OILS</b>													
<b>269</b>	<b>253</b>	271	285	280	274	272	265	252	235	224	225	230	225
<b>AGRICULTURAL RAW MATERIALS</b>													
<b>206</b>	<b>186</b>	200	196	198	194	191	189	186	181	176	174	173	170
<b>MINERALS, ORES AND METALS</b>													
<b>306</b>	<b>280</b>	297	291	278	283	283	278	289	287	278	270	268	257
<b>PRICE INDEX - ALL GROUPS IN CURRENT DOLLARS</b>													
<b>258</b>	<b>243</b>	245	250	252	250	248	245	245	244	236	235	234	228
<b>PRICE INDEX - ALL GROUPS IN SDR'S</b>													
<b>225</b>	<b>211</b>	211	215	215	213	212	210	210	212	208	209	211	207



Source: UNCTAD, UNCTADstat Commodity Price Statistics



**MONTHLY AVERAGE PRICES**

**1 - FOOD, TROPICAL BEVERAGES AND VEGETABLE OILSEEDS AND OILS**

Moving averages		Jan 14	Feb 14	Mar 14	Apr 14	May 14	Jun 14	Jul 14	Aug 14	Sep 14	Oct 14	Nov 14	Dec 14
Jan 13 to Dec 13	Jan 14 to Dec 14												
<b>WHEAT 1</b>		ARGENTINA, TRIGO PAN UPRIVER, FOB										US DOLLARS / TONNE	
<b>325</b>	<b>301</b>	332	328	344	361	371	364	264	268	237	239	255	251
<b>WHEAT 2</b>		US, NO. 2, HARD RED WINTER (ORDINARY), FOB GULF										US DOLLARS / TONNE	
<b>322</b>	<b>302</b>	287	303	337	334	340	316	294	285	274	286	282	289
<b>MAIZE 3</b>		ARGENTINA, ROSARIO, FOB										US DOLLARS / TONNE	
<b>243.3</b>	<b>199.9</b>	213.0	218.0	225.0	228.0	223.0	204.0	192.0	180.3	165.0	169.0	182.0	199.0
<b>MAIZE 4</b>		US, NO. 3 YELLOW, FOB GULF										US DOLLARS / TONNE	
<b>264.3</b>	<b>205.6</b>	210.0	222.0	230.0	231.0	227.0	212.0	197.0	194.3	180.0	183.0	192.0	189.0
<b>RICE</b>		THAILAND, WHITE 5% BROKEN, FOB BANGKOK										US DOLLARS / TONNE	
<b>519</b>	<b>426</b>	441	447	434	410	404	415	428	440	437	433	419	411
<b>SUGAR</b>		AVERAGE OF I.S.A. PRICES, FOB CARIBBEAN PORTS										US CENTS / LB.	
<b>17.69</b>	<b>17</b>	15.63	16.61	17.90	17.61	18.27	18.17	18.26	17.22	16.02	16.75	16.19	15.33
<b>BEEF</b>		AUSTRALIA & N. ZEALAND, US IMPORT PRICE, FOB ENTRY PORT										US CENTS / LB.	
<b>183.6</b>	<b>224.2</b>	187.5	190.3	197.8	191.2	194.6	200.8	227.5	258.9	272.3	266.9	261.5	240.9
<b>BANANAS</b>		CENTRAL AMERICA AND ECUADOR, FOB US PORTS										US CENTS / LB.	
<b>42.02</b>	<b>42.27</b>	42.11	42.92	43.86	42.89	41.55	42.01	42.22	43.62	41.98	41.84	41.04	41.19
<b>PEPPER</b>		WHITE MUNTOK, FAQ SPOT										US DOLLARS / TONNE	
<b>9822</b>	<b>12642</b>	11470	11098	11757	12253	12220	12000	12404	13555	13673	13613	13700	13967
<b>SOYBEAN MEAL</b>		44/45% PROTEIN, FOB EX-MILL HAMBURG										US DOLLARS / TONNE	
<b>538</b>	<b>509</b>	539	571	582	563	547	531	477	485	456	440	460	453
<b>FISH MEAL</b>		ANY ORIGIN, 64/65% PROTEIN, FREE CARRIER PRICE, BREMEN										US DOLLARS / TONNE	
<b>1747</b>	<b>1718</b>	1531	1564	1653	1658	1651	1765	1806	1773	1723	1770	1836	1890
<b>COFFEE 1</b>		COLOMBIAN MILD ARABICAS, EX-DOCK USA (I.C.A.)										US CENTS / LB.	
<b>148.3</b>	<b>198.1</b>	133.51	173.96	213.63	223.79	213.45	196.14	194.91	210.42	202.77	219.27	203.71	191.53
<b>COFFEE 2</b>		BRAZILIAN AND OTHER ARABICAS, EX-DOCK USA (I.C.A.)										US CENTS / LB.	
<b>118</b>	<b>161.3</b>	107.49	142.75	174.89	182.89	170.89	154.02	154.00	171.99	168.11	181.58	169.10	157.87
<b>COFFEE 3</b>		OTHER MILD ARABICAS, EX-DOCK USA (I.C.A.)										US CENTS / LB.	
<b>141.1</b>	<b>202.9</b>	135.03	176.28	216.06	226.99	215.24	198.91	198.59	214.50	212.01	227.06	212.93	200.59
<b>COFFEE 4</b>		ROBUSTAS, EX-DOCK USA (I.C.A.)										US CENTS / LB.	
<b>100.5</b>	<b>105.6</b>	92.93	101.14	111.90	110.68	108.35	104.63	107.23	105.07	105.57	109.39	106.81	103.51
<b>COFFEE 5</b>		COMPOSITE INDICATOR PRICE 1976 VERSION										US CENTS / LB.	
<b>120.8</b>	<b>154.2</b>	113.98	138.71	163.98	168.84	161.80	151.77	152.91	159.79	158.79	168.23	159.87	152.05
<b>COFFEE 6</b>		OTHER MILD ARABICAS, EX-DOCK EU (I.C.A.)										US CENTS / LB.	
<b>138.4</b>	<b>199.1</b>	131.35	172.43	212.88	221.33	213.07	197.60	195.87	212.02	209.22	224.20	207.27	191.70
<b>COFFEE 7</b>		ROBUSTAS, EX-DOCK EU (I.C.A.)										US CENTS / LB.	
<b>92.95</b>	<b>99.47</b>	86.74	94.93	104.12	104.57	101.77	98.00	100.74	99.34	99.53	103.80	102.33	97.76

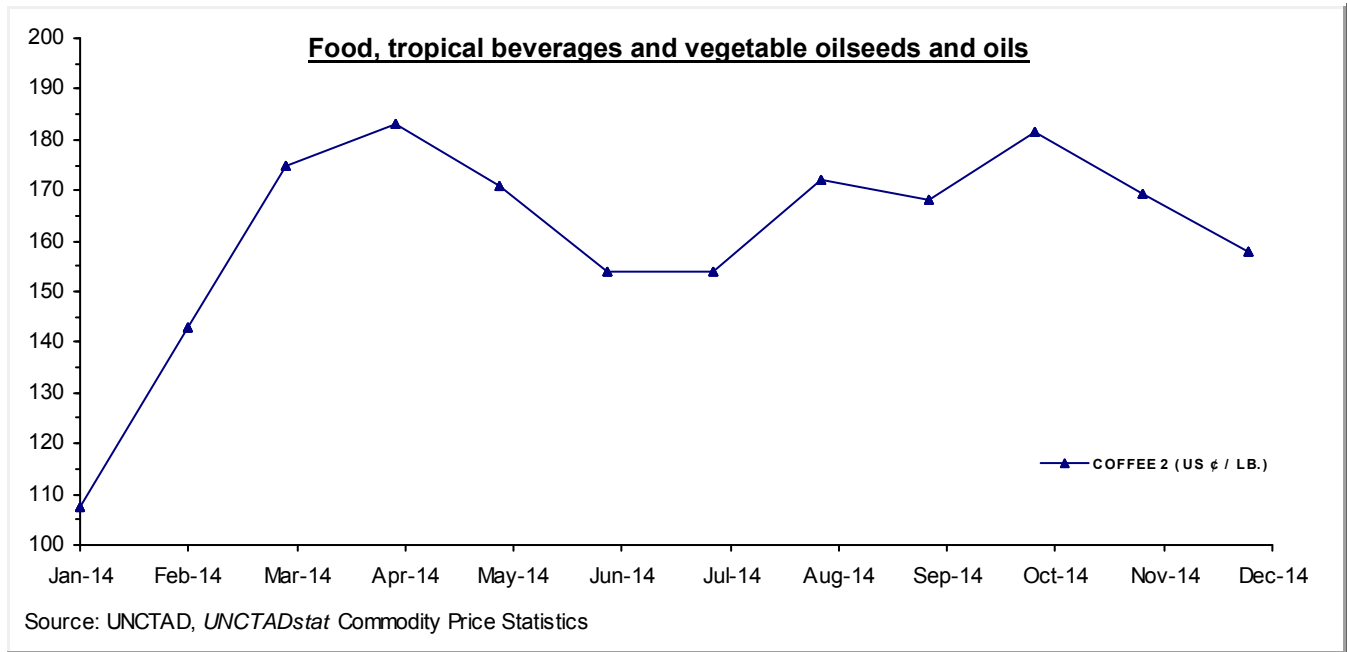
**MONTHLY AVERAGE PRICES**

**1 - FOOD, TROPICAL BEVERAGES AND VEGETABLE OILSEEDS AND OILS**

Moving averages		Jan 14	Feb 14	Mar 14	Apr 14	May 14	Jun 14	Jul 14	Aug 14	Sep 14	Oct 14	Nov 14	Dec 14
Jan 13 to Dec 13	Jan 14 to Dec 14												
<b>COFFEE 8</b>		ICO COMPOSITE INDICATOR PRICE											US CENTS / LB.
<b>119.5</b>	<b>155.3</b>	110.75	137.81	165.03	170.58	163.94	151.92	152.50	163.08	161.79	172.88	162.17	150.66
<b>COCOA 1</b>		AVERAGE OF DAILY PRICES, N.Y./LONDON, 3 MONTHS FUTURES											US CENTS / LB.
<b>110.6</b>	<b>139</b>	127.89	135.82	137.97	138.38	137.44	143.99	144.97	148.34	146.10	140.65	131.96	134.16
<b>COCOA 1 SDR</b>		AS ABOVE											SDRs / TONNE
<b>1604</b>	<b>2017</b>	1836.23	1944.39	1965.52	1970.49	1958.40	2059.73	2073.37	2142.71	2147.39	2086.22	1983.45	2030.76
<b>TEA 2</b>		KENYA, BEST PEKOE FANNINGS 1, MOMBASA AUCTION PRICE											US CENTS / KG.
<b>265.6</b>	<b>237.9</b>	249.0	257.0	237.7	223.4	219.5	223.7	232.4	235.8	233.0	256.2	243.3	243.3
<b>SOYBEANS</b>		US, NO. 2 YELLOW, CIF ROTTERDAM											US DOLLARS / TONNE
<b>545</b>	<b>492</b>	566	591	500	516	523	516	480	460	432	425	449	446
<b>SOYBEAN OIL</b>		DUTCH, FOB EX-MILL											US DOLLARS / TONNE
<b>1057</b>	<b>909</b>	943	985	1002	999	966	936	888	857	851	836	830	820
<b>SUNFLOWER OIL</b>		EU, FOB, N.W. EUROPEAN PORTS											US DOLLARS / TONNE
<b>1124</b>	<b>902</b>	920	945	964	941	943	928	887	828	823	874	892	877
<b>GROUNDNUT OIL</b>		ANY ORIGIN, CIF ROTTERDAM											US DOLLARS / TONNE
<b>1773</b>	<b>1313</b>	1410	1303	1221	1174	1200	1310	1325	1350	1360	1365	1368	1370
<b>COPRA</b>		PHILIPPINES/INDONESIA, CIF N.W. EUROPEAN PORTS											US DOLLARS / TONNE
<b>627</b>	<b>854</b>	848	915	926	905	930	934	861	770	785	769	795	813
<b>COCONUT OIL</b>		PHILIPPINES, CIF ROTTERDAM											US DOLLARS / TONNE
<b>941</b>	<b>1281</b>	1271	1365	1394	1356	1411	1402	1260	1172	1181	1150	1194	1217
<b>PALM KERNEL OIL</b>		MALAYSIA, CIF ROTTERDAM											US DOLLARS / TONNE
<b>897</b>	<b>1122</b>	1160	1292	1381	1299	1256	1234	1116	943	904	939	971	968
<b>PALM OIL</b>		INDONESIA, 5% FFA, CIF N.W. EUROPEAN PORTS											US DOLLARS / TONNE
<b>857</b>	<b>821</b>	865	908	961	911	894	857	841	762	709	724	731	693
<b>COTTONSEED OIL</b>		UNITED STATES, PBSY, FOB GULF											US DOLLARS / TONNE
<b>1045</b>	<b>1363</b>	1063e	1305e	1579e	1693e	1902e	1881e	1651e	1383e	1120e	936e	920e	920e

**MONTHLY AVERAGE PRICES**

**1 - FOOD, TROPICAL BEVERAGES AND VEGETABLE OILSEEDS AND OILS**



**MONTHLY AVERAGE PRICES**

**2 - AGRICULTURAL RAW MATERIALS**

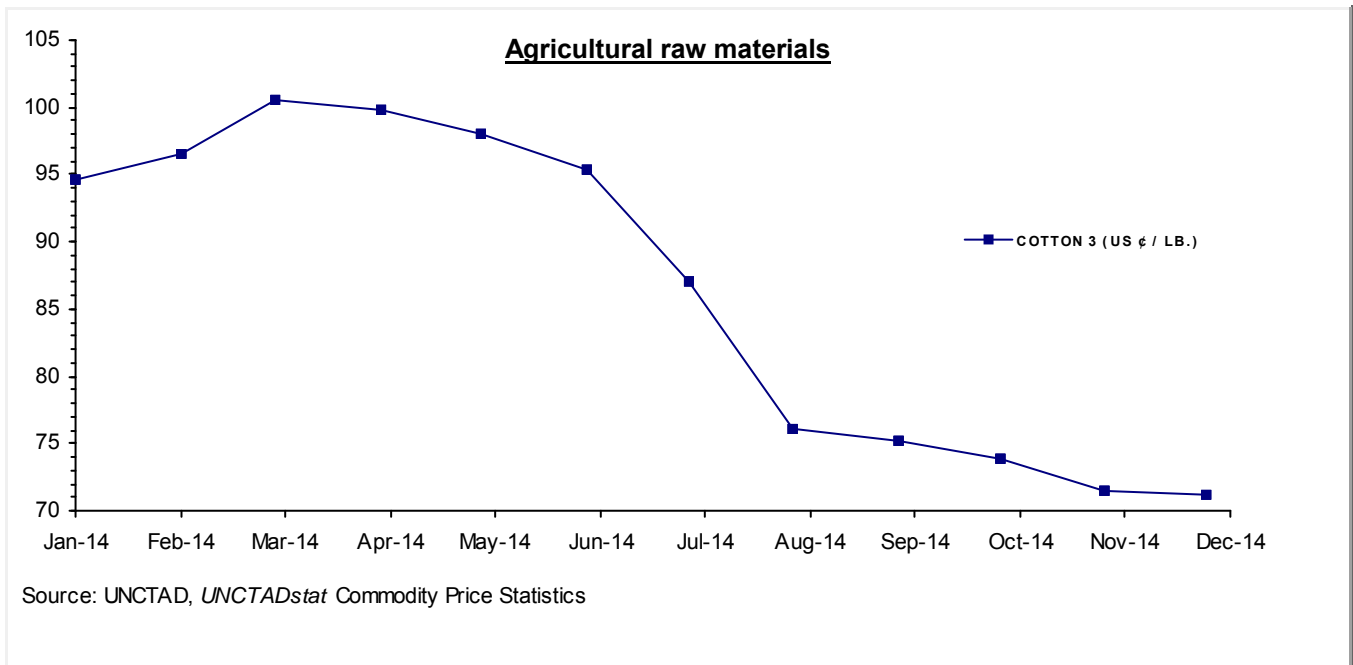
Moving averages		Jan 14	Feb 14	Mar 14	Apr 14	May 14	Jun 14	Jul 14	Aug 14	Sep 14	Oct 14	Nov 14	Dec 14
Jan 13 to Dec 13	Jan 14 to Dec 14												
<b>LINSEED OIL</b>		ANY ORIGIN, EX-TANK, ROTTERDAM										US DOLLARS / TONNE	
<b>1214</b>	<b>1213</b>	1128	1110	1220	1270	1233	1239	1243	1184	1114	1183	1315	1320
<b>TOBACCO</b>		UNMANUFACTURED, US IMPORT UNIT VALUE										US DOLLARS / TONNE	
<b>4573</b>	<b>4990</b>	4924	5052	5084	5089	5118	4996	4991	4920	4924	4943	4922r	4922e
<b>COTTON 2</b>		SUDAN, BARAKAT, X4B, C/F FAR EASTERN										US CENTS / LB.	
<b>107.1</b>		..	..	..	..	..	..	..	..	..	..	..	..
<b>COTTON 3</b>		US, MEMPHIS EASTERN, MIDD. 1-3/32", C/F FAR EASTERN										US CENTS / LB.	
<b>93.04</b>	<b>86.64</b>	94.60	96.50	100.56	99.88	98.00	95.31	87.05	76.06	75.19	73.85	71.44	71.25
<b>COTTON 4</b>		US, MEMPHIS/ORLEANS/TEXAS, MIDD.1", C/F FAR EASTERN										US CENTS / LB.	
<b>92.66</b>	<b>86.21</b>	94.35	96.25	100.31	99.44	97.50	94.81	86.55	75.81	74.94	73.40	70.69	70.50
<b>COTTON 6</b>		INDEX A (M 1-3/32"), COTTON OUTLOOK, LIVERPOOL										US CENTS / LB.	
<b>90.41</b>	<b>82.49</b>	90.96	94.05	96.95	94.20	92.71	90.90	76.59	74.00	73.38	70.34	67.53	68.30
<b>COTTON 8</b>		EGYPT, GIZA 88 GOOD+3/8, C/F FAR EASTERN										US CENTS / LB.	
<b>155.9</b>		..	..	..	..	..	..	..	..	..	..	..	..
<b>WOOL 2</b>		AUSTRALIAN FINE WOOL 19 MICRON										US DOLLARS / TONNE	
<b>11978</b>	<b>10754</b>	11472.4	11172.1	10775.7	10880.2	10968.5	10731.7	10781.5	10697.5	10565.0	10440.1	10419.7	10139.3
<b>WOOL 4</b>		AUSTRALIAN WOOL 23 MICRON										US DOLLARS / TONNE	
<b>11281</b>	<b>10306</b>	11167.7	10868.5	10472.4	10568.7	10653.8	10538.2	10551.2	10313.1	9876.8	9589.3	9684.3	9381.5
<b>JUTE</b>		BANGLADESH, BWD, FOB MONGLA										US DOLLARS / TONNE	
<b>599</b>	<b>635</b>	620	630	600	575	590	610	620	600	650	720	700r	710
<b>SISAL 1</b>		TANZANIA/KENYA, NO.2 & 3 LONG, CIF MAIN EUROPEAN PORTS										US DOLLARS / TONNE	
<b>1511</b>	<b>1762</b>	1575	1575	1557	1675	1834	1834	1850	1850	1850	1850	1850e	1850e
<b>SISAL 2</b>		TANZANIA/KENYA, NO.3 & UG, CIF MAIN EUROPEAN PORTS										US DOLLARS / TONNE	
<b>1396</b>	<b>1579</b>	1425	1425	1450	1450	1525	1525	1550	1650	1700	1750	1750e	1750e
<b>CATTLE HIDES 2</b>		CHICAGO, PACKER'S HEAVY NATIVE STEERS, FOB										US CENTS / LB.	
<b>95</b>	<b>110</b>	105	107	111	112	109	108	108	111	115	114	115	109
<b>NON-CONIFEROUS WOODS 1</b>		UK, IMPORT PRICE INDEX (DOLLAR EQUIVALENT)										INDEX 2005=100	
<b>133.5</b>		..	..	..	..	..	..	..	..	..	..	..	..
<b>NON-CONIFEROUS WOODS 2</b>		UK, IMPORT PRICE INDEX (DOLLAR EQUIVALENT)										INDEX 2010=100	
<b>99.4</b>	<b>102.8</b>	102.1	101.8	102.7	104.4	103.9	104.0	103.9	103.4	102.7	102.8	101.4	100.9
<b>TROPICAL LOGS 1</b>		SAPELE, LM, FOB UK IMPORT PRICE										US DOLLARS / CUBIC METER	
<b>463.5</b>	<b>465.2</b>	476.8	478.1	483.8	483.5	480.9	475.7	474.0	466.1	451.8	443.5	436.6	431.2
<b>TROPICAL LOGS 2</b>		GABON, OKOUME, LM, FOB										US DOLLARS / CUBIC METER	
<b>353.9</b>	<b>449.8</b>	449.4	457.8	466.7	469.5	466.8	462.3	460.2	452.7	438.5	431.0	424.1	418.6
<b>TROPICAL SAWNWOOD 1</b>		MALAYSIA, MERANTI TEMBAGA, SEL/BTR, CIF PLUS COMMISSION UK										£ / CUBIC METER	
<b>545.3</b>	<b>537.7</b>	545.0	545.0	545.0	545.0	545.0	545.0	545.0	545.0	545.0	545.0	545.0	457.5



## MONTHLY AVERAGE PRICES

### 2 - AGRICULTURAL RAW MATERIALS

Moving averages		Jan 14	Feb 14	Mar 14	Apr 14	May 14	Jun 14	Jul 14	Aug 14	Sep 14	Oct 14	Nov 14	Dec 14
Jan 13 to Dec 13	Jan 14 to Dec 14												
<b>PLYWOOD 1</b>		SOUTHEAST ASIA, LAUAN, WHOLESALE, SPOT TOKYO										US CENTS / SHEET	
<b>560.3</b>	<b>517.3</b>	525.68	535.29	533.62	532.53	536.50	535.08	536.87	530.41	509.09	505.60	469.80	457.45
<b>PLYWOOD 1 CM</b>		AS ABOVE										US DOLLARS / CUBIC METER	
<b>845.7</b>	<b>780.9</b>	793.50	808.01	805.49	803.84	809.84	807.69	810.39	800.64	768.46	763.19	709.15	690.51
<b>RUBBER 4</b>		NO.3 RSS, MONTHLY AVERAGE OF WEIGHTED DAILY FUTURE PRICE										US CENTS / KG	
<b>279.4</b>	<b>195.7</b>	232.6	214.5	228.1	219.5	207.3	208.7	201.9	185.0	164.4	162.0	163.7	160.3
<b>RUBBER 3</b>		TSR20 NEW YORK										US DOLLARS / TONNE	
<b>2747</b>	<b>1961</b>	2365.90	2144.30	2163.40	2008.60	1951.30	1964.70	1945.70	1904.10	1794.10	1765.60	1790.00	1734.00



**MONTHLY AVERAGE PRICES**

**3 - MINERALS, ORES AND METALS**

Moving averages		Jan 14	Feb 14	Mar 14	Apr 14	May 14	Jun 14	Jul 14	Aug 14	Sep 14	Oct 14	Nov 14	Dec 14
Jan 13 to Dec 13	Jan 14 to Dec 14												
<b>PHOSPHATE ROCK</b>		KHOURIBGA, 70% BPL, CONTRACT, FAS CASABLANCA										US DOLLARS / TONNE	
<b>148.1</b>	<b>110.3</b>	102.20	103.00	108.00	108.00	112.00	110.00	110.00	110.00	115.00	115.00	115.00	115.00
<b>MANGANESE ORE INDEX</b>		44% MN, CIF TIANJIN										US DOLLARS / TONNE	
<b>542</b>	<b>451</b>	511	511	485	459	424	423	427	431	437	440	435	433
<b>MANGANESE FLAKE</b>		99.7% ELECTROLYTIC, FREE MARKET, IN WAREHOUSE										US DOLLARS / TONNE	
<b>2319</b>	<b>2243</b>	2296	2275	2236	2143	2132	2180	2202	2333	2378	2327	2276	2137
<b>IRON ORE 3</b>		62% Fe, CHINA IMPORT, SPOT (CFR TIANJIN PORT)										US DOLLARS / DRY TONNE	
<b>135.4</b>	<b>96.96</b>	128.12	121.37	111.83	114.58	100.56	92.74	96.05	92.61	82.37	80.39	73.59	69.26
<b>IRON ORE 4</b>		62% Fe, OFFSHORE EXPORT PRICE AUSTRALIA TO CHINA, CIF										US DOLLARS / DRY TONNE	
<b>136.8</b>	<b>97.33</b>	130.00	122.00	112.00	115.00	101.00	93.00	96.00	93.00	83.00	81.00	74.00	68.00
<b>IRON ORE 5</b>		65% Fe, OFFSHORE EXPORT PRICE BRAZIL TO CHINA, CIF										US DOLLARS / DRY TONNE	
<b>144.8</b>	<b>106.1</b>	145.00	134.00	120.00	122.00	107.00	100.00	104.00	101.00	92.00	89.00	83.00	76.00
<b>ALUMINIUM</b>		LONDON METAL EXCHANGE, HIGH GRADE, CASH										US DOLLARS / TONNE	
<b>1846</b>	<b>1866</b>	1726.2	1693.6	1703.2	1809.4	1748.9	1834.2	1945.1	2029.9	1992.1	1937.0	2053.6	1912.9
<b>COPPER 1</b>		LONDON METAL EXCHANGE, GRADE A, CASH										STERLING POUNDS / TONNE	
<b>4686</b>	<b>4165</b>	4430.9	4321.5	4011.1	3985.8	4087.2	4026.3	4161.4	4190.1	4214.1	4193.7	4247.6	4105.7
<b>COPPER 1 \$</b>		AS ABOVE										US DOLLARS / TONNE	
<b>7326</b>	<b>6860</b>	7299.5	7153.8	6666.0	6673.4	6884.9	6806.5	7105.6	6998.7	6874.0	6738.9	6701.9	6419.7
<b>COPPER 2</b>		US PRODUCER/REFINERY, WIRE BARS, FOB										US CENTS / LB.	
<b>338.6</b>	<b>319.3</b>	339.5e	332.9e	310.4e	310.5e	320.4e	316.8e	330.7e	325.8e	319.9e	313.7e	311.9e	298.9e
<b>NICKEL 1</b>		LONDON METAL EXCHANGE, CASH										US DOLLARS / TONNE	
<b>15018</b>	<b>16865</b>	14076.4	14191.6	15656.8	17370.8	19434.4	18568.2	19046.7	18572.4	18075.8	15765.3	15702.4	15914.3
<b>NICKEL 2</b>		NEW YORK DEALER, 4X4 CATHODES, ESTIMATED MARKET PRICE										US CENTS / LB.	
<b>697.4</b>	<b>771.5</b>	643.9e	649.2e	716.2e	794.6e	889.0e	849.4e	871.3e	849.6e	826.9e	721.2e	718.3e	728.0e
<b>LEAD 1</b>		LONDON METAL EXCHANGE, CASH SETTLEMENT										STERLING POUNDS / TONNE	
<b>1370</b>	<b>1272</b>	1305.2	1275.2	1237.1	1246.3	1245.1	1244.2	1282.4	1338.7	1301.3	1268.2	1282.8	1237.5
<b>LEAD 1 \$</b>		AS ABOVE										US DOLLARS / TONNE	
<b>2142</b>	<b>2096</b>	2150.2	2110.9	2056.0	2086.6	2097.3	2103.4	2189.7	2236.1	2122.7	2037.9	2024.0	1935.0
<b>LEAD 2</b>		NORTH AMERICA, PRODUCER PRICE										US CENTS / LB.	
<b>115.8</b>	<b>116</b>	114.8	114.7	114.5	116.1	116.7	117.1	121.8	124.5	118.1	113.4	112.6	107.8
<b>ZINC 1</b>		L.M.E., SPECIAL HIGH GRADE, CASH SETTLEMENT										US DOLLARS / TONNE	
<b>1910</b>	<b>2162</b>	2038.1	2035.0	2014.1	2030.3	2060.0	2126.5	2310.7	2328.9	2293.7	2272.4	2259.1	2171.4
<b>ZINC 2</b>		NORTH AMERICA, SPECIAL HIGH GRADE										US CENTS / LB.	
<b>95.4</b>	<b>107.6</b>	101.7	101.6	100.6	101.4	102.7	105.5	113.8	114.7	113.1	112.0r	112.0e	112.0e

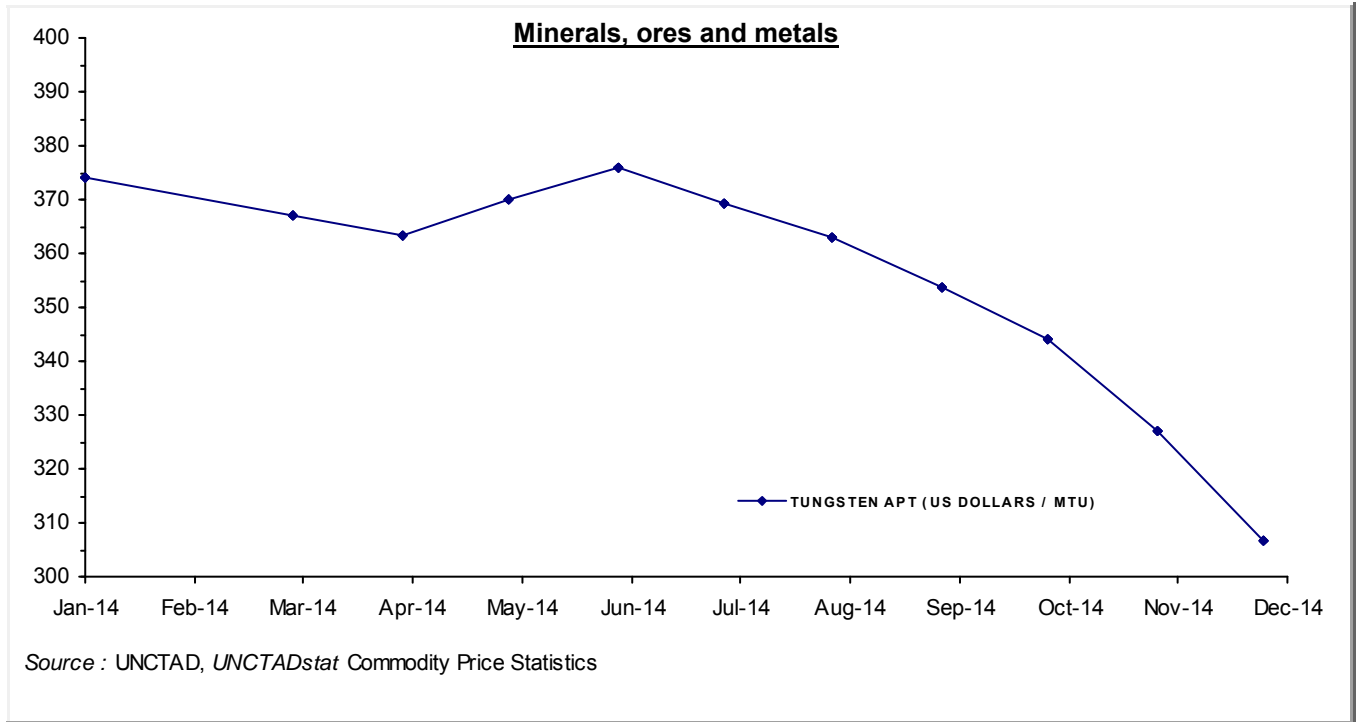
**MONTHLY AVERAGE PRICES**

**3 - MINERALS, ORES AND METALS**

Moving averages		Jan 14	Feb 14	Mar 14	Apr 14	May 14	Jun 14	Jul 14	Aug 14	Sep 14	Oct 14	Nov 14	Dec 14
Jan 13 to Dec 13	Jan 14 to Dec 14												
<b>TIN 1</b>		LONDON METAL EXCHANGE, CASH										US DOLLARS / TONNE	
<b>22309</b>	<b>21908</b>	22065	22803	23092	23413	23302	22768	22374	22283	21115	19903	19962	19820
<b>TIN 2</b>		KUALA LUMPUR MARKET, EX-SMELTER										MALAYSIAN DOLLARS / KG.	
<b>70.05</b>	<b>71.58</b>	72.77	74.90	75.59	75.78	75.14	73.52	71.53	71.01	68.19	65.10	66.69	68.71
<b>TIN 2 \$</b>		AS ABOVE										US DOLLARS / TONNE	
<b>22237</b>	<b>21884</b>	22014.8	22642.1	23023.3	23274.7	23261.0	22833.0	22466.9	22339.3	21186.9	19901.6	19919.4	19747.1
<b>TUNGSTEN APT</b>		EUROPEAN FREE MARKET										US DOLLARS / MTU	
<b>371.9</b>	<b>356.9</b>	373.94	368.00	367.00	363.50	369.89	376.00	369.44	362.78	353.75	344.25	326.88	306.83
<b>FERRO-TUNGSTEN</b>		BASIS 75% W, ROTTERDAM, DUTY UNPAID, IN WAREHOUSE										US DOLLARS / KG	
<b>45.35</b>	<b>41.93</b>	46.83	46.46	46.01	45.01	42.72	42.70	42.19	40.46	40.50	38.93	36.48	34.83
<b>GOLD</b>		LONDON, 99.5% FINE, AFTERNOON FIXING										US DOLLARS / TROY OUNCE	
<b>1411</b>	<b>1266</b>	1244.80	1300.98	1336.08	1299.00	1287.53	1279.10	1310.97	1295.99	1238.82	1222.49	1176.30	1202.29
<b>SILVER</b>		HANDY & HARMAN, 99.9% GRADE REFINED, NEW YORK										US CENTS / TROY OUNCE	
<b>2386</b>	<b>1907</b>	1987.52	2084.53	2071.60	1973.64	1934.19	1989.24	2092.25	1973.56	1836.88	1716.33	1596.61	1629.48
<b>CRUDE PETROLEUM 1</b>		DUBAI, UK BRENT AND WTI AVERAGE, SPOT, FOB										US DOLLARS / BARREL	
<b>104.1</b>	<b>96.25</b>	102.25	104.82	104.04	104.94	105.73	108.37	105.22	100.05	95.89	86.13	76.96	60.55
<b>CRUDE PETROLEUM 2</b>		UK BRENT, LIGHT BLEND 38 API, FOB UK										US DOLLARS / BARREL	
<b>108.9</b>	<b>98.94</b>	107.57	108.81	107.41	107.88	109.68	111.87	106.98	101.92	97.34	87.27	78.44	62.16
<b>CRUDE PETROLEUM 3</b>		DUBAI, MEDIUM, FATEH 32 API, FOB DUBAI										US DOLLARS / BARREL	
<b>105.4</b>	<b>96.66</b>	104.19	104.94	104.15	104.78	105.51	108.01	105.71	101.85	96.99	86.72	76.73	60.39



**MONTHLY AVERAGE PRICES**  
**3 - MINERALS, ORES AND METALS**



---

**SOURCES AND NOTES**

---

**Sources:**

Bloomberg Terminal Services  
*Cotton Outlook*, Liverpool, UK  
Food and Agricultural Organization (FAO), Italy  
International Cocoa Organization (ICCO), London, UK  
International Coffee Organization (ICO), London, UK  
International Grains Council (IGC), London, UK  
International Monetary Fund (IMF), Washington D.C., USA  
International Rubber Study Group (IRSG), London, UK  
International Sugar Organization, London, UK  
International Tropical Timber Organization (ITTO), Yokohama, Japan  
*Metal Bulletin*, London, UK  
*Oil World*, Hamburg, Germany  
*PLATTS*, New York, USA  
Singapore Commodity Exchange Ltd (SICOM), Singapore  
*The Public Ledger*, London, UK  
United States Department of Agriculture (USDA), Foreign Agriculture Service (FAS)  
World Bank, Washington D.C., USA

**Explanation of symbols:**

- " e " estimated figure
- " r " revised figure
- " .. " not available including no quotation
- " // " break in the series

The current and previous editions of the *Commodity Price Bulletin* are available in the Publications section of the Statistics portal of UNCTAD at <http://www.unctad.org>.

The long time series of annual and monthly commodity prices and prices indices, as well as instability indices are available in UNCTADstat at <http://unctadstat.unctad.org> as well as in the *Handbook of Statistics* DVD.

If you have any questions or comments concerning commodity price data, please do not hesitate to contact us:

E-mail: [statistics@unctad.org](mailto:statistics@unctad.org)