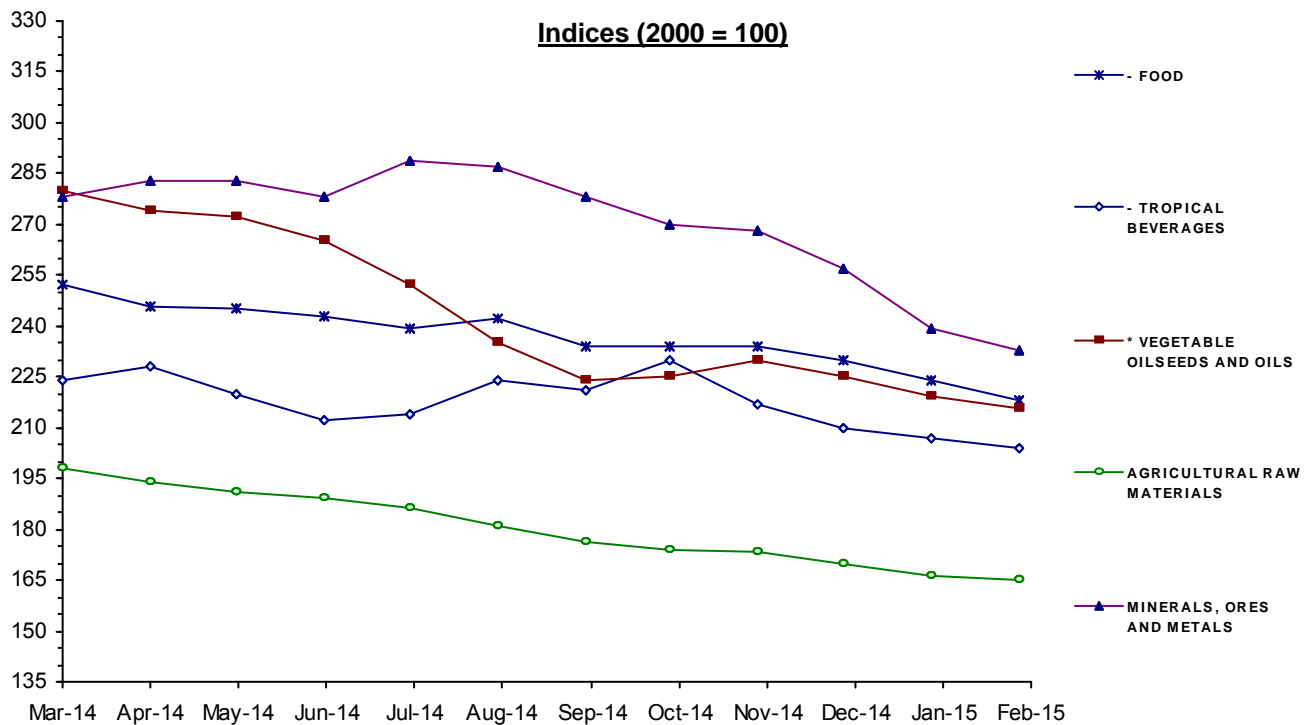


MONTHLY INDICES OF FREE MARKET PRICES IN US DOLLARS

2000 = 100

Moving averages		Mar 14	Apr 14	May 14	Jun 14	Jul 14	Aug 14	Sep 14	Oct 14	Nov 14	Dec 14	Jan 15	Feb 15
Mar 13 to Feb 14	Mar 14 to Feb 15												
ALL FOOD													
245	236	252	248	246	243	238	240	232	233	232	228	222	216
* TROPICAL BEVERAGES AND FOOD													
242	235	249	244	242	240	237	240	232	234	233	228	222	216
- TROPICAL BEVERAGES													
173	218	224	228	220	212	214	224	221	230	217	210	207	204
- FOOD													
250	237	252	246	245	243	239	242	234	234	234	230	224	218
* VEGETABLE OILSEEDS AND OILS													
268	243	280	274	272	265	252	235	224	225	230	225	219	216
AGRICULTURAL RAW MATERIALS													
202	180	198	194	191	189	186	181	176	174	173	170	166	165
MINERALS, ORES AND METALS													
298	270	278	283	283	278	289	287	278	270	268	257	239	233
PRICE INDEX - ALL GROUPS IN CURRENT DOLLARS													
253	238	252	250	248	245	245	244	236	235	234	228	219	214
PRICE INDEX - ALL GROUPS IN SDR'S													
220	209	215	213	212	210	210	212	208	209	211	207	203	200



Source: UNCTAD, UNCTADstat Commodity Price Statistics



MONTHLY AVERAGE PRICES

1 - FOOD, TROPICAL BEVERAGES AND VEGETABLE OILSEEDS AND OILS

Moving averages		Mar 14	Apr 14	May 14	Jun 14	Jul 14	Aug 14	Sep 14	Oct 14	Nov 14	Dec 14	Jan 15	Feb 15
Mar 13 to Feb 14	Mar 14 to Feb 15												
WHEAT 1		ARGENTINA, TRIGO PAN UP RIVER, FOB										US DOLLARS / TONNE	
320	287	344	361	371	364	264	268	237	239	255	251	253	241
WHEAT 2		US, NO. 2, HARD RED WINTER (ORDINARY), FOB GULF										US DOLLARS / TONNE	
315	296	337	334	340	316	294	285	274	286	282	289	261	250
MAIZE 1		ARGENTINA, ROSARIO (UP RIVER), FOB										US DOLLARS / TONNE	
231.1	194.2	225.0	228.0	223.0	204.0	192.0	180.3	165.0	169.0	182.0	199.0	185.0	178.0
MAIZE 2		US, NO. 3 YELLOW, FOB GULF										US DOLLARS / TONNE	
249.8	199.7	230.0	231.0	227.0	212.0	197.0	194.3	180.0	183.0	192.0	189.0	181.0	180.0
RICE		THAILAND, WHITE 5% BROKEN, FOB BANGKOK										US DOLLARS / TONNE	
497	421	434	410	404	415	428	440	437	433	419	411	410	410
SUGAR		AVERAGE OF I.S.A. DAILY PRICES, FOB & STOWED CARIBBEAN PORTS										US CENTS / LB.	
17.28	16.8	17.90	17.61	18.27	18.17	18.26	17.22	16.02	16.75	16.19	15.33	15.34	14.59
BEEF		AUSTRALIA/NEW ZEALAND, US IMPORT PRICE, FOB ENTRY PORT										US CENTS / LB.	
182.6	229.4	197.8	191.2	194.6	200.8	227.5	258.9	272.3	266.9	261.5	239.6	232.0	209.9
BANANAS		CENTRAL AMERICA/ECUADOR, US IMPORTER'S PRICE, FOB US PORTS										US CENTS / LB.	
42.08	42.28	43.86	42.89	41.55	42.01	42.22	43.62	41.98	41.84	41.04	41.19	41.35	43.86
PEPPER		INDONESIA, MUNTOK, WHITE FAQ EXW ROTTERDAM										US DOLLARS / TONNE	
10093	13108	11757	12253	12220	12000	12404	13555	13673	13613	13700	13967	14400	13748
SOYBEAN MEAL		44/45% PROTEIN, FOB EX-MILL HAMBURG										US DOLLARS / TONNE	
545	486	582	563	547	531	477	485	456	440	460	453	431	412
FISH MEAL		ANY ORIGIN, 64/65% PROTEIN, FREE CARRIER PRICE, BREMEN										US DOLLARS / TONNE	
1688	1753	1653	1658	1651	1765	1806	1773	1723	1770	1836	1890	1790	1717
COFFEE 1		COLOMBIAN MILD ARABICAS, EX-DOCK USA (I.C.A.)										US CENTS / LB.	
145.9	202	213.63	223.79	213.45	196.14	194.91	210.42	202.77	219.27	203.71	191.53	182.32	171.68
COFFEE 2		BRAZILIAN AND OTHER NATURAL ARABICAS, EX-DOCK USA (I.C.A.)										US CENTS / LB.	
116.1	165	174.89	182.89	170.89	154.02	154.00	171.99	168.11	181.58	169.10	157.87	151.21	143.32
COFFEE 3		OTHER MILD ARABICAS, EX-DOCK USA (I.C.A.)										US CENTS / LB.	
141.1	207.8	216.06	226.99	215.24	198.91	198.59	214.50	212.01	227.06	212.93	200.59	190.90	179.94
COFFEE 4		OTHER MILD ARABICAS, EX-DOCK EU (I.C.A.)										US CENTS / LB.	
138.4	204.4	212.88	221.33	213.07	197.60	195.87	212.02	209.22	224.20	207.27	191.70	189.75	177.98
COFFEE 5		ROBUSTAS, EX-DOCK USA (I.C.A.)										US CENTS / LB.	
98.71	106.6	111.90	110.68	108.35	104.63	107.23	105.07	105.57	109.39	106.81	103.51	102.33	103.74
COFFEE 6		ROBUSTAS, EX-DOCK EU (I.C.A.)										US CENTS / LB.	
91.3	100.5	104.12	104.57	101.77	98.00	100.74	99.34	99.53	103.80	102.33	97.76	97.21	97.28
COFFEE 7		COMPOSITE INDICATOR PRICE 1976 VERSION										US CENTS / LB.	
119.9	157.2	163.98	168.84	161.80	151.77	152.91	159.79	158.79	168.23	159.87	152.05	146.62	141.84

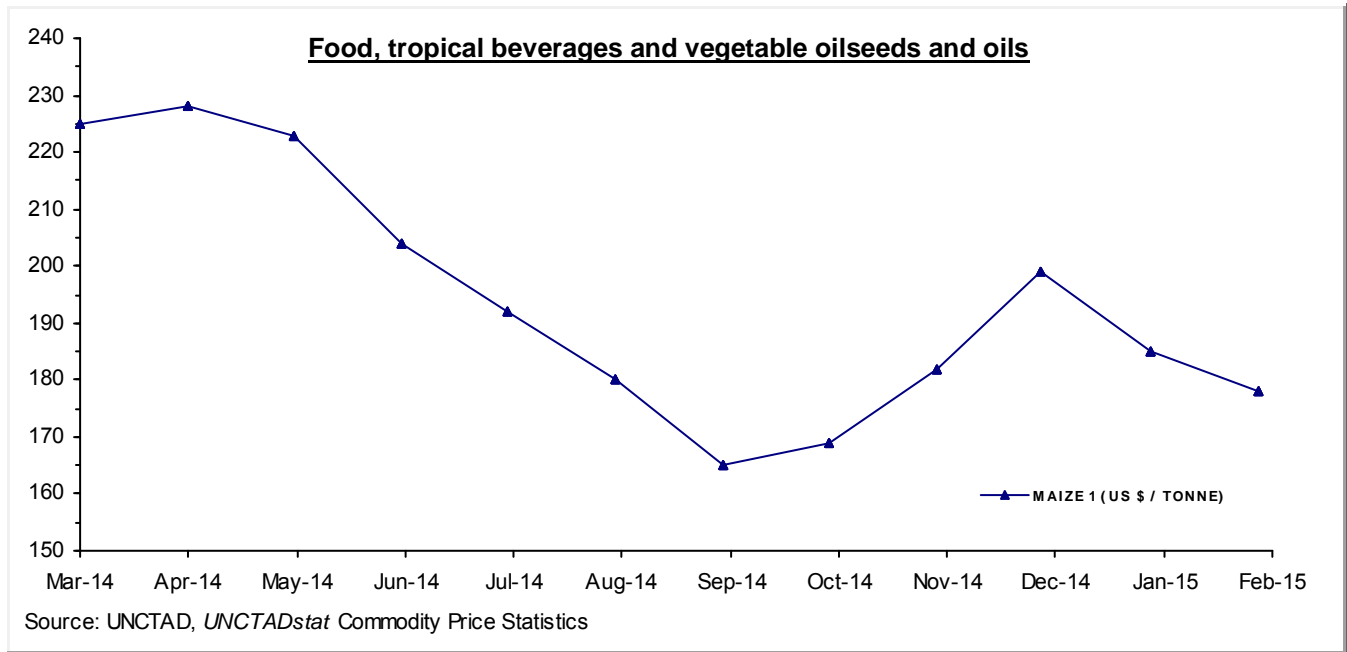
MONTHLY AVERAGE PRICES

1 - FOOD, TROPICAL BEVERAGES AND VEGETABLE OILSEEDS AND OILS

Moving averages		Mar 14	Apr 14	May 14	Jun 14	Jul 14	Aug 14	Sep 14	Oct 14	Nov 14	Dec 14	Jan 15	Feb 15
Mar 13 to Feb 14	Mar 14 to Feb 15												
COFFEE 8		ICO COMPOSITE INDICATOR PRICE											US CENTS / LB.
118	158.7	165.03	170.58	163.94	151.92	152.50	163.08	161.79	172.88	162.17	150.66	148.24	141.10
COCOA		AVERAGE OF DAILY PRICES, NEW YORK/LONDON, 3 MONTHS FUTURES											US CENTS / LB.
112.7	139.2	137.97	138.38	137.44	143.99	144.97	148.34	146.10	140.65	131.96	134.16	132.50	133.67
COCOA SDR		AS ABOVE											SDRs / TONNE
1634	2047	1965.52	1970.49	1958.40	2059.73	2073.37	2142.71	2147.39	2086.22	1983.45	2030.76	2053.67	2086.24
TEA		KENYA, BEST PEKOE FANNINGS 1, MOMBASA AUCTION PRICE											US CENTS / KG.
252.8	242.9	237.7	223.4	219.5	223.7	232.4	235.8	233.0	256.2	243.3	243.3	269.6	296.4
SOYBEANS		US, NO. 2 YELLOW, CIF ROTTERDAM											US DOLLARS / TONNE
542	465	500	516	523	516	480	460	432	425	449	446	423	407
SOYBEAN OIL		DUTCH, FOB EX-MILL											US DOLLARS / TONNE
1020	880	1002	999	966	936	888	857	851	836	830	820	799	772
SUNFLOWER OIL		EU, FOB, N.W. EUROPEAN PORTS											US DOLLARS / TONNE
1067	883	964	941	943	928	887	828	823	874	892	877	837	803
GROUNDNUT OIL		ANY ORIGIN, CIF ROTTERDAM											US DOLLARS / TONNE
1659	1317	1221	1174	1200	1310	1325	1350	1360	1365	1368	1370	1391	1366
COPRA		PHILIPPINES/INDONESIA, CIF N.W. EUROPEAN PORTS											US DOLLARS / TONNE
680	837	926	905	930	934	861	770	785	769	795	813	764	794
COCONUT OIL		PHILIPPINES/INDONESIA, CIF ROTTERDAM											US DOLLARS / TONNE
1019	1257	1394	1356	1411	1402	1260	1172	1181	1150	1194	1217	1155	1188
PALM KERNEL OIL		MALAYSIA/INDONESIA, CIF ROTTERDAM											US DOLLARS / TONNE
965	1092	1381	1299	1256	1234	1116	943	904	939	971	968	1019	1077
PALM OIL		INDONESIA/MALAYSIA, 5% FFA, CIF N.W. EUROPEAN PORTS											US DOLLARS / TONNE
863	788	961	911	894	857	841	762	709	724	731	693	685	688
COTTONSEED OIL		UNITED STATES, CRUDE, FOB MISSISSIPPI VALLEY											US DOLLARS / TONNE
1050	1343	1656	1874	1888	1780	1576	1222	1180	1032	904	926	1023	1058

MONTHLY AVERAGE PRICES

1 - FOOD, TROPICAL BEVERAGES AND VEGETABLE OILSEEDS AND OILS



MONTHLY AVERAGE PRICES

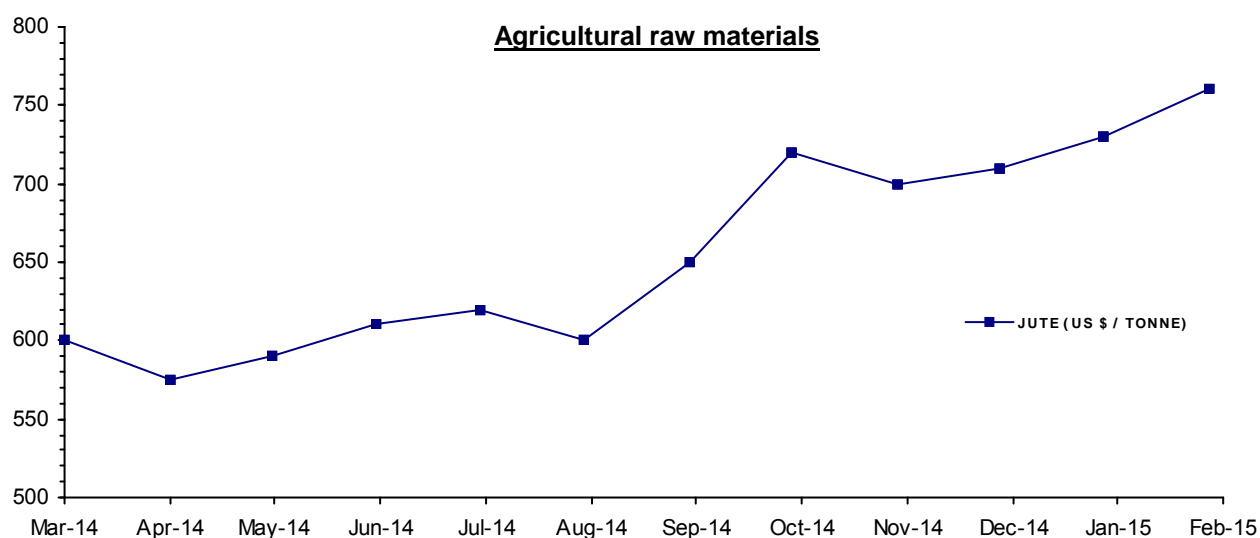
2 - AGRICULTURAL RAW MATERIALS

Moving averages		Mar 14	Apr 14	May 14	Jun 14	Jul 14	Aug 14	Sep 14	Oct 14	Nov 14	Dec 14	Jan 15	Feb 15
Mar 13 to Feb 14	Mar 14 to Feb 15												
LINSEED OIL		ANY ORIGIN, EX-TANK, ROTTERDAM										US DOLLARS / TONNE	
1201	1223	1220	1270	1233	1239	1243	1184	1114	1183	1315	1320	1198	1158
TOBACCO		UNMANUFACTURED, US IMPORT UNIT VALUE										US DOLLARS / TONNE	
4671	4980	5084	5089	5118	4996	4991	4920	4924	4943	4922	4926	4923r	4923e
COTTON 2		SUDAN, BARAKAT, X4B, CFR FAR EASTERN										US CENTS / LB.	
107.1	
COTTON 3		US, MEMPHIS EASTERN, MIDD. 1-3/32", CFR FAR EASTERN										US CENTS / LB.	
94.02	82.65	100.56	99.88	98.00	95.31	87.05	76.06	75.19	73.85	71.44	71.25	69.63	73.63
COTTON 4		US, MEMPHIS/ORLEANS/TEXAS, MIDD.1", CFR FAR EASTERN										US CENTS / LB.	
93.67	82.17	100.31	99.44	97.50	94.81	86.55	75.81	74.94	73.40	70.69	70.50	68.94	73.13
COTTON 6		INDEX A (M 1-3/32"), COTTON OUTLOOK, LIVERPOOL										US CENTS / LB.	
91.23	78.51	96.95	94.20	92.71	90.90	76.59	74.00	73.38	70.34	67.53	68.30	67.35	69.84
COTTON 8		EGYPT, GIZA 88 GOOD+3/8, CFR FAR EASTERN										US CENTS / LB.	
158.3	
WOOL 1		AUSTRALIAN FINE WOOL 19 MICRON										US DOLLARS / TONNE	
11562	10452	10775.7	10880.2	10968.5	10731.7	10781.5	10697.5	10565.0	10440.1	10419.7	10021.3	9670.3	9469.1
WOOL 2		AUSTRALIAN COARSE WOOL 23 MICRON										US DOLLARS / TONNE	
11056	9960	10472.4	10568.7	10653.8	10538.2	10551.2	10313.1	9876.8	9589.3	9684.3	9356.2	8993.9	8924.4
JUTE		BANGLADESH, BWD, FOB MONGLA										US DOLLARS / TONNE	
608	655	600	575	590	610	620	600	650	720	700	710	730r	760
SISAL 1		TANZANIA/KENYA, NO.2 & 3 LONG, CIF MAIN EUROPEAN PORTS										US DOLLARS / TONNE	
1513	1768	1550r	1550r	1625r	1650r	1745r	1770r	1800r	1850	1880r	1905r	1935r	1950
SISAL 2		TANZANIA/KENYA, NO.3 & UG, CIF MAIN EUROPEAN PORTS										US DOLLARS / TONNE	
1400	1668	1450	1450	1525	1550r	1645r	1670r	1700	1750	1780r	1805r	1835r	1850
CATTLE HIDES		CHICAGO, PACKER'S HEAVY NATIVE STEERS, FOB										US CENTS / LB.	
98	111	111	112	109	108	108	111	115	114	115	109	109	109
NON-CONIFEROUS WOODS		UK, IMPORT PRICE INDEX (DOLLAR EQUIVALENT)										INDEX 2010=100	
100.7	102.1	102.7	104.4	103.9	104.0	103.9	103.4	102.7	102.8	101.4	100.9	98.1	96.6
TROPICAL LOGS 1		SAPELE, LM, FOB UK IMPORT PRICE										US DOLLARS / CUBIC METER	
465.4	452.7	483.8	483.5	480.9	475.7	474.0	466.1	451.8	443.5	436.6	431.2	407.6	397.5
TROPICAL LOGS 2		OKOUME (60% CI, 40% CE, 20% CS), FOB										US DOLLARS / CUBIC METER	
375.1	436.2	466.7	469.5	466.8	462.3	460.2	452.7	438.5	431.0	424.1	418.6	380.8	363.2
TROPICAL SAWNWOOD		MALAYSIA, DARK RED MERANTI, SEL/BTR, CFR PLUS COMMISSION UK										£ / CUBIC METER	
545.3	537.7	545.0	545.0	545.0	545.0	545.0	545.0	545.0	545.0	545.0	545.0r	545.0	545.0
PLYWOOD		AFRICA/SOUTHEAST ASIA, LAUAN, WHOLESALE PRICE, SPOT TOKYO										US CENTS / SHEET	
548.7	505.7	533.62	532.53	536.50	535.08	536.87	530.41	509.09	505.60	469.80	457.45	461.30	460.18

MONTHLY AVERAGE PRICES

2 - AGRICULTURAL RAW MATERIALS

Moving averages		Mar 14	Apr 14	May 14	Jun 14	Jul 14	Aug 14	Sep 14	Oct 14	Nov 14	Dec 14	Jan 15	Feb 15
Mar 13 to Feb 14	Mar 14 to Feb 15												
PLYWOOD CM		AS ABOVE										US DOLLARS / CUBIC METER	
828.3	763.4	805.49	803.84	809.84	807.69	810.39	800.64	768.46	763.19	709.15	690.51	696.32	694.63
RUBBER 1		RSS 3, MONTHLY AVERAGE OF WEIGHTED DAILY FUTURE PRICES										US CENTS / KG	
262.6	187.3	228.1	219.5	207.3	208.7	201.9	185.0	164.4	162.0	163.7	160.3	165.4	180.8
RUBBER 2		TSR20 NEW YORK CIF										US DOLLARS / TONNE	
2578	1867	2163.40	2008.60	1951.30	1964.70	1945.70	1904.10	1794.10	1765.60	1790.00	1734.00	1697.30	1686.80



Source: UNCTAD, *UNCTADstat* Commodity Price Statistics

MONTHLY AVERAGE PRICES

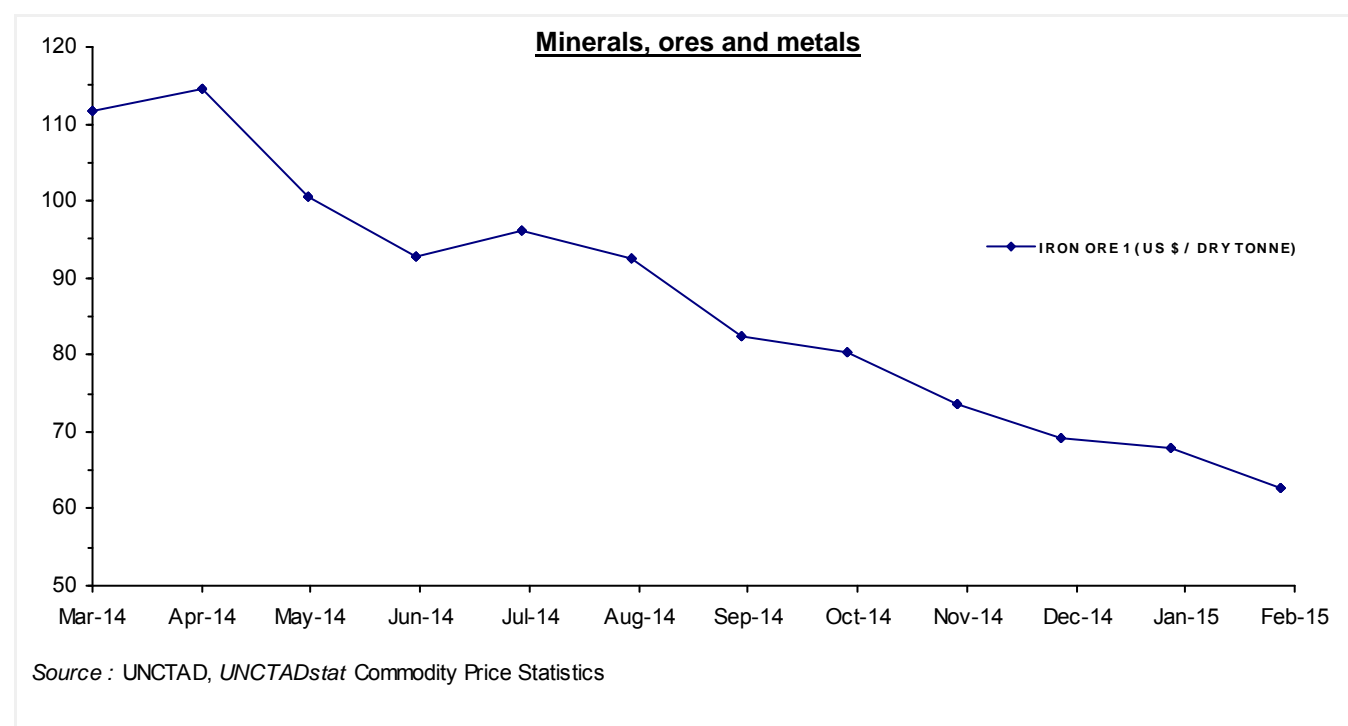
3 - MINERALS, ORES AND METALS

Moving averages		Mar 14	Apr 14	May 14	Jun 14	Jul 14	Aug 14	Sep 14	Oct 14	Nov 14	Dec 14	Jan 15	Feb 15
Mar 13 to Feb 14	Mar 14 to Feb 15												
PHOSPHATE ROCK		K HOURIBGA, 70% BPL, CONTRACT, FAS CASABLANCA										US DOLLARS / TONNE	
136.1	112.3	108.00	108.00	112.00	110.00	110.00	110.00	115.00	115.00	115.00	115.00	115.00	115.00
MANGANESE ORE INDEX		44% MN, CIF TIANJIN										US DOLLARS / TONNE	
536	432	485	459	424	423	427	431	437	440	435	433	417	376
MANGANESE FLAKE		99.7% ELECTROLYTIC, FREE MARKET, IN WAREHOUSE										US DOLLARS / TONNE	
2283	2210	2236	2143	2132	2180	2202	2333	2378	2327	2276	2137	2113	2068
IRON ORE 1		62% Fe, CHINA IMPORT, SPOT (CFR TIANJIN PORT)										US DOLLARS / DRY TONNE	
130.7	87.05	111.83	114.58	100.56	92.74	96.05	92.61	82.37	80.39	73.59	69.26	67.84	62.81
IRON ORE 2		62% Fe, OFFSHORE EXPORT PRICE AUSTRALIA TO CHINA, CIF										US DOLLARS / DRY TONNE	
132.2	87.25	112.00	115.00	101.00	93.00	96.00	93.00	83.00	81.00	74.00	68.00	68.00	63.00
IRON ORE 3		65% Fe, OFFSHORE EXPORT PRICE BRAZIL TO CHINA, CIF										US DOLLARS / DRY TONNE	
141.4	95.08	120.00	122.00	107.00	100.00	104.00	101.00	92.00	89.00	83.00	76.00	77.00	70.00
ALUMINIUM		LONDON METAL EXCHANGE, HIGH GRADE, CASH										US DOLLARS / TONNE	
1790	1883	1703.2	1809.4	1748.9	1834.2	1945.1	2029.9	1992.1	1937.0	2053.6	1912.9	1808.1	1820.4
COPPER 1		LONDON METAL EXCHANGE, GRADE A, CASH										STERLING POUNDS / TONNE	
4561	4065	4011.1	3985.8	4087.2	4026.3	4161.4	4190.1	4214.1	4193.7	4247.6	4105.7	3838.2	3719.9
COPPER 1 \$		AS ABOVE										US DOLLARS / TONNE	
7187	6616	6666.0	6673.4	6884.9	6806.5	7105.6	6998.7	6874.0	6738.9	6701.9	6419.7	5822.2	5700.7
COPPER 2		US PRODUCER/REFINERY, WIRE BARS, FOB										US CENTS / LB.	
333.2	313.5	313.9	312.9	319.9	316.3	328.9	321.3	314.7	309.1	309.1e	309.1e	303.6e	303.6e
NICKEL 1		LONDON METAL EXCHANGE, CASH										US DOLLARS / TONNE	
14442	16950	15656.8	17370.8	19434.4	18568.2	19046.7	18572.4	18075.8	15765.3	15702.4	15914.3	14766.9	14531.1
NICKEL 2		NEW YORK DEALER, 4X4 CATHODES, ESTIMATED MARKET PRICE										US CENTS / LB.	
670.7	775.4	716.2e	794.6e	889.0e	849.4e	871.3e	849.6e	826.9e	721.2e	718.3e	728.0e	675.5e	664.7e
LEAD 1		LONDON METAL EXCHANGE, CASH SETTLEMENT										STERLING POUNDS / TONNE	
1335	1256	1237.1	1246.3	1245.1	1244.2	1282.4	1338.7	1301.3	1268.2	1282.8	1237.5	1207.3	1177.6
LEAD 1 \$		AS ABOVE										US DOLLARS / TONNE	
2104	2044	2056.0	2086.6	2097.3	2103.4	2189.7	2236.1	2122.7	2037.9	2024.0	1935.0	1831.4	1804.7
LEAD 2		NORTH AMERICA, PRODUCER PRICE										US CENTS / LB.	
115.6	113.7	114.5	116.1	116.7	117.1	121.8	124.5	118.1	113.4	112.6	107.8	101.8e	100.4e
ZINC 1		LONDON METAL EXCHANGE, SPECIAL HIGH GRADE, CASH SETTLEMENT										US DOLLARS / TONNE	
1903	2173	2014.1	2030.3	2060.0	2126.5	2310.7	2328.9	2293.7	2272.4	2259.1	2171.4	2110.3	2102.7
ZINC 2		NORTH AMERICA, SPECIAL HIGH GRADE										US CENTS / LB.	
95.3	109.1	100.6	101.4	102.7	105.5	113.8	114.7	113.1	112.0	111.2r	111.2e	111.2e	111.2e
TIN 1		LONDON METAL EXCHANGE, CASH										US DOLLARS / TONNE	
21967	21314	23092	23413	23302	22768	22374	22283	21115	19903	19962	19820	19453	18284

MONTHLY AVERAGE PRICES

3 - MINERALS, ORES AND METALS

Moving averages		Mar 14	Apr 14	May 14	Jun 14	Jul 14	Aug 14	Sep 14	Oct 14	Nov 14	Dec 14	Jan 15	Feb 15
Mar 13 to Feb 14	Mar 14 to Feb 15												
TIN 2		KUALA LUMPUR TIN MARKET, EX-SMELTER										MALAYSIAN DOLLARS / KG.	
69.85	70.55	75.59	75.78	75.14	73.52	71.53	71.01	68.19	65.10	66.69	68.71	69.64	65.75
TIN 2 \$		AS ABOVE										US DOLLARS / TONNE	
21886	21306	23023.3	23274.7	23261.0	22833.0	22466.9	22339.3	21186.9	19901.6	19919.4	19747.1	19444.4	18276.1
TUNGSTEN APT		EUROPEAN FREE MARKET										US DOLLARS / MTU	
381.3	342.8	367.00	363.50	369.89	376.00	369.44	362.78	353.75	344.25	326.88	306.83	291.94	281.00
FERRO-TUNGSTEN		BASIS 75% W, ROTTERDAM, DUTY UNPAID, IN WAREHOUSE										US DOLLARS / KG	
46.09	39.75	46.01	45.01	42.72	42.70	42.19	40.46	40.50	38.93	36.48	34.83	34.25	32.93
GOLD		LONDON, 99.5% FINE, AFTERNOON FIXING										US DOLLARS / TROY OUNCE	
1348	1261	1336.08	1299.00	1287.53	1279.10	1310.97	1295.99	1238.82	1222.49	1176.30	1202.29	1251.85	1227.19
SILVER		HANDY & HARMAN, 99.9% GRADE REFINED, NEW YORK										US CENTS / TROY OUNCE	
2214	1851	2071.60	1973.64	1934.19	1989.24	2092.25	1973.56	1836.88	1716.33	1596.61	1629.48	1723.55	1678.71
CRUDE PETROLEUM 1		UK BRENT, DUBAI & WTI AVERAGE, EQUALLY WEIGHTED, SPOT, FOB										US DOLLARS / BARREL	
103.6	87.52	104.04	104.94	105.73	108.37	105.22	100.05	95.89	86.13	76.96	60.55	47.45	54.93
CRUDE PETROLEUM 2		UK BRENT, LIGHT BLEND 38° API, SPOT PRICE, FOB UK PORTS										US DOLLARS / BARREL	
107.8	89.78	107.41	107.88	109.68	111.87	106.98	101.92	97.34	87.27	78.44	62.16	48.42	57.93
CRUDE PETROLEUM 3		DUBAI, MEDIUM, FATEH 32° API, SPOT PRICE, FOB DUBAI										US DOLLARS / BARREL	
104.6	87.78	104.15	104.78	105.51	108.01	105.71	101.85	96.99	86.72	76.73	60.39	46.34	56.15



SOURCES AND NOTES

Sources:

Bloomberg Terminal Services
Cotton Outlook, Liverpool, UK
Food and Agricultural Organization (FAO), Italy
International Cocoa Organization (ICCO), London, UK
International Coffee Organization (ICO), London, UK
International Grains Council (IGC), London, UK
International Monetary Fund (IMF), Washington D.C., USA
International Rubber Study Group (IRSG), Singapore
International Sugar Organization, London, UK
International Tropical Timber Organization (ITTO), Yokohama, Japan
Metal Bulletin, London, UK
Oil World, Hamburg, Germany
PLATTS, New York, USA
Singapore Commodity Exchange Ltd (SICOM), Singapore
The Public Ledger, London, UK
United States Department of Agriculture (USDA), Foreign Agriculture Service (FAS)
World Bank, Washington D.C., USA

Explanation of symbols:

- " e " estimated figure
- " r " revised figure
- " .. " not available including no quotation
- " // " break in the series

The current and previous editions of the *Commodity Price Bulletin* are available in the Publications section of the Statistics portal of UNCTAD at <http://www.unctad.org>.

The long time series of annual and monthly commodity prices and prices indices, as well as instability indices are available in UNCTADstat at <http://unctadstat.unctad.org> as well as in the *Handbook of Statistics* DVD. If you have any questions or comments concerning commodity price data, please do not hesitate to contact us:
E-mail: statistics@unctad.org