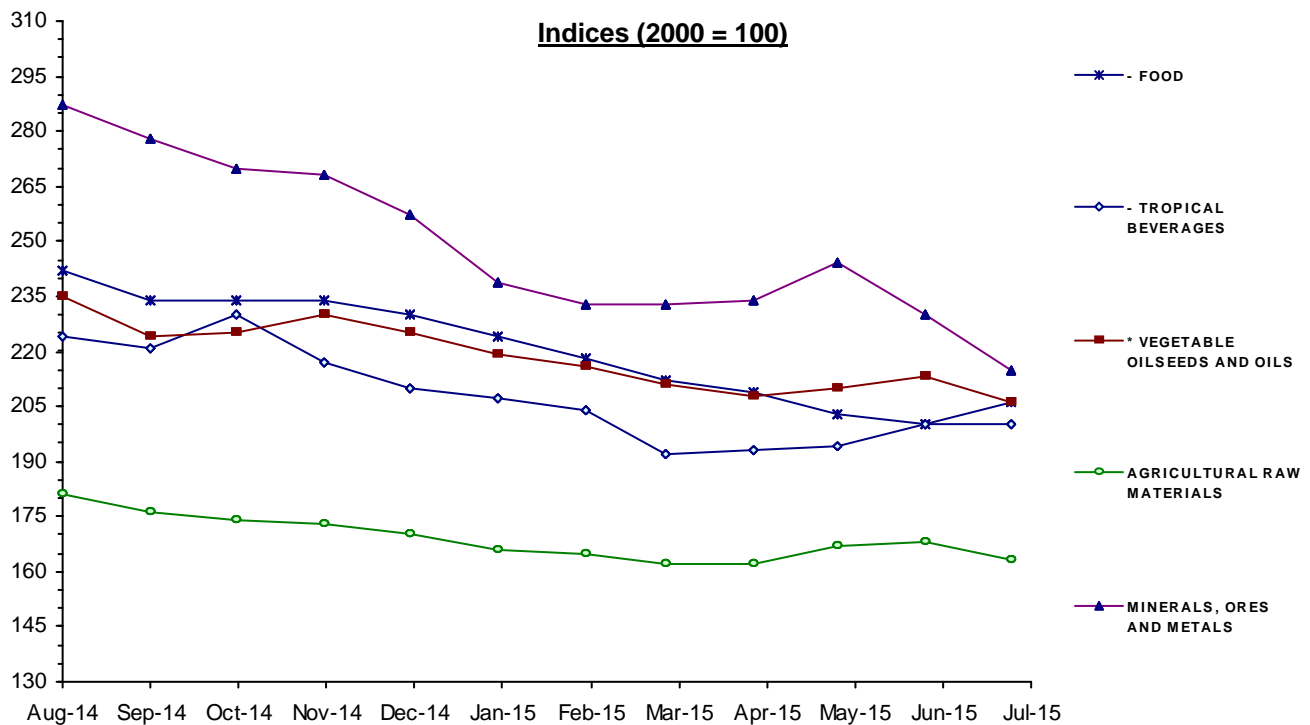


MONTHLY INDICES OF FREE MARKET PRICES IN US DOLLARS

2000 = 100

Moving averages		Aug 14	Sep 14	Oct 14	Nov 14	Dec 14	Jan 15	Feb 15	Mar 15	Apr 15	May 15	Jun 15	Jul 15
Aug 13 to Jul 14	Aug 14 to Jul 15												
ALL FOOD													
242	219	240	232	233	232	228	222	216	210	208	203	201	205
* TROPICAL BEVERAGES AND FOOD													
238	219	240	232	234	233	228	222	216	210	207	202	200	205
- TROPICAL BEVERAGES													
191	208	224	221	230	217	210	207	204	192	193	194	200	200
- FOOD													
244	220	242	234	234	234	230	224	218	212	209	203	200	206
* VEGETABLE OILSEEDS AND OILS													
270	218	235	224	225	230	225	219	216	211	208	210	213	206
AGRICULTURAL RAW MATERIALS													
198	169	181	176	174	173	170	166	165	162	162	167	168	163
MINERALS, ORES AND METALS													
291	249	287	278	270	268	257	239	233	233	234	244	230	215
PRICE INDEX - ALL GROUPS IN CURRENT DOLLARS													
249	220	244	236	235	234	228	219	214	210	208	209	204	202
PRICE INDEX - ALL GROUPS IN SDR'S													
214	202	212	208	209	211	207	203	200	200	199	197	192	191



Source: UNCTAD, UNCTADstat Commodity Price Statistics



MONTHLY AVERAGE PRICES

1 - FOOD, TROPICAL BEVERAGES AND VEGETABLE OILSEEDS AND OILS

Moving averages		Aug 14	Sep 14	Oct 14	Nov 14	Dec 14	Jan 15	Feb 15	Mar 15	Apr 15	May 15	Jun 15	Jul 15
Aug 13 to Jul 14	Aug 14 to Jul 15												
WHEAT 1		ARGENTINA, TRIGO PAN UP RIVER, FOB										US DOLLARS / TONNE	
332	240	268	237	239	255	251	253	241	229	227	227	226	230
WHEAT 2		US, NO. 2, HARD RED WINTER (ORDINARY), FOB GULF										US DOLLARS / TONNE	
316	261	285	274	286	282	289	261	250	249	244	233	238	236
MAIZE 1		ARGENTINA, ROSARIO (UP RIVER), FOB										US DOLLARS / TONNE	
214.2	175.9	180.3	165.0	169.0	182.0	199.0	185.0	178.0	169.0	168.0	169.0	170.0	176.0
MAIZE 2		US, NO. 3 YELLOW, FOB GULF										US DOLLARS / TONNE	
218.3	181.9	194.3	180.0	183.0	192.0	189.0	181.0	180.0	177.0	177.0	171.0	173.0	185.0
RICE		THAILAND, WHITE 5% BROKEN, FOB BANGKOK										US DOLLARS / TONNE	
442	408	440	437	433	419	411	410	410	401	392	382	371	388
SUGAR		AVERAGE OF I.S.A. DAILY PRICES, FOB & STOWED CARIBBEAN PORTS										US CENTS / LB.	
17.48	14.69	17.22	16.02	16.75	16.19	15.33	15.34	14.59	13.16	13.08	13.34	12.46	12.77
BEEF		AUSTRALIA/NEW ZEALAND, US IMPORT PRICE, FOB ENTRY PORT										US CENTS / LB.	
190.8	230.2	258.9	272.3	266.9	261.5	239.6	232.0	209.9	207.8	214.4	199.2	195.1	204.4
BANANAS		CENTRAL AMERICA/ECUADOR, US IMPORTER'S PRICE, FOB US PORTS										US CENTS / LB.	
42.42	43.17	43.62	41.98	41.84	41.04	41.19	41.35	43.86	47.44	48.04	42.95	42.15	42.56
PEPPER		INDONESIA, MUNTOK, WHITE FAQ EXW ROTTERDAM										US DOLLARS / TONNE	
11165	14093	13555	13673	13613	13700	13967	14400	13748	13927	13600	14753	14682	15500
SOYBEAN MEAL		44/45% PROTEIN, FOB EX-MILL HAMBURG										US DOLLARS / TONNE	
548	420	485	456	440	460	453	431	412	392	380	371	372	389
FISH MEAL		ANY ORIGIN, 64/65% PROTEIN, FREE CARRIER PRICE, BREMEN										US DOLLARS / TONNE	
1650	1681	1773	1723	1770	1836	1890	1790	1717	1638	1539	1525	1506	1466
COFFEE 1		COLOMBIAN MILD ARABICAS, EX-DOCK USA (I.C.A.)										US CENTS / LB.	
167.3	177.5	210.42	202.77	219.27	203.71	191.53	182.32	171.68	151.94	155.30	148.45	150.58	142.24
COFFEE 2		BRAZILIAN AND OTHER NATURAL ARABICAS, EX-DOCK USA (I.C.A.)										US CENTS / LB.	
134.0	146.7	171.99	168.11	181.58	169.10	157.87	151.21	143.32	127.81	131.63	124.60	120.85	111.92
COFFEE 3		OTHER MILD ARABICAS, EX-DOCK USA (I.C.A.)										US CENTS / LB.	
167.9	186.2	214.50	212.01	227.06	212.93	200.59	190.90	179.94	160.02	164.95	158.45	159.77	153.29
COFFEE 4		OTHER MILD ARABICAS, EX-DOCK EU (I.C.A.)										US CENTS / LB.	
165.5	184.2	212.02	209.22	224.20	207.27	191.70	189.75	177.98	161.18	163.41	158.49	159.75	155.12
COFFEE 5		ROBUSTAS, EX-DOCK USA (I.C.A.)										US CENTS / LB.	
100.2	101.4	105.07	105.57	109.39	106.81	103.51	102.33	103.74	98.07	98.73	94.35	96.89	92.71
COFFEE 6		ROBUSTAS, EX-DOCK EU (I.C.A.)										US CENTS / LB.	
93.16	95.02	99.34	99.53	103.80	102.33	97.76	97.21	97.28	91.04	90.79	86.17	88.98	86.03
COFFEE 7		COMPOSITE INDICATOR PRICE 1976 VERSION										US CENTS / LB.	
134.0	143.8	159.79	158.79	168.23	159.87	152.05	146.62	141.84	129.05	131.84	126.40	128.33	123.00

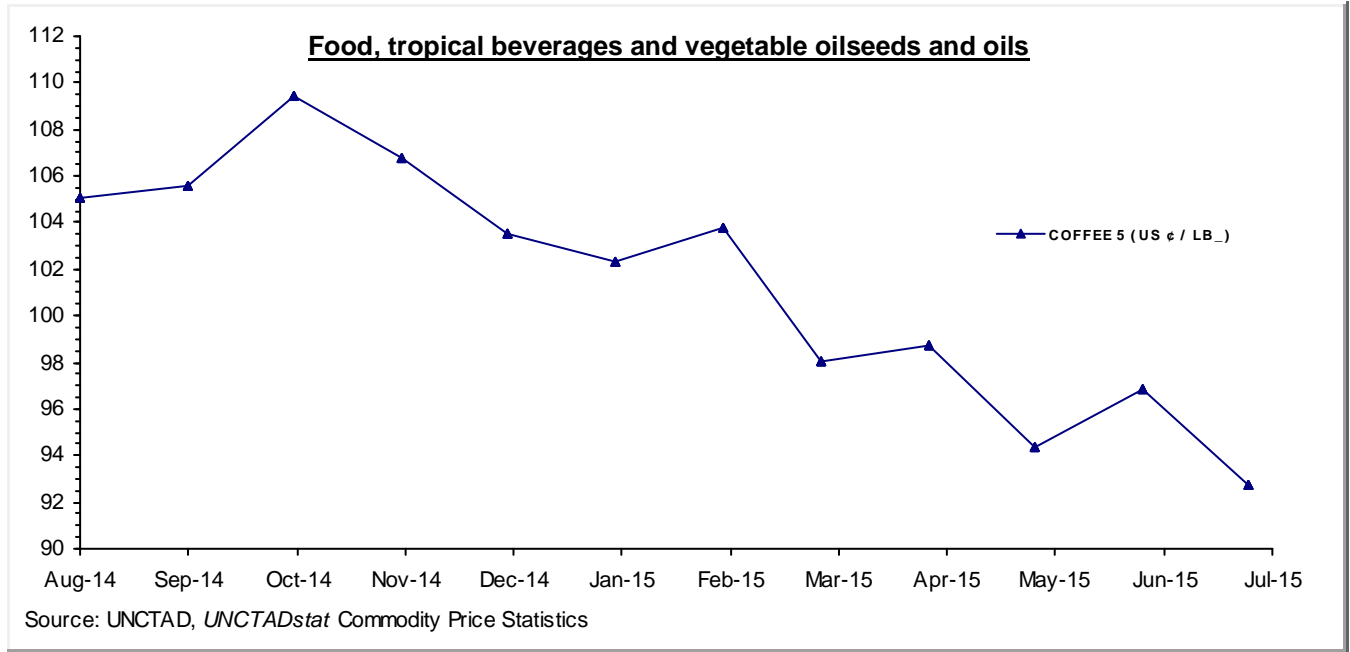
MONTHLY AVERAGE PRICES

1 - FOOD, TROPICAL BEVERAGES AND VEGETABLE OILSEEDS AND OILS

Moving averages		Aug 14	Sep 14	Oct 14	Nov 14	Dec 14	Jan 15	Feb 15	Mar 15	Apr 15	May 15	Jun 15	Jul 15
Aug 13 to Jul 14	Aug 14 to Jul 15												
COFFEE 8		ICO COMPOSITE INDICATOR PRICE											US CENTS / LB.
133	143.7	163.08	161.79	172.88	162.17	150.66	148.24	141.10	127.04	129.02	123.49	124.97	119.77
COCOA		AVERAGE OF DAILY PRICES, NEW YORK/LONDON, 3 MONTHS FUTURES											US CENTS / LB.
112.7	138.9	148.34	146.10	140.65	131.96	134.16	132.50	133.67	130.74	130.10	140.43	146.92	150.87
COCOA SDR		AS ABOVE											SDRs / TONNE
1634	2131	2142.71	2147.39	2086.22	1983.45	2030.76	2053.67	2086.24	2080.68	2073.02	2204.41	2305.68	2382.30
TEA		KENYA, BEST PEKOE FANNINGS 1, MOMBASA AUCTION PRICE											US CENTS / KG.
235.3	287.4	235.8	233.0	256.2	243.3	243.3	269.6	296.4	307.6	290.7	313.8	355.9	403.0
SOYBEANS		US, NO. 2 YELLOW, CIF ROTTERDAM											US DOLLARS / TONNE
536	419	460	432	425	449	446	423	407	404	395	389	397	405
SOYBEAN OIL		DUTCH, FOB EX-MILL											US DOLLARS / TONNE
976	799	857	851	836	830	820	799	772	747	749	781	793	751
SUNFLOWER OIL		EU, FOB, N.W. EUROPEAN PORTS											US DOLLARS / TONNE
951	852	828	823	874	892	877	837	803	801	838	904	918	832
GROUNDNUT OIL		ANY ORIGIN, CIF ROTTERDAM											US DOLLARS / TONNE
1406	1359	1350	1360	1365	1368	1370	1391	1366	1356	1348	1345	1345	1345
COPRA		PHILIPPINES/INDONESIA, CIF N.W. EUROPEAN PORTS											US DOLLARS / TONNE
828	763	770	785	769	795	813	764	794	721	714	748	748	735
COCONUT OIL		PHILIPPINES/INDONESIA, CIF ROTTERDAM											US DOLLARS / TONNE
1238	1150	1172	1181	1150	1194	1217	1155	1188	1096	1080	1133	1131	1100
PALM KERNEL OIL		MALAYSIA/INDONESIA, CIF ROTTERDAM											US DOLLARS / TONNE
1140	967	943	904	939	971	968	1019	1077	1043	985	966	919	869
PALM OIL		INDONESIA/MALAYSIA, 5% FFA, CIF N.W. EUROPEAN PORTS											US DOLLARS / TONNE
882	691	762	709	724	731	693	685	688	674	662	659	671	635
COTTONSEED OIL		UNITED STATES, CRUDE, FOB MISSISSIPPI VALLEY											US DOLLARS / TONNE
1327	1060	1222	1180	1032	904	926	1023	1058	1071	1044	1071	1120	1070

MONTHLY AVERAGE PRICES

1 - FOOD, TROPICAL BEVERAGES AND VEGETABLE OILSEEDS AND OILS



MONTHLY AVERAGE PRICES

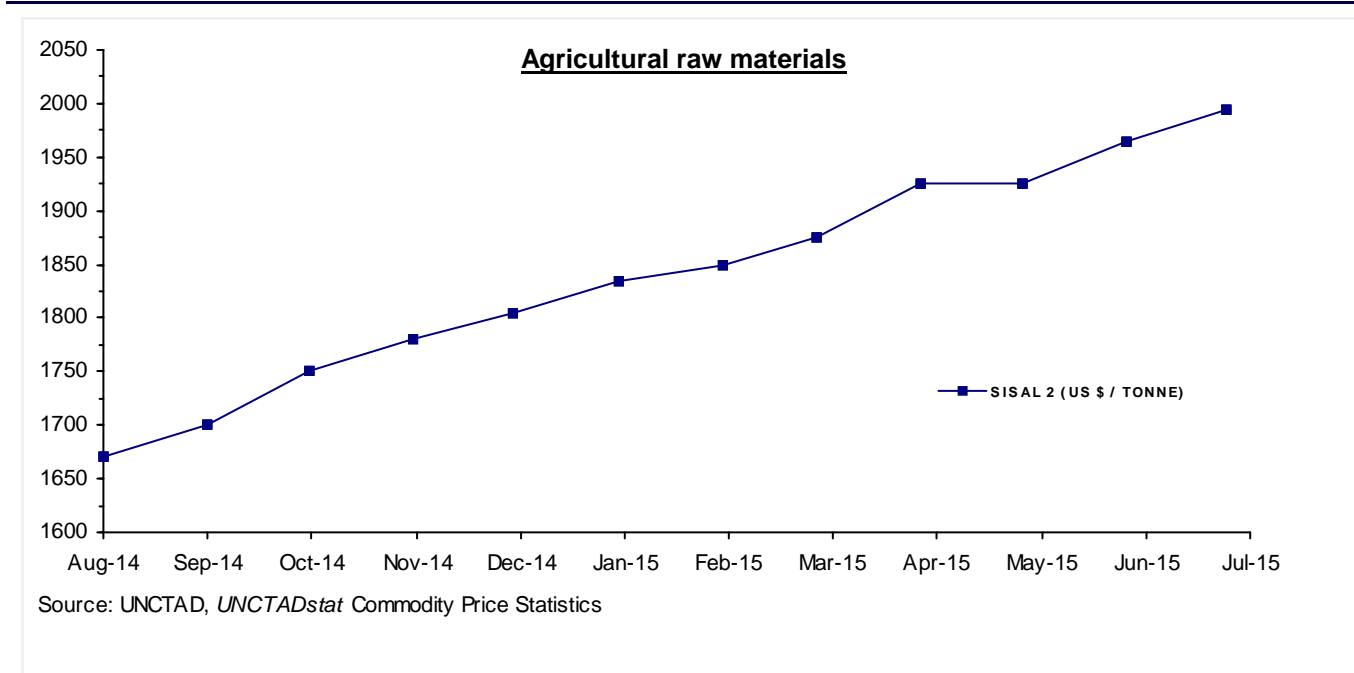
2 - AGRICULTURAL RAW MATERIALS

Moving averages		Aug 14	Sep 14	Oct 14	Nov 14	Dec 14	Jan 15	Feb 15	Mar 15	Apr 15	May 15	Jun 15	Jul 15
Aug 13 to Jul 14	Aug 14 to Jul 15												
LINSEED OIL		ANY ORIGIN, EX-TANK, ROTTERDAM										US DOLLARS / TONNE	
1188	1175	1184	1114	1183	1315	1320	1198	1158	1115	1123	1116	1113	1161
TOBACCO		UNMANUFACTURED, US IMPORT UNIT VALUE										US DOLLARS / TONNE	
4924	4944	4920	4924	4943	4922	4926	4923	4911	4962	4987	5018	4947r	4947e
COTTON 3		US, MEMPHIS EASTERN, MIDD. 1-3/32", CFR FAR EASTERN										US CENTS / LB.	
94.69	73.74	76.06	75.19	73.85	71.44	71.25	69.63	73.63	72.88	74.85	74.81	75.38	75.85
COTTON 4		US, MEMPHIS/ORLEANS/TEXAS, MIDD.1", CFR FAR EASTERN										US CENTS / LB.	
94.26	73.16	75.81	74.94	73.40	70.69	70.50	68.94	73.13	72.13	74.20	74.50	74.63	75.10
COTTON 6		INDEX A (M 1-3/32"), COTTON OUTLOOK, LIVERPOOL										US CENTS / LB.	
90.05	70.78	74.00	73.38	70.34	67.53	68.30	67.35	69.84	69.35	71.70	72.86	72.35	72.35
WOOL 1		AUSTRALIAN FINE WOOL 19 MICRON										US DOLLARS / TONNE	
11212	10256	10697.5	10565.0	10440.1	10419.7	10021.3	9670.3	9469.1	9294.5	9867.6	11145.8	11378.0	10096.5
WOOL 2		AUSTRALIAN COARSE WOOL 23 MICRON										US DOLLARS / TONNE	
10886	9481	10313.1	9876.8	9589.3	9684.3	9356.2	8993.9	8924.4	8711.6	8831.4	9763.4	10285.7	9443.5
JUTE		BANGLADESH, BWD, FOB MONGLA										US DOLLARS / TONNE	
604	699	600	650	720	700	710	730	760	750	720	710	680	660
SISAL 1		TANZANIA/KENYA, NO.2 & 3 LONG, CIF MAIN EUROPEAN PORTS										US DOLLARS / TONNE	
1565	1948	1770	1800	1850	1880	1905	1935	1950	1975	2050	2050	2090r	2120
SISAL 2		TANZANIA/KENYA, NO.3 & UG, CIF MAIN EUROPEAN PORTS										US DOLLARS / TONNE	
1456	1840	1670	1700	1750	1780	1805	1835	1850	1875	1925	1925	1965r	1995
CATTLE HIDES		CHICAGO, PACKER'S HEAVY NATIVE STEERS, FOB										US CENTS / LB.	
105	105	111	115	114	115	109	107	106	105	100	96	94	83
NON-CONIFEROUS WOODS		UK, IMPORT PRICE INDEX (DOLLAR EQUIVALENT)										INDEX 2010=100	
102.3	97.7	103.4	102.7	102.8	101.4	100.9	98.2	96.7	95.6	93.9	92.2	92.2	92.2
TROPICAL LOGS 1		SAPELE, LM, FOB UK IMPORT PRICE										US DOLLARS / CUBIC METER	
476.3	413.3	466.1	451.8	443.5	436.6	431.2	407.6	397.5	379.2	377.8	390.8	392.5	385.1
TROPICAL LOGS 2		OKOUME (60% CI, 40% CE, 20% CS), FOB										US DOLLARS / CUBIC METER	
433.5	356.1	452.7	438.5	431.0	424.1	418.6	380.8	363.2	308.1	258.7	267.6	269.2	261.1
TROPICAL SAWNWOOD		MALAYSIA, DARK RED MERANTI, SEL/BTR, CFR PLUS COMMISSION UK										£ / CUBIC METER	
545.2	544.9	545.0	545.0	545.0	545.0	545.0	545.0	545.0	545.0	544.2	545.1	544.5	545.0
PLYWOOD		AFRICA/SOUTHEAST ASIA, LAUAN, WHOLESALE PRICE, SPOT TOKYO										US CENTS / SHEET	
539.6	470.0	530.41	509.09	505.60	469.80	457.45	461.30	460.18	453.60	456.80	452.10	441.29	442.54

MONTHLY AVERAGE PRICES

2 - AGRICULTURAL RAW MATERIALS

Moving averages		Aug 14	Sep 14	Oct 14	Nov 14	Dec 14	Jan 15	Feb 15	Mar 15	Apr 15	May 15	Jun 15	Jul 15
Aug 13 to Jul 14	Aug 14 to Jul 15												
PLYWOOD CM		AS ABOVE										US DOLLARS / CUBIC METER	
814.5	709.5	800.64	768.46	763.19	709.15	690.51	696.32	694.63	684.70	689.53	682.44	666.12	668.01
RUBBER 1		RSS 3, MONTHLY AVERAGE OF WEIGHTED DAILY FUTURE PRICES										US CENTS / KG	
232.6	171.4	185.0	164.4	162.0	163.7	160.3	165.4	180.8	173.5	170.0	184.2	182.9	164.0
RUBBER 2		TSR20 NEW YORK CIF										US DOLLARS / TONNE	
2286	1748	1904.10	1794.10	1765.60	1790.00	1734.00	1697.30	1686.80	1663.50	1643.90	1776.80	1817.00	1700.60



MONTHLY AVERAGE PRICES

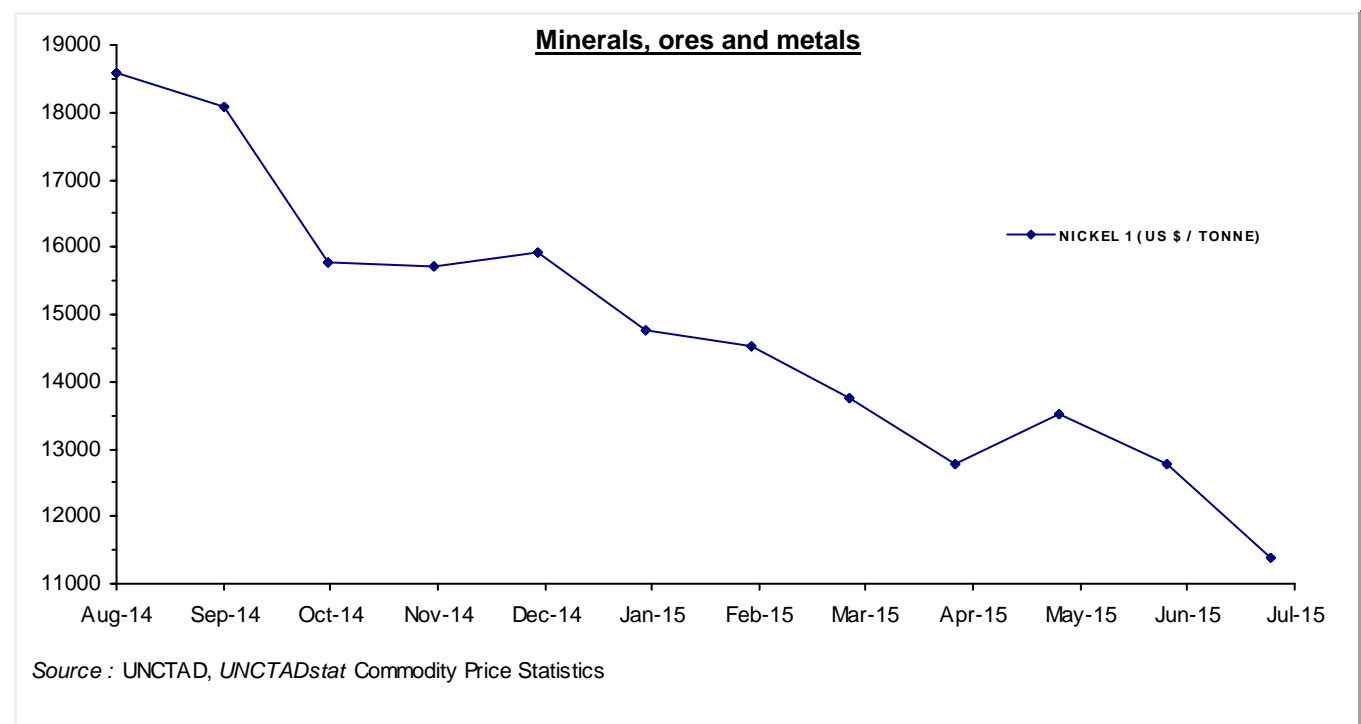
3 - MINERALS, ORES AND METALS

Moving averages		Aug 14	Sep 14	Oct 14	Nov 14	Dec 14	Jan 15	Feb 15	Mar 15	Apr 15	May 15	Jun 15	Jul 15
Aug 13 to Jul 14	Aug 14 to Jul 15												
PHOSPHATE ROCK		KHOURIBGA, 70% BPL, CONTRACT, FAS CASABLANCA										US DOLLARS / TONNE	
113	114.6	110.00	115.00	115.00	115.00	115.00	115.00	115.00	115.00	115.00	115.00	115.00	115.00
MANGANESE ORE INDEX		44% MN, CIF TIANJIN										US DOLLARS / TONNE	
485	378	431	437	440	435	433	417	376	352	309	302	300	302
MANGANESE FLAKE		99.7% ELECTROLYTIC, FREE MARKET, IN WAREHOUSE										US DOLLARS / TONNE	
2229	2087	2333	2378	2327	2276	2137	2113	2068	2045	1989	1788	1815	1780
IRON ORE 1		62% Fe, CHINA IMPORT, SPOT (CFR TIANJIN PORT)										US DOLLARS / DRY TONNE	
120.1	67.8	92.61	82.37	80.39	73.59	69.26	67.84	62.81	57.10	51.80	60.82	62.90	52.15
IRON ORE 2		62% Fe, OFFSHORE EXPORT PRICE AUSTRALIA TO CHINA, CIF										US DOLLARS / DRY TONNE	
120.8	67.94	93.00	83.00	81.00	74.00	68.00	68.00	63.00	58.00	52.05	60.21	62.64	52.39
IRON ORE 3		65% Fe, OFFSHORE EXPORT PRICE BRAZIL TO CHINA, CIF										US DOLLARS / DRY TONNE	
130.3	75.39	101.00	92.00	89.00	83.00	76.00	77.00	70.00	64.00	57.30	66.67	69.93	58.83
ALUMINIUM		LONDON METAL EXCHANGE, HIGH GRADE, CASH										US DOLLARS / TONNE	
1778	1856	2029.9	1992.1	1937.0	2053.6	1912.9	1808.1	1820.4	1772.3	1816.8	1804.8	1683.2	1637.8
COPPER 1		LONDON METAL EXCHANGE, GRADE A, CASH										STERLING POUNDS / TONNE	
4286	3986	4190.1	4214.1	4193.7	4247.6	4105.7	3838.2	3719.9	3957.8	4032.2	4073.9	3751.4	3507.3
COPPER 1 \$		AS ABOVE										US DOLLARS / TONNE	
7032	6234	6998.7	6874.0	6738.9	6701.9	6419.7	5822.2	5700.7	5930.0	6032.6	6295.8	5840.6	5457.4
COPPER 2		US PRODUCER/REFINERY, WIRE BARS, FOB										US CENTS / LB.	
327.5	288.3	321.3	314.7	309.1	306.8	294.8	270.8	265.5	276.4	280.8r	293.5r	272.1e	254.1e
NICKEL 1		LONDON METAL EXCHANGE, CASH										US DOLLARS / TONNE	
15675	14793	18572.4	18075.8	15765.3	15702.4	15914.3	14766.9	14531.1	13742.2	12779.8	13505.0	12776.6	11380.5
NICKEL 2		NEW YORK DEALER, 4X4 CATHODES, ESTIMATED MARKET PRICE										US CENTS / LB.	
721.6	676.7	849.6e	826.9e	721.2e	718.3e	728.0e	675.5e	664.7e	628.6e	584.6e	617.8e	584.5e	520.6e
LEAD 1		LONDON METAL EXCHANGE, CASH SETTLEMENT										STERLING POUNDS / TONNE	
1289	1246	1338.7	1301.3	1268.2	1282.8	1237.5	1207.3	1177.6	1192.1	1337.2	1296.0	1181.1	1133.4
LEAD 1 \$		AS ABOVE										US DOLLARS / TONNE	
2116	1949	2236.1	2122.7	2037.9	2024.0	1935.0	1831.4	1804.7	1786.2	2000.6	2002.9	1838.8	1763.6
LEAD 2		NORTH AMERICA, PRODUCER PRICE										US CENTS / LB.	
116.7	108.4	124.5e	118.1e	113.4e	112.6e	107.8e	101.8e	100.4e	99.4e	111.3e	111.5e	102.2e	98.1e
ZINC 1		LONDON METAL EXCHANGE, SPECIAL HIGH GRADE, CASH SETTLEMENT										US DOLLARS / TONNE	
2007	2179	2328.9	2293.7	2272.4	2259.1	2171.4	2110.3	2102.7	2028.6	2206.5	2289.1	2087.1	2001.7
ZINC 2		NORTH AMERICA, SPECIAL HIGH GRADE										US CENTS / LB.	
100.1	107.4	114.7	113.1	112.0	111.2	107.3	104.4	103.9	100.4	108.4	112.4r	102.5r	98.3e
TIN 1		LONDON METAL EXCHANGE, CASH										US DOLLARS / TONNE	
22748	18336	22283	21115	19903	19962	19820	19453	18284	17454	15979	15819	15010	14954

MONTHLY AVERAGE PRICES

3 - MINERALS, ORES AND METALS

Moving averages		Aug 14	Sep 14	Oct 14	Nov 14	Dec 14	Jan 15	Feb 15	Mar 15	Apr 15	May 15	Jun 15	Jul 15
Aug 13 to Jul 14	Aug 14 to Jul 15												
TIN 2		KUALA LUMPUR TIN MARKET, EX-SMELTER										MALAYSIAN DOLLARS / KG.	
73.4	64.02	71.01	68.19	65.10	66.69	68.71	69.64	65.75	64.40	58.34	57.13	56.70	56.55
TIN 2 \$		AS ABOVE										US DOLLARS / TONNE	
22623	18356	22339.3	21186.9	19901.6	19919.4	19747.1	19444.4	18276.1	17494.3	16053.1	15873.9	15161.2	14873.4
TUNGSTEN APT		EUROPEAN FREE MARKET										US DOLLARS / MTU	
380.7	290.6	362.78	353.75	344.25	326.88	306.83	291.94	281.00	271.81	254.17	243.06	227.50	222.75
FERRO-TUNGSTEN		BASIS 75% W, ROTTERDAM, DUTY UNPAID, IN WAREHOUSE										US DOLLARS / KG	
45.68	34.69	40.46	40.50	38.93	36.48	34.83	34.25	32.93	33.65	34.31	32.69	29.54	27.72
GOLD		LONDON, 99.5% FINE, AFTERNOON FIXING										US DOLLARS / TROY OUNCE	
1298	1209	1295.99	1238.82	1222.49	1176.30	1202.29	1251.85	1227.19	1178.63	1197.91	1199.05	1181.51	1130.04
SILVER		HANDY & HARMAN, 99.9% GRADE REFINED, NEW YORK										US CENTS / TROY OUNCE	
2070	1684	1973.56	1836.88	1716.33	1596.61	1629.48	1723.55	1678.71	1624.00	1634.10	1683.28	1607.46	1505.32
CRUDE PETROLEUM 1		UK BRENT, DUBAI & WTI AVERAGE, EQUALLY WEIGHTED, SPOT, FOB										US DOLLARS / BARREL	
105.5	67.54	100.05	95.89	86.13	76.96	60.55	47.45	54.93	52.83	57.42	62.50	61.30	54.43
CRUDE PETROLEUM 2		UK BRENT, LIGHT BLEND 38° API, SPOT PRICE, FOB UK PORTS										US DOLLARS / BARREL	
109.3	69.29	101.92	97.34	87.27	78.44	62.16	48.42	57.93	55.79	59.39	64.56	62.35	55.87
CRUDE PETROLEUM 3		DUBAI, MEDIUM, FATEH 32° API, SPOT PRICE, FOB DUBAI										US DOLLARS / BARREL	
106.0	68.37	101.85	96.99	86.72	76.73	60.39	46.34	56.15	54.91	58.67	63.67	61.76	56.27



SOURCES AND NOTES

Sources:

Bloomberg Terminal Services
Cotton Outlook, Liverpool, UK
Food and Agricultural Organization (FAO), Italy
International Cocoa Organization (ICCO), London, UK
International Coffee Organization (ICO), London, UK
International Grains Council (IGC), London, UK
International Monetary Fund (IMF), Washington D.C., USA
International Rubber Study Group (IRSG), Singapore
International Sugar Organization, London, UK
International Tropical Timber Organization (ITTO), Yokohama, Japan
Metal Bulletin, London, UK
Oil World, Hamburg, Germany
PLATTS, New York, USA
Singapore Commodity Exchange Ltd (SICOM), Singapore
The Public Ledger, London, UK
Thomson Reuters, *Datastream*
United States Department of Agriculture (USDA), Foreign Agriculture Service (FAS)
United States Geological Survey, Commodity Statistics and Information
World Bank, Washington D.C., USA

Explanation of symbols:

- " e " estimated figure
- " r " revised figure
- " .. " not available including no quotation
- " // " break in the series

The current and previous editions of the *Commodity Price Bulletin* are available in the Publications section of the Statistics portal of UNCTAD at <http://www.unctad.org>.

The long time series of annual and monthly commodity prices and prices indices are available in UNCTADstat at <http://unctadstat.unctad/WDS.org> as well as in the *Handbook of Statistics* DVD.

If you have any questions or comments concerning commodity price data, please do not hesitate to contact us:

E-mail: statistics@unctad.org