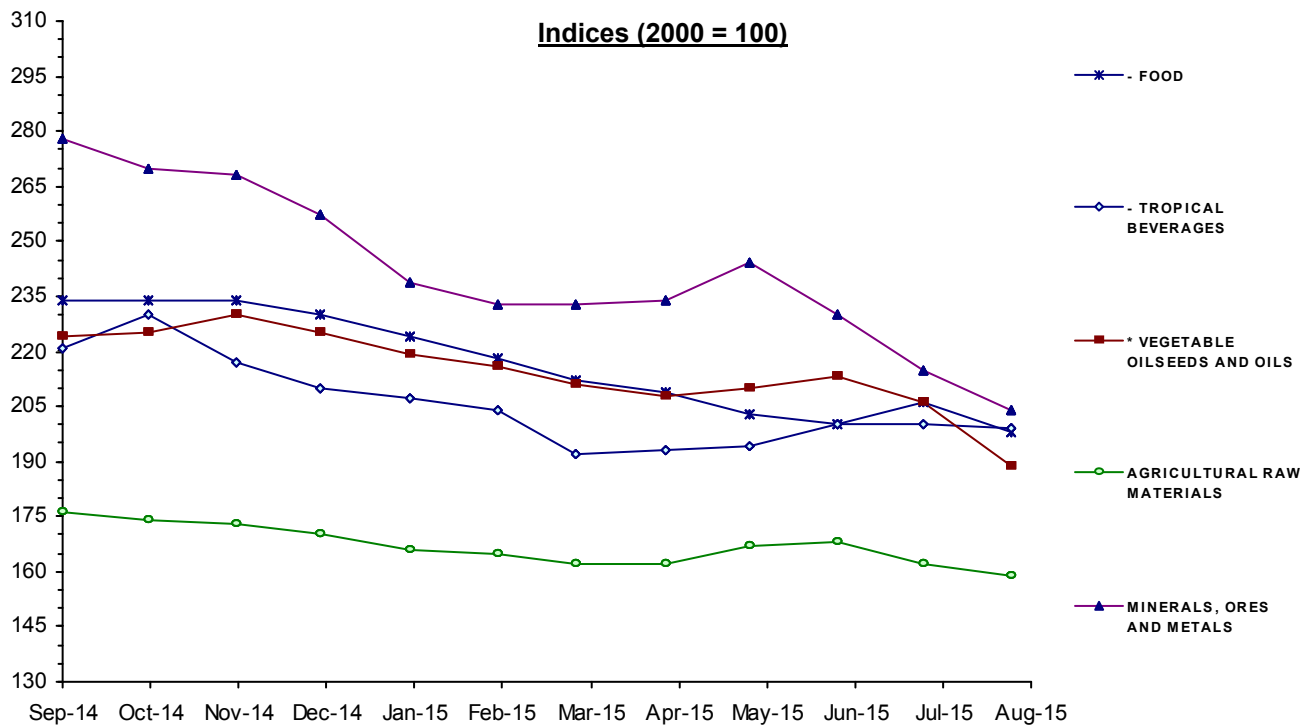


MONTHLY INDICES OF FREE MARKET PRICES IN US DOLLARS

2000 = 100

Moving averages		Sep 14	Oct 14	Nov 14	Dec 14	Jan 15	Feb 15	Mar 15	Apr 15	May 15	Jun 15	Jul 15	Aug 15
Sep 13 to Aug 14	Sep 14 to Aug 15												
ALL FOOD													
242	216	232	233	232	228	222	216	210	208	203	201	205	197
* TROPICAL BEVERAGES AND FOOD													
238	216	232	234	233	228	222	216	210	207	202	200	205	198
- TROPICAL BEVERAGES													
196	206	221	230	217	210	207	204	192	193	194	200	200	199
- FOOD													
243	217	234	234	234	230	224	218	212	209	203	200	206	198
* VEGETABLE OILSEEDS AND OILS													
268	215	224	225	230	225	219	216	211	208	210	213	206	189
AGRICULTURAL RAW MATERIALS													
196	167	176	174	173	170	166	165	162	162	167	168	162	159
MINERALS, ORES AND METALS													
290	242	278	270	268	257	239	233	233	234	244	230	215	204
PRICE INDEX - ALL GROUPS IN CURRENT DOLLARS													
248	216	236	235	234	228	219	214	210	208	209	204	202	194
PRICE INDEX - ALL GROUPS IN SDR'S													
213	200	208	209	211	207	203	200	200	199	197	192	191	183



Source: UNCTAD, UNCTADstat Commodity Price Statistics



COMMODITY PRICE BULLETIN

UNITED NATIONS CONFERENCE ON TRADE AND DEVELOPMENT

September 2015



MONTHLY AVERAGE PRICES

1 - FOOD, TROPICAL BEVERAGES AND VEGETABLE OILSEEDS AND OILS

Moving averages		Sep 14	Oct 14	Nov 14	Dec 14	Jan 15	Feb 15	Mar 15	Apr 15	May 15	Jun 15	Jul 15	Aug 15
Sep 13 to Aug 14	Sep 14 to Aug 15												
WHEAT 1		ARGENTINA, TRIGO PAN UP RIVER, FOB										US DOLLARS / TONNE	
331	237	237	239	255	251	253	241	229	227	227	226	230	226
WHEAT 2		US, NO. 2, HARD RED WINTER (ORDINARY), FOB GULF										US DOLLARS / TONNE	
313	255	274	286	282	289	261	250	249	244	233	238	236	216
MAIZE 1		ARGENTINA, ROSARIO (UP RIVER), FOB										US DOLLARS / TONNE	
210.6	174.1	165.0	169.0	182.0	199.0	185.0	178.0	169.0	168.0	169.0	170.0	176.0	159.0
MAIZE 2		US, NO. 3 YELLOW, FOB GULF										US DOLLARS / TONNE	
215	179.6	180.0	183.0	192.0	189.0	181.0	180.0	177.0	177.0	171.0	173.0	185.0	167.0
RICE		THAILAND, WHITE 5% BROKEN, FOB BANGKOK										US DOLLARS / TONNE	
437	402	437	433	419	411	410	410	401	392	382	371	388	376
SUGAR		AVERAGE OF I.S.A. DAILY PRICES, FOB & STOWED CARIBBEAN PORTS										US CENTS / LB.	
17.5	14.21	16.02	16.75	16.19	15.33	15.34	14.59	13.16	13.08	13.34	12.46	12.77	11.50
BEEF		AUSTRALIA/NEW ZEALAND, US IMPORT PRICE, FOB ENTRY PORT										US CENTS / LB.	
197.6	226.3	272.3	266.9	261.5	239.6	232.0	209.9	207.8	214.4	199.2	195.1	204.4	212.0
BANANAS		CENTRAL AMERICA/ECUADOR, US IMPORTER'S PRICE, FOB US PORTS										US CENTS / LB.	
42.51	43.15	41.98	41.84	41.04	41.19	41.35	43.86	47.44	48.04	42.95	42.15	42.56	43.39
PEPPER		INDONESIA, MUNTOK, WHITE FAQ EXW ROTTERDAM										US DOLLARS / TONNE	
11516	14235	13673	13613	13700	13967	14400	13748	13927	13600	14753	14682	15500	15255
SOYBEAN MEAL		44/45% PROTEIN, FOB EX-MILL HAMBURG										US DOLLARS / TONNE	
541	411	456	440	460	453	431	412	392	380	371	372	389	373
FISH MEAL		ANY ORIGIN, 64/65% PROTEIN, FREE CARRIER PRICE, BREMEN										US DOLLARS / TONNE	
1655	1656	1723	1770	1836	1890	1790	1717	1638	1539	1525	1506	1466	1469
COFFEE 1		COLOMBIAN MILD ARABICAS, EX-DOCK USA (I.C.A.)										US CENTS / LB.	
173	172.1	202.77	219.27	203.71	191.53	182.32	171.68	151.94	155.30	148.45	150.58	142.24	144.96
COFFEE 2		BRAZILIAN AND OTHER NATURAL ARABICAS, EX-DOCK USA (I.C.A.)										US CENTS / LB.	
139.0	142.2	168.11	181.58	169.10	157.87	151.21	143.32	127.81	131.63	124.60	120.85	111.92	118.39
COFFEE 3		OTHER MILD ARABICAS, EX-DOCK USA (I.C.A.)										US CENTS / LB.	
174.4	181.6	212.01	227.06	212.93	200.59	190.90	179.94	160.02	164.95	158.45	159.77	153.29	158.78
COFFEE 4		OTHER MILD ARABICAS, EX-DOCK EU (I.C.A.)										US CENTS / LB.	
171.9	179.5	209.22	224.20	207.27	191.70	189.75	177.98	161.18	163.41	158.49	159.75	155.12	155.79
COFFEE 5		ROBUSTAS, EX-DOCK USA (I.C.A.)										US CENTS / LB.	
100.5	100.3	105.57	109.39	106.81	103.51	102.33	103.74	98.07	98.73	94.35	96.89	92.71	91.94
COFFEE 6		ROBUSTAS, EX-DOCK EU (I.C.A.)										US CENTS / LB.	
93.71	93.79	99.53	103.80	102.33	97.76	97.21	97.28	91.04	90.79	86.17	88.98	86.03	84.60
COFFEE 7		COMPOSITE INDICATOR PRICE 1976 VERSION										US CENTS / LB.	
137.5	141	158.79	168.23	159.87	152.05	146.62	141.84	129.05	131.84	126.40	128.33	123.00	125.36



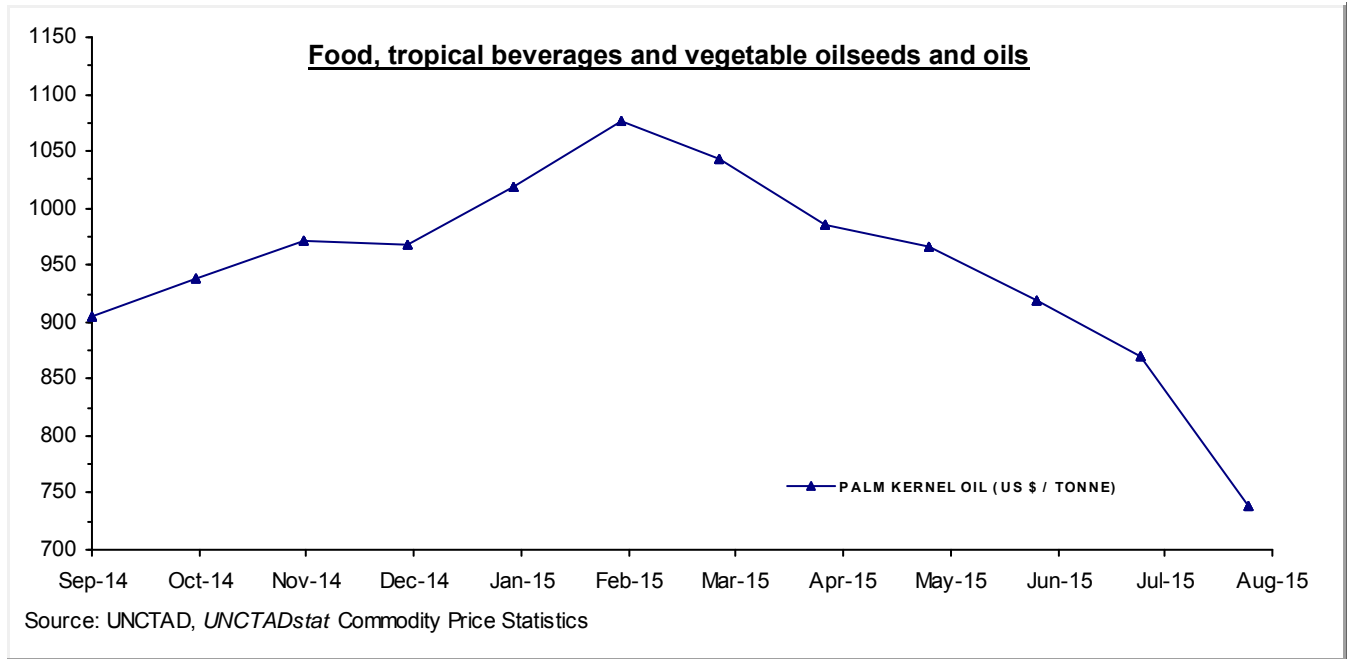
MONTHLY AVERAGE PRICES

1 - FOOD, TROPICAL BEVERAGES AND VEGETABLE OILSEEDS AND OILS

Moving averages		Sep 14	Oct 14	Nov 14	Dec 14	Jan 15	Feb 15	Mar 15	Apr 15	May 15	Jun 15	Jul 15	Aug 15
Sep 13 to Aug 14	Sep 14 to Aug 15												
COFFEE 8		ICO COMPOSITE INDICATOR PRICE											US CENTS / LB.
136.8	140.2	161.79	172.88	162.17	150.66	148.24	141.10	127.04	129.02	123.49	124.97	119.77	121.21
COCOA		AVERAGE OF DAILY PRICES, NEW YORK/LONDON, 3 MONTHS FUTURES											US CENTS / LB.
112.7	138.4	146.10	140.65	131.96	134.16	132.50	133.67	130.74	130.10	140.43	146.92	150.87	143.02
COCOA SDR		AS ABOVE											SDRs / TONNE
1634	2140	2147.39	2086.22	1983.45	2030.76	2053.67	2086.24	2080.68	2073.02	2204.41	2305.68	2382.30	2249.75
TEA		KENYA, BEST PEKOE FANNINGS 1, MOMBASA AUCTION PRICE											US CENTS / KG.
234.3	300	233.0	256.2	243.3	243.3	269.6	296.4	307.6	290.7	313.8	355.9	403.0	387.3
SOYBEANS		US, NO. 2 YELLOW, CIF ROTTERDAM											US DOLLARS / TONNE
531	413	432	425	449	446	423	407	404	395	389	397	405	381
SOYBEAN OIL		DUTCH, FOB EX-MILL											US DOLLARS / TONNE
964	788	851	836	830	820	799	772	747	749	781	793	751	730
SUNFLOWER OIL		EU, FOB, N.W. EUROPEAN PORTS											US DOLLARS / TONNE
940	851	823	874	892	877	837	803	801	838	904	918	832	812
GROUNDNUT OIL		ANY ORIGIN, CIF ROTTERDAM											US DOLLARS / TONNE
1378	1358	1360	1365	1368	1370	1391	1366	1356	1348	1345	1345	1345	1331
COPRA		PHILIPPINES/INDONESIA, CIF N.W. EUROPEAN PORTS											US DOLLARS / TONNE
843	756	785	769	795	813	764	794	721	714	748	748	735	689
COCONUT OIL		PHILIPPINES/INDONESIA, CIF ROTTERDAM											US DOLLARS / TONNE
1261	1138	1181	1150	1194	1217	1155	1188	1096	1080	1133	1131	1100	1037
PALM KERNEL OIL		MALAYSIA/INDONESIA, CIF ROTTERDAM											US DOLLARS / TONNE
1147	950	904	939	971	968	1019	1077	1043	985	966	919	869	739
PALM OIL		INDONESIA/MALAYSIA, 5% FFA, CIF N.W. EUROPEAN PORTS											US DOLLARS / TONNE
876	673	709	724	731	693	685	688	674	662	659	671	635	549
COTTONSEED OIL		UNITED STATES, CRUDE, FOB MISSISSIPPI VALLEY											US DOLLARS / TONNE
1348	1042	1180	1032	904	926	1023	1058	1071	1044	1071	1120	1070	1005

MONTHLY AVERAGE PRICES

1 - FOOD, TROPICAL BEVERAGES AND VEGETABLE OILSEEDS AND OILS



MONTHLY AVERAGE PRICES

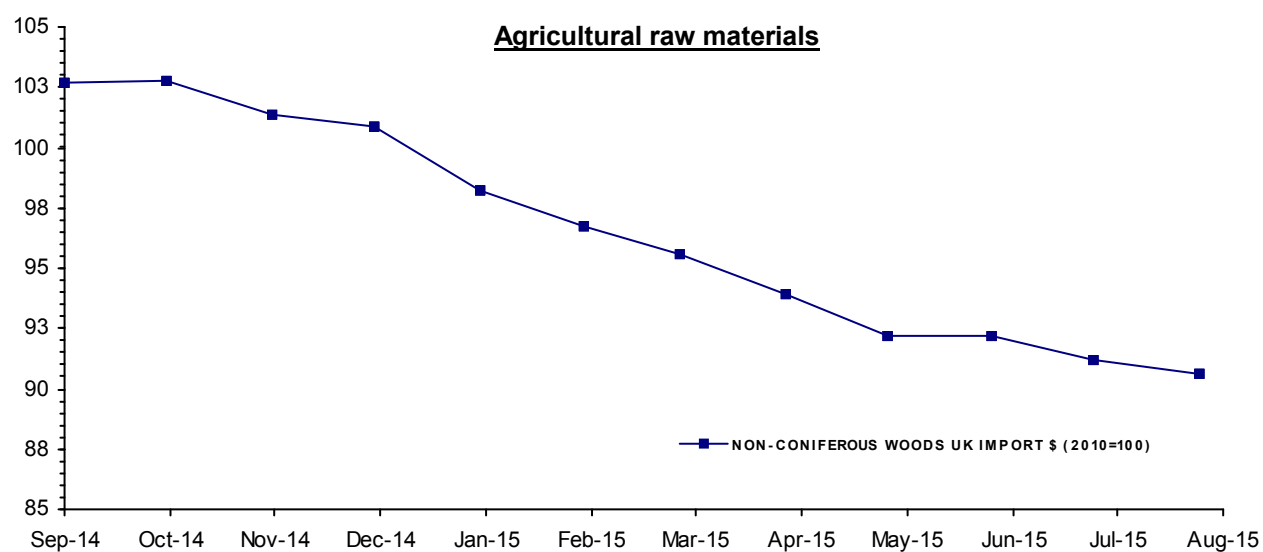
2 - AGRICULTURAL RAW MATERIALS

Moving averages		Sep 14	Oct 14	Nov 14	Dec 14	Jan 15	Feb 15	Mar 15	Apr 15	May 15	Jun 15	Jul 15	Aug 15
Sep 13 to Aug 14	Sep 14 to Aug 15												
LINSEED OIL		ANY ORIGIN, EX-TANK, ROTTERDAM										US DOLLARS / TONNE	
1191	1169	1114	1183	1315	1320	1198	1158	1115	1123	1116	1113	1161	1111
TOBACCO		UNMANUFACTURED, US IMPORT UNIT VALUE										US DOLLARS / TONNE	
4944	4935	4924	4943	4922	4926	4923	4911	4962	4987	5018	4947	4878r	4878e
COTTON 3		US, MEMPHIS EASTERN, MIDD. 1-3/32", CFR FAR EASTERN										US CENTS / LB.	
93	73.85	75.19	73.85	71.44	71.25	69.63	73.63	72.88	74.85	74.81	75.38	75.85	77.38
COTTON 4		US, MEMPHIS/ORLEANS/TEXAS, MIDD.1", CFR FAR EASTERN										US CENTS / LB.	
92.54	73.24	74.94	73.40	70.69	70.50	68.94	73.13	72.13	74.20	74.50	74.63	75.10	76.75
COTTON 6		INDEX A (M 1-3/32"), COTTON OUTLOOK, LIVERPOOL										US CENTS / LB.	
88.49	70.6	73.38	70.34	67.53	68.30	67.35	69.84	69.35	71.70	72.86	72.35	72.35	71.82
WOOL 1		AUSTRALIAN FINE WOOL 19 MICRON										US DOLLARS / TONNE	
11245	10216	10565.0	10440.1	10419.7	10021.3	9670.3	9469.1	9294.5	9867.6	11145.8	11378.0	10096.5	10226.8
WOOL 2		AUSTRALIAN COARSE WOOL 23 MICRON										US DOLLARS / TONNE	
10915	9438	9876.8	9589.3	9684.3	9356.2	8993.9	8924.4	8711.6	8831.4	9763.4	10285.7	9443.5	9792.8
JUTE		BANGLADESH, BWD, FOB MONGLA										US DOLLARS / TONNE	
605	706	650	720	700	710	730	760	750	720	710	680	660	680
SISAL 1		TANZANIA/KENYA, NO.2 & 3 LONG, CIF MAIN EUROPEAN PORTS										US DOLLARS / TONNE	
1587	1982	1800	1850	1880	1905	1935	1950	1975	2050	2050	2090	2120	2175
SISAL 2		TANZANIA/KENYA, NO.3 & UG, CIF MAIN EUROPEAN PORTS										US DOLLARS / TONNE	
1478	1871	1700	1750	1780	1805	1835	1850	1875	1925	1925	1965	1995	2050
CATTLE HIDES		CHICAGO, PACKER'S HEAVY NATIVE STEERS, FOB										US CENTS / LB.	
106	101	115	114	115	109	107	106	105	100	96	94	83	71
NON-CONIFEROUS WOODS		UK, IMPORT PRICE INDEX (DOLLAR EQUIVALENT)										INDEX 2010=100	
102.6	96.5	102.7	102.8	101.4	100.9	98.2	96.7	95.6	93.9	92.2	92.2	91.2	90.6
TROPICAL LOGS 1		SAPELE, LM, FOB UK IMPORT PRICE										US DOLLARS / CUBIC METER	
476.3	406.9	451.8	443.5	436.6	431.2	407.6	397.5	379.2	377.8	390.8	392.5	385.1	389.8
TROPICAL LOGS 2		OKOUME (60% CI, 40% CE, 20% CS), FOB										US DOLLARS / CUBIC METER	
441.8	340.2	438.5	431.0	424.1	418.6	380.8	363.2	308.1	258.7	267.6	269.2	261.1	261.8
TROPICAL SAWNWOOD		MALAYSIA, DARK RED MERANTI, SEL/BTR, CFR PLUS COMMISSION UK										£ / CUBIC METER	
545.2	545	545.0	545.0	545.0	545.0	545.0	545.0	545.0	544.2	545.1	544.5	545.0	545.8
PLYWOOD		AFRICA/SOUTHEAST ASIA, LAUAN, WHOLESALE PRICE, SPOT TOKYO										US CENTS / SHEET	
537.3	462.8	509.09	505.60	469.80	457.45	461.30	460.18	453.60	456.80	452.10	441.29	442.54	443.30

MONTHLY AVERAGE PRICES

2 - AGRICULTURAL RAW MATERIALS

Moving averages		Sep 14	Oct 14	Nov 14	Dec 14	Jan 15	Feb 15	Mar 15	Apr 15	May 15	Jun 15	Jul 15	Aug 15
Sep 13 to Aug 14	Sep 14 to Aug 15												
PLYWOOD CM		AS ABOVE										US DOLLARS / CUBIC METER	
811	698.5	768.46	763.19	709.15	690.51	696.32	694.63	684.70	689.53	682.44	666.12	668.01	669.15
RUBBER 1		RSS 3, MONTHLY AVERAGE OF WEIGHTED DAILY FUTURE PRICES										US CENTS / KG	
226.6	167.8	164.4	162.0	163.7	160.3	165.4	180.8	173.5	170.0	184.2	182.9	164.0	142.1
RUBBER 2		TSR20 NEW YORK CIF										US DOLLARS / TONNE	
2229	1721	1794.10	1765.60	1790.00	1734.00	1697.30	1686.80	1663.50	1643.90	1776.80	1817.00	1700.60	1588.00



Source: UNCTAD, *UNCTADstat* Commodity Price Statistics

MONTHLY AVERAGE PRICES

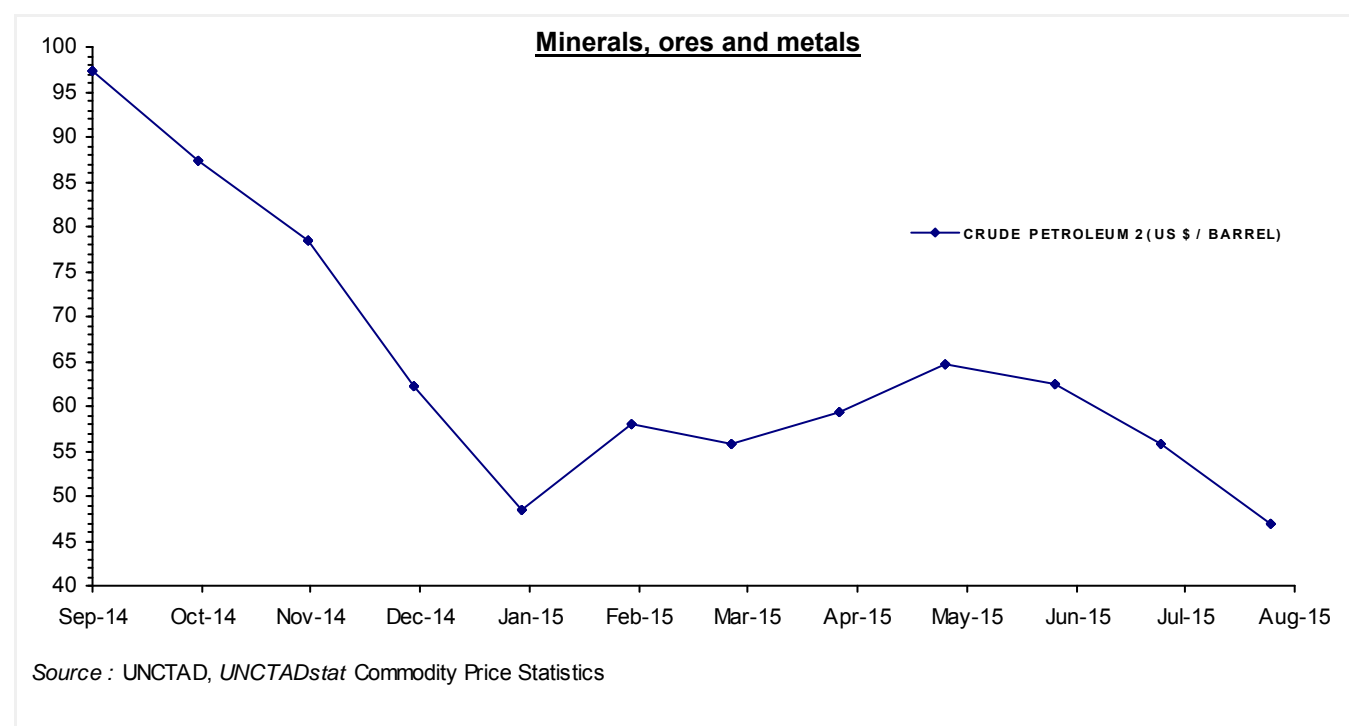
3 - MINERALS, ORES AND METALS

Moving averages		Sep 14	Oct 14	Nov 14	Dec 14	Jan 15	Feb 15	Mar 15	Apr 15	May 15	Jun 15	Jul 15	Aug 15
Sep 13 to Aug 14	Sep 14 to Aug 15												
PHOSPHATE ROCK		K HOURIBGA, 70% BPL, CONTRACT, FAS CASABLANCA										US DOLLARS / TONNE	
110.1	115	115.00	115.00	115.00	115.00	115.00	115.00	115.00	115.00	115.00	115.00	115.00	115.00
MANGANESE ORE INDEX		44% MN, CIF TIANJIN										US DOLLARS / TONNE	
478	367	437	440	435	433	417	376	352	309	302	300	302	304
MANGANESE FLAKE		99.7% ELECTROLYTIC, FREE MARKET, IN WAREHOUSE										US DOLLARS / TONNE	
2242	2032	2378	2327	2276	2137	2113	2068	2045	1989	1788	1815	1780	1667
IRON ORE 1		62% Fe, CHINA IMPORT, SPOT (CFR TIANJIN PORT)										US DOLLARS / DRY TONNE	
116.4	64.73	82.37	80.39	73.59	69.26	67.84	62.81	57.10	51.80	60.82	62.90	52.15	55.73
IRON ORE 2		62% Fe, OFFSHORE EXPORT PRICE AUSTRALIA TO CHINA, CIF										US DOLLARS / DRY TONNE	
117.1	64.87	83.00	81.00	74.00	68.00	68.00	63.00	58.00	52.05	60.21	62.64	52.39	56.19
IRON ORE 3		65% Fe, OFFSHORE EXPORT PRICE BRAZIL TO CHINA, CIF										US DOLLARS / DRY TONNE	
126.6	72.29	92.00	89.00	83.00	76.00	77.00	70.00	64.00	57.30	66.67	69.93	58.83	63.76
ALUMINIUM		LONDON METAL EXCHANGE, HIGH GRADE, CASH										US DOLLARS / TONNE	
1796	1815	1992.1	1937.0	2053.6	1912.9	1808.1	1820.4	1772.3	1816.8	1804.8	1683.2	1637.8	1539.5
COPPER 1		LONDON METAL EXCHANGE, GRADE A, CASH										STERLING POUNDS / TONNE	
4249	3909	4214.1	4193.7	4247.6	4105.7	3838.2	3719.9	3957.8	4032.2	4073.9	3751.4	3507.3	3261.8
COPPER 1 \$		AS ABOVE										US DOLLARS / TONNE	
7017	6075	6874.0	6738.9	6701.9	6419.7	5822.2	5700.7	5930.0	6032.6	6295.8	5840.6	5457.4	5079.9
COPPER 2		US PRODUCER/REFINERY, WIRE BARS, FOB										US CENTS / LB.	
326.5	281.6	314.7	309.1	306.8	294.8	270.8	265.5	276.4	280.8	294.7r	272.8e	255.2e	238.0e
NICKEL 1		LONDON METAL EXCHANGE, CASH										US DOLLARS / TONNE	
16033	14107	18075.8	15765.3	15702.4	15914.3	14766.9	14531.1	13742.2	12779.8	13505.0	12776.6	11380.5	10338.8
NICKEL 2		NEW YORK DEALER, 4X4 CATHODES, ESTIMATED MARKET PRICE										US CENTS / LB.	
736.7	645.3	826.9e	721.2e	718.3e	728.0e	675.5e	664.7e	628.6e	584.6e	617.8e	584.5e	520.6e	472.9e
LEAD 1		LONDON METAL EXCHANGE, CASH SETTLEMENT										STERLING POUNDS / TONNE	
1284	1225	1301.3	1268.2	1282.8	1237.5	1207.3	1177.6	1192.1	1337.2	1296.0	1181.1	1133.4	1085.1
LEAD 1 \$		AS ABOVE										US DOLLARS / TONNE	
2121	1903	2122.7	2037.9	2024.0	1935.0	1831.4	1804.7	1786.2	2000.6	2002.9	1838.8	1763.6	1689.9
LEAD 2		NORTH AMERICA, PRODUCER PRICE										US CENTS / LB.	
117	105.9	118.1e	113.4e	112.6e	107.8e	101.8e	100.4e	99.4e	111.3e	111.5e	102.2e	98.1e	94.2e
ZINC 1		LONDON METAL EXCHANGE, SPECIAL HIGH GRADE, CASH SETTLEMENT										US DOLLARS / TONNE	
2043	2136	2293.7	2272.4	2259.1	2171.4	2110.3	2102.7	2028.6	2206.5	2289.1	2087.1	2001.7	1809.6
ZINC 2		NORTH AMERICA, SPECIAL HIGH GRADE										US CENTS / LB.	
101.7	105.1	113.1	112.0	111.2	107.3	104.4	103.9	100.4	108.4	111.9r	102.0e	97.8e	88.4e
TIN 1		LONDON METAL EXCHANGE, CASH										US DOLLARS / TONNE	
22803	17748	21115	19903	19962	19820	19453	18284	17454	15979	15819	15010	14954	15219

MONTHLY AVERAGE PRICES

3 - MINERALS, ORES AND METALS

Moving averages		Sep 14	Oct 14	Nov 14	Dec 14	Jan 15	Feb 15	Mar 15	Apr 15	May 15	Jun 15	Jul 15	Aug 15
Sep 13 to Aug 14	Sep 14 to Aug 15												
TIN 2		KUALA LUMPUR TIN MARKET, EX-SMELTER										MALAYSIAN DOLLARS / KG.	
73.43	63.25	68.19	65.10	66.69	68.71	69.64	65.75	64.40	58.34	57.13	56.70	56.55	61.78
TIN 2 \$		AS ABOVE										US DOLLARS / TONNE	
22688	17760	21186.9	19901.6	19919.4	19747.1	19444.4	18276.1	17494.3	16053.1	15873.9	15161.2	14873.4	15193.9
TUNGSTEN APT		EUROPEAN FREE MARKET										US DOLLARS / MTU	
376.2	277.5	353.75	344.25	326.88	306.83	291.94	281.00	271.81	254.17	243.06	227.50	222.75	206.44
FERRO-TUNGSTEN		BASIS 75% W, ROTTERDAM, DUTY UNPAID, IN WAREHOUSE										US DOLLARS / KG	
45.02	33.54	40.50	38.93	36.48	34.83	34.25	32.93	33.65	34.31	32.69	29.54	27.72	26.69
GOLD		LONDON, 99.5% FINE, AFTERNOON FIXING										US DOLLARS / TROY OUNCE	
1293	1194	1238.82	1222.49	1176.30	1202.29	1251.85	1227.19	1178.63	1197.91	1199.05	1181.51	1130.04	1117.48
SILVER		HANDY & HARMAN, 99.9% GRADE REFINED, NEW YORK										US CENTS / TROY OUNCE	
2050	1644	1836.88	1716.33	1596.61	1629.48	1723.55	1678.71	1624.00	1634.10	1683.28	1607.46	1505.32	1494.12
CRUDE PETROLEUM 1		UK BRENT, DUBAI & WTI AVERAGE, EQUALLY WEIGHTED, SPOT, FOB										US DOLLARS / BARREL	
104.8	63.01	95.89	86.13	76.96	60.55	47.45	54.93	52.83	57.42	62.50	61.30	54.43	45.72
CRUDE PETROLEUM 2		UK BRENT, LIGHT BLEND 38° API, SPOT PRICE, FOB UK PORTS										US DOLLARS / BARREL	
108.5	64.71	97.34	87.27	78.44	62.16	48.42	57.93	55.79	59.39	64.56	62.35	55.87	46.99
CRUDE PETROLEUM 3		DUBAI, MEDIUM, FATEH 32° API, SPOT PRICE, FOB DUBAI										US DOLLARS / BARREL	
105.6	63.83	96.99	86.72	76.73	60.39	46.34	56.15	54.91	58.67	63.67	61.76	56.27	47.30



SOURCES AND NOTES

Sources:

Bloomberg Terminal Services
Cotton Outlook, Liverpool, UK
Food and Agricultural Organization (FAO), Italy
International Cocoa Organization (ICCO), London, UK
International Coffee Organization (ICO), London, UK
International Grains Council (IGC), London, UK
International Monetary Fund (IMF), Washington D.C., USA
International Rubber Study Group (IRSG), Singapore
International Sugar Organization, London, UK
International Tropical Timber Organization (ITTO), Yokohama, Japan
Metal Bulletin, London, UK
Oil World, Hamburg, Germany
PLATTS, New York, USA
Singapore Commodity Exchange Ltd (SICOM), Singapore
The Public Ledger, London, UK
Thomson Reuters, *Datastream*
United States Department of Agriculture (USDA), Foreign Agriculture Service (FAS)
United States Geological Survey, Commodity Statistics and Information
World Bank, Washington D.C., USA

Explanation of symbols:

- " e " estimated figure
- " r " revised figure
- " .. " not available including no quotation
- " // " break in the series

The current and previous editions of the *Commodity Price Bulletin* are available in the Publications section of the Statistics portal of UNCTAD at <http://www.unctad.org>.

The long time series of annual and monthly commodity prices and prices indices are available in UNCTADstat at <http://unctadstat.unctad/WDS.org> as well as in the *Handbook of Statistics* DVD.

If you have any questions or comments concerning commodity price data, please do not hesitate to contact us:

E-mail: statistics@unctad.org