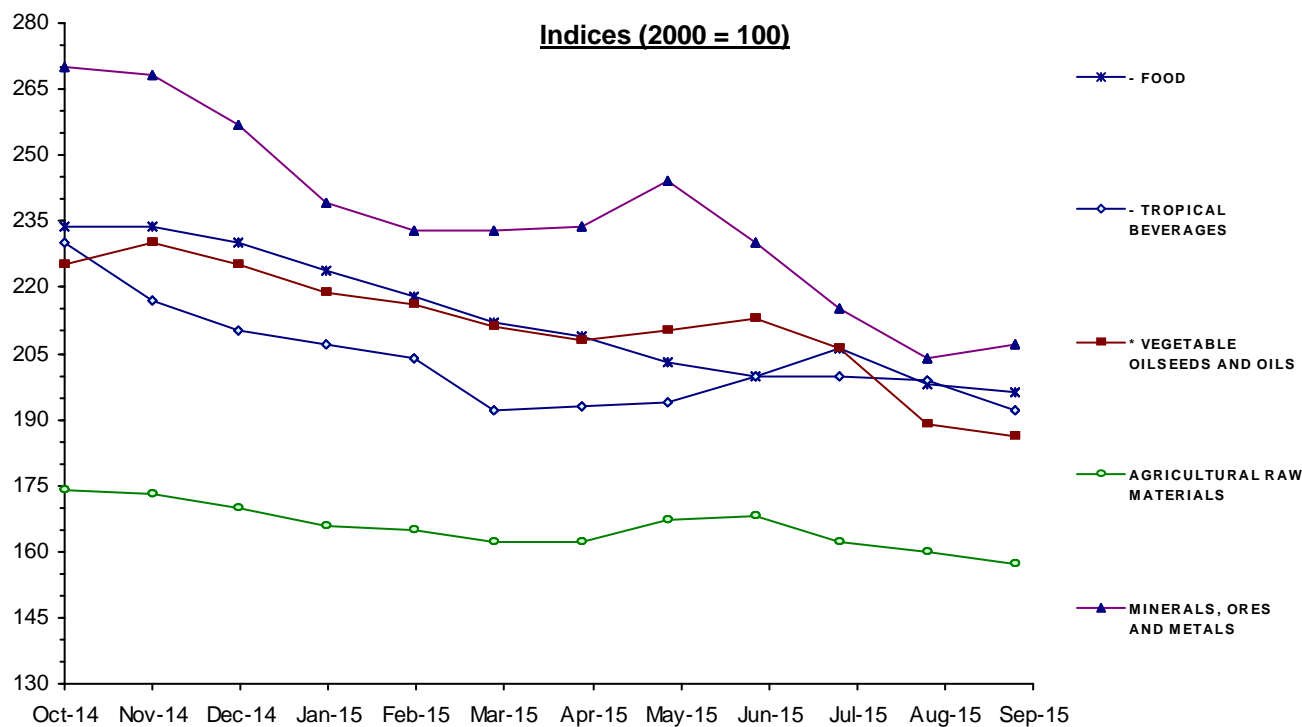


MONTHLY INDICES OF FREE MARKET PRICES IN US DOLLARS

2000 = 100

Moving averages		Oct 14	Nov 14	Dec 14	Jan 15	Feb 15	Mar 15	Apr 15	May 15	Jun 15	Jul 15	Aug 15	Sep 15
Oct 13 to Sep 14	Oct 14 to Sep 15												
ALL FOOD													
241	212	233	232	228	222	216	210	208	203	201	205	197	195
* TROPICAL BEVERAGES AND FOOD													
238	213	234	233	228	222	216	210	207	202	200	205	198	196
- TROPICAL BEVERAGES													
200	203	230	217	210	207	204	192	193	194	200	200	199	192
- FOOD													
242	214	234	234	230	224	218	212	209	203	200	206	198	196
* VEGETABLE OILSEEDS AND OILS													
265	212	225	230	225	219	216	211	208	210	213	206	189	186
AGRICULTURAL RAW MATERIALS													
193	166	174	173	170	166	165	162	162	167	168	162	160	157
MINERALS, ORES AND METALS													
288	236	270	268	257	239	233	233	234	244	230	215	204	207
PRICE INDEX - ALL GROUPS IN CURRENT DOLLARS													
247	212	235	234	228	219	214	210	208	209	204	202	194	193
PRICE INDEX - ALL GROUPS IN SDR'S													
213	198	209	211	207	203	200	200	199	197	192	191	183	181



Source: UNCTAD, UNCTADstat Commodity Price Statistics



MONTHLY AVERAGE PRICES

1 - FOOD, TROPICAL BEVERAGES AND VEGETABLE OILSEEDS AND OILS

Moving averages		Oct 14	Nov 14	Dec 14	Jan 15	Feb 15	Mar 15	Apr 15	May 15	Jun 15	Jul 15	Aug 15	Sep 15
Oct 13 to Sep 14	Oct 14 to Sep 15												
WHEAT 1		ARGENTINA, TRIGO PAN UP RIVER, FOB										US DOLLARS / TONNE	
326	236	239	255	251	253	241	229	227	227	226	230	226	223
WHEAT 2		US, NO. 2, HARD RED WINTER (ORDINARY), FOB GULF										US DOLLARS / TONNE	
310	250	286	282	289	261	250	249	244	233	238	236	216	219
MAIZE 1		ARGENTINA, ROSARIO (UP RIVER), FOB										US DOLLARS / TONNE	
206.3	173.8	169.0	182.0	199.0	185.0	178.0	169.0	168.0	169.0	170.0	176.0	159.0	161.0
MAIZE 2		US, NO. 3 YELLOW, FOB GULF										US DOLLARS / TONNE	
211.4	179.2	183.0	192.0	189.0	181.0	180.0	177.0	177.0	171.0	173.0	185.0	167.0	175.0
RICE		THAILAND, WHITE 5% BROKEN, FOB BANGKOK										US DOLLARS / TONNE	
434	396	433	419	411	410	410	401	392	382	371	388	376r	359
SUGAR		AVERAGE OF I.S.A. DAILY PRICES, FOB & STOWED CARIBBEAN PORTS										US CENTS / LB.	
17.38	13.86	16.75	16.19	15.33	15.34	14.59	13.16	13.08	13.34	12.46	12.77	11.50	11.86
BEEF		AUSTRALIA/NEW ZEALAND, US IMPORT PRICE, FOB ENTRY PORT										US CENTS / LB.	
205.7	220.4	266.9	261.5	239.6	232.0	209.9	207.8	214.4	199.2	195.1	204.4	212.0	202.4
BANANAS		CENTRAL AMERICA/ECUADOR, US IMPORTER'S PRICE, FOB US PORTS										US CENTS / LB.	
42.46	43.25	41.84	41.04	41.19	41.35	43.86	47.44	48.04	42.95	42.15	42.56	43.39	43.17
PEPPER		INDONESIA, MUNTOK, WHITE FAQ EXW ROTTERDAM										US DOLLARS / TONNE	
11851	14329	13613	13700	13967	14400	13748	13927	13600	14753	14682	15500	15255	14800
SOYBEAN MEAL		44/45% PROTEIN, FOB EX-MILL HAMBURG										US DOLLARS / TONNE	
533	403	440	460	453	431	412	392	380	371	372	389	373	362
FISH MEAL		ANY ORIGIN, 64/65% PROTEIN, FREE CARRIER PRICE, BREMEN										US DOLLARS / TONNE	
1660	1636	1770	1836	1890	1790	1717	1638	1539	1525	1506	1466	1469	1480
COFFEE 1		COLOMBIAN MILD ARABICAS, EX-DOCK USA (I.C.A.)										US CENTS / LB.	
178.5	166.3	219.27	203.71	191.53	182.32	171.68	151.94	155.30	148.45	150.58	142.24	144.96	133.03
COFFEE 2		BRAZILIAN AND OTHER NATURAL ARABICAS, EX-DOCK USA (I.C.A.)										US CENTS / LB.	
144.2	137.3	181.58	169.10	157.87	151.21	143.32	127.81	131.63	124.60	120.85	111.92	118.39	109.53
COFFEE 3		OTHER MILD ARABICAS, EX-DOCK USA (I.C.A.)										US CENTS / LB.	
181.0	176.2	227.06	212.93	200.59	190.90	179.94	160.02	164.95	158.45	159.77	153.29	158.78	147.65
COFFEE 4		OTHER MILD ARABICAS, EX-DOCK EU (I.C.A.)										US CENTS / LB.	
178.4	174.2	224.20	207.27	191.70	189.75	177.98	161.18	163.41	158.49	159.75	155.12	155.79	145.16
COFFEE 5		ROBUSTAS, EX-DOCK USA (I.C.A.)										US CENTS / LB.	
101.5	98.87	109.39	106.81	103.51	102.33	103.74	98.07	98.73	94.35	96.89	92.71	91.94	88.00
COFFEE 6		ROBUSTAS, EX-DOCK EU (I.C.A.)										US CENTS / LB.	
94.78	92.19	103.80	102.33	97.76	97.21	97.28	91.04	90.79	86.17	88.98	86.03	84.60	80.31
COFFEE 7		COMPOSITE INDICATOR PRICE 1976 VERSION										US CENTS / LB.	
141.3	137.5	168.23	159.87	152.05	146.62	141.84	129.05	131.84	126.40	128.33	123.00	125.36	117.83

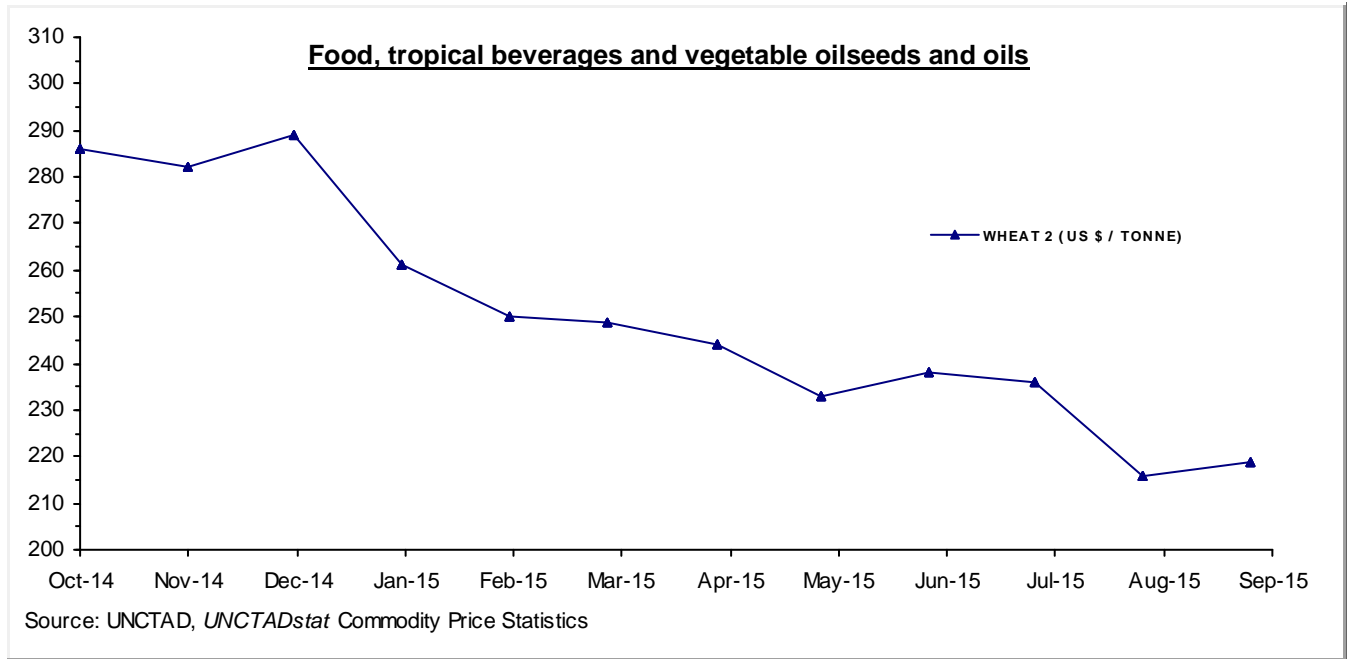
MONTHLY AVERAGE PRICES

1 - FOOD, TROPICAL BEVERAGES AND VEGETABLE OILSEEDS AND OILS

Moving averages		Oct 14	Nov 14	Dec 14	Jan 15	Feb 15	Mar 15	Apr 15	May 15	Jun 15	Jul 15	Aug 15	Sep 15
Oct 13 to Sep 14	Oct 14 to Sep 15												
COFFEE 8		ICO COMPOSITE INDICATOR PRICE											US CENTS / LB.
141	136.1	172.88	162.17	150.66	148.24	141.10	127.04	129.02	123.49	124.97	119.77	121.21	113.10
COCOA		AVERAGE OF DAILY PRICES, NEW YORK/LONDON, 3 MONTHS FUTURES											US CENTS / LB.
112.7	138.6	140.65	131.96	134.16	132.50	133.67	130.74	130.10	140.43	146.92	150.87	143.02	148.71
COCOA SDR		AS ABOVE											SDRs / TONNE
1634	2156	2086.22	1983.45	2030.76	2053.67	2086.24	2080.68	2073.02	2204.41	2305.68	2382.30	2249.75	2331.62
TEA		KENYA, BEST PEKOE FANNINGS 1, MOMBASA AUCTION PRICE											US CENTS / KG.
234.5	311.5	256.2	243.3	243.3	269.6	296.4	307.6	290.7	313.8	355.9	403.0	387.3	371.2
SOYBEANS		US, NO. 2 YELLOW, CIF ROTTERDAM											US DOLLARS / TONNE
521	407	425	449	446	423	407	404	395	389	397	405	381	368
SOYBEAN OIL		DUTCH, FOB EX-MILL											US DOLLARS / TONNE
950	778	836	830	820	799	772	747	749	781	793	751	730	727
SUNFLOWER OIL		EU, FOB, N.W. EUROPEAN PORTS											US DOLLARS / TONNE
929	850	874	892	877	837	803	801	838	904	918	832	812	815
GROUNDNUT OIL		ANY ORIGIN, CIF ROTTERDAM											US DOLLARS / TONNE
1355	1354	1365	1368	1370	1391	1366	1356	1348	1345	1345	1345	1331	1321
COPRA		PHILIPPINES/INDONESIA, CIF N.W. EUROPEAN PORTS											US DOLLARS / TONNE
854	749	769	795	813	764	794	721	714	748	748	735	689	699
COCONUT OIL		PHILIPPINES/INDONESIA, CIF ROTTERDAM											US DOLLARS / TONNE
1278	1129	1150	1194	1217	1155	1188	1096	1080	1133	1131	1100	1037	1063
PALM KERNEL OIL		MALAYSIA/INDONESIA, CIF ROTTERDAM											US DOLLARS / TONNE
1146	941	939	971	968	1019	1077	1043	985	966	919	869	739	798
PALM OIL		INDONESIA/MALAYSIA, 5% FFA, CIF N.W. EUROPEAN PORTS											US DOLLARS / TONNE
867	659	724	731	693	685	688	674	662	659	671	635	549	538
COTTONSEED OIL		UNITED STATES, CRUDE, FOB MISSISSIPPI VALLEY											US DOLLARS / TONNE
1365	1033	1032	904	926	1023	1058	1071	1044	1071	1120	1070	1005	1068

MONTHLY AVERAGE PRICES

1 - FOOD, TROPICAL BEVERAGES AND VEGETABLE OILSEEDS AND OILS



MONTHLY AVERAGE PRICES

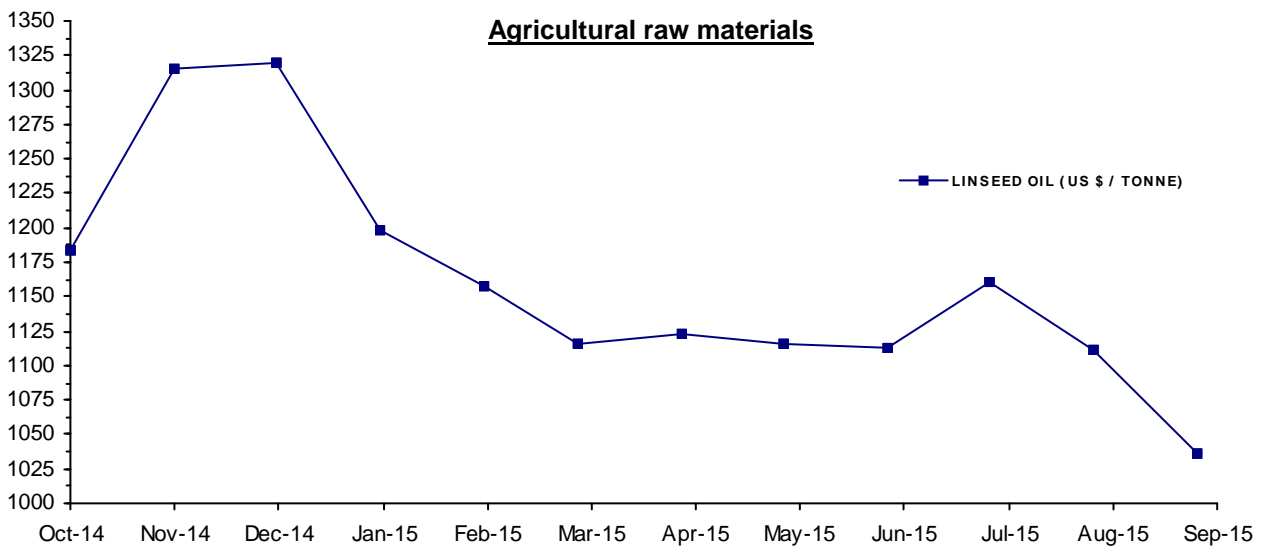
2 - AGRICULTURAL RAW MATERIALS

Moving averages		Oct 14	Nov 14	Dec 14	Jan 15	Feb 15	Mar 15	Apr 15	May 15	Jun 15	Jul 15	Aug 15	Sep 15
Oct 13 to Sep 14	Oct 14 to Sep 15												
LINSEED OIL		ANY ORIGIN, EX-TANK, ROTTERDAM										US DOLLARS / TONNE	
1191	1162	1183	1315	1320	1198	1158	1115	1123	1116	1113	1161	1111	1036
TOBACCO		UNMANUFACTURED, US IMPORT UNIT VALUE										US DOLLARS / TONNE	
4962	4939	4943	4922	4926	4923	4911	4962	4987	5018	4947	4878	4926r	4926e
COTTON 3		US, MEMPHIS EASTERN, MIDD. 1-3/32", CFR FAR EASTERN										US CENTS / LB.	
91.37	73.82	73.85	71.44	71.25	69.63	73.63	72.88	74.85	74.81	75.38	75.85	77.38	74.94
COTTON 4		US, MEMPHIS/ORLEANS/TEXAS, MIDD.1", CFR FAR EASTERN										US CENTS / LB.	
90.96	73.16	73.40	70.69	70.50	68.94	73.13	72.13	74.20	74.50	74.63	75.10	76.75	73.94
COTTON 6		INDEX A (M 1-3/32"), COTTON OUTLOOK, LIVERPOOL										US CENTS / LB.	
87.1	70.21	70.34	67.53	68.30	67.35	69.84	69.35	71.70	72.86	72.35	72.35	71.82	68.74
WOOL 1		AUSTRALIAN FINE WOOL 19 MICRON										US DOLLARS / TONNE	
11159	10141	10440.1	10419.7	10021.3	9670.3	9469.1	9294.5	9867.6	11145.8	11378.0	10096.5	10226.8	9667.5
WOOL 2		AUSTRALIAN COARSE WOOL 23 MICRON										US DOLLARS / TONNE	
10802	9367	9589.3	9684.3	9356.2	8993.9	8924.4	8711.6	8831.4	9763.4	10285.7	9443.5	9792.8	9025.1
JUTE		BANGLADESH, BWD, FOB MONGLA										US DOLLARS / TONNE	
610	708	720	700	710	730	760	750	720	710	680	660	680	680e
SISAL 1		TANZANIA/KENYA, NO.2 & 3 LONG, CIF MAIN EUROPEAN PORTS										US DOLLARS / TONNE	
1612	2013	1850	1880	1905	1935	1950	1975	2050	2050	2090	2120	2175	2175e
SISAL 2		TANZANIA/KENYA, NO.3 & UG, CIF MAIN EUROPEAN PORTS										US DOLLARS / TONNE	
1503	1900	1750	1780	1805	1835	1850	1875	1925	1925	1965	1995	2050	2050e
CATTLE HIDES		CHICAGO, PACKER'S HEAVY NATIVE STEERS, FOB										US CENTS / LB.	
108	98	114	115	109	107	106	105	100	96	94	83	71	75
NON-CONIFEROUS WOODS		UK, IMPORT PRICE INDEX (DOLLAR EQUIVALENT)										INDEX 2010=100	
102.7	95.4	102.8	101.4	100.9	98.2	96.7	95.6	93.9	92.2	92.2	91.2	89.6r	89.7
TROPICAL LOGS 1		SAPELE, LM, FOB UK IMPORT PRICE										US DOLLARS / CUBIC METER	
475	402	443.5	436.6	431.2	407.6	397.5	379.2	377.8	390.8	392.5	385.1	389.8	393.0
TROPICAL LOGS 2		OKOUME (60% CI, 40% CE, 20% CS), FOB										US DOLLARS / CUBIC METER	
447.7	324.3	431.0	424.1	418.6	380.8	363.2	308.1	258.7	267.6	269.2	261.1	261.8	246.9
TROPICAL SAWNWOOD		MALAYSIA, DARK RED MERANTI, SEL/BTR, CFR PLUS COMMISSION UK										£ / CUBIC METER	
545.1	545	545.0	545.0	545.0	545.0	545.0	545.0	544.2	545.1	544.5	545.0	545.8	545.9
PLYWOOD		AFRICA/SOUTHEAST ASIA, LAUAN, WHOLESALE PRICE, SPOT TOKYO										US CENTS / SHEET	
533.8	458.2	505.60	469.80	457.45	461.30	460.18	453.60	456.80	452.10	441.29	442.54	443.30	454.48

MONTHLY AVERAGE PRICES

2 - AGRICULTURAL RAW MATERIALS

Moving averages		Oct 14	Nov 14	Dec 14	Jan 15	Feb 15	Mar 15	Apr 15	May 15	Jun 15	Jul 15	Aug 15	Sep 15
Oct 13 to Sep 14	Oct 14 to Sep 15												
PLYWOOD CM		AS ABOVE										US DOLLARS / CUBIC METER	
805.8	691.7	763.19	709.15	690.51	696.32	694.63	684.70	689.53	682.44	666.12	668.01	669.15	686.02
RUBBER 1		RSS 3, MONTHLY AVERAGE OF WEIGHTED DAILY FUTURE PRICES										US CENTS / KG	
218.4	165	162.0	163.7	160.3	165.4	180.8	173.5	170.0	184.2	182.9	164.0	142.1	131.2
RUBBER 2		TSR20 NEW YORK CIF										US DOLLARS / TONNE	
2157	1696	1765.60	1790.00	1734.00	1697.30	1686.80	1663.50	1643.90	1776.80	1817.00	1700.60	1588.00	1488.00



Source: UNCTAD, *UNCTADstat* Commodity Price Statistics

MONTHLY AVERAGE PRICES

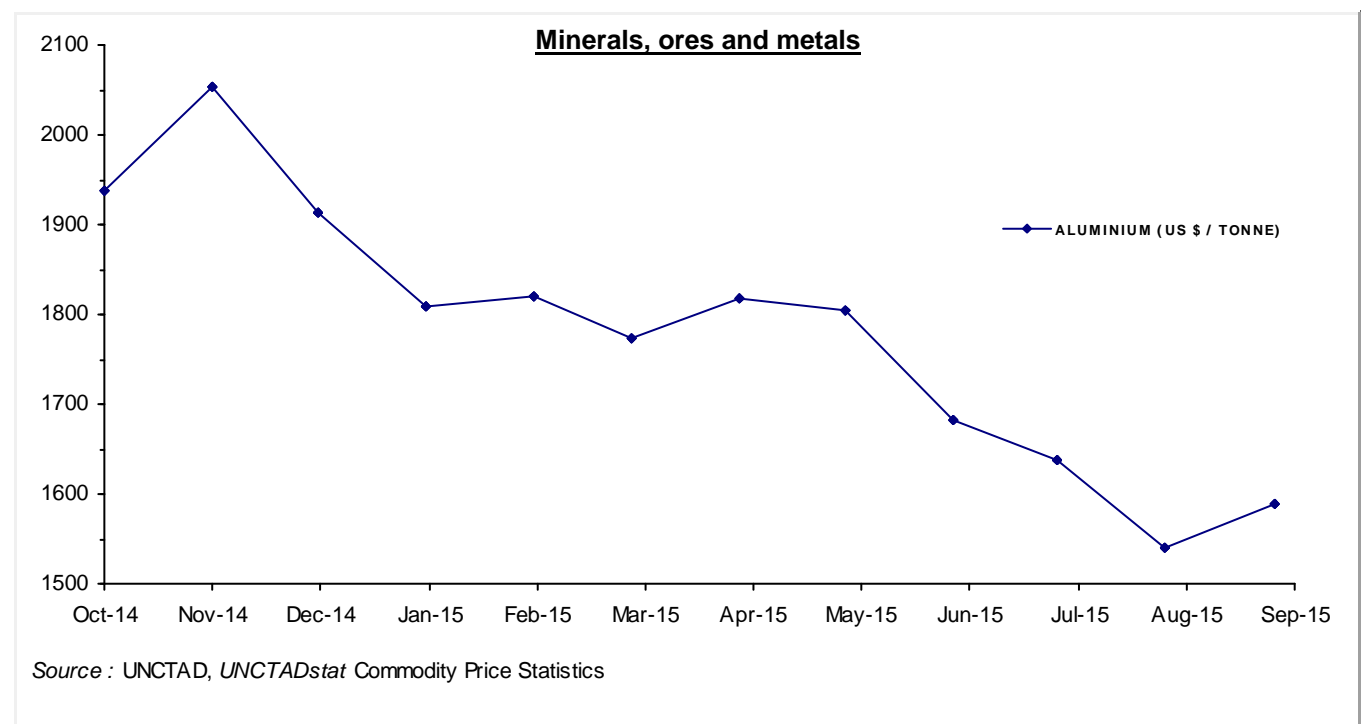
3 - MINERALS, ORES AND METALS

Moving averages		Oct 14	Nov 14	Dec 14	Jan 15	Feb 15	Mar 15	Apr 15	May 15	Jun 15	Jul 15	Aug 15	Sep 15
Oct 13 to Sep 14	Oct 14 to Sep 15												
PHOSPHATE ROCK		K HOURIBGA, 70% BPL, CONTRACT, FAS CASABLANCA										US DOLLARS / TONNE	
109.0	115.5	115.00	115.00	115.00	115.00	115.00	115.00	115.00	115.00	115.00	115.00	115.00	121.00
MANGANESE ORE INDEX		44% MN, CIF TIANJIN										US DOLLARS / TONNE	
472	355	440	435	433	417	376	352	309	302	300	302	304	293
MANGANESE FLAKE		99.7% ELECTROLYTIC, FREE MARKET, IN WAREHOUSE										US DOLLARS / TONNE	
2255	1969	2327	2276	2137	2113	2068	2045	1989	1788	1815	1780	1667	1627
IRON ORE 1		62% Fe, CHINA IMPORT, SPOT (CFR TIANJIN PORT)										US DOLLARS / DRY TONNE	
112.1	62.62	80.39	73.59	69.26	67.84	62.81	57.10	51.80	60.82	62.90	52.15	55.73	57.02
IRON ORE 2		62% Fe, OFFSHORE EXPORT PRICE AUSTRALIA TO CHINA, CIF										US DOLLARS / DRY TONNE	
112.7	62.69	81.00	74.00	68.00	68.00	63.00	58.00	52.05	60.21	62.64	52.39	56.19	56.82
IRON ORE 3		65% Fe, OFFSHORE EXPORT PRICE BRAZIL TO CHINA, CIF										US DOLLARS / DRY TONNE	
122.2	69.86	89.00	83.00	76.00	77.00	70.00	64.00	57.30	66.67	69.93	58.83	63.76	62.89
ALUMINIUM		LONDON METAL EXCHANGE, HIGH GRADE, CASH										US DOLLARS / TONNE	
1815	1781	1937.0	2053.6	1912.9	1808.1	1820.4	1772.3	1816.8	1804.8	1683.2	1637.8	1539.5	1588.5
COPPER 1		LONDON METAL EXCHANGE, GRADE A, CASH										STERLING POUNDS / TONNE	
4223	3840	4193.7	4247.6	4105.7	3838.2	3719.9	3957.8	4032.2	4073.9	3751.4	3507.3	3261.8	3394.4
COPPER 1 \$		AS ABOVE										US DOLLARS / TONNE	
6993	5935	6738.9	6701.9	6419.7	5822.2	5700.7	5930.0	6032.6	6295.8	5840.6	5457.4	5079.9	5202.9
COPPER 2		US PRODUCER/REFINERY, WIRE BARS, FOB										US CENTS / LB.	
325	275.1	309.1	306.8	294.8	270.8	265.5	276.4	280.8	294.7r	272.5r	254.9e	237.7e	237.7e
NICKEL 1		LONDON METAL EXCHANGE, CASH										US DOLLARS / TONNE	
16391	13425	15765.3	15702.4	15914.3	14766.9	14531.1	13742.2	12779.8	13505.0	12776.6	11380.5	10338.8	9895.5
NICKEL 2		NEW YORK DEALER, 4X4 CATHODES, ESTIMATED MARKET PRICE										US CENTS / LB.	
751.9	614.1	721.2e	718.3e	728.0e	675.5e	664.7e	628.6e	584.6e	617.8e	584.5e	520.6e	472.9e	452.7
LEAD 1		LONDON METAL EXCHANGE, CASH SETTLEMENT										STERLING POUNDS / TONNE	
1282	1208	1268.2	1282.8	1237.5	1207.3	1177.6	1192.1	1337.2	1296.0	1181.1	1133.4	1085.1	1096.4
LEAD 1 \$		AS ABOVE										US DOLLARS / TONNE	
2124	1866	2037.9	2024.0	1935.0	1831.4	1804.7	1786.2	2000.6	2002.9	1838.8	1763.6	1689.9	1680.6
LEAD 2		NORTH AMERICA, PRODUCER PRICE										US CENTS / LB.	
117.1	103.9	113.4e	112.6e	107.8e	101.8e	100.4e	99.4e	111.3e	111.5e	102.2e	98.1e	94.2e	93.6e
ZINC 1		LONDON METAL EXCHANGE, SPECIAL HIGH GRADE, CASH SETTLEMENT										US DOLLARS / TONNE	
2080	2088	2272.4	2259.1	2171.4	2110.3	2102.7	2028.6	2206.5	2289.1	2087.1	2001.7	1809.6	1718.6
ZINC 2		NORTH AMERICA, SPECIAL HIGH GRADE										US CENTS / LB.	
103.4	102.7	112.0	111.2	107.3	104.4	103.9	100.4	108.4	111.9r	102.0e	97.8e	88.4e	84.3e
TIN 1		LONDON METAL EXCHANGE, CASH										US DOLLARS / TONNE	
22668	17277	19903	19962	19820	19453	18284	17454	15979	15819	15010	14954	15219	15469

MONTHLY AVERAGE PRICES

3 - MINERALS, ORES AND METALS

Moving averages		Oct 14	Nov 14	Dec 14	Jan 15	Feb 15	Mar 15	Apr 15	May 15	Jun 15	Jul 15	Aug 15	Sep 15
Oct 13 to Sep 14	Oct 14 to Sep 15												
TIN 2		KUALA LUMPUR TIN MARKET, EX-SMELTER										MALAYSIAN DOLLARS / KG.	
72.98	63	65.10	66.69	68.71	69.64	65.75	64.40	58.34	57.13	56.70	56.55	61.78	65.16
TIN 2 \$		AS ABOVE										US DOLLARS / TONNE	
22566	17255	19901.6	19919.4	19747.1	19444.4	18276.1	17494.3	16053.1	15873.9	15161.2	14873.4	15193.9	15116.2
TUNGSTEN APT		EUROPEAN FREE MARKET										US DOLLARS / MTU	
371.8	263.8	344.25	326.88	306.83	291.94	281.00	271.81	254.17	243.06	227.50	222.75	206.44	188.61
FERRO-TUNGSTEN		BASIS 75% W, ROTTERDAM, DUTY UNPAID, IN WAREHOUSE										US DOLLARS / KG	
44.33	32.23	38.93	36.48	34.83	34.25	32.93	33.65	34.31	32.69	29.54	27.72	26.69	24.78
GOLD		LONDON, 99.5% FINE, AFTERNOON FIXING										US DOLLARS / TROY OUNCE	
1284	1184	1222.49	1176.30	1202.29	1251.85	1227.19	1178.63	1197.91	1199.05	1181.51	1130.04	1117.48	1124.53
SILVER		HANDY & HARMAN, 99.9% GRADE REFINED, NEW YORK										US CENTS / TROY OUNCE	
2016	1614	1716.33	1596.61	1629.48	1723.55	1678.71	1624.00	1634.10	1683.28	1607.46	1505.32	1494.12	1478.62
CRUDE PETROLEUM 1		UK BRENT, DUBAI & WTI AVERAGE, EQUALLY WEIGHTED, SPOT, FOB										US DOLLARS / BARREL	
103.7	58.88	86.13	76.96	60.55	47.45	54.93	52.83	57.42	62.50	61.30	54.43	45.72	46.29
CRUDE PETROLEUM 2		UK BRENT, LIGHT BLEND 38° API, SPOT PRICE, FOB UK PORTS										US DOLLARS / BARREL	
107.3	60.53	87.27	78.44	62.16	48.42	57.93	55.79	59.39	64.56	62.35	55.87	46.99	47.23
CRUDE PETROLEUM 3		DUBAI, MEDIUM, FATEH 32° API, SPOT PRICE, FOB DUBAI										US DOLLARS / BARREL	
104.7	59.59	86.72	76.73	60.39	46.34	56.15	54.91	58.67	63.67	61.76	56.27	47.30	46.14



SOURCES AND NOTES

Sources:

Bloomberg Terminal Services
Cotton Outlook, Liverpool, UK
Food and Agricultural Organization (FAO), Italy
International Cocoa Organization (ICCO), London, UK
International Coffee Organization (ICO), London, UK
International Grains Council (IGC), London, UK
International Monetary Fund (IMF), Washington D.C., USA
International Rubber Study Group (IRSG), Singapore
International Sugar Organization, London, UK
International Tropical Timber Organization (ITTO), Yokohama, Japan
Metal Bulletin, London, UK
Oil World, Hamburg, Germany
PLATTS, New York, USA
Singapore Commodity Exchange Ltd (SICOM), Singapore
The Public Ledger, London, UK
Thomson Reuters, *Datastream*
United States Department of Agriculture (USDA), Foreign Agriculture Service (FAS)
United States Geological Survey, Commodity Statistics and Information
World Bank, Washington D.C., USA

Explanation of symbols:

- " e " estimated figure
- " r " revised figure
- " .. " not available including no quotation
- " // " break in the series

The current and previous editions of the *Commodity Price Bulletin* are available in the Publications section of the Statistics portal of UNCTAD at <http://www.unctad.org>.

The long time series of annual and monthly commodity prices and prices indices are available in UNCTADstat at <http://unctadstat.unctad/WDS.org> as well as in the *Handbook of Statistics* DVD.

If you have any questions or comments concerning commodity price data, please do not hesitate to contact us:

E-mail: statistics@unctad.org