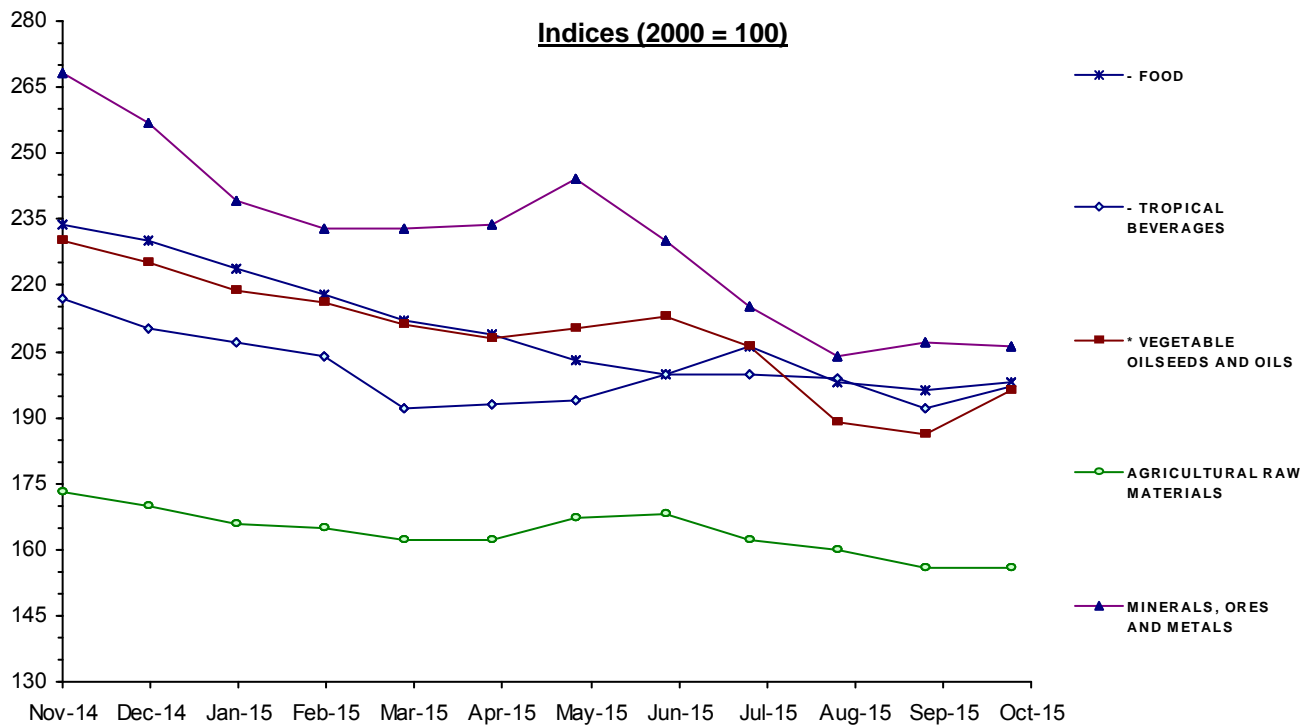


MONTHLY INDICES OF FREE MARKET PRICES IN US DOLLARS

2000 = 100

Moving averages		Nov 14	Dec 14	Jan 15	Feb 15	Mar 15	Apr 15	May 15	Jun 15	Jul 15	Aug 15	Sep 15	Oct 15
Nov 13 to Oct 14	Nov 14 to Oct 15												
ALL FOOD													
240	210	232	228	222	216	210	208	203	201	205	197	195	198
* TROPICAL BEVERAGES AND FOOD													
238	210	233	228	222	216	210	207	202	200	205	198	196	198
- TROPICAL BEVERAGES													
206	200	217	210	207	204	192	193	194	200	200	199	192	197
- FOOD													
241	211	234	230	224	218	212	209	203	200	206	198	196	198
* VEGETABLE OILSEEDS AND OILS													
262	209	230	225	219	216	211	208	210	213	206	189	186	196
AGRICULTURAL RAW MATERIALS													
191	164	173	170	166	165	162	162	167	168	162	160	157	156
MINERALS, ORES AND METALS													
286	231	268	257	239	233	233	234	244	230	215	204	207	206
PRICE INDEX - ALL GROUPS IN CURRENT DOLLARS													
246	209	234	228	219	214	210	208	209	204	202	194	193	194
PRICE INDEX - ALL GROUPS IN SDR'S													
212	196	211	207	203	200	200	199	197	192	191	183	181	183



Source: UNCTAD, UNCTADstat Commodity Price Statistics



MONTHLY AVERAGE PRICES

1 - FOOD, TROPICAL BEVERAGES AND VEGETABLE OILSEEDS AND OILS

Moving averages		Nov 14	Dec 14	Jan 15	Feb 15	Mar 15	Apr 15	May 15	Jun 15	Jul 15	Aug 15	Sep 15	Oct 15
Nov 13 to Oct 14	Nov 14 to Oct 15												
WHEAT 1		ARGENTINA, TRIGO PAN UP RIVER, FOB										US DOLLARS / TONNE	
317	234	255	251	253	241	229	227	227	226	230	226	223	223
WHEAT 2		US, NO. 2, HARD RED WINTER (ORDINARY), FOB GULF										US DOLLARS / TONNE	
306	245	282	289	261	250	249	244	233	238	236	216	219	218
MAIZE 1		ARGENTINA, ROSARIO (UP RIVER), FOB										US DOLLARS / TONNE	
203	173.3	182.0	199.0	185.0	178.0	169.0	168.0	169.0	170.0	176.0	159.0	161.0	163.0
MAIZE 2		US, NO. 3 YELLOW, FOB GULF										US DOLLARS / TONNE	
209	178.8	192.0	189.0	181.0	180.0	177.0	177.0	171.0	173.0	185.0	167.0	175.0	179.0
RICE		THAILAND, WHITE 5% BROKEN, FOB BANGKOK										US DOLLARS / TONNE	
432	390	419	411	410	410	401	392	382	371	388	376	359	360
SUGAR		AVERAGE OF I.S.A. DAILY PRICES, FOB & STOWED CARIBBEAN PORTS										US CENTS / LB.	
17.22	13.63	16.19	15.33	15.34	14.59	13.16	13.08	13.34	12.46	12.77	11.50	11.86	13.91
BEEF		AUSTRALIA/NEW ZEALAND, US IMPORT PRICE, FOB ENTRY PORT										US CENTS / LB.	
213.1	213.6	261.5	239.6	232.0	209.9	207.8	214.4	199.2	195.1	204.4	212.0	202.4	184.6
BANANAS		CENTRAL AMERICA/ECUADOR, US IMPORTER'S PRICE, FOB US PORTS										US CENTS / LB.	
42.4	43.29	41.04	41.19	41.35	43.86	47.44	48.04	42.95	42.15	42.56	43.39	43.17	42.35
PEPPER		INDONESIA, MUNTOK, WHITE FAQ EXW ROTTERDAM										US DOLLARS / TONNE	
12159	14389	13700	13967	14400	13748	13927	13600	14753	14682	15500	15255	14800	14336
SOYBEAN MEAL		44/45% PROTEIN, FOB EX-MILL HAMBURG										US DOLLARS / TONNE	
523	396	460	453	431	412	392	380	371	372	389	373	362	351
FISH MEAL		ANY ORIGIN, 64/65% PROTEIN, FREE CARRIER PRICE, BREMEN										US DOLLARS / TONNE	
1671	1616	1836	1890	1790	1717	1638	1539	1525	1506	1466	1469	1480	1531
COFFEE 1		COLOMBIAN MILD ARABICAS, EX-DOCK USA (I.C.A.)										US CENTS / LB.	
186	159.7	203.71	191.53	182.32	171.68	151.94	155.30	148.45	150.58	142.24	144.96	133.03	140.28
COFFEE 2		BRAZILIAN AND OTHER NATURAL ARABICAS, EX-DOCK USA (I.C.A.)										US CENTS / LB.	
150.7	131.9	169.10	157.87	151.21	143.32	127.81	131.63	124.60	120.85	111.92	118.39	109.53	116.83
COFFEE 3		OTHER MILD ARABICAS, EX-DOCK USA (I.C.A.)										US CENTS / LB.	
189.2	170.1	212.93	200.59	190.90	179.94	160.02	164.95	158.45	159.77	153.29	158.78	147.65	153.88
COFFEE 4		OTHER MILD ARABICAS, EX-DOCK EU (I.C.A.)										US CENTS / LB.	
186.3	168.2	207.27	191.70	189.75	177.98	161.18	163.41	158.49	159.75	155.12	155.79	145.16	152.81
COFFEE 5		ROBUSTAS, EX-DOCK USA (I.C.A.)										US CENTS / LB.	
103.2	97.15	106.81	103.51	102.33	103.74	98.07	98.73	94.35	96.89	92.71	91.94	88.00	88.67
COFFEE 6		ROBUSTAS, EX-DOCK EU (I.C.A.)										US CENTS / LB.	
96.56	90.34	102.33	97.76	97.21	97.28	91.04	90.79	86.17	88.98	86.03	84.60	80.31	81.57
COFFEE 7		COMPOSITE INDICATOR PRICE 1976 VERSION										US CENTS / LB.	
146.2	133.6	159.87	152.05	146.62	141.84	129.05	131.84	126.40	128.33	123.00	125.36	117.83	121.28

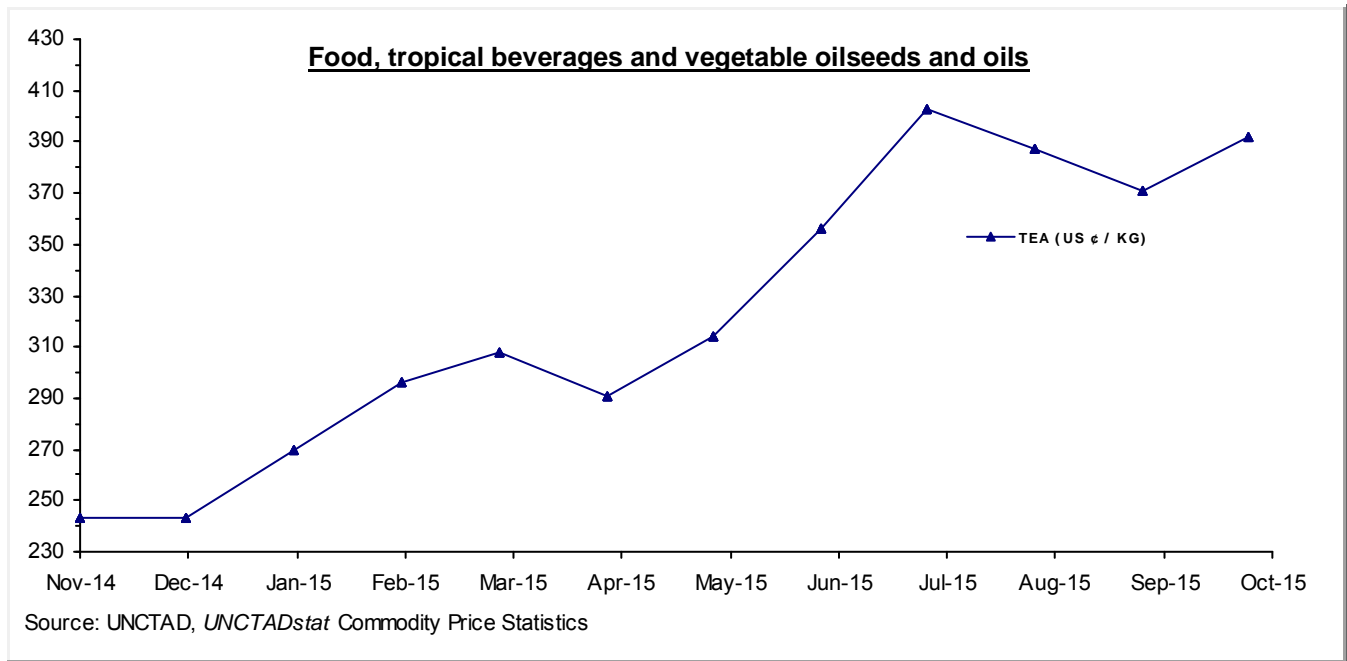
MONTHLY AVERAGE PRICES

1 - FOOD, TROPICAL BEVERAGES AND VEGETABLE OILSEEDS AND OILS

Moving averages		Nov 14	Dec 14	Jan 15	Feb 15	Mar 15	Apr 15	May 15	Jun 15	Jul 15	Aug 15	Sep 15	Oct 15
Nov 13 to Oct 14	Nov 14 to Oct 15												
COFFEE 8		ICO COMPOSITE INDICATOR PRICE											
		US CENTS / LB.											
146.5	131.6	162.17	150.66	148.24	141.10	127.04	129.02	123.49	124.97	119.77	121.21	113.10	118.43
COCOA		AVERAGE OF DAILY PRICES, NEW YORK/LONDON, 3 MONTHS FUTURES											
		US CENTS / LB.											
112.7	139.0	131.96	134.16	132.50	133.67	130.74	130.10	140.43	146.92	150.87	143.02	148.71	145.07
COCOA SDR		AS ABOVE											
		SDRs / TONNE											
1634	2171	1983.45	2030.76	2053.67	2086.24	2080.68	2073.02	2204.41	2305.68	2382.30	2249.75	2331.62	2274.31
TEA		KENYA, BEST PEKOE FANNINGS 1, MOMBASA AUCTION PRICE											
		US CENTS / KG.											
237.4	322.8	243.3	243.3	269.6	296.4	307.6	290.7	313.8	355.9	403.0	387.3	371.2	391.8
SOYBEANS		US, NO. 2 YELLOW, CIF ROTTERDAM											
		US DOLLARS / TONNE											
511	403	449	446	423	407	404	395	389	397	405	381	368	376
SOYBEAN OIL		DUTCH, FOB EX-MILL											
		US DOLLARS / TONNE											
937	770	830	820	799	772	747	749	781	793	751	730	727	742
SUNFLOWER OIL		EU, FOB, N.W. EUROPEAN PORTS											
		US DOLLARS / TONNE											
919	851	892	877	837	803	801	838	904	918	832	812	815	883
GROUNDNUT OIL		ANY ORIGIN, CIF ROTTERDAM											
		US DOLLARS / TONNE											
1338	1350	1368	1370	1391	1366	1356	1348	1345	1345	1345	1331	1321	1314
COPRA		PHILIPPINES/INDONESIA, CIF N.W. EUROPEAN PORTS											
		US DOLLARS / TONNE											
863	746	795	813	764	794	721	714	748	748	735	689	699	736
COCONUT OIL		PHILIPPINES/INDONESIA, CIF ROTTERDAM											
		US DOLLARS / TONNE											
1292	1125	1194	1217	1155	1188	1096	1080	1133	1131	1100	1037	1063	1108
PALM KERNEL OIL		MALAYSIA/INDONESIA, CIF ROTTERDAM											
		US DOLLARS / TONNE											
1148	934	971	968	1019	1077	1043	985	966	919	869	739	798	860
PALM OIL		INDONESIA/MALAYSIA, 5% FFA, CIF N.W. EUROPEAN PORTS											
		US DOLLARS / TONNE											
855	647	731	693	685	688	674	662	659	671	635	549	538	583
COTTONSEED OIL		UNITED STATES, CRUDE, FOB MISSISSIPPI VALLEY											
		US DOLLARS / TONNE											
1372	1036	904	926	1023	1058	1071	1044	1071	1120	1070	1005	1068	1071

MONTHLY AVERAGE PRICES

1 - FOOD, TROPICAL BEVERAGES AND VEGETABLE OILSEEDS AND OILS



MONTHLY AVERAGE PRICES

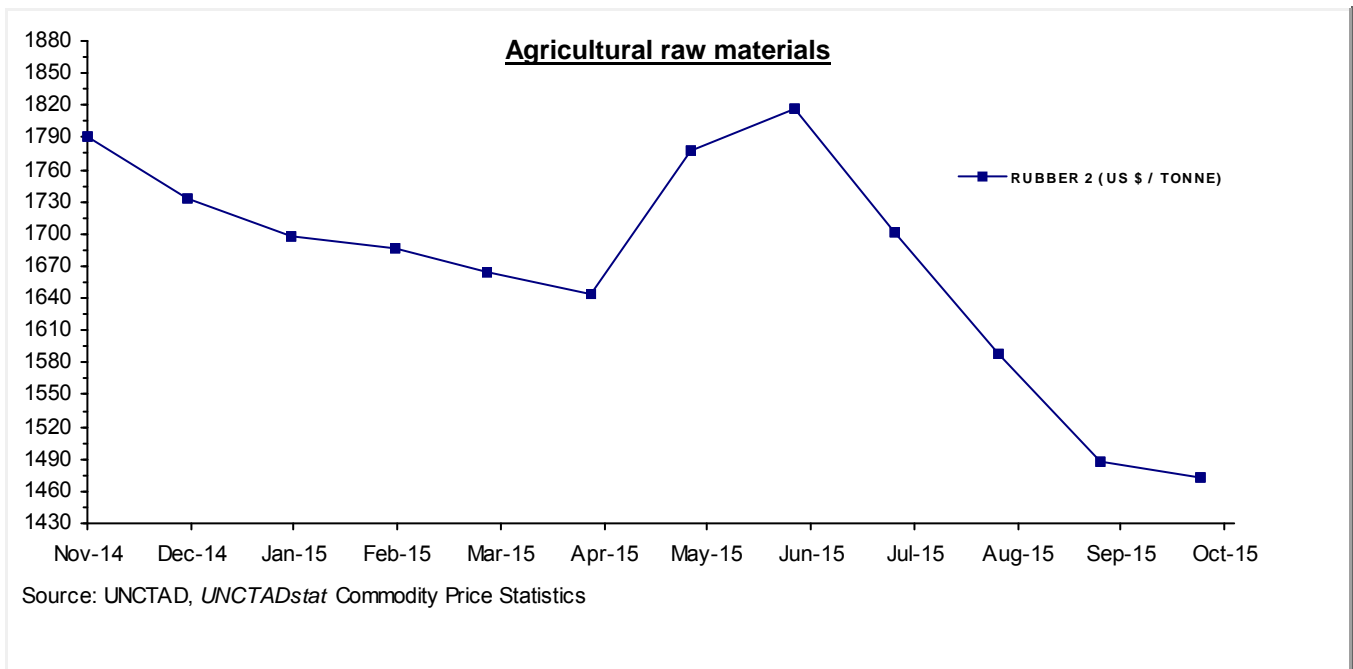
2 - AGRICULTURAL RAW MATERIALS

Moving averages		Nov 14	Dec 14	Jan 15	Feb 15	Mar 15	Apr 15	May 15	Jun 15	Jul 15	Aug 15	Sep 15	Oct 15
Nov 13 to Oct 14	Nov 14 to Oct 15												
LINSEED OIL		ANY ORIGIN, EX-TANK, ROTTERDAM										US DOLLARS / TONNE	
1193	1140	1315	1320	1198	1158	1115	1123	1116	1113	1161	1111	1036	917
TOBACCO		UNMANUFACTURED, US IMPORT UNIT VALUE										US DOLLARS / TONNE	
4976	4931	4922	4926	4923	4911	4962	4987	5018	4947	4878	4926	4887r	4887e
COTTON 3		US, MEMPHIS EASTERN, MIDD. 1-3/32", CFR FAR EASTERN										US CENTS / LB.	
89.69	74	71.44	71.25	69.63	73.63	72.88	74.85	74.81	75.38	75.85	77.38	74.94	75.95
COTTON 4		US, MEMPHIS/ORLEANS/TEXAS, MIDD.1", CFR FAR EASTERN										US CENTS / LB.	
89.3	73.23	70.69	70.50	68.94	73.13	72.13	74.20	74.50	74.63	75.10	76.75	73.94	74.30
COTTON 6		INDEX A (M 1-3/32"), COTTON OUTLOOK, LIVERPOOL										US CENTS / LB.	
85.52	70.1	67.53	68.30	67.35	69.84	69.35	71.70	72.86	72.35	72.35	71.82	68.74	69.03
WOOL 1		AUSTRALIAN FINE WOOL 19 MICRON										US DOLLARS / TONNE	
11030	10068	10419.7	10021.3	9670.3	9469.1	9294.5	9867.6	11145.8	11378.0	10096.5	10226.8	9667.5	9560.6
WOOL 2		AUSTRALIAN COARSE WOOL 23 MICRON										US DOLLARS / TONNE	
10630	9305	9684.3	9356.2	8993.9	8924.4	8711.6	8831.4	9763.4	10285.7	9443.5	9792.8	9025.1	8848.8
JUTE		BANGLADESH, BWD, FOB MONGLA										US DOLLARS / TONNE	
620	705	700	710	730	760	750	720	710	680	660	680	720r	740
SISAL 1		TANZANIA/KENYA, NO.2 & 3 LONG, CIF MAIN EUROPEAN PORTS										US DOLLARS / TONNE	
1641	2040	1880	1905	1935	1950	1975	2050	2050	2090	2120	2175	2275r	2300
SISAL 2		TANZANIA/KENYA, NO.3 & UG, CIF MAIN EUROPEAN PORTS										US DOLLARS / TONNE	
1532	1925	1780	1805	1835	1850	1875	1925	1925	1965	1995	2050	2150r	2175
CATTLE HIDES		CHICAGO, PACKER'S HEAVY NATIVE STEERS, FOB										US CENTS / LB.	
109	95	115	109	107	106	105	100	96	94	83	71	75	75
NON-CONIFEROUS WOODS		UK, IMPORT PRICE INDEX (DOLLAR EQUIVALENT)										INDEX 2010=100	
102.8	94.2	101.4	100.9	98.2	96.7	95.6	93.9	92.2	92.2	91.2	89.6	89.7	88.6
TROPICAL LOGS 1		SAPELE, LM, FOB UK IMPORT PRICE										US DOLLARS / CUBIC METER	
472.2	397.9	436.6	431.2	407.6	397.5	379.2	377.8	390.8	392.5	385.1	389.8	393.0	393.3
TROPICAL LOGS 2		OKOUME (60% CI, 40% CE, 20% CS), FOB										US DOLLARS / CUBIC METER	
450.4	308.5	424.1	418.6	380.8	363.2	308.1	258.7	267.6	269.2	261.1	261.8	246.9	241.5
TROPICAL SAWNWOOD		MALAYSIA, DARK RED MERANTI, SEL/BTR, CFR PLUS COMMISSION UK										£ / CUBIC METER	
545.1	545	545.0	545.0	545.0	545.0	545.0	544.2	545.1	544.5	545.0	545.8	545.9	544.9
PLYWOOD		AFRICA/SOUTHEAST ASIA, LAUAN, WHOLESALE PRICE, SPOT TOKYO										US CENTS / SHEET	
529.4	454	469.80	457.45	461.30	460.18	453.60	456.80	452.10	441.29	442.54	443.30	454.48	455.00
PLYWOOD CM		AS ABOVE										US DOLLARS / CUBIC METER	
799.2	685.3	709.15	690.51	696.32	694.63	684.70	689.53	682.44	666.12	668.01	669.15	686.02	686.81

MONTHLY AVERAGE PRICES

2 - AGRICULTURAL RAW MATERIALS

<u>Moving averages</u>		Nov 14	Dec 14	Jan 15	Feb 15	Mar 15	Apr 15	May 15	Jun 15	Jul 15	Aug 15	Sep 15	Oct 15
Nov 13 to Oct 14	Nov 14 to Oct 15												
RUBBER 1		RSS 3, MONTHLY AVERAGE OF WEIGHTED DAILY FUTURE PRICES										US CENTS / KG	
210.7	162.3	163.7	160.3	165.4	180.8	173.5	170.0	184.2	182.9	164.0	142.1	131.2	130.1
RUBBER 2		TSR20 NEW YORK CIF										US DOLLARS / TONNE	
2091	1672	1790.00	1734.00	1697.30	1686.80	1663.50	1643.90	1776.80	1817.00	1700.60	1588.00	1488.00	1473.40



MONTHLY AVERAGE PRICES

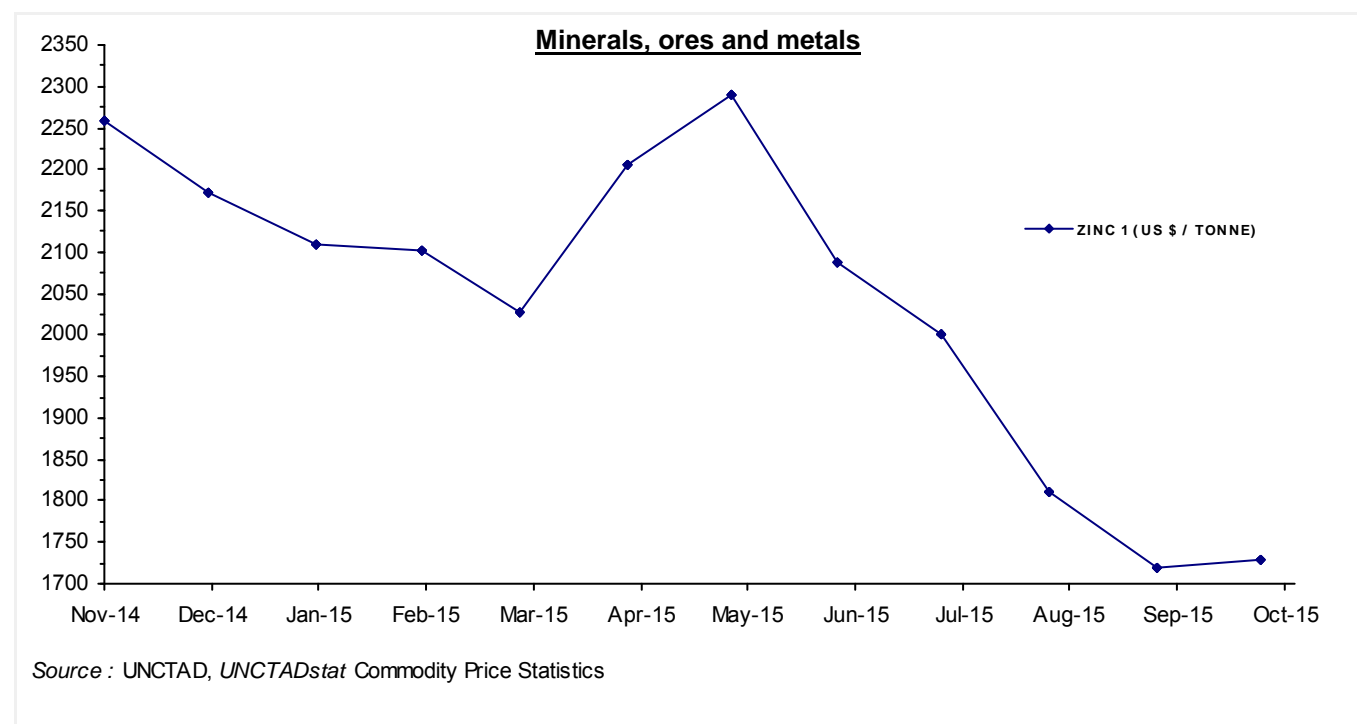
3 - MINERALS, ORES AND METALS

Moving averages		Nov 14	Dec 14	Jan 15	Feb 15	Mar 15	Apr 15	May 15	Jun 15	Jul 15	Aug 15	Sep 15	Oct 15
Nov 13 to Oct 14	Nov 14 to Oct 15												
PHOSPHATE ROCK		KHOURIBGA, 70% BPL, CONTRACT, FAS CASABLANCA										US DOLLARS / TONNE	
108.6	116.2	115.00	115.00	115.00	115.00	115.00	115.00	115.00	115.00	115.00	115.00	121.00	123.00
MANGANESE ORE INDEX		44% MN, CIF TIANJIN										US DOLLARS / TONNE	
465	340	435	433	417	376	352	309	302	300	302	304	293	261
MANGANESE FLAKE		99.7% ELECTROLYTIC, FREE MARKET, IN WAREHOUSE										US DOLLARS / TONNE	
2257	1910	2276	2137	2113	2068	2045	1989	1788	1815	1780	1667	1627	1616
IRON ORE 1		62% Fe, CHINA IMPORT, SPOT (CFR TIANJIN PORT)										US DOLLARS / DRY TONNE	
107.7	60.35	73.59	69.26	67.84	62.81	57.10	51.80	60.82	62.90	52.15	55.73	57.02	53.16
IRON ORE 2		62% Fe, OFFSHORE EXPORT PRICE AUSTRALIA TO CHINA, CIF										US DOLLARS / DRY TONNE	
108.3	60.41	74.00	68.00	68.00	63.00	58.00	52.05	60.21	62.64	52.39	56.19	56.82	53.66
IRON ORE 3		65% Fe, OFFSHORE EXPORT PRICE BRAZIL TO CHINA, CIF										US DOLLARS / DRY TONNE	
117.7	67.3	83.00	76.00	77.00	70.00	64.00	57.30	66.67	69.93	58.83	63.76	62.89	58.20
ALUMINIUM		LONDON METAL EXCHANGE, HIGH GRADE, CASH										US DOLLARS / TONNE	
1826	1747	2053.6	1912.9	1808.1	1820.4	1772.3	1816.8	1804.8	1683.2	1637.8	1539.5	1588.5	1523.7
COPPER 1		LONDON METAL EXCHANGE, GRADE A, CASH										STERLING POUNDS / TONNE	
4201	3775	4247.6	4105.7	3838.2	3719.9	3957.8	4032.2	4073.9	3751.4	3507.3	3261.8	3394.4	3406.3
COPPER 1 \$		AS ABOVE										US DOLLARS / TONNE	
6956	5809	6701.9	6419.7	5822.2	5700.7	5930.0	6032.6	6295.8	5840.6	5457.4	5079.9	5202.9	5224.9
COPPER 2		US PRODUCER/REFINERY, WIRE BARS, FOB										US CENTS / LB.	
323	269.7	306.8	294.8	270.8	265.5	276.4	280.8	294.7	272.5	253.3r	236.2e	241.7e	242.4e
NICKEL 1		LONDON METAL EXCHANGE, CASH										US DOLLARS / TONNE	
16533	12973	15702.4	15914.3	14766.9	14531.1	13742.2	12779.8	13505.0	12776.6	11380.5	10338.8	9895.5	10341.4
NICKEL 2		NEW YORK DEALER, 4X4 CATHODES, ESTIMATED MARKET PRICE										US CENTS / LB.	
757.1	593.4	718.3e	728.0e	675.5e	664.7e	628.6e	584.6e	617.8e	584.5e	520.6e	472.9e	452.7e	473.1e
LEAD 1		LONDON METAL EXCHANGE, CASH SETTLEMENT										STERLING POUNDS / TONNE	
1279	1196	1282.8	1237.5	1207.3	1177.6	1192.1	1337.2	1296.0	1181.1	1133.4	1085.1	1096.4	1124.7
LEAD 1 \$		AS ABOVE										US DOLLARS / TONNE	
2118	1840	2024.0	1935.0	1831.4	1804.7	1786.2	2000.6	2002.9	1838.8	1763.6	1689.9	1680.6	1725.1
LEAD 2		NORTH AMERICA, PRODUCER PRICE										US CENTS / LB.	
116.7	102.4	112.6e	107.8e	101.8e	100.4e	99.4e	111.3e	111.5e	102.2e	98.1e	94.2e	93.6e	96.0e
ZINC 1		LONDON METAL EXCHANGE, SPECIAL HIGH GRADE, CASH SETTLEMENT										US DOLLARS / TONNE	
2113	2043	2259.1	2171.4	2110.3	2102.7	2028.6	2206.5	2289.1	2087.1	2001.7	1809.6	1718.6	1727.7
ZINC 2		NORTH AMERICA, SPECIAL HIGH GRADE										US CENTS / LB.	
104.8	101	111.2	107.3	104.4	103.9	100.4	108.4	111.9	102.4r	98.8r	89.9r	86.8e	86.6e
TIN 1		LONDON METAL EXCHANGE, CASH										US DOLLARS / TONNE	
22399	16938	19962	19820	19453	18284	17454	15979	15819	15010	14954	15219	15469	15839

MONTHLY AVERAGE PRICES

3 - MINERALS, ORES AND METALS

Moving averages		Nov 14	Dec 14	Jan 15	Feb 15	Mar 15	Apr 15	May 15	Jun 15	Jul 15	Aug 15	Sep 15	Oct 15
Nov 13 to Oct 14	Nov 14 to Oct 15												
TIN 2		KUALA LUMPUR TIN MARKET, EX-SMELTER										MALAYSIAN DOLLARS / KG.	
72.35	63.16	66.69	68.71	69.64	65.75	64.40	58.34	57.13	56.70	56.55	61.78	65.16	67.02
TIN 2 \$		AS ABOVE										US DOLLARS / TONNE	
22315	16909	19919.4	19747.1	19444.4	18276.1	17494.3	16053.1	15873.9	15161.2	14873.4	15193.9	15116.2	15756.7
TUNGSTEN APT		EUROPEAN FREE MARKET										US DOLLARS / MTU	
367.8	250.4	326.88	306.83	291.94	281.00	271.81	254.17	243.06	227.50	222.75	206.44	188.61	183.89
FERRO-TUNGSTEN		BASIS 75% W, ROTTERDAM, DUTY UNPAID, IN WAREHOUSE										US DOLLARS / KG	
43.68	30.89	36.48	34.83	34.25	32.93	33.65	34.31	32.69	29.54	27.72	26.69	24.78	22.75
GOLD		LONDON, 99.5% FINE, AFTERNOON FIXING										US DOLLARS / TROY OUNCE	
1276	1179	1176.30	1202.29	1251.85	1227.19	1178.63	1197.91	1199.05	1181.51	1130.04	1117.48	1124.53	1159.25
SILVER		HANDY & HARMAN, 99.9% GRADE REFINED, NEW YORK										US CENTS / TROY OUNCE	
1975	1603	1596.61	1629.48	1723.55	1678.71	1624.00	1634.10	1683.28	1607.46	1505.32	1494.12	1475.02r	1581.25
CRUDE PETROLEUM 1		UK BRENT, DUBAI & WTI AVERAGE, EQUALLY WEIGHTED, SPOT, FOB										US DOLLARS / BARREL	
102.1	55.61	76.96	60.55	47.45	54.93	52.83	57.42	62.50	61.30	54.43	45.72	46.29	46.96
CRUDE PETROLEUM 2		UK BRENT, LIGHT BLEND 38° API, SPOT PRICE, FOB UK PORTS										US DOLLARS / BARREL	
105.5	57.27	78.44	62.16	48.42	57.93	55.79	59.39	64.56	62.35	55.87	46.99	47.23	48.12
CRUDE PETROLEUM 3		DUBAI, MEDIUM, FATEH 32° API, SPOT PRICE, FOB DUBAI										US DOLLARS / BARREL	
103.1	56.24	76.73	60.39	46.34	56.15	54.91	58.67	63.67	61.76	56.27	47.30	46.14	46.55



SOURCES AND NOTES

Sources:

Bloomberg Terminal Services
Cotton Outlook, Liverpool, UK
Food and Agricultural Organization (FAO), Italy
International Cocoa Organization (ICCO), London, UK
International Coffee Organization (ICO), London, UK
International Grains Council (IGC), London, UK
International Monetary Fund (IMF), Washington D.C., USA
International Rubber Study Group (IRSG), Singapore
International Sugar Organization, London, UK
International Tropical Timber Organization (ITTO), Yokohama, Japan
Metal Bulletin, London, UK
Oil World, Hamburg, Germany
PLATTS, New York, USA
Singapore Commodity Exchange Ltd (SICOM), Singapore
The Public Ledger, London, UK
Thomson Reuters, *Datastream*
United States Department of Agriculture (USDA), Foreign Agriculture Service (FAS)
United States Geological Survey, Commodity Statistics and Information
World Bank, Washington D.C., USA

Explanation of symbols:

- " e " estimated figure
- " r " revised figure
- " .. " not available including no quotation
- " // " break in the series

The current and previous editions of the *Commodity Price Bulletin* are available in the Publications section of the Statistics portal of UNCTAD at <http://www.unctad.org>.

The long time series of annual and monthly commodity prices and prices indices are available in UNCTADstat at <http://unctadstat.unctad.org/WDS> as well as in the *Handbook of Statistics* DVD.

If you have any questions or comments concerning commodity price data, please do not hesitate to contact us:
E-mail: statistics@unctad.org