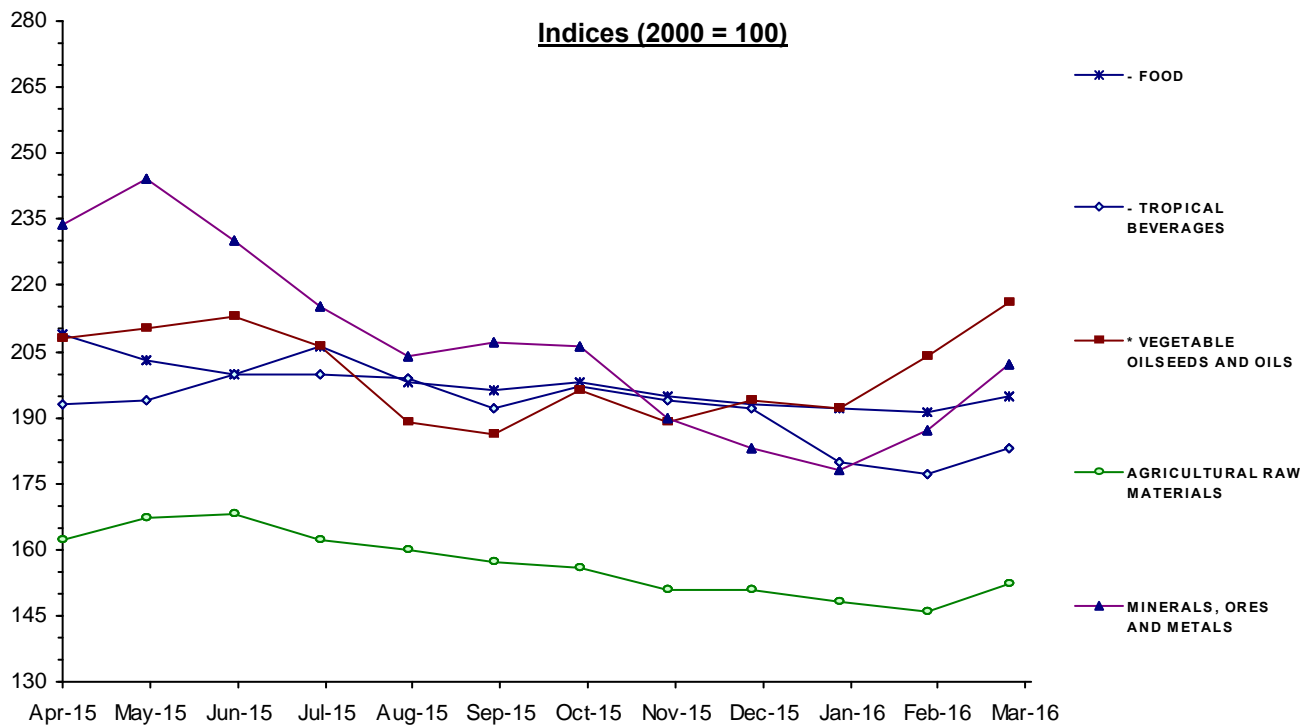


## MONTHLY INDICES OF FREE MARKET PRICES IN US DOLLARS

2000 = 100

Moving averages		Apr 15	May 15	Jun 15	Jul 15	Aug 15	Sep 15	Oct 15	Nov 15	Dec 15	Jan 16	Feb 16	Mar 16
Apr 14 to Mar 15	Apr 15 to Mar 16												
<b>ALL FOOD</b>													
<b>232</b>	<b>198</b>	208	203	201	205	197	195	198	194	193	191	191	196
<b>* TROPICAL BEVERAGES AND FOOD</b>													
<b>232</b>	<b>197</b>	207	202	200	205	198	196	198	195	193	191	190	194
<b>- TROPICAL BEVERAGES</b>													
<b>215</b>	<b>192</b>	193	194	200	200	199	192	197	194	192	180	177	183
<b>- FOOD</b>													
<b>233</b>	<b>198</b>	209	203	200	206	198	196	198	195	193	192	191	195
<b>* VEGETABLE OILSEEDS AND OILS</b>													
<b>237</b>	<b>200</b>	208	210	213	206	189	186	196	189	194	192	204	216
<b>AGRICULTURAL RAW MATERIALS</b>													
<b>177</b>	<b>157</b>	162	167	168	162	160	157	156	151	151	148	146	152
<b>MINERALS, ORES AND METALS</b>													
<b>266</b>	<b>207</b>	234	244	230	215	204	207	206	190	183	178	187	202
<b>PRICE INDEX - ALL GROUPS IN CURRENT DOLLARS</b>													
<b>234</b>	<b>194</b>	208	209	204	202	194	193	194	187	185	182	184	191
<b>PRICE INDEX - ALL GROUPS IN SDR'S</b>													
<b>208</b>	<b>184</b>	199	197	192	191	183	181	183	179	176	174	175	181



Source: UNCTAD, UNCTADstat Commodity Price Statistics



**MONTHLY AVERAGE PRICES**

**1 - FOOD, TROPICAL BEVERAGES AND VEGETABLE OILSEEDS AND OILS**

Moving averages		Apr 15	May 15	Jun 15	Jul 15	Aug 15	Sep 15	Oct 15	Nov 15	Dec 15	Jan 16	Feb 16	Mar 16
Apr 14 to Mar 15	Apr 15 to Mar 16												
<b>WHEAT 1</b>		ARGENTINA, TRIGO PAN UP RIVER, FOB										US DOLLARS / TONNE	
<b>278</b>	<b>213</b>	227	227	226	230	226	223	223	206	191	194	194	192
<b>WHEAT 2</b>		US, NO. 2, HARD RED WINTER (ORDINARY), FOB GULF										US DOLLARS / TONNE	
<b>288</b>	<b>221</b>	244	233	238	236	216	219	218	211	214	213	204	207
<b>MAIZE 1</b>		ARGENTINA, ROSARIO (UP RIVER), FOB										US DOLLARS / TONNE	
<b>189.5</b>	<b>165.8</b>	168.0	169.0	170.0	176.0	159.0	161.0	163.0	167.0	165.0	162.0	167.0	162.0
<b>MAIZE 2</b>		US, NO. 3 YELLOW, FOB GULF										US DOLLARS / TONNE	
<b>195.3</b>	<b>172</b>	177.0	171.0	173.0	185.0	167.0	175.0	179.0	170.0	170.0	169.0	166.0	162.0
<b>RICE</b>		THAILAND, WHITE 5% BROKEN, FOB BANGKOK										US DOLLARS / TONNE	
<b>418</b>	<b>370</b>	392	382	371	388	376	359	360	358	354	359	373	370
<b>SUGAR</b>		AVERAGE OF I.S.A. DAILY PRICES, FOB & STOWED CARIBBEAN PORTS										US CENTS / LB.	
<b>16.41</b>	<b>13.41</b>	13.08	13.34	12.46	12.77	11.50	11.86	13.91	14.55	14.64	14.05	13.28	15.44
<b>BEEF</b>		AUSTRALIA/NEW ZEALAND, US IMPORT PRICE, FOB ENTRY PORT										US CENTS / LB.	
<b>230.2</b>	<b>188.6</b>	214.4	199.2	195.1	204.4	212.0	202.4	184.6	177.1	167.1	159.1	171.3	176.2
<b>BANANAS</b>		CENTRAL AMERICA/ECUADOR, US IMPORTER'S PRICE, FOB US PORTS										US CENTS / LB.	
<b>42.58</b>	<b>44.19</b>	48.04	42.95	42.15	42.56	43.39	43.17	42.35	42.29	42.29	47.06	47.73	46.31
<b>PEPPER</b>		INDONESIA, MUNTOK, WHITE FAQ EXW ROTTERDAM										US DOLLARS / TONNE	
<b>13288</b>	<b>14171</b>	13600	14753	14682	15500	15255	14800	14336	14200	14200	12760	13000	12962
<b>SOYBEAN MEAL</b>		44/45% PROTEIN, FOB EX-MILL HAMBURG										US DOLLARS / TONNE	
<b>471</b>	<b>347</b>	380	371	372	389	373	362	351	328	317	316	303	301
<b>FISH MEAL</b>		ANY ORIGIN, 64/65% PROTEIN, FREE CARRIER PRICE, BREMEN										US DOLLARS / TONNE	
<b>1751</b>	<b>1496</b>	1539	1525	1506	1466	1469	1480	1531	1537	1503	1476	1472	1448
<b>COFFEE 1</b>		COLOMBIAN MILD ARABICAS, EX-DOCK USA (I.C.A.)										US CENTS / LB.	
<b>196.8</b>	<b>142.5</b>	155.30	148.45	150.58	142.24	144.96	133.03	140.28	137.49	140.23	134.93	137.71	145.18
<b>COFFEE 2</b>		BRAZILIAN AND OTHER NATURAL ARABICAS, EX-DOCK USA (I.C.A.)										US CENTS / LB.	
<b>161.1</b>	<b>115.5</b>	131.63	124.60	120.85	111.92	118.39	109.53	116.83	110.70	110.38	106.46	108.21	116.14
<b>COFFEE 3</b>		OTHER MILD ARABICAS, EX-DOCK USA (I.C.A.)										US CENTS / LB.	
<b>203.1</b>	<b>154</b>	164.95	158.45	159.77	153.29	158.78	147.65	153.88	148.94	149.82	146.32	148.94	156.94
<b>COFFEE 4</b>		OTHER MILD ARABICAS, EX-DOCK EU (I.C.A.)										US CENTS / LB.	
<b>200.1</b>	<b>152.9</b>	163.41	158.49	159.75	155.12	155.79	145.16	152.81	147.10	147.88	144.20	146.85	157.68
<b>COFFEE 5</b>		ROBUSTAS, EX-DOCK USA (I.C.A.)										US CENTS / LB.	
<b>105.5</b>	<b>89.38</b>	98.73	94.35	96.89	92.71	91.94	88.00	88.67	88.63	86.35	81.96	81.16	83.19
<b>COFFEE 6</b>		ROBUSTAS, EX-DOCK EU (I.C.A.)										US CENTS / LB.	
<b>99.45</b>	<b>81.37</b>	90.79	86.17	88.98	86.03	84.60	80.31	81.57	80.39	77.82	73.24	72.57	73.97
<b>COFFEE 7</b>		COMPOSITE INDICATOR PRICE 1976 VERSION										US CENTS / LB.	
<b>154.3</b>	<b>121.7</b>	131.84	126.40	128.33	123.00	125.36	117.83	121.28	118.78	118.08	114.14	115.05	120.06

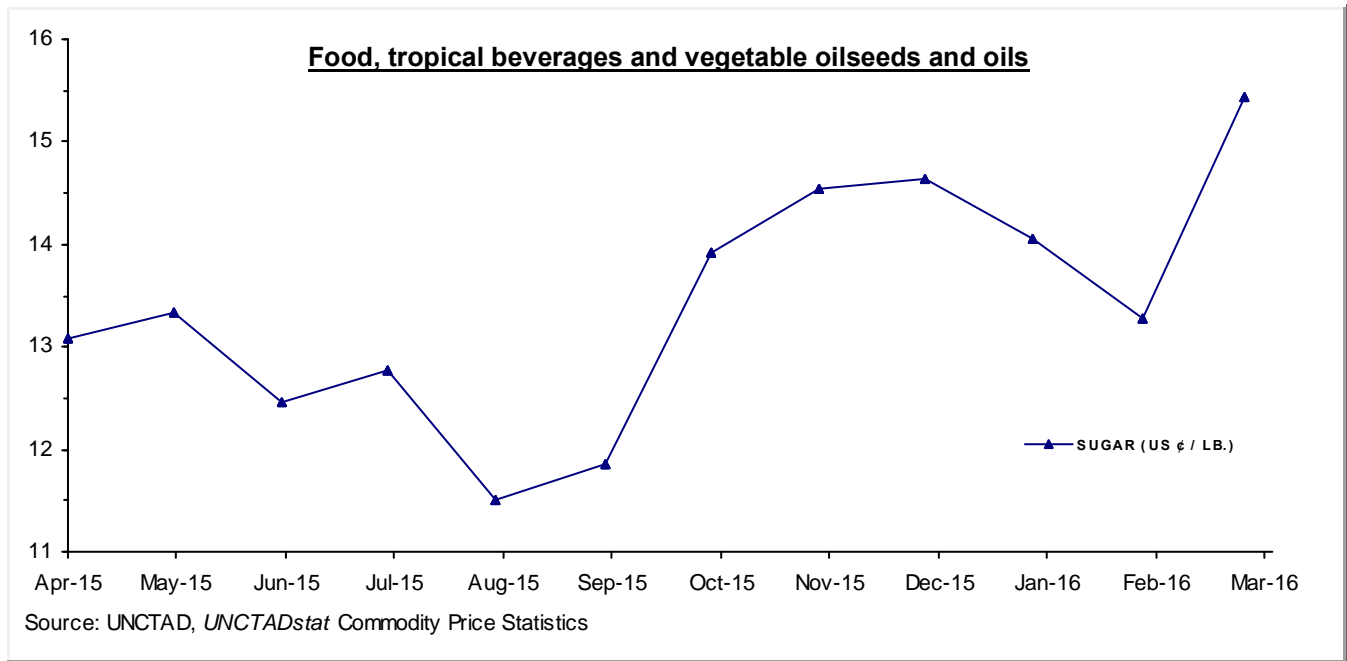
**MONTHLY AVERAGE PRICES**

**1 - FOOD, TROPICAL BEVERAGES AND VEGETABLE OILSEEDS AND OILS**

Moving averages		Apr 15 to Mar 15	May 15	Jun 15	Jul 15	Aug 15	Sep 15	Oct 15	Nov 15	Dec 15	Jan 16	Feb 16	Mar 16
Apr 14 to Mar 15	Apr 15 to Mar 16												
<b>COFFEE 8</b>		ICO COMPOSITE INDICATOR PRICE										US CENTS / LB.	
<b>155.5</b>	<b>118.3</b>	129.02	123.49	124.97	119.77	121.21	113.10	118.43	115.03	114.63	110.89	111.75	117.83
<b>COCOA</b>		AVERAGE OF DAILY PRICES, NEW YORK/LONDON, 3 MONTHS FUTURES										US CENTS / LB.	
<b>112.7</b>	<b>142.9</b>	130.10	140.43	146.92	150.87	143.02	148.71	145.07	152.45	151.76	133.92	132.29	139.41
<b>COCOA SDR</b>		AS ABOVE										SDRs / TONNE	
<b>1634</b>	<b>2258</b>	2073.02	2204.41	2305.68	2382.30	2249.75	2331.62	2274.31	2432.82	2414.60	2136.37	2092.75	2203.01
<b>TEA</b>		KENYA, BEST PEKOE FANNINGS 1, MOMBASA AUCTION PRICE										US CENTS / KG.	
<b>248.7</b>	<b>340.2</b>	290.7	313.8	355.9	403.0	387.3	371.2	391.8	353.8	343.5	319.8	287.3	263.7
<b>SOYBEANS</b>		US, NO. 2 YELLOW, CIF ROTTERDAM										US DOLLARS / TONNE	
<b>457</b>	<b>380</b>	395	389	397	405	381	368	376	368	372	367	369	375
<b>SOYBEAN OIL</b>		DUTCH, FOB EX-MILL										US DOLLARS / TONNE	
<b>858</b>	<b>750</b>	749	781	793	751	730	727	742	726	761	726	758	761
<b>SUNFLOWER OIL</b>		EU, FOB, N.W. EUROPEAN PORTS										US DOLLARS / TONNE	
<b>870</b>	<b>856</b>	838	904	918	832	812	815	883	862	852	846	869	842
<b>GROUNDNUT OIL</b>		ANY ORIGIN, CIF ROTTERDAM										US DOLLARS / TONNE	
<b>1328</b>	<b>1313</b>	1348	1345	1345	1345	1331	1321	1314	1298	1283	1274	1271	1286
<b>COPRA</b>		PHILIPPINES/INDONESIA, CIF N.W. EUROPEAN PORTS										US DOLLARS / TONNE	
<b>820</b>	<b>759</b>	714	748	748	735	689	699	736	716	759	763	813	990
<b>COCONUT OIL</b>		PHILIPPINES/INDONESIA, CIF ROTTERDAM										US DOLLARS / TONNE	
<b>1232</b>	<b>1141</b>	1080	1133	1131	1100	1037	1063	1108	1073	1147	1155	1216	1448
<b>PALM KERNEL OIL</b>		MALAYSIA/INDONESIA, CIF ROTTERDAM										US DOLLARS / TONNE	
<b>1064</b>	<b>905</b>	985	966	919	869	739	798	860	785	847	894	988	1213
<b>PALM OIL</b>		INDONESIA/MALAYSIA, 5% FFA, CIF N.W. EUROPEAN PORTS										US DOLLARS / TONNE	
<b>764</b>	<b>610</b>	662	659	671	635	549	538	583	558	568	566	639	686
<b>COTTONSEED OIL</b>		UNITED STATES, CRUDE, FOB MISSISSIPPI VALLEY										US DOLLARS / TONNE	
<b>1294</b>	<b>1065</b>	1044	1071	1120	1070	1005	1068	1071	1076	1080	1016	1080	1073

**MONTHLY AVERAGE PRICES**

**1 - FOOD, TROPICAL BEVERAGES AND VEGETABLE OILSEEDS AND OILS**



**MONTHLY AVERAGE PRICES**

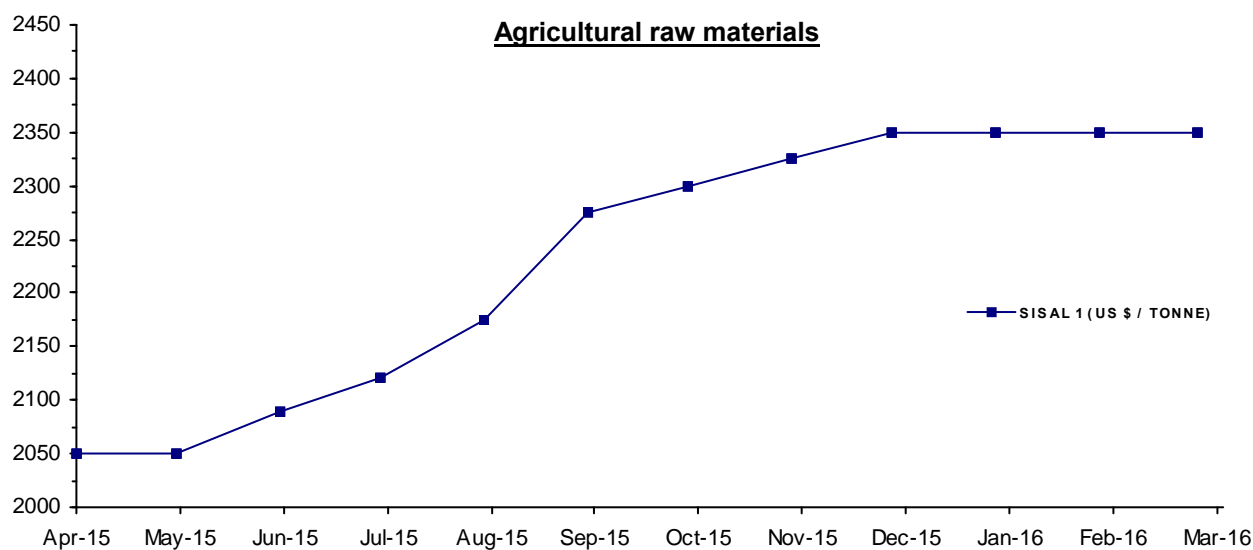
**2 - AGRICULTURAL RAW MATERIALS**

Moving averages		Apr 15	May 15	Jun 15	Jul 15	Aug 15	Sep 15	Oct 15	Nov 15	Dec 15	Jan 16	Feb 16	Mar 16
Apr 14 to Mar 15	Apr 15 to Mar 16												
<b>LINSEED OIL</b>		ANY ORIGIN, EX-TANK, ROTTERDAM										US DOLLARS / TONNE	
<b>1214</b>	<b>982</b>	1123	1116	1113	1161	1111	1036	917	876	860	878	808	789
<b>TOBACCO</b>		UNMANUFACTURED, US IMPORT UNIT VALUE										US DOLLARS / TONNE	
<b>4969</b>	<b>4841</b>	4987	5018	4947	4878	4926	4887	4858	4798	4774	4714	4651r	4651e
<b>COTTON 3</b>		US, MEMPHIS EASTERN, MIDD. 1-3/32", CFR FAR EASTERN										US CENTS / LB.	
<b>80.35</b>	<b>74.67</b>	74.85	74.81	75.38	75.85	77.38	74.94	75.95	75.94	76.38	74.13	71.19	69.25
<b>COTTON 4</b>		US, MEMPHIS/ORLEANS/TEXAS, MIDD.1", CFR FAR EASTERN										US CENTS / LB.	
<b>79.82</b>	<b>73.32</b>	74.20	74.50	74.63	75.10	76.75	73.94	74.30	74.31	74.81	71.63	68.88	66.80
<b>COTTON 6</b>		INDEX A (M 1-3/32"), COTTON OUTLOOK, LIVERPOOL										US CENTS / LB.	
<b>76.21</b>	<b>69.93</b>	71.70	72.86	72.35	72.35	71.82	68.74	69.03	69.22	70.39	68.75	66.50	65.46
<b>WOOL 1</b>		AUSTRALIAN FINE WOOL 19 MICRON										US DOLLARS / TONNE	
<b>10328</b>	<b>10247</b>	9867.6	11145.8	11378.0	10096.5	10226.8	9667.5	9560.6	10030.6	10283.2	10142.3	10170.6	10390.1
<b>WOOL 2</b>		AUSTRALIAN COARSE WOOL 23 MICRON										US DOLLARS / TONNE	
<b>9813</b>	<b>9409</b>	8831.4	9763.4	10285.7	9443.5	9792.8	9025.1	8848.8	9020.5	9099.1	9309.2	9572.7	9920.2
<b>JUTE</b>		BANGLADESH, BWD, FOB MONGLA										US DOLLARS / TONNE	
<b>668</b>	<b>760</b>	720	710	680	660	680	720	740	800	840	850	860	860
<b>SISAL 1</b>		TANZANIA/KENYA, NO.2 & 3 LONG, CIF MAIN EUROPEAN PORTS										US DOLLARS / TONNE	
<b>1803</b>	<b>2232</b>	2050	2050	2090	2120	2175	2275	2300	2325	2350	2350	2350	2350
<b>SISAL 2</b>		TANZANIA/KENYA, NO.3 & UG, CIF MAIN EUROPEAN PORTS										US DOLLARS / TONNE	
<b>1703</b>	<b>2095</b>	1925	1925	1965	1995	2050	2150	2175	2175	2195	2195	2195	2195
<b>CATTLE HIDES</b>		CHICAGO, PACKER'S HEAVY NATIVE STEERS, FOB										US CENTS / LB.	
<b>110</b>	<b>79</b>	100	96	94	83	71	75	75	70	70	70	70	70
<b>NON-CONIFEROUS WOODS</b>		UK, IMPORT PRICE INDEX (DOLLAR EQUIVALENT)										INDEX 2010=100	
<b>101.5</b>	<b>89.4</b>	93.9	92.2	92.2	91.2	89.6	89.7	88.6	88.2	87.9	87.6	86.2	86.0
<b>TROPICAL LOGS 1</b>		SAPELE, LM, FOB UK IMPORT PRICE										US DOLLARS / CUBIC METER	
<b>444</b>	<b>386.4</b>	377.8	390.8	392.5	385.1	389.8	393.0	393.3	375.9	380.6	380.2	388.4	388.9
<b>TROPICAL LOGS 2</b>		OKOUME (60% CI, 40% CE, 20% CS), FOB										US DOLLARS / CUBIC METER	
<b>423</b>	<b>243.3</b>	258.7	267.6	269.2	261.1	261.8	246.9	241.5	220.1	217.5	217.2	221.8	235.9
<b>TROPICAL SAWNWOOD</b>		MALAYSIA, DARK RED MERANTI, SEL/BTR, CFR PLUS COMMISSION UK										£ / CUBIC METER	
<b>545</b>	<b>545.2</b>	544.2	545.1	544.5	545.0	545.8	545.9	544.9	545.5	545.5	546.3	545.6	544.1
<b>PLYWOOD</b>		AFRICA/SOUTHEAST ASIA, LAUAN, WHOLESALE PRICE, SPOT TOKYO										US CENTS / SHEET	
<b>499.0</b>	<b>455.1</b>	456.80	452.10	441.29	442.54	443.30	454.48	455.00	445.50	448.70	461.80	475.70	483.50

## MONTHLY AVERAGE PRICES

### 2 - AGRICULTURAL RAW MATERIALS

Moving averages		Apr 15	May 15	Jun 15	Jul 15	Aug 15	Sep 15	Oct 15	Nov 15	Dec 15	Jan 16	Feb 16	Mar 16
Apr 14 to Mar 15	Apr 15 to Mar 16												
<b>PLYWOOD CM</b>		AS ABOVE										US DOLLARS / CUBIC METER	
<b>753.3</b>	<b>686.9</b>	689.53	682.44	666.12	668.01	669.15	686.02	686.81	672.47	677.30	697.08	718.06	729.83
<b>RUBBER 1</b>		RSS 3, MONTHLY AVERAGE OF WEIGHTED DAILY FUTURE PRICES										US CENTS / KG	
<b>182.7</b>	<b>145.8</b>	170.0	184.2	182.9	164.0	142.1	131.2	130.1	122.2	124.8	122.0	125.8	150.5
<b>RUBBER 2</b>		TSR20 NEW YORK CIF										US DOLLARS / TONNE	
<b>1825</b>	<b>1523</b>	1643.90	1776.80	1817.00	1700.60	1588.00	1488.00	1473.40	1407.80	1375.40	1291.80	1258.00	1455.60



Source: UNCTAD, *UNCTADstat* Commodity Price Statistics

**MONTHLY AVERAGE PRICES**

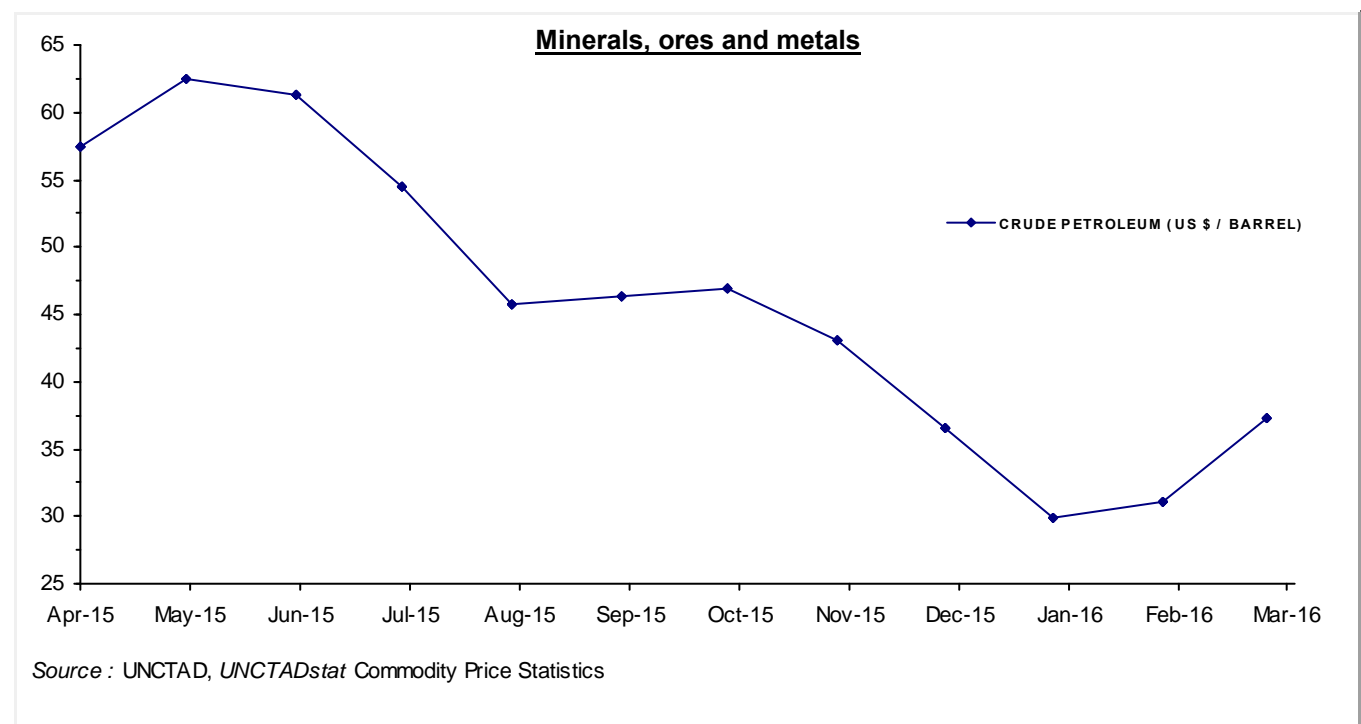
**3 - MINERALS, ORES AND METALS**

Moving averages		Apr 15	May 15	Jun 15	Jul 15	Aug 15	Sep 15	Oct 15	Nov 15	Dec 15	Jan 16	Feb 16	Mar 16
Apr 14 to Mar 15	Apr 15 to Mar 16												
<b>PHOSPHATE ROCK</b>		K HOURIBGA, 70% BPL, CONTRACT, FAS CASABLANCA										US DOLLARS / TONNE	
<b>112.9</b>	<b>117.7</b>	115.00	115.00	115.00	115.00	115.00	121.00	123.00	123.00	122.50	118.00	115.00	115.00
<b>MANGANESE ORE INDEX</b>		44% MN, CIF TIANJIN										US DOLLARS / TONNE	
<b>421</b>	<b>268</b>	309	302	300	302	304	293	261	224	196	181	201	347
<b>MANGANESE FLAKE</b>		99.7% ELECTROLYTIC, FREE MARKET, IN WAREHOUSE										US DOLLARS / TONNE	
<b>2194</b>	<b>1740</b>	1989	1788	1815	1780	1667	1627	1616	1488	1595	1758	2013	1739
<b>IRON ORE 1</b>		62% Fe, CHINA IMPORT, SPOT (CFR TIANJIN PORT)										US DOLLARS / DRY TONNE	
<b>82.49</b>	<b>52.12</b>	51.80	60.82	62.90	52.15	55.73	57.02	53.16	46.58	40.39	41.89	46.89	56.14
<b>IRON ORE 2</b>		62% Fe, OFFSHORE EXPORT PRICE AUSTRALIA TO CHINA, CIF										US DOLLARS / DRY TONNE	
<b>82.75</b>	<b>52.15</b>	52.05	60.21	62.64	52.39	56.19	56.82	53.66	46.86	40.46	41.83	46.42	56.29
<b>IRON ORE 3</b>		65% Fe, OFFSHORE EXPORT PRICE BRAZIL TO CHINA, CIF										US DOLLARS / DRY TONNE	
<b>90.42</b>	<b>56.89</b>	57.30	66.67	69.93	58.83	63.76	62.89	58.20	50.45	43.33	43.98	48.48	58.86
<b>ALUMINIUM</b>		LONDON METAL EXCHANGE, HIGH GRADE, CASH										US DOLLARS / TONNE	
<b>1889</b>	<b>1592</b>	1816.8	1804.8	1683.2	1637.8	1539.5	1588.5	1523.7	1465.4	1493.9	1479.1	1535.2	1530.2
<b>COPPER 1</b>		LONDON METAL EXCHANGE, GRADE A, CASH										STERLING POUNDS / TONNE	
<b>4061</b>	<b>3456</b>	4032.2	4073.9	3751.4	3507.3	3261.8	3394.4	3406.3	3164.0	3089.0	3099.8	3214.1	3477.2
<b>COPPER 1 \$</b>		AS ABOVE										US DOLLARS / TONNE	
<b>6555</b>	<b>5214</b>	6032.6	6295.8	5840.6	5457.4	5079.9	5202.9	5224.9	4806.4	4625.8	4457.5	4595.2	4953.3
<b>COPPER 2</b>		US PRODUCER/REFINERY, WIRE BARS, FOB										US CENTS / LB.	
<b>303.1</b>	<b>242</b>	280.8	294.7	272.5	253.3	238.7	242.6	242.1	220.7	213.2r	205.7r	211.8e	228.0e
<b>NICKEL 1</b>		LONDON METAL EXCHANGE, CASH										US DOLLARS / TONNE	
<b>16791</b>	<b>10369</b>	12779.8	13505.0	12776.6	11380.5	10338.8	9895.5	10341.4	9228.6	8688.7	8479.9	8306.4	8701.0
<b>NICKEL 2</b>		NEW YORK DEALER, 4X4 CATHODES, ESTIMATED MARKET PRICE										US CENTS / LB.	
<b>768.1</b>	<b>474.3</b>	584.6e	617.8e	584.5e	520.6e	472.9e	452.7e	473.1e	422.2e	397.5e	387.9e	380.0e	398.0e
<b>LEAD 1</b>		LONDON METAL EXCHANGE, CASH SETTLEMENT										STERLING POUNDS / TONNE	
<b>1252</b>	<b>1176</b>	1337.2	1296.0	1181.1	1133.4	1085.1	1096.4	1124.7	1063.5	1135.3	1144.0	1238.5	1270.9
<b>LEAD 1 \$</b>		AS ABOVE										US DOLLARS / TONNE	
<b>2021</b>	<b>1770</b>	2000.6	2002.9	1838.8	1763.6	1689.9	1680.6	1725.1	1615.6	1700.2	1645.0	1770.7	1810.4
<b>LEAD 2</b>		NORTH AMERICA, PRODUCER PRICE										US CENTS / LB.	
<b>112.5</b>	<b>98.5</b>	111.3e	111.5e	102.2e	98.1e	94.2e	93.6e	96.0e	89.9e	94.7e	91.6e	98.6e	100.6e
<b>ZINC 1</b>		LONDON METAL EXCHANGE, SPECIAL HIGH GRADE, CASH SETTLEMENT										US DOLLARS / TONNE	
<b>2175</b>	<b>1831</b>	2206.5	2289.1	2087.1	2001.7	1809.6	1718.6	1727.7	1582.0	1521.7	1511.9	1710.5	1804.3
<b>ZINC 2</b>		NORTH AMERICA, SPECIAL HIGH GRADE										US CENTS / LB.	
<b>107.5</b>	<b>90.8</b>	108.4	111.9	102.4	98.8	89.9	85.6	85.9	79.1	76.0r	75.6e	85.5e	90.2e
<b>TIN 1</b>		LONDON METAL EXCHANGE, CASH										US DOLLARS / TONNE	
<b>20844</b>	<b>15343</b>	15979	15819	15010	14954	15219	15469	15839	14735	14694	13769	15647	16989

## MONTHLY AVERAGE PRICES

### 3 - MINERALS, ORES AND METALS

Moving averages		Apr 15	May 15	Jun 15	Jul 15	Aug 15	Sep 15	Oct 15	Nov 15	Dec 15	Jan 16	Feb 16	Mar 16
Apr 14 to Mar 15	Apr 15 to Mar 16												
<b>TIN 2</b>		KUALA LUMPUR TIN MARKET, EX-SMELTER										MALAYSIAN DOLLARS / KG.	
<b>69.62</b>	<b>61.24</b>	58.34	57.13	56.70	56.55	61.78	65.16	67.02	63.56	62.61	59.66	64.55	61.85
<b>TIN 2 \$</b>		AS ABOVE										US DOLLARS / TONNE	
<b>20845</b>	<b>15283</b>	16053.1	15873.9	15161.2	14873.4	15193.9	15116.2	15756.7	14731.7	14622.4	13736.7	15444.8	16835.9
<b>TUNGSTEN APT</b>		EUROPEAN FREE MARKET										US DOLLARS / MTU	
<b>334.8</b>	<b>199.3</b>	254.17	243.06	227.50	222.75	206.44	188.61	183.89	172.50	176.50	171.11	169.38	175.50
<b>FERRO-TUNGSTEN</b>		BASIS 75% W, ROTTERDAM, DUTY UNPAID, IN WAREHOUSE										US DOLLARS / KG	
<b>38.72</b>	<b>25.97</b>	34.31	32.69	29.54	27.72	26.69	24.78	22.75	21.71	22.55	23.42	22.39	23.03
<b>GOLD</b>		LONDON, 99.5% FINE, AFTERNOON FIXING										US DOLLARS / TROY OUNCE	
<b>1248</b>	<b>1151</b>	1197.91	1199.05	1181.51	1130.04	1117.48	1124.53	1159.25	1085.70	1068.25	1097.38	1199.91	1246.34
<b>SILVER</b>		HANDY & HARMAN, 99.9% GRADE REFINED, NEW YORK										US CENTS / TROY OUNCE	
<b>1814</b>	<b>1526</b>	1634.10	1683.28	1607.46	1505.32	1494.12	1475.02	1581.25	1445.23	1408.55	1411.18	1516.73	1546.45
<b>CRUDE PETROLEUM 1</b>		UK BRENT, DUBAI & WTI AVERAGE, EQUALLY WEIGHTED, SPOT, FOB										US DOLLARS / BARREL	
<b>83.25</b>	<b>46.05</b>	57.42	62.50	61.30	54.43	45.72	46.29	46.96	43.13	36.56	29.92	31.05	37.34
<b>CRUDE PETROLEUM 2</b>		UK BRENT, LIGHT BLEND 38° API, SPOT PRICE, FOB UK PORTS										US DOLLARS / BARREL	
<b>85.47</b>	<b>47.48</b>	59.39	64.56	62.35	55.87	46.99	47.23	48.12	44.42	37.72	30.80	33.20	39.07
<b>CRUDE PETROLEUM 3</b>		DUBAI, MEDIUM, FATEH 32° API, SPOT PRICE, FOB DUBAI										US DOLLARS / BARREL	
<b>83.67</b>	<b>45.78</b>	58.67	63.67	61.76	56.27	47.30	46.14	46.55	42.32	34.70	27.25	29.61	35.17





## SOURCES AND NOTES

### Sources:

Bloomberg Terminal Services  
*Cotton Outlook*, Liverpool, UK  
Food and Agricultural Organization (FAO), Italy  
International Cocoa Organization (ICCO), London, UK  
International Coffee Organization (ICO), London, UK  
International Grains Council (IGC), London, UK  
International Monetary Fund (IMF), Washington D.C., USA  
International Rubber Study Group (IRSG), Singapore  
International Sugar Organization, London, UK  
International Tropical Timber Organization (ITTO), Yokohama, Japan  
*Metal Bulletin*, London, UK  
*Oil World*, Hamburg, Germany  
PLATTS, New York, USA  
Singapore Commodity Exchange Ltd (SICOM), Singapore  
*The Public Ledger*, London, UK  
Thomson Reuters, *Datastream*  
United States Department of Agriculture (USDA), Foreign Agriculture Service (FAS)  
United States Geological Survey, Commodity Statistics and Information  
World Bank, Washington D.C., USA

### Explanation of symbols:

- " e " estimated figure
- " r " revised figure
- " .. " not available including no quotation
- " // " break in the series

The current and previous editions of the *Commodity Price Bulletin* are available in the Publications section of the Statistics portal of UNCTAD at <http://www.unctad.org>.

The long time series of annual and monthly commodity prices and prices indices are available in UNCTADstat at <http://unctadstat.unctad.org/WDS> as well as in the *Handbook of Statistics* DVD.

If you have any questions or comments concerning commodity price data, please do not hesitate to contact us:  
E-mail: [statistics@unctad.org](mailto:statistics@unctad.org)